



**36G BAY STREET**  
FAIRLIE

[www.corumproperty.co.uk](http://www.corumproperty.co.uk)







**2 | BEDROOMS**

**1 | BATHROOM**

**1 | PUBLIC ROOM**

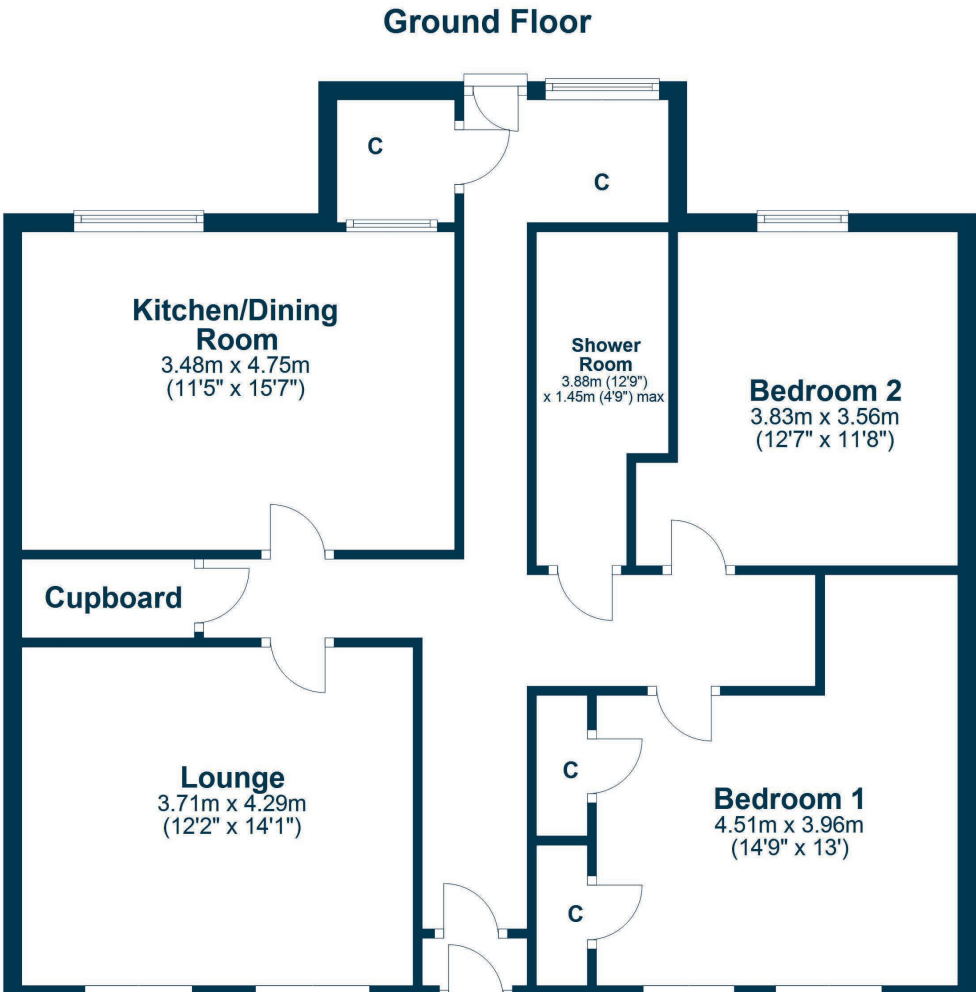
**This fabulous traditional ground floor flat is located in this desirable shorefront street in the picturesque village of Fairlie. The property has its own private main door entry along with access to the private garden & communal residents' gardens at the rear**

36G Bay Street is a main door entry ground floor flat which offers substantial accommodation. The location is the perfect place for shorefront and nearby is the ever popular Village Inn. Fairlie is a lovely village which has the local railway station, nearby Largs Yacht Haven marina and shorefront. The excellent accommodation on offer within the property extends to the entrance vestibule, reception hallway, lounge to the front of the home, stunning open plan kitchen and dining area, two double bedrooms and modern shower room. There is good sized storage in the property. The property has underfloor heating through an electric system and double glazing. There are lovely garden grounds to the rear of the property with a private area & communal area. Early viewing is highly recommended to appreciate the accommodation and location on offer.









Fairlie is a popular small village located on the Clyde Coast, south of Largs. The village has many amenities which include a primary school, Fairlie Primary, local bar / restaurant, shopping facilities and a bowling club. Fairlie is located within close proximity to Kelburn Country Park and Largs Marina and it is within the catchment area for those who have children attending Largs Academy Campus. The village is also well positioned for accessing all major road networks and there is a local train station which provides a frequent mainline service to Largs and Glasgow.

**LA1995** | Sat Nav: 36G Bay Street, Fairlie, KA29 0AL

For the full home report visit [www.corumproperty.co.uk](http://www.corumproperty.co.uk)

\* All measurements and distances are approximate Floorplans are for illustration purposes and may not be to scale.



WE'RE **SOLD** ON  
YOUR FUTURE



Corum Largs  
66 Main Street, Largs, KA30 8AL

**Tel:** 01475 675 001

**Email:** [largs@corumproperty.co.uk](mailto:largs@corumproperty.co.uk)

[www.corumproperty.co.uk](http://www.corumproperty.co.uk)