



15 DUFFIELD DRIVE

LARGS

www.corumproperty.co.uk


c o r u m



2 | BEDROOMS

1 | BATHROOM

1 | PUBLIC ROOM

This immaculate mid terrace villa is located in the desirable South side of Largs whilst being a short distance from the ever-popular esplanade & shorefront. The property also enjoys views out over the Firth of Clyde to the Isle of Cumbrae.

15 Duffield Drive is a lovely home which has been recently upgraded by the present owners and is only a short distance from the shorefront. There are also great views over to the Isle of Cumbrae from the front of the home and views to local countryside from the rear.

The excellent accommodation on offer extends to a bright entrance hallway, lounge with feature bay window, lovely dining kitchen with access to the rear garden grounds through the sunroom at the rear, two double bedrooms and modern bathroom. The property has gas central heating and double glazing. There are mature gardens grounds to both the front and rear of the property. Early viewing is highly recommended to appreciate the accommodation and location on offer.





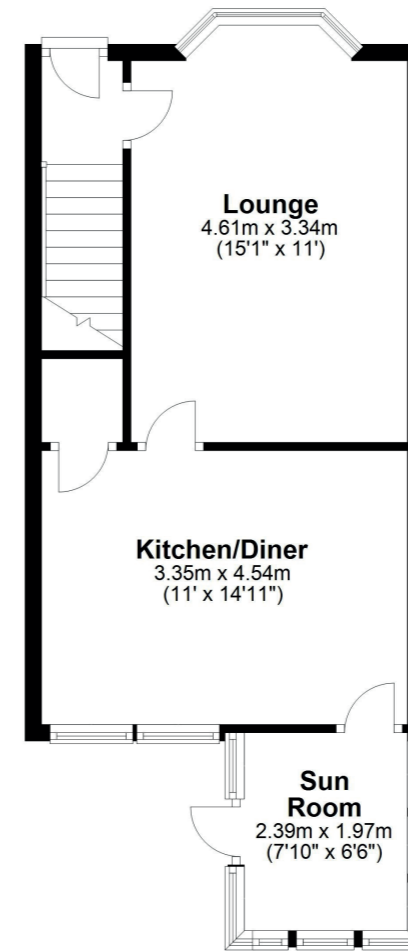




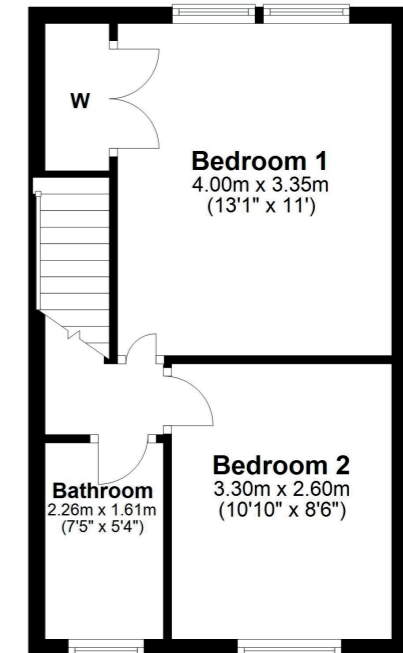




Ground Floor



First Floor



Largs is a popular holiday destination and is becoming increasingly popular for those looking for a seaside home in a town with a good range of amenities and recreational facilities. The Largs Academy Campus (built 2018) incorporates Early Years Learning, Largs Primary and St Mary's Primary as well as the highly regarded Largs Academy. Inverclyde, Scotland's National Sport's centre has also recently been refurbished. The area has excellent travel links including Largs railway station, bus routes and easy access to the major road networks. There are many restaurants and hotels in the area, with the yacht marina and seafront being an attraction for many. Prestwick and Glasgow Airport offer regular flights throughout Britain, Ireland and Europe.

LA1955 | Sat Nav: 15 Duffield Drive, Largs, KA30 8ED

For the full home report visit www.corumproperty.co.uk

* All measurements and distances are approximate Floorplans are for illustration purposes and may not be to scale.



WE'RE **SOLD** ON
YOUR FUTURE



Corum Largs
66 Main Street, Largs, KA30 8AL

Tel: 01475 675 001

Email: largs@corumproperty.co.uk

www.corumproperty.co.uk