



16 ROSEBANK GARDENS

LARGS

www.corumproperty.co.uk





4 | BEDROOMS

3 | BATHROOMS

1 | PUBLIC ROOM

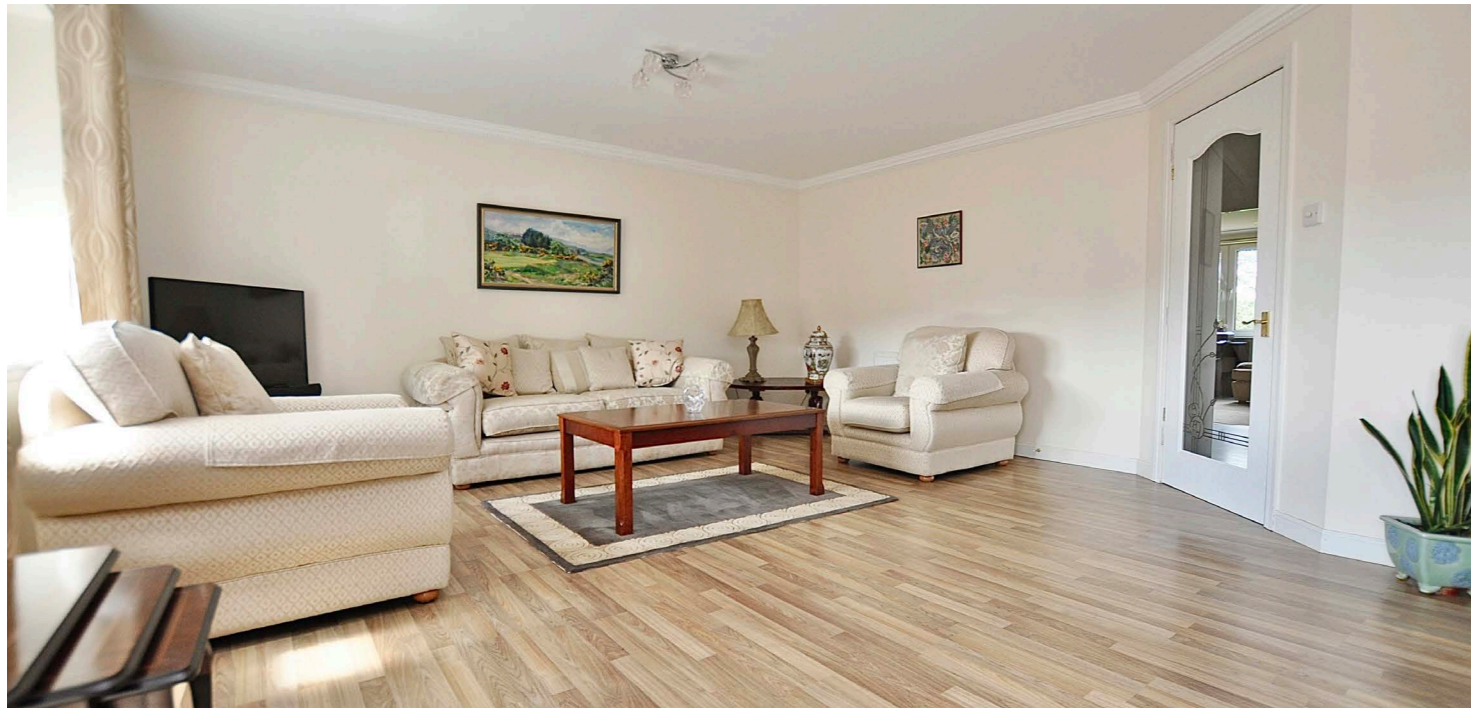
This wonderful, modern duplex apartment has stunning views out over the Firth of Clyde to the Isle of Cumbrae. The well-proportioned accommodation is formed over two levels along with lift access and private parking.

16 Rosebank Gardens is a modern duplex apartment which is formed over two levels with great views out over the Firth of Clyde to the Isle of Cumbrae.

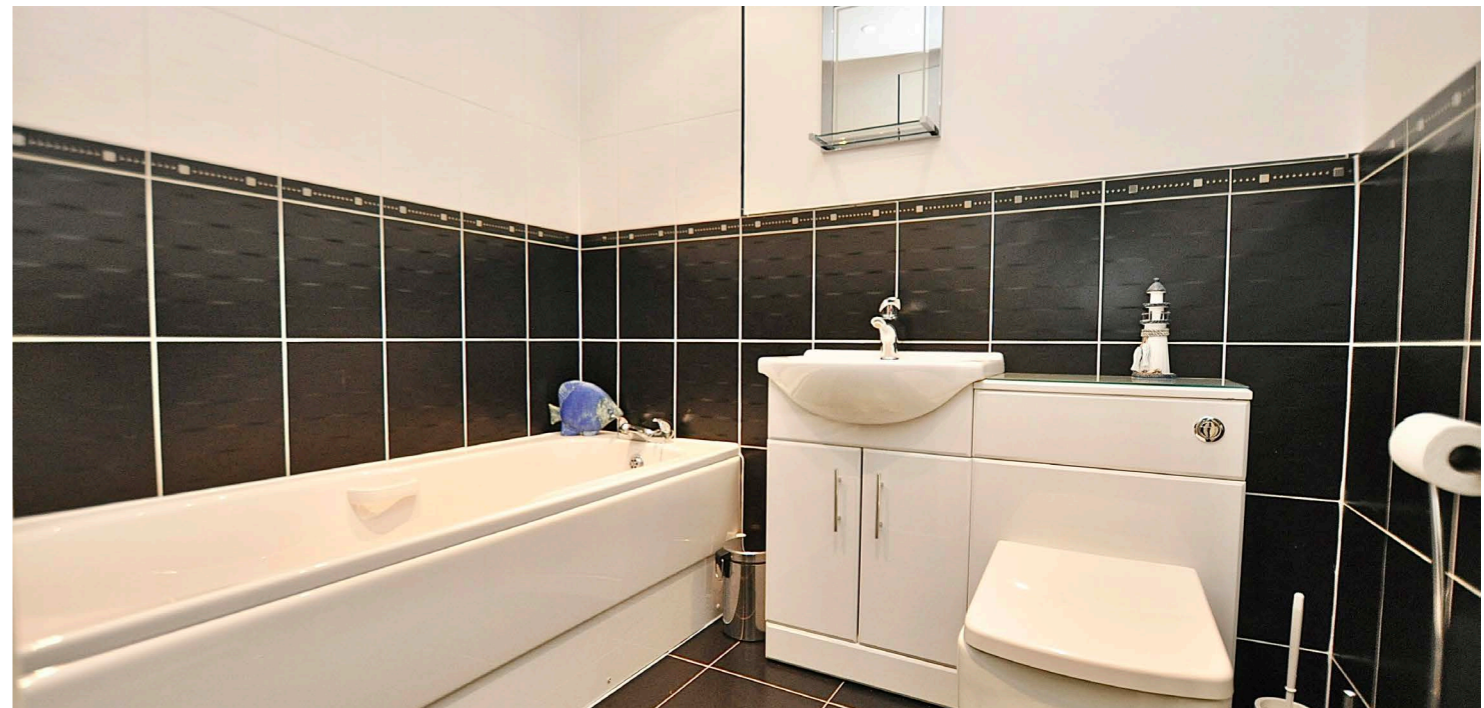
A bright, welcoming reception hall, offering excellent storage facilities, leads to the well-proportioned living accommodation on the ground floor. A good-sized lounge is open plan to a dining area and offers access to the balcony commanding beautiful views over the Firth of Clyde. The modern breakfasting kitchen has ample space for casual dining and enjoys splendid views. Also on this floor is a spacious double bedroom (Bedroom Two) with dressing room and en-suite. A further double bedroom (Bedroom Four) – currently used as a study/ TV room- sits next to the family bathroom.

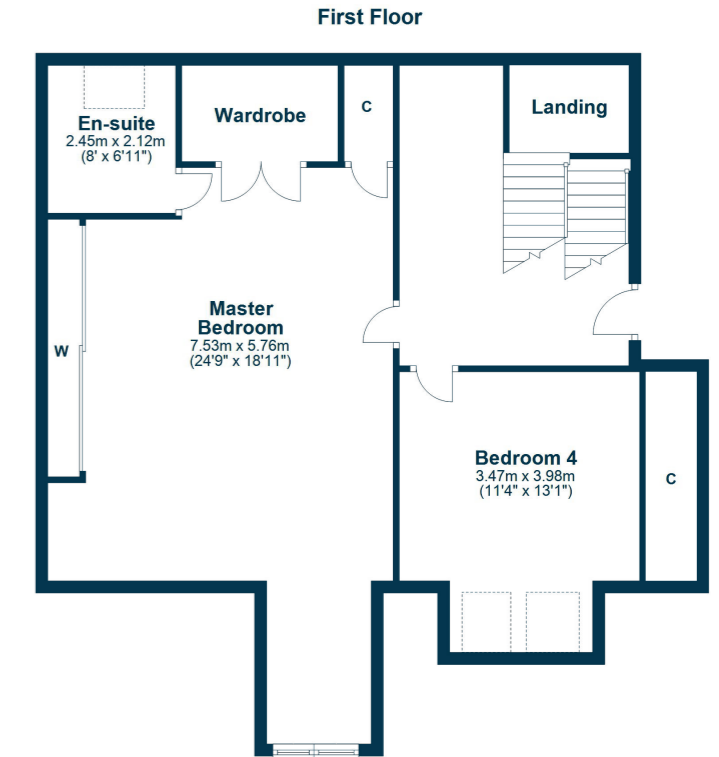
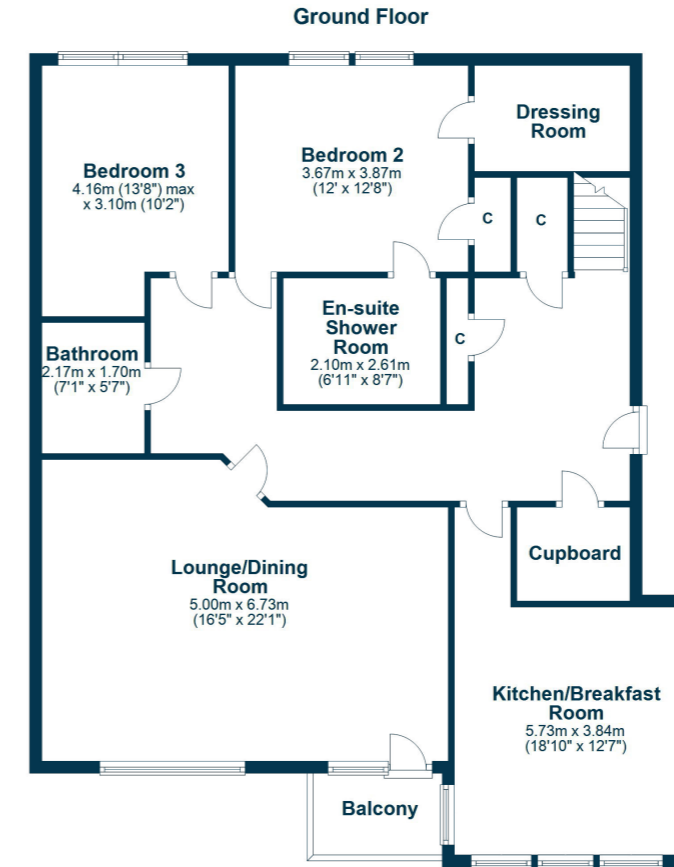
The first floor is accessed via a staircase from the ground floor hallway but also opens to the communal hallway on the floor above. Here there are two further bedrooms. The impressive Master (Bedroom One) has excellent wardrobe space and a sunny en-suite shower room. Bedroom Three is another generous double with impressive eaves storage.

The communal grounds at Rosebank Gardens are immaculately maintained with private allocated parking/ visitors' spaces are on site.









Largs is a popular holiday destination and is becoming increasingly popular for those looking for a seaside home in a town with a good range of amenities and recreational facilities. Largs Academy Campus (built 2018) incorporates Early Years Learning, Largs Primary and St Mary's Primary as well as the highly regarded Largs Academy. Inverclyde, Scotland's National Sport's centre has also recently been refurbished. The area has excellent travel links including Largs railway station, bus routes and easy access to the major road networks. There are many restaurants and hotels in the area, with the yacht marina and seafront being an attraction for many. Prestwick and Glasgow Airport offer regular flights throughout Britain, Ireland and Europe.

LA1939 | Sat Nav: 16 Rosebank Gardens, Largs, KA30 8TD

For the full home report visit www.corumproperty.co.uk

* All measurements and distances are approximate Floorplans are for illustration purposes and may not be to scale.



WE'RE **SOLD** ON
YOUR FUTURE


C O R U M

Corum Largs
66 Main Street, Largs, KA30 8AL

Tel: 01475 675 001

Email: largs@corumproperty.co.uk

www.corumproperty.co.uk