



FLAT 6, 38 WATERSIDE STREET

LARGS

www.corumproperty.co.uk





2 | BEDROOMS

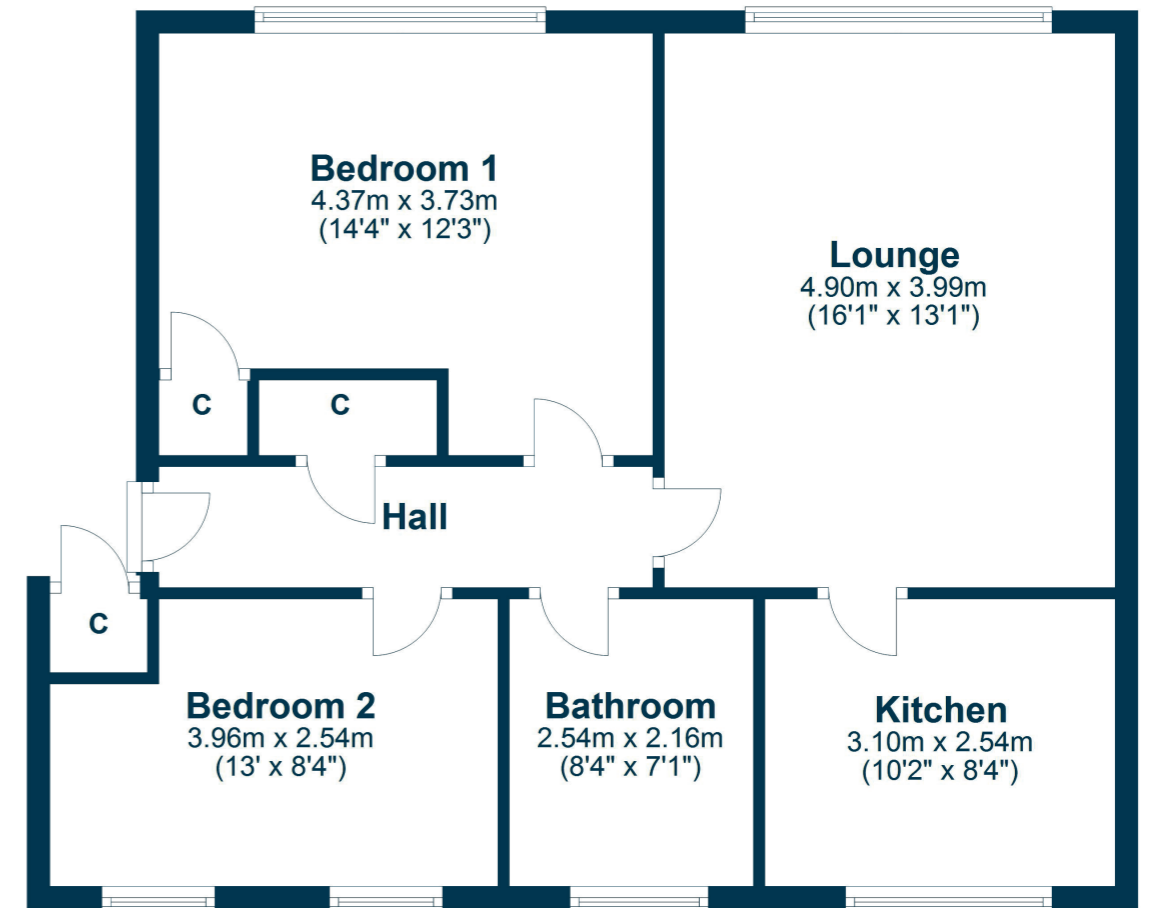
1 | BATHROOM

1 | PUBLIC ROOM

This excellent top floor flat is located close to the town centre and its many amenities. The property has two bedrooms along with a lounge which has an open plan dining area.

This top floor flat is situated amidst wonderful communal garden grounds whilst just being a short distance from the town centre, its restaurants, pubs, supermarket shopping, shorefront and many more amenities. The accommodation on offer extends to the reception hallway, lounge open plan to the dining area, modern kitchen, two double bedrooms and bathroom. The property has gas central heating and double glazing. The grounds to the rear back onto the Gogo burn and are well kept. Early viewing is highly recommended to appreciate the accommodation and location on offer.





Largs is a popular holiday destination and is becoming increasingly popular for those looking for a seaside home in a town with a good range of amenities and recreational facilities. The Largs Academy Campus (built 2018) incorporates Early Years Learning, Largs Primary and St Mary's Primary as well as the highly regarded Largs Academy. Inverclyde, Scotland's National Sport's centre has also recently been refurbished. The area has excellent travel links including Largs railway station, bus routes and easy access to the major road networks. There are many restaurants and hotels in the area, with the yacht marina and seafront being an attraction for many. Prestwick and Glasgow Airport offer regular flights throughout Britain, Ireland and Europe.

LA1953 | Sat Nav: Flat 6 (38) Waterside Street, Largs, KA30 9LR

For the full home report visit www.corumproperty.co.uk

* All measurements and distances are approximate Floorplans are for illustration purposes and may not be to scale.



WE'RE **SOLD** ON
YOUR FUTURE



Corum Largs
66 Main Street, Largs, KA30 8AL

Tel: 01475 675 001

Email: largs@corumproperty.co.uk

www.corumproperty.co.uk