



# 18 ELERSLIE GARDENS

LARGS

[www.corumproperty.co.uk](http://www.corumproperty.co.uk)





**2 | BEDROOMS**

**2 | BATHROOMS**

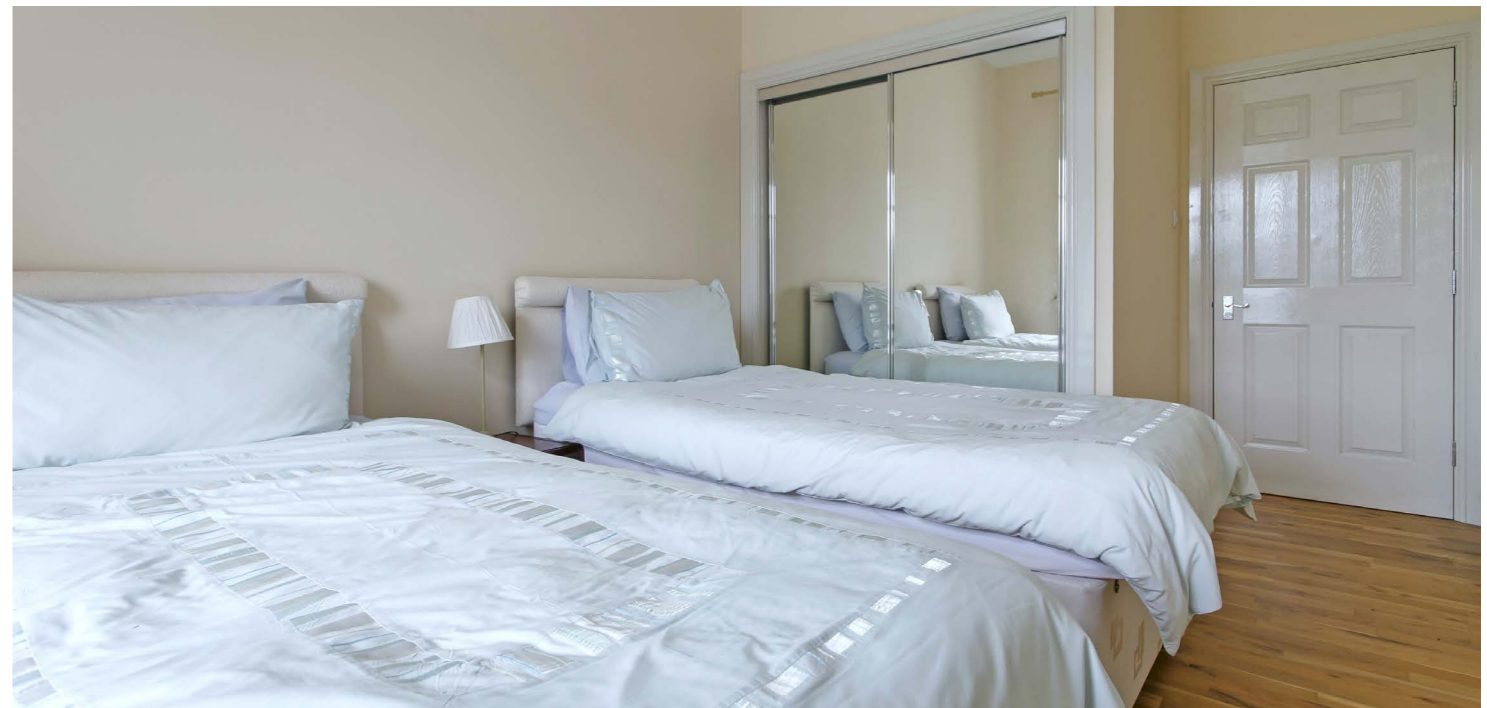
**1 | PUBLIC ROOM**

**This luxury apartment is part of the imposing sandstone property which was once the Elderslie Hotel. There are magnificent views of the Firth of Clyde, the esplanade and shorefront from every window of the apartment. Shops, restaurants and local amenities are close by in Largs town centre.**

18 Elderslie Gardens has great sea views from every window, out over the Isle of Cumbrae and beyond to the Isle of Arran. This luxury apartment forms part of an imposing sandstone villa. The well-proportioned accommodation on offer extends to a bright welcoming reception hallway, lounge with its feature bay window overlooking the Firth of Clyde, modern fitted kitchen with space for a relaxing coffee at the breakfasting table and two double bedrooms. Bedroom one has a modern en suite shower room and walk in dressing room. The modern bathroom has a four-piece suite. The property has gas central heating and double glazing. There are communal areas and communal grounds along with a private allocated parking space. On the mid landing of the building there is an excellent storage cupboard. Early viewing is highly recommended to appreciate the accommodation and location on offer

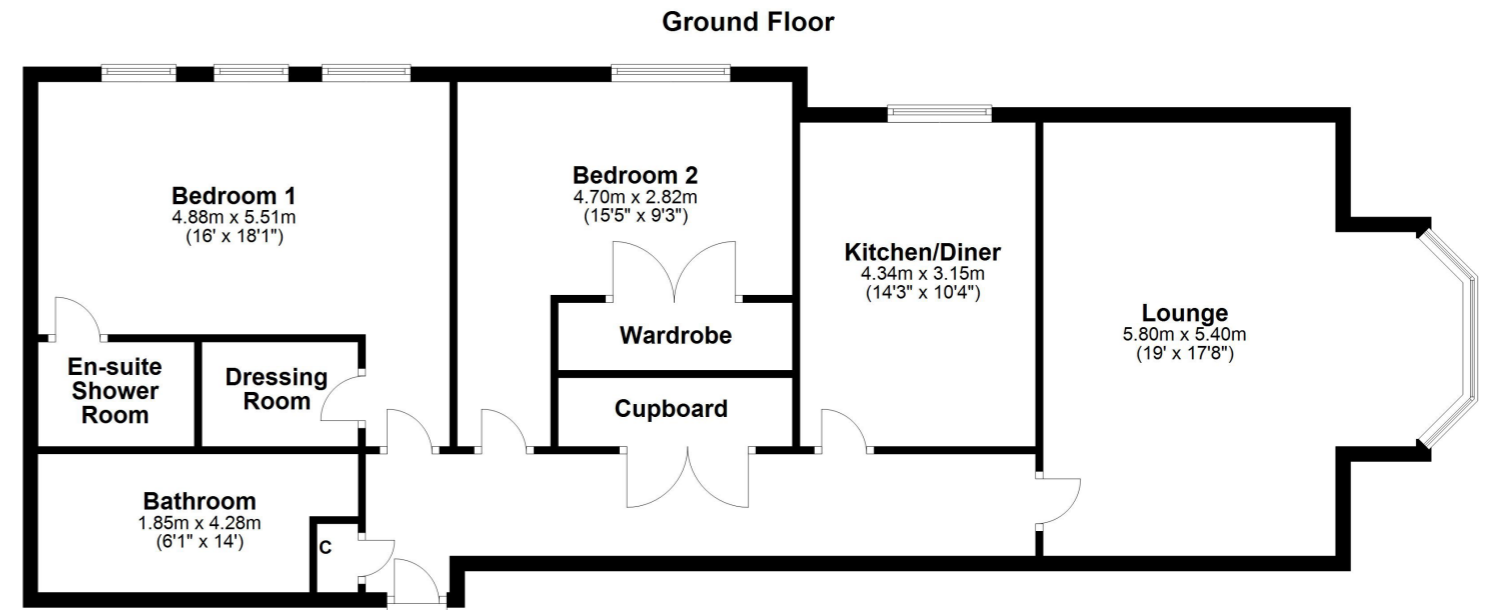












Largs is a popular holiday destination and is becoming increasingly popular for those looking for a seaside home in a town with a good range of amenities and recreational facilities. The Largs Academy Campus (built 2018) incorporates Early Years Learning, Largs Primary and St Mary's Primary as well as the highly regarded Largs Academy. Inverclyde, Scotland's National Sport's centre has also recently been refurbished. The area has excellent travel links including Largs railway station, bus routes and easy access to the major road networks. There are many restaurants and hotels in the area, with the yacht marina and seafront being an attraction for many. Prestwick and Glasgow Airport offer regular flights throughout Britain, Ireland and Europe.

**LA1949** | Sat Nav: 18 Elderslie Gardens, Largs KA30 8FD

For the full home report visit [www.corumproperty.co.uk](http://www.corumproperty.co.uk)

\* All measurements and distances are approximate Floorplans are for illustration purposes and may not be to scale.





WE'RE **SOLD** ON  
YOUR FUTURE

  
C O R U M

Corum Largs  
66 Main Street, Largs, KA30 8AL

**Tel:** 01475 675 001

**Email:** [largs@corumproperty.co.uk](mailto:largs@corumproperty.co.uk)

[www.corumproperty.co.uk](http://www.corumproperty.co.uk)