



CRESCENT LODGE

4 MAY STREET, LARGS

www.corumproperty.co.uk





3 | BEDROOMS

3 | BATHROOMS

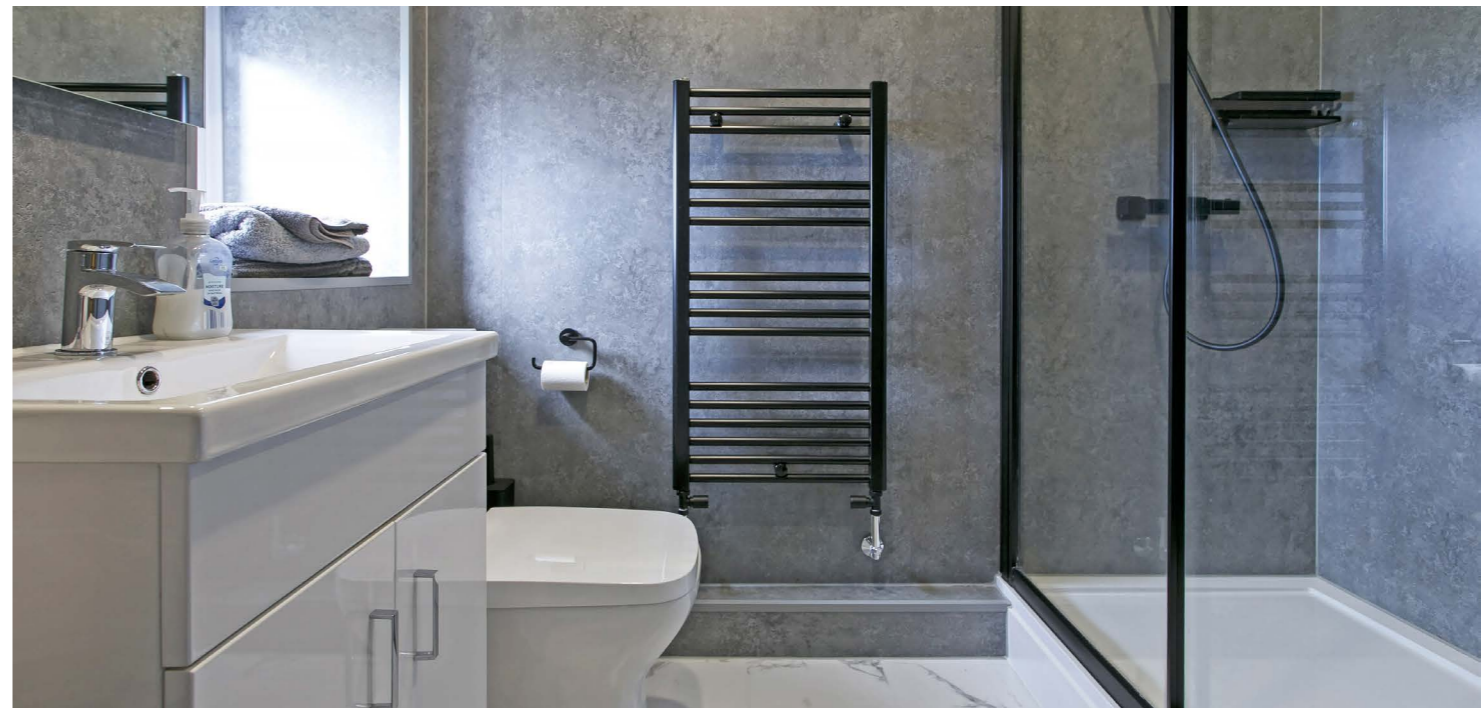
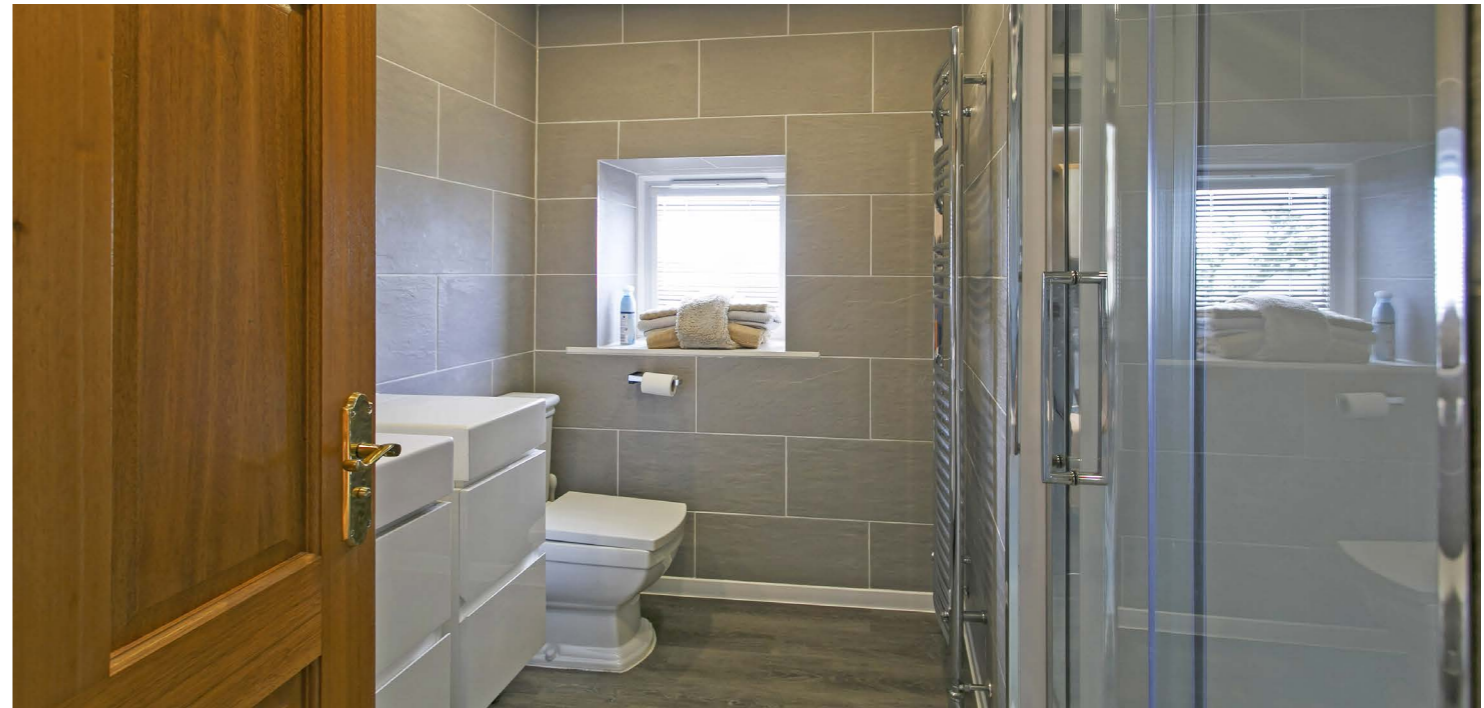
1 | PUBLIC ROOM

Crescent Lodge is an iconic building which is located at the foot of May Street with easy access to the esplanade. The property has quite wonderful views out over the Firth of Clyde, Cumbrae and Arran in the West. Largs town centre has a broad range of amenities and is within easy reach of this quality home.

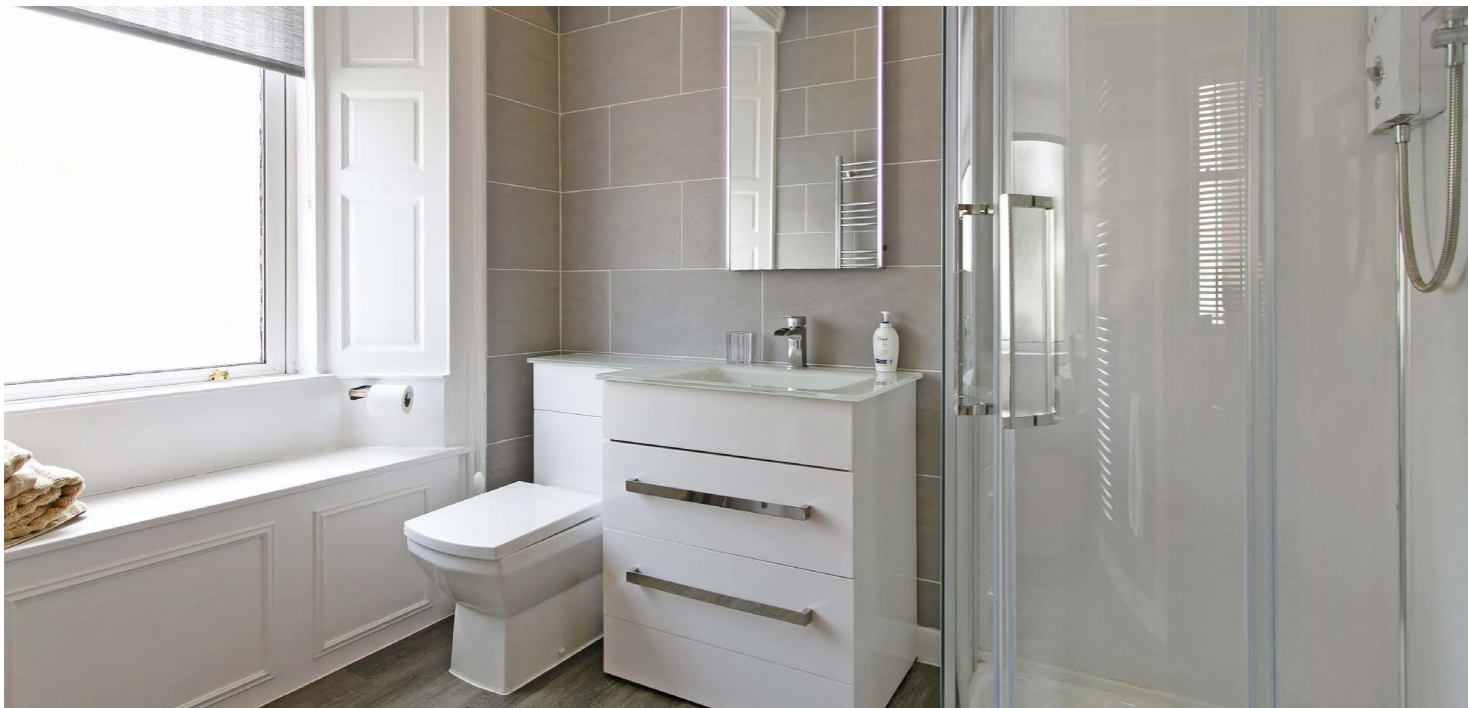
4 May Street is a character home set on the ground floor of Crescent Lodge. A traditional property of which there are only three apartments within the building along with the great views. The excellent accommodation on offer extends to bright welcoming reception hallway, exceptional drawing room open plan to a dining area along with its feature bow window and its elevated Firth of Clyde views, modern fitted kitchen, three bedrooms. The Master Bedroom has a modern en-suite shower room, Bedroom two has an en-suite. The property has gas central heating and double glazing. There are pleasant communal garden grounds, and the property has Three allocated parking spaces , as well as visitor parking. Early viewing is highly recommended to appreciate the accommodation and location on offer.

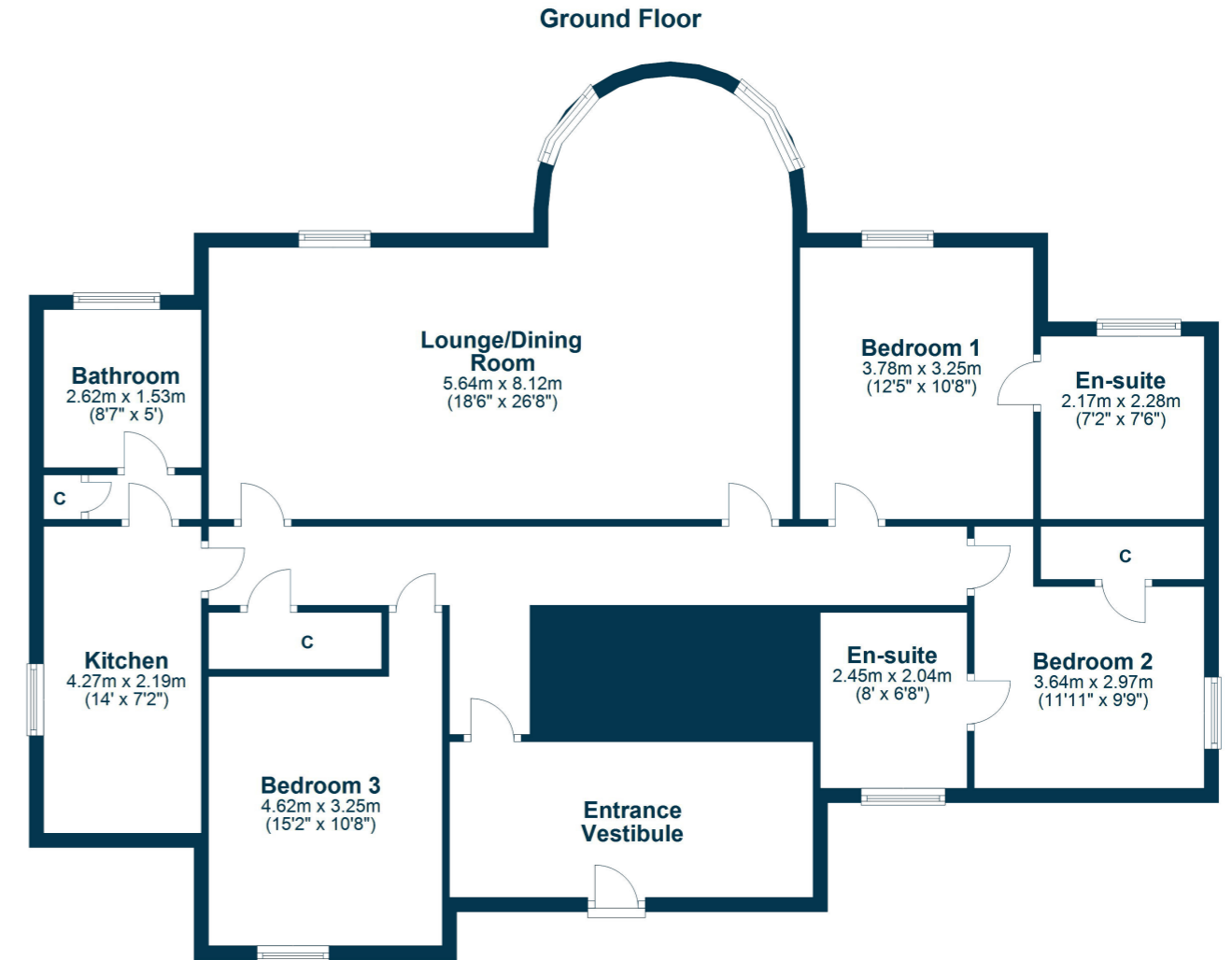












Largs is a popular holiday destination and is becoming increasingly popular for those looking for a seaside home in a town with a good range of amenities and recreational facilities. The Largs Academy Campus (built 2018) incorporates Early Years Learning, Largs Primary and St Mary's Primary as well as the highly regarded Largs Academy. Inverclyde, Scotland's National Sport's centre has also recently been refurbished. The area has excellent travel links including Largs railway station, bus routes and easy access to the major road networks. There are many restaurants and hotels in the area, with the yacht marina and seafront being an attraction for many. Prestwick and Glasgow Airport offer regular flights throughout Britain, Ireland and Europe.

LA1946 | Sat Nav: Crescent Lodge, 4 May Street, Largs, KA30 8EB

For the full home report visit www.corumproperty.co.uk

* All measurements and distances are approximate Floorplans are for illustration purposes and may not be to scale.

WE'RE **SOLD** ON
YOUR FUTURE



C O R U M

Corum Largs
66 Main Street, Largs, KA30 8AL

Tel: 01475 675 001

Email: largs@corumproperty.co.uk

www.corumproperty.co.uk