



**2 CARLUNG HOUSE, CARLUNG ESTATE**

WEST KILBRIDE

[www.corumproperty.co.uk](http://www.corumproperty.co.uk)





3 | BEDROOMS

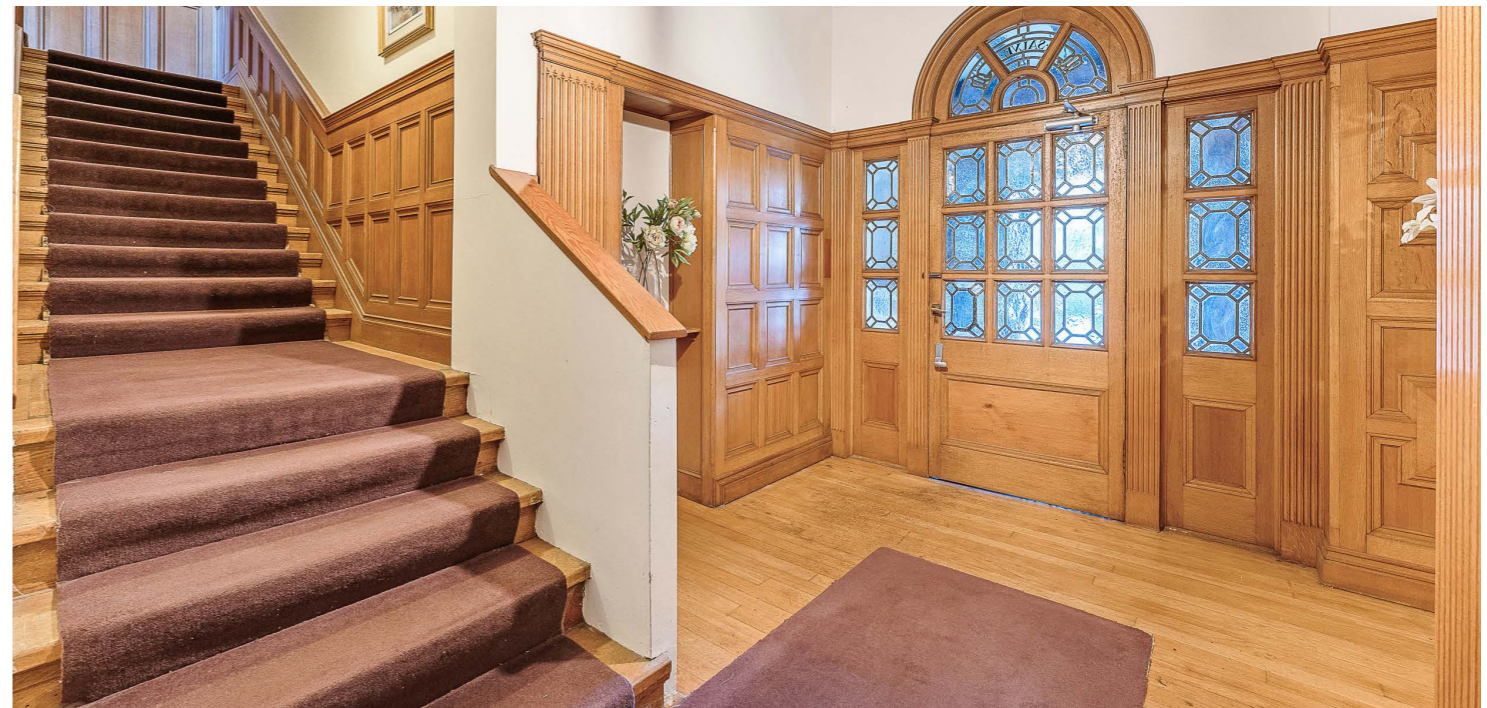
1 | BATHROOM

2 | PUBLIC ROOMS

**This wonderful apartment forms part of Carlung House which is a B-Listed mansion house set within extensive mature ground's. Not only this, the property is located in close proximity to the seafront, craft town of West Kilbride and the villages of Portencross & Seamill.**

Located in this woodland setting within a mile of the popular seaside craft town of West Kilbride and enjoying private use of extensive lawned gardens, 2 Carlung House is a stunning apartment occupying a substantial part of this imposing B listed Mansion house. The property is presented in immaculate order and retains many original features including hardwood flooring, leaded windows and extensive Austrian oak paneling to many of the internal walls.

An imposing entrance hallway gives stairway access to the apartment. On entering, an inner reception hallway with study area gives access to a fabulous formal lounge with feature Austrian oak panelled walls and a box bay window giving panoramic views over the lawned gardens and woodland beyond. The kitchen is accessed from both the lounge and reception hall and is fitted with a range of shaker style walls and base units with breakfast bar and work surfaces. Integrated appliances include electric ceramic hob, double oven and extractor. The property has three bedrooms. The master bedroom is of impressive proportion and features a working fire place inset to a paneled inglenook. The bathroom is fitted with a modern four piece suite to include WC, wash hand basin, larger style walk in shower cubicle and stand alone bath. In addition to the above the property has high quality secondary glazing, well maintained hardwood flooring, Austrian oak paneling, garage and large allocated lawned gardens in addition to the common lawned gardens and mature woodland that surround the development. Early viewing is highly recommended to appreciate the character accommodation and stunning location on order.







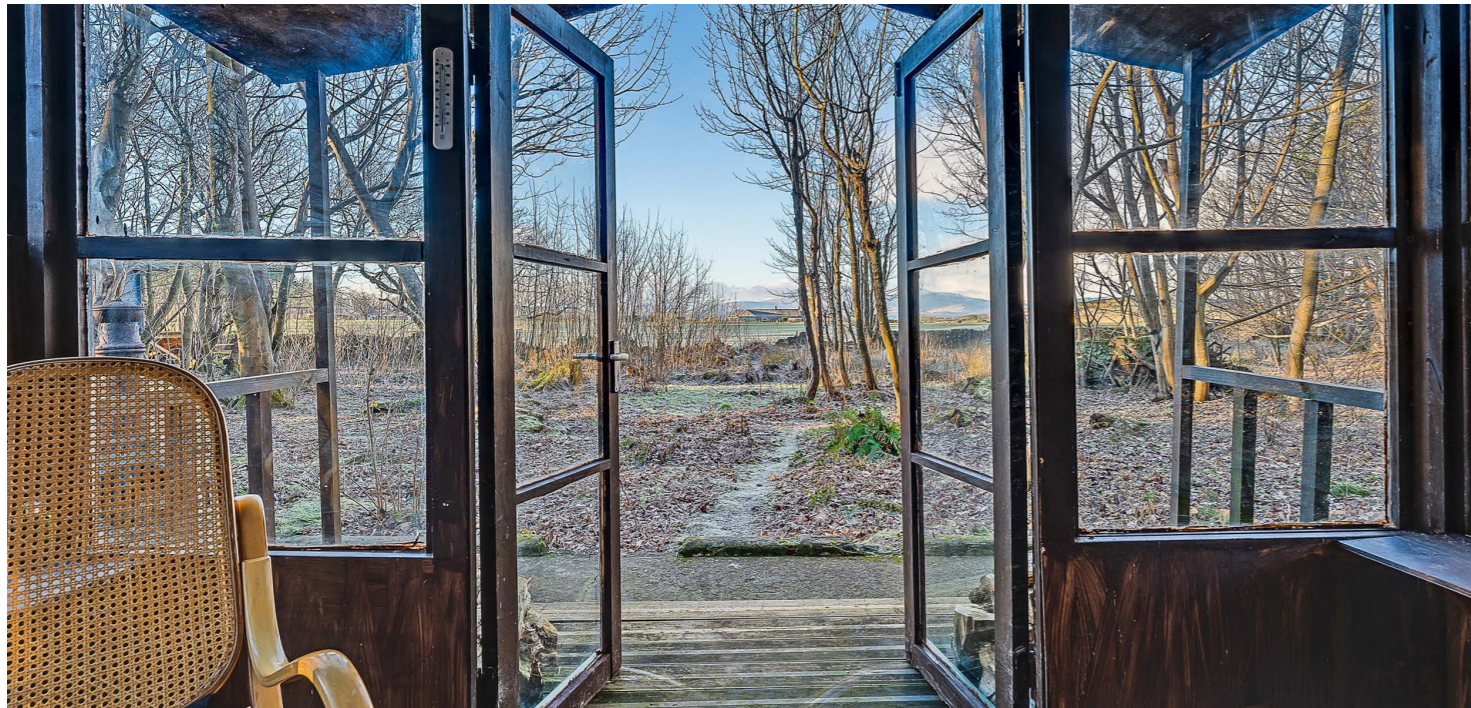


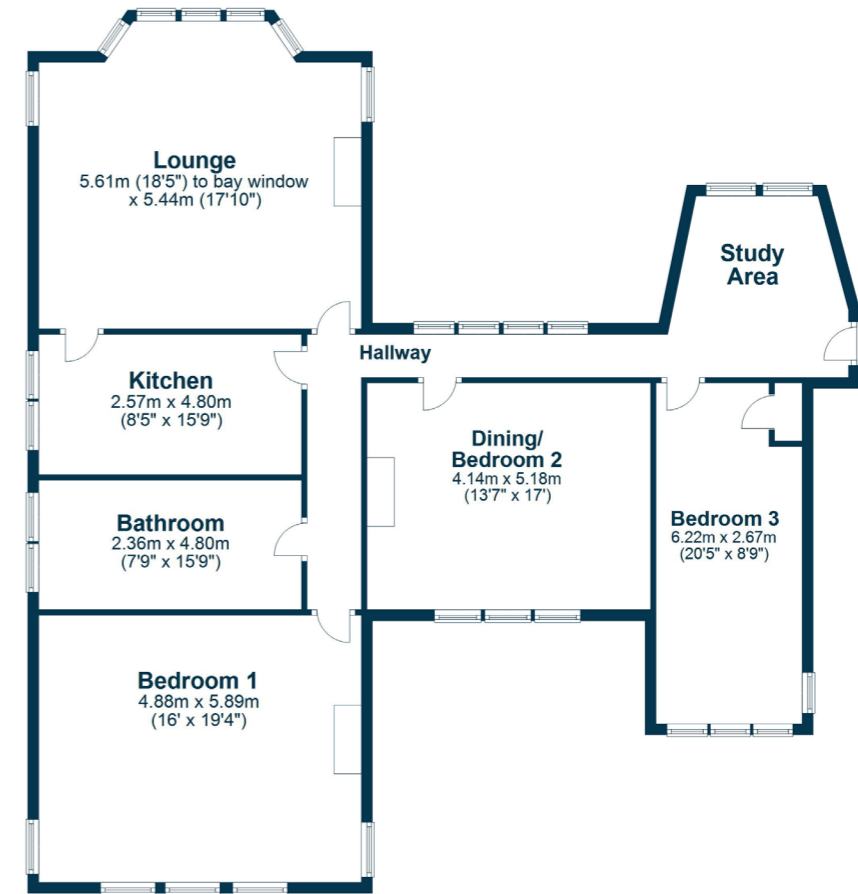
*Some have made and some eat,  
and some want it that want it,  
But we have made and we can eat  
And see let the Lord be thanked!*











Located in this woodland setting within a mile of the popular seaside craft town of West Kilbride and enjoying private use of extensive lawned gardens, 2 Carlung House is a stunning apartment occupying a substantial part of this imposing B listed Mansion house. The property is presented in immaculate order and retains many original features including hardwood flooring, leaded windows and extensive Austrian oak paneling to many of the internal walls.

An imposing entrance hallway gives stairway access to the apartment. On entering, an inner reception hallway with study area gives access to a fabulous formal lounge with feature Austrian oak panelled walls and a box bay window giving panoramic views over the lawned gardens and woodland beyond. The kitchen is accessed from both the lounge and reception hall and is fitted with a range of shaker style walls and base units with breakfast bar and work surfaces. Integrated appliances include electric ceramic hob, double oven and extractor. The property has three bedrooms. The master bedroom is of impressive proportion and features a working fire place inset to a paneled inglenook. The bathroom is fitted with a modern four piece suite to include WC, wash hand basin, larger style walk in shower cubicle and stand alone bath. In addition to the above the property has high quality secondary glazing, well maintained hardwood flooring, Austrian oak paneling, garage and large allocated lawned gardens in addition to the common lawned gardens and mature woodland that surround the development. Early viewing is highly recommended to appreciate the character accommodation and stunning location on order.

**LA1882** | Sat Nav: 2 Carlung House, Carlung Estate, West Kilbride, KA23 9PU

For the full home report visit [www.corumproperty.co.uk](http://www.corumproperty.co.uk)

\* All measurements and distances are approximate Floorplans are for illustration purposes and may not be to scale.



WE'RE **SOLD** ON  
YOUR FUTURE



Corum Largs  
66 Main Street, Largs, KA30 8AL

**Tel:** 01475 675 001

**Email:** [largs@corumproperty.co.uk](mailto:largs@corumproperty.co.uk)

[www.corumproperty.co.uk](http://www.corumproperty.co.uk)