

ASHCRAIG

Shore Road, Skelmorlie



c o r u m

corumproperty.co.uk







Originally constructed around 1825, Ashcraig is a modern mansion, totalling 10,500 square feet on Skelmorlie's coastline, boasting additions by the renowned Architect John Honeyman. Honeyman enhanced the property with an extension to the north side, turret and conservatory, allowing the property to feature spacious and superior living areas. The current owners purchased Ashcraig in 2003 from previous owners of 30 years' residency.

Ashcraig is a stunning, detached, red-sandstone mansion, nestled within 11 acres of mature gardens, which were originally laid by Henry Watson for the original owner Mr A.O. Campbell, a West Indian Sugar Planter. Also erected was a small concrete chapel, which now exists as a small dwelling house at the entrance to the grounds. The property's grounds also include a tennis court, paddock and five hundred metres of private beach front, allowing it to be undoubtedly one of the finest examples of its type ever on the market. Meticulously restored to its former glory using a professional combination of modern and traditional materials, Ashcraig's current owners have spent eight years thoughtfully extending, developing, and upgrading the property to include all aspects of luxury modern life. With an internal area extending to a huge 10,500 thousand square feet, Ashcraig boasts space and superiority whilst maintaining its charm and intimacy.

The property's interior space includes four double bedrooms all with en suite facilities. The master bedroom has been re-designed to include a walk-in dressing room and large family bathroom, with jacuzzi and stunning garden views. Also included in the property's interior is a reception hallway, large formal drawing room, formal dining room and an office/study. A stunning Smallbone kitchen with dining area leading to a spacious family area and stunning conservatory to the front. There is also access to a sheltered entertaining deck with views of the gardens from the side. Also leading on from this is a recreation annex that currently hosts a fully equipped gymnasium with a juice bar, a luxurious spa including a steam room as well as an eight-person sauna and hot tub with walk in shower and separate shower room. On the lower floor there is a utility room, large games room with a bar, a children's playroom, a modern home theatre, and a wine cellar. Also on this floor there is a comms room, two storage rooms, two boiler rooms and extensive safe room, there is also an access to a large car garage that can house up to 4 vehicles, circa 1500 square feet.

Externally, the property offers a sweeping driveway with a sandstone gatehouse leading past the tennis court, through the lawned gardens to extensive parking.









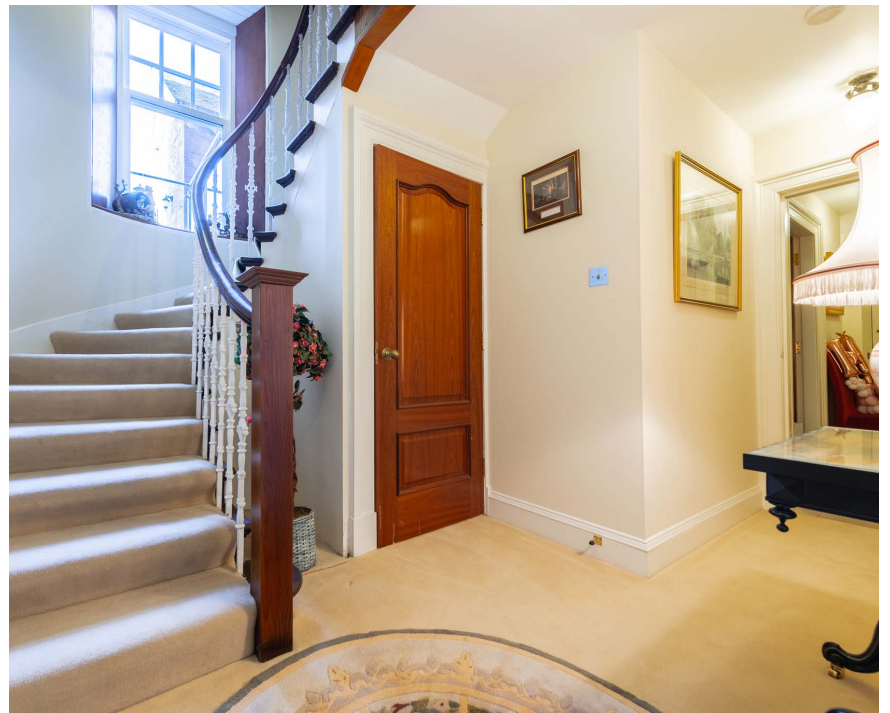
















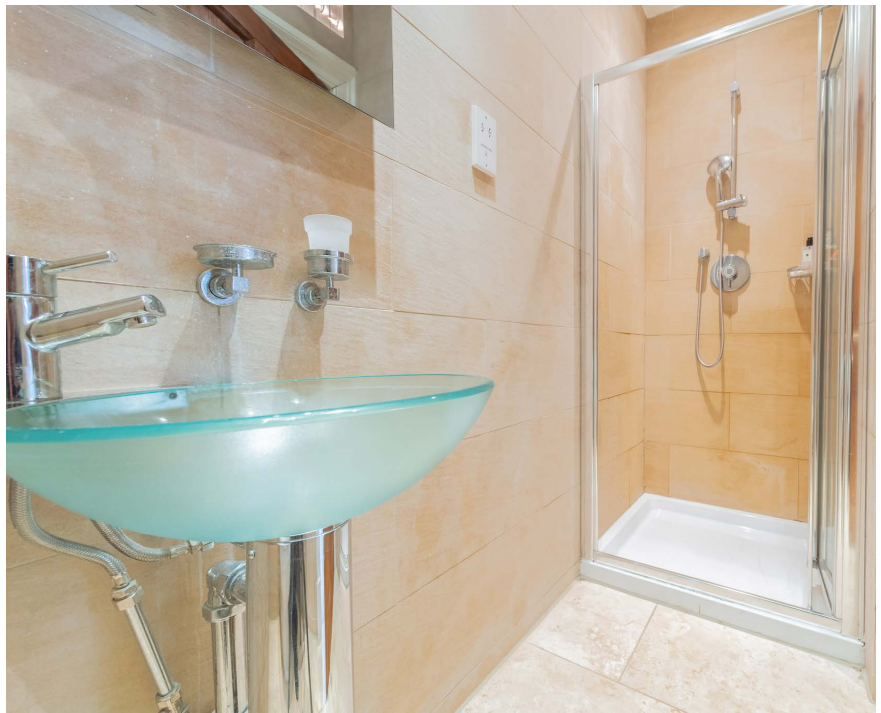














LA1509 | Sat Nav: Ashcraig, Shore Road, Skelmorlie, PA17 5HB

* All measurements and distances are approximate Floorplans are for illustration purposes and may not be to scale.





c o r u m

66 Main Street, Largs KA30 8AL

Tel: 01475 675 001

Email: largs@corumproperty.co.uk

www.corumproperty.co.uk