



Maryport Drive, Timperley, Cheshire, WA15

Guide Price: £185,000

Leasehold

Maryport Drive, Timperley, Cheshire, WA15

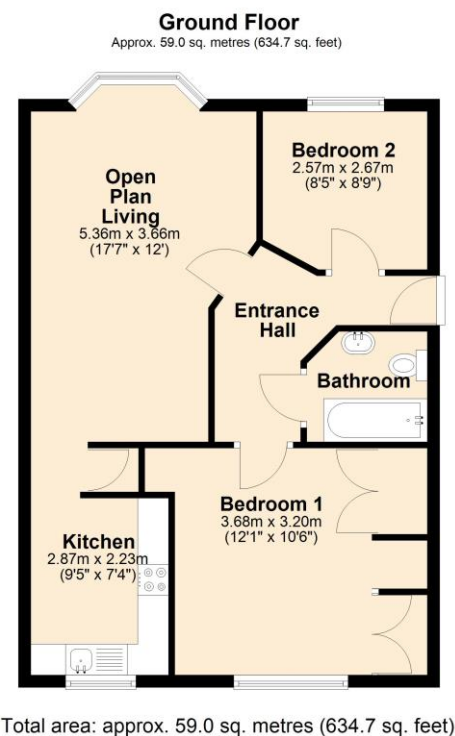
**** Offered with NO ONWARD CHAIN ****

Situated within the sought-after Kentmore Place development on Maryport Drive in Timperley, this spacious ground floor apartment ready for a buyer to make it their own. Perfect for first-time buyers, downsizers, or investors. The property benefits from its ground floor position, making access easy and convenient, and is located in a quiet residential area with excellent local amenities and transport links nearby.

The apartment features a large open plan living and dining room, providing a bright and versatile space ideal for both relaxing and entertaining. The modern fitted kitchen is equipped with a range of base and eye-level units, complemented by roll top work surfaces and ample storage, designed to suit a contemporary lifestyle.

There are two generous double bedrooms, both offering comfortable accommodation with space for wardrobes and furnishings. The bathroom is fitted with a white suite, including a bath with overhead shower, basin, and WC.

Outside, the property benefits from allocated parking and access to well-maintained communal grounds, allowing residents to enjoy outdoor space without the upkeep. Offered with no onward chain, this apartment presents an excellent opportunity to secure a ready-to-move-into home in a desirable Timperley location.



- Leasehold
- 125Yrs 1/7/2004
- Ground Rent TBC
- EPC TBC





The Property Man

102A School Road

Sale

Cheshire

M33 7XB

T: 01615198855

E: sales@thepropertyman.co.uk

www.thepropertyman.co.uk

The Property Man

Registered Office Address: 7 St. Petersgate, Stockport, England, SK1 1EB Company Reg No: 09023087

Disclaimer

Every attempt has been made to ensure accuracy, however these property particulars are approximate and for illustrative purposes only. They have been prepared in good faith and they are not intended to constitute part of an offer of contract. We have not carried out a structural survey and the services, appliances and specific fittings have not been tested. All photographs, measurements, floor plans and distances referred to are given as a guide only and should not be relied upon for the purchase of any fixture or fittings. Lease details, service charges and ground rent (where applicable) are given as a guide only and should be checked prior to agreeing a sale.