



**Dorchester Court, Station Road, Cheadle Hulme,  
SK8**

**Offers Over: £205,000**

*Leasehold*

# Dorchester Court, Station Road, Cheadle Hulme, SK8

We are pleased to welcome to the market this TWO Bedroom Second floor apartment at Dorchester Court, Station Road in Cheadle Hulme. Allocated and visitors parking available, with a Garage included.

Within walking distance to Cheadle Hulme Village, local parks and amenities, this property is ideal for First Time Buyers and Investors.

In brief the property comprises of;

Spacious Hallway leading to access for all rooms.

French doors inviting you into a bright Living / Dining Area, with heaps of space and natural light.

Kitchen with a range of cream fitted base and wall units, Gas Hob with Double Oven, Vaillant Combi-Boiler, Space for Fridge/Freezer and Washing Machine.

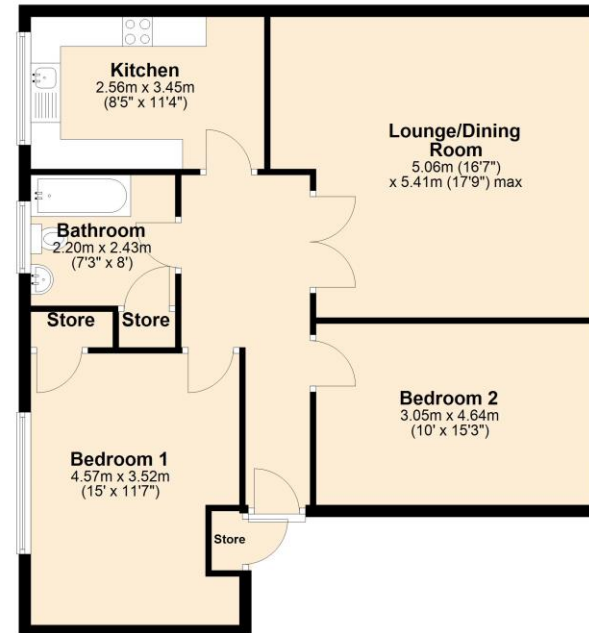
Bedroom One can accommodate a Double bed, allowing additional space for Wardrobes, with a Store cupboard ideal for storage.

Bedroom Two will also accommodate a double bed, with fitted wardrobes included too.

Bathroom is Tiled, with a Full Size Bath, Electric Shower, Hand Basin and W/C.

In need of Modernisation, but still in livable condition, the versatility and potential this property offers is perfect for a wide range of buyers.

**Ground Floor**  
Approx. 83.3 sq. metres (896.9 sq. feet)



Total area: approx. 83.3 sq. metres (896.9 sq. feet)

- Leasehold
- 999 years from 25 December 1972
- Ground rent – £20pa
- Service charge £250pcm
- Council Tax Band C
- EPC Grade TBC





## The Property Man

102A School Road  
Sale  
Cheshire  
M33 7XB

T: 01615198855

E: [sales@thepropertyman.co.uk](mailto:sales@thepropertyman.co.uk)

[www.thepropertyman.co.uk](http://www.thepropertyman.co.uk)

The Property Man

Registered Office Address: 7 St. Petersgate, Stockport, England, SK1 1EB Company Reg No: 09023087

### Disclaimer

Every attempt has been made to ensure accuracy, however these property particulars are approximate and for illustrative purposes only. They have been prepared in good faith and they are not intended to constitute part of an offer of contract. We have not carried out a structural survey and the services, appliances and specific fittings have not been tested. All photographs, measurements, floor plans and distances referred to are given as a guide only and should not be relied upon for the purchase of any fixture or fittings. Lease details, service charges and ground rent (where applicable) are given as a guide only and should be checked prior to agreeing a sale.