



**Delamere Street, Winsford, Cheshire East, CW7**

**Offers in excess of:  
£425,000**

# Delamere Street, Winsford, Cheshire East, CW7

**\*\* FOUR BRAND NEW DORMA DETACHED BUNGALOWS - Available AUTUMN 2024 \*\***

Welcome to Delamere Street, Winsford a brand new development of FOUR bespoke detached Dorma bungalow homes, These beautiful homes offer a unique blend of contemporary design and timeless elegance. Nestled in a charming neighbourhood, these bungalows are crafted with precision and attention to detail.

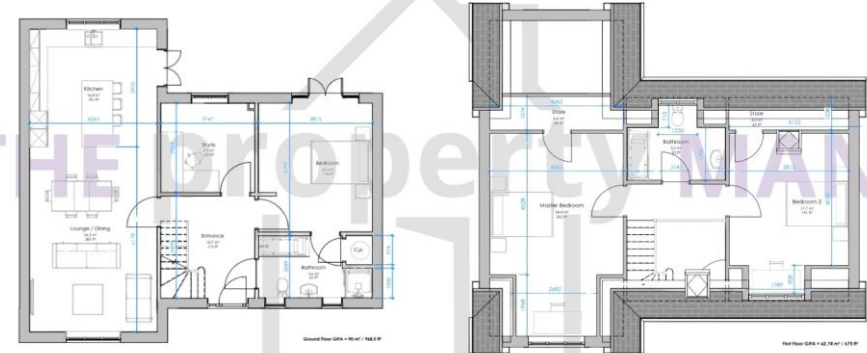
A perfect example of luxury with high-specification design and finishes. From the moment you step inside, you'll be greeted by open-plan living spaces that seamlessly connect the heart of your home. Enjoy the perfect balance of comfort and style, designed to elevate your lifestyle.

Discover spacious living with three well-appointed bedrooms, each offering a haven of relaxation. Indulge in the comfort of your main bedroom, complete with an en-suite bathroom for your privacy and convenience. Need a quiet space to work or study? These thoughtfully designed properties feature an additional study, providing flexibility and convenience for your modern lifestyle.

Your convenience is our priority. Each property comes with dedicated off-road parking, ensuring hassle-free arrivals. Step outside to enjoy the beautifully landscaped gardens, a perfect retreat for alfresco dining and entertaining.



## Delamere Street - Plot 1



Ground Floor

First Floor

- Freehold
- EPC TBC
- Council Tax Band TBC





## The Property Man

102A School Road  
Sale  
Cheshire  
M33 7XB

T: 01615198855  
E: [sales@thepropertyman.co.uk](mailto:sales@thepropertyman.co.uk)  
[www.thepropertyman.co.uk](http://www.thepropertyman.co.uk)

The Property Man  
Registered Office Address: 7 St. Petersgate, Stockport, England, SK1 1EB Company Reg No: 09023087

### Disclaimer

Every attempt has been made to ensure accuracy, however these property particulars are approximate and for illustrative purposes only. They have been prepared in good faith and they are not intended to constitute part of an offer of contract. We have not carried out a structural survey and the services, appliances and specific fittings have not been tested. All photographs, measurements, floor plans and distances referred to are given as a guide only and should not be relied upon for the purchase of any fixture or fittings. Lease details, service charges and ground rent (where applicable) are given as a guide only and should be checked prior to agreeing a sale.