

Cranbrook Road, Eccles, Manchester, M30

Guide Price: £265,000

Freehold



Introducing two brand-new, stunning semi-detached homes in the heart of Eccles, Manchester. These meticulously designed homes offer the perfect combination of modern living, comfort, and style. With spacious living areas, a contemporary kitchen diner, three bedrooms, a luxurious main bedroom with an en-suite bathroom, and a family bathroom, these homes are perfect for families and individuals looking for the best in comfort and convenience.

Key Features:

Living Room: The spacious living room is designed for relaxation. With large windows that allow natural light to flood the room, it's the perfect space to unwind with friends and family.

Kitchen Diner: The heart of these homes is the modern kitchen diner. Featuring sleek countertops, high-quality appliances, it opens to a dining area, making it ideal for entertaining.

Bedrooms: These homes boast three generously sized bedrooms. Each room is designed to accommodate your family's needs, whether you need space for children, a home office, or a guest room.

Main Bedroom with En-Suite Bathroom: The main bedroom is a sanctuary with an en-suite bathroom for your convenience. The en-suite is elegantly designed with modern fixtures and a spacious shower.

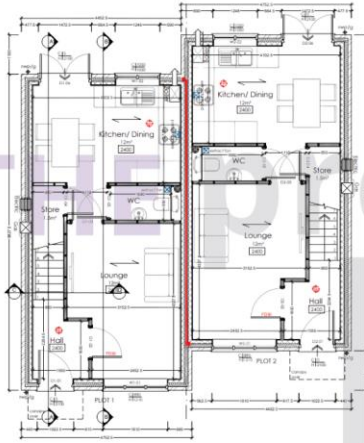
Family Bathroom: The family bathroom is equally well-appointed, featuring a bathtub, shower, and contemporary fixtures.

Garden: These homes come with a private garden, providing you with an outdoor oasis to enjoy sunny days and alfresco dining.

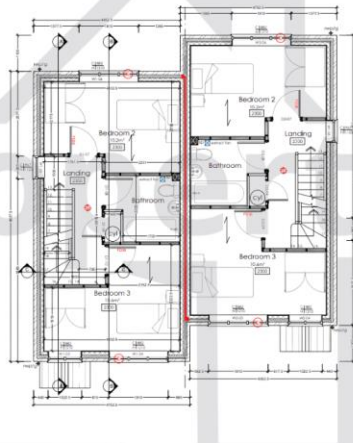
Parking: Each home has private parking, ensuring that you never have to worry about finding a parking space.



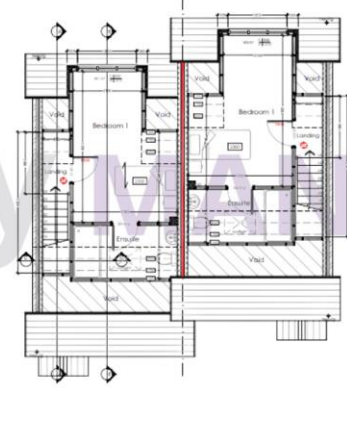
Cranbrook Road, Eccles



Ground Floor



First Floor



Second Floor

The Property Man - The Property Man

102A School Road

Sale

Cheshire

M33 7XB

T: 01615198855

E: sales@thepropertyman.co.uk

www.thepropertyman.co.uk

The Property Man

Registered Office Address: 7 St. Petersgate, Stockport, England, SK1 1EB Company Reg No:

Disclaimer

Every attempt has been made to ensure accuracy, however these property particulars are approximate and for illustrative purposes only. They have been prepared in good faith and they are not intended to constitute part of an offer of contract. We have not carried out a structural survey and the services, appliances and specific fittings have not been tested. All photographs, measurements, floor plans and distances referred to are given as a guide only and should not be relied upon for the purchase of any fixture or fittings. Lease details, service charges and ground rent (where applicable) are given as a guide only and should be checked prior to agreeing a sale.