



IMAGE SUPPLIED BY CABRO AVIATION LTD

ICONIC REGIONAL
LANDMARK

IN THE HEART OF
ABERDEEN'S WEST END

UNIQUE OPPORTUNITY
TO OWN A PIECE OF
ABERDEEN'S HISTORY

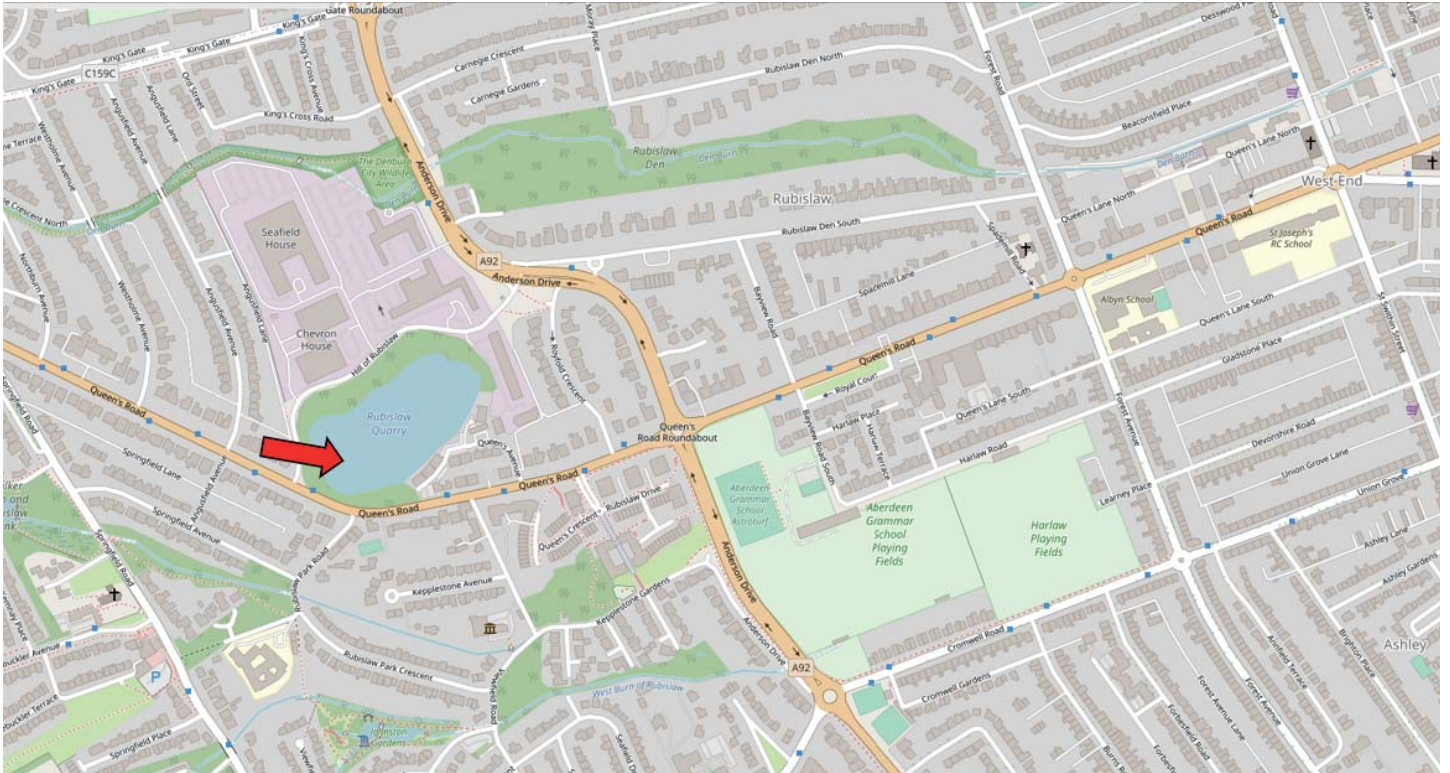


FOR SALE
Rubislaw Quarry

Aberdeen

To request a viewing call us on 01224 572661

FGBURNETT.CO.UK



RARELY AVAILABLE LANDMARK IN THE HEART OF ABERDEEN'S WEST END

LOCATION

The site is situated within the West End of the city of Aberdeen, located on the southern edge of the Hill of Rubislaw office park located between its junction with Anderson Drive and Queen's Road.

The surrounding area comprises a mix of residential and commercial occupiers with a number of large office buildings, which is home to Harbour Energy, Ithaca Energy, PureGym and easyHub Offices.

The area has excellent access to nearby road networks, with the A92 linking the north and south and to the west via the B9119.

OPPORTUNITY

A one of a kind opportunity is being offered in the market, presenting potential buyers with the chance to become the owners of a truly unique historic landmark nestled in the heart of the city of Aberdeen.

After its closure, the quarry has undergone a remarkable transformation into a scenic water-filled expanse, teeming with vibrant natural wildlife. This rejuvenated setting has also served as a venue for various recreational water sports activities.

The site under heritable ownership is highlighted yellow on the overleaf plan.

HISTORY

Rubislaw Quarry is one of the largest man-made quarries in Europe and the source of the distinctive stone which gives Aberdeen its reputation as "The Granite City". It is estimated that over six million tonnes of granite were extracted from the quarry over a period of 200 years with the majority of Aberdeen's prestigious buildings made from the quarry's contents.

With buildings being increasingly built from cheaper materials, the last granite from Rubislaw was extracted in the early 1970s. Following its closure, the site was eventually put up for sale in around 2010 where it was purchased by the current owners.



PLANNING

The site is zoned as Green Space Network (NE2) within the adopted Aberdeen Local Development Plan. Although it is not situated within a formally designated conservation area, it holds significance as part of Aberdeen's Local Nature Conservation sites, with a protected area covered by a Tree Preservation Order.

Looking at the wider site, as highlighted on the plan, the brown highlighted area has been identified for prospective residential development in the future. It has obtained outline planning permission for 245 private residential dwellings, subject to a number of conditions. Detailed Title information pertaining to access rights is readily available to genuinely interested parties.

The pink area has already been developed.

PRICE

Offers invited.

LEGAL COSTS

Each party will bear their own legal costs. The purchaser will be responsible for any LBTT and Registration Dues.

VAT

Any figures quoted are exclusive of VAT.

ANTI MONEY LAUNDERING (AML)

To satisfy HMRC and RICS guidance, FG Burnett is required to undertake AML diligence on both the purchasers and vendors. Accordingly, a successful bidder will be required to provide detailed financial and corporate information and FG Burnett will undertake the necessary "Know Your Client" identity checks to satisfy AML requirements when Heads of Terms are agreed.

ENTRY

Upon conclusion of legal missives.

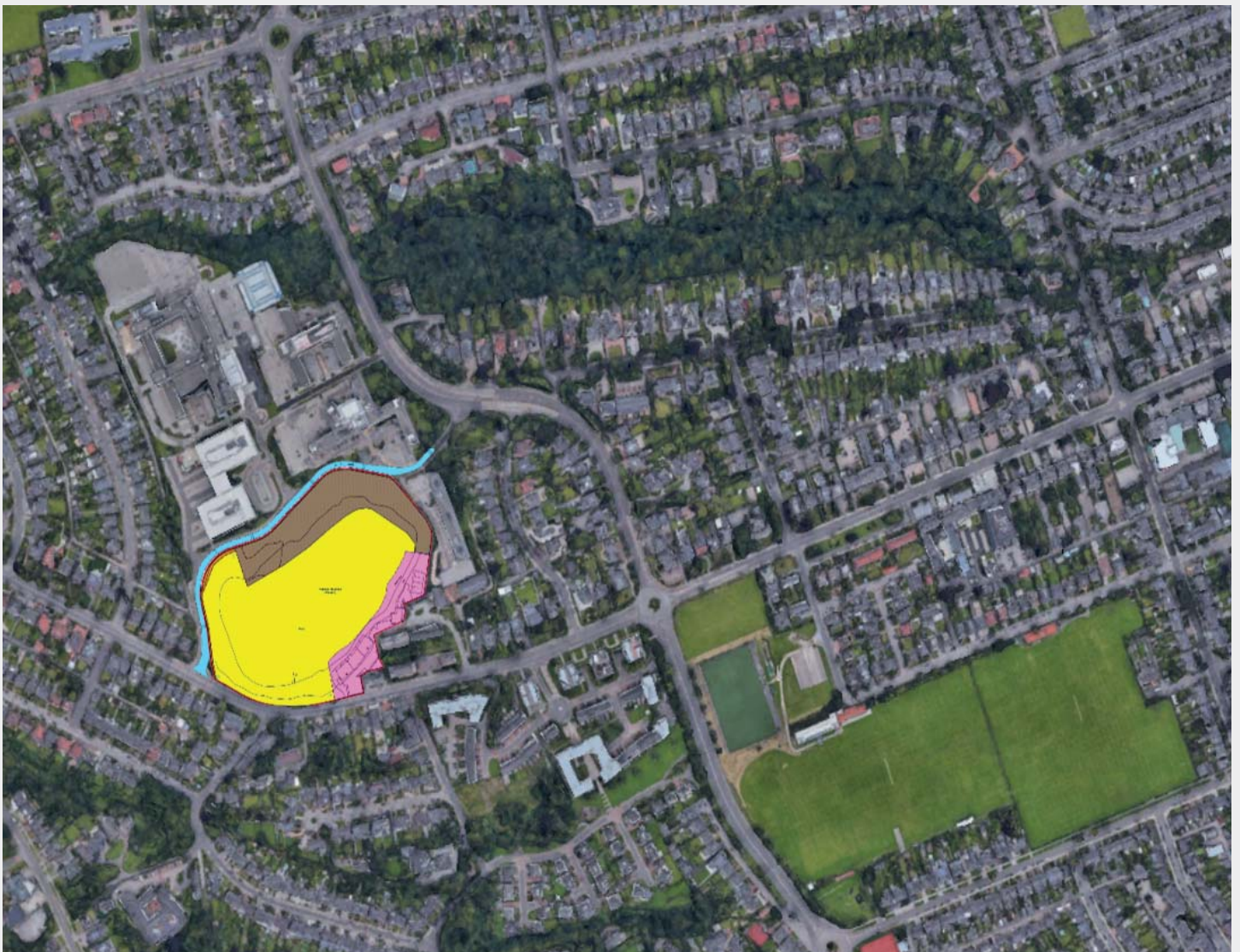




IMAGE SUPPLIED BY CABRO AVIATION LTD

VIEWING & OFFERS

All offers should be submitted in writing to the sole agent.



GRAEME NISBET

t. 01224 597532

e. graeme.nisbet@fgburnett.co.uk

LISA COWIE

t. 01224 597536

e. lisa.cowie@fgburnett.co.uk

FGBURNETT.CO.UK

Whilst every care has been taken in the preparation of these particulars and they are believed to be correct, they are not warranted and should not be taken to form part of any contract. Goad Digital Plans are for identification only and not to be scaled as a working drawing and are based upon Ordnance Survey Map with the permission of The Controller of Her Majesty's Stationery Office. © Crown Copyright PU 100017316. No part of this plan may be entered into an electronic retrieval system without prior consent of the publisher. Under current Money Laundering Regulations, we are obliged to carry out financial and identity due diligence on all purchasers and on tenants where rents are above a certain level. Where this applies, a request for information will be made at the appropriate time.