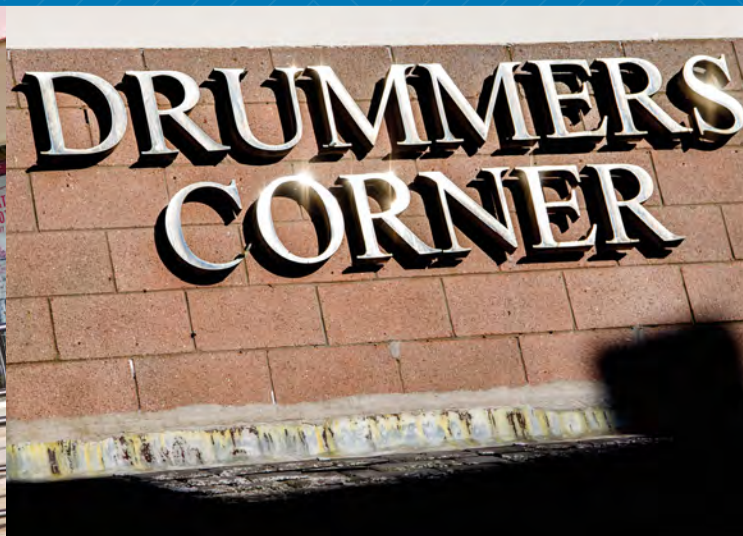




## DRUMMER'S CORNER SHOPPING CENTRE PETERHEAD

- RETAIL OPPORTUNITIES AVAILABLE
- PRIME TOWN CENTRE LOCATION





# DRUMMER'S CORNER

## SHOPPING CENTRE PETERHEAD

### LOCAL STATISTICS

▶ **5 screen cinema**



ARC CINEMA NOW TRADING IMMEDIATELY ADJACENT TO DRUMMERS CORNER

▶ **£51 million**



PETERHEAD PORT DEVELOPMENT OF A LARGER FISH MARKET AND DEEPENING OF WATER. INCREASE IN INDUSTRIAL AND COMMERCIAL SPACE

▶ **£1.7 billion**

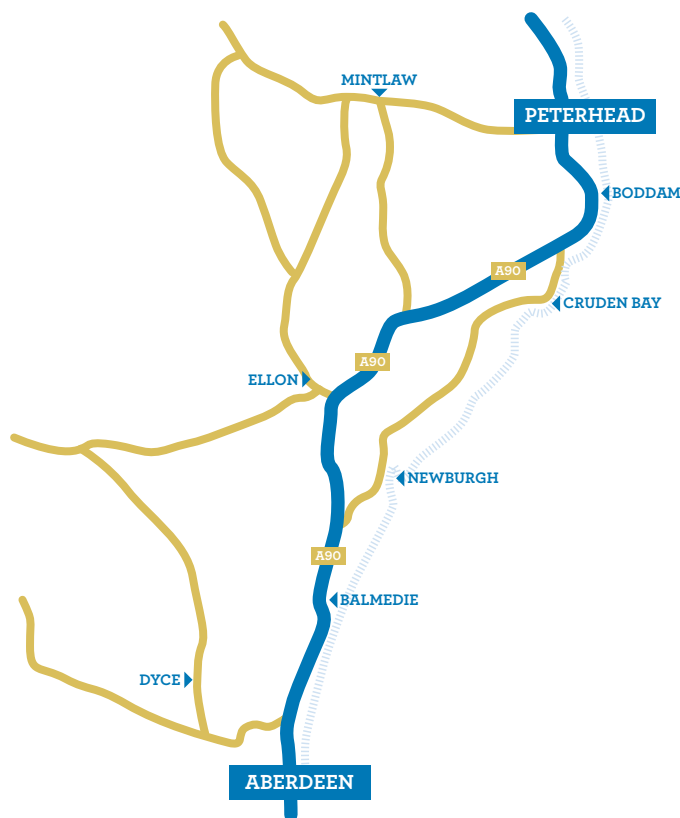


WORLD'S FIRST FLOATING OFFSHORE WINDFARM DEVELOPMENT NEAR PETERHEAD

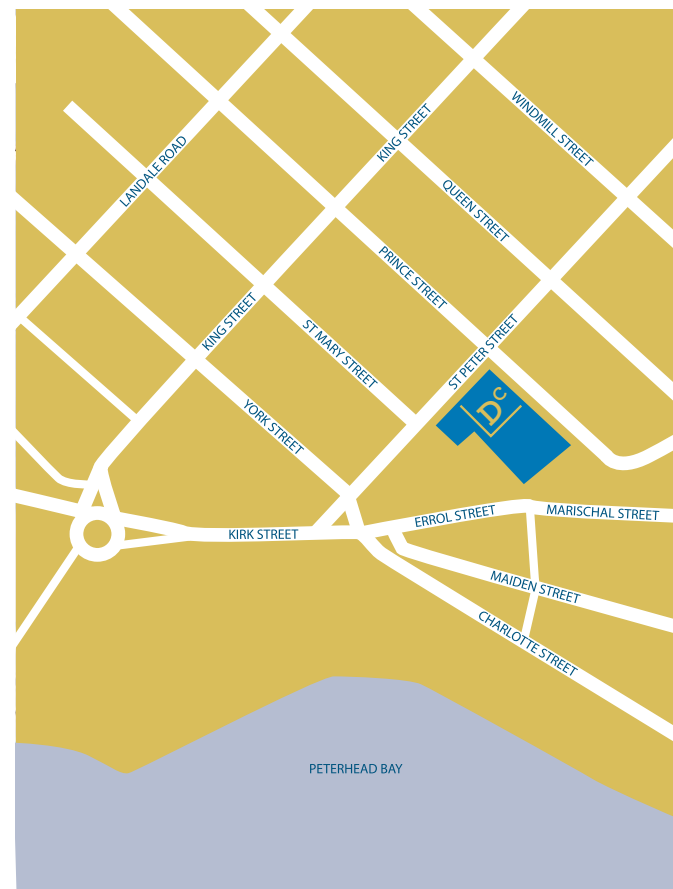
▶ **24,000**



PETERHEAD'S APPROXIMATE POPULATION



### LOCAL AREA



## RETAIL OPPORTUNITIES

### UNITS 3 & 4

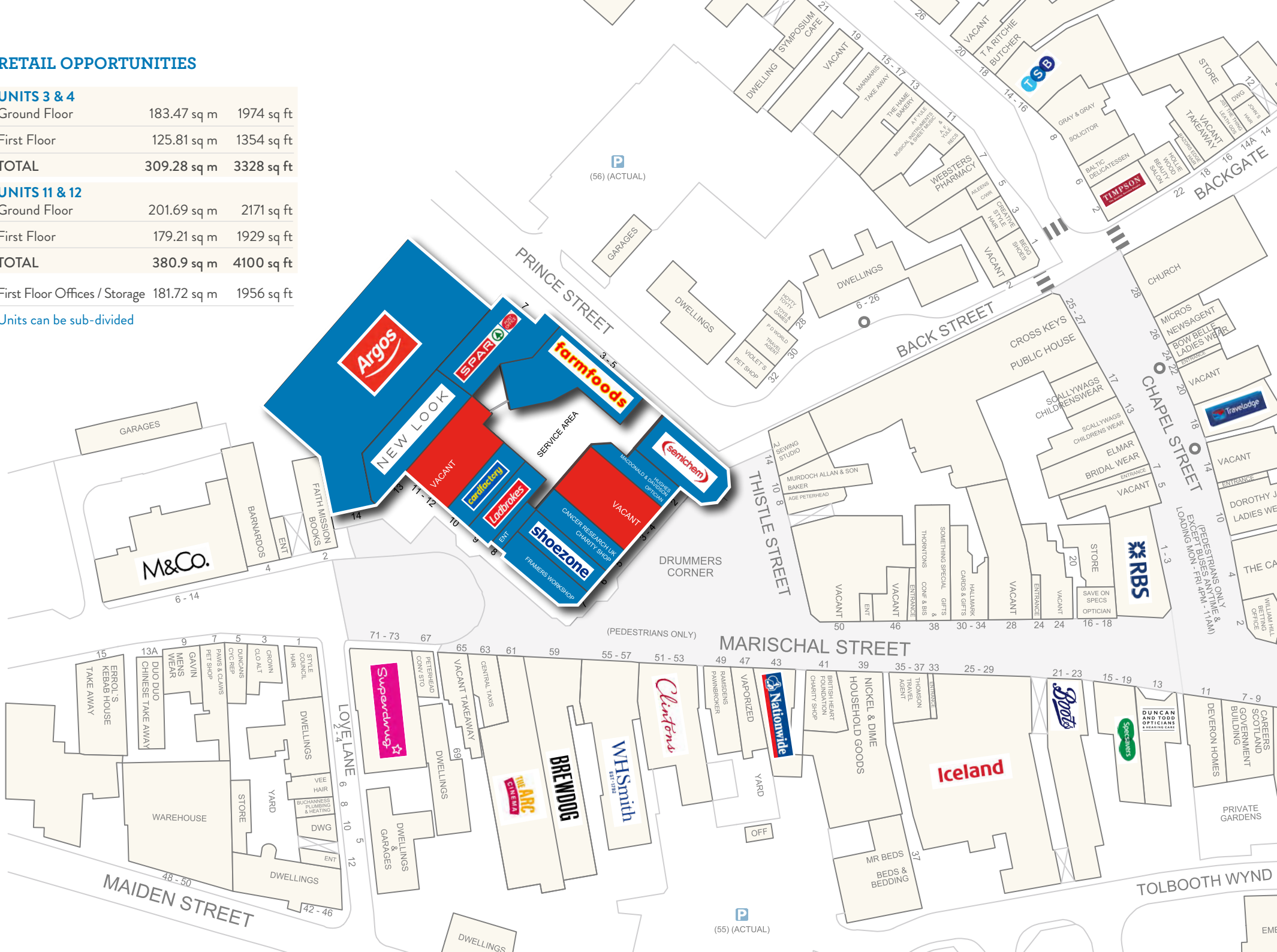
Ground Floor	183.47 sq m	1974 sq ft
First Floor	125.81 sq m	1354 sq ft
<b>TOTAL</b>	<b>309.28 sq m</b>	<b>3328 sq ft</b>

### UNITS 11 & 12

Ground Floor	201.69 sq m	2171 sq ft
First Floor	179.21 sq m	1929 sq ft
<b>TOTAL</b>	<b>380.9 sq m</b>	<b>4100 sq ft</b>

First Floor Offices / Storage	181.72 sq m	1956 sq ft
-------------------------------	-------------	------------

Units can be sub-divided





## DRUMMER'S CORNER

SHOPPING CENTRE PETERHEAD

Contact the letting agents to discuss asset management opportunities at Drummer's Corner Shopping Centre.

**RICHARD NOBLE**  
t: 01224 597528  
e: richard.noble@fgburnett.co.uk



**FG Burnett**

Tel: 01224 572661  
www.fgburnett.co.uk

DISCLAIMER: Whilst every care has been taken in the preparation of these particulars and they are believed to be correct, they are not warranted and should not be taken to form part of any contract. Any purchaser or lessee should satisfy themselves as to the correctness of each of the statements contained in these particulars. The owner of the property does not make or give and neither the agents nor any person in their employment has any authority to make or give any representation or warranty in relation to the property described in these particulars.