



3  2  1 

Waverley Road, Reading

BELVOIR!

£500,000



Key Features

- > Three Bedroom Period Semi Detached Home
 - > Freehold
- > Council Tax Band - D
 - > EPC Rating - D
- > No Onward Chain
- > Large Rear Garden

Belvoir are delighted to bring to the market this magnificent period home brimming with character appeal and offered for sale with No-Onward chain. The substantial accommodation, to the ground floor comprises of a grand entrance hall, a large lounge/dining room, breakfast room and a kitchen. The split-level landing leads to three bedrooms the bathroom and separate wc. Outside to the rear the property enjoys a large private garden with a covered side-way.

This delightful home is conveniently situated with easy access to local amenities, including shops, schools, and transport links, making it a highly desirable location.



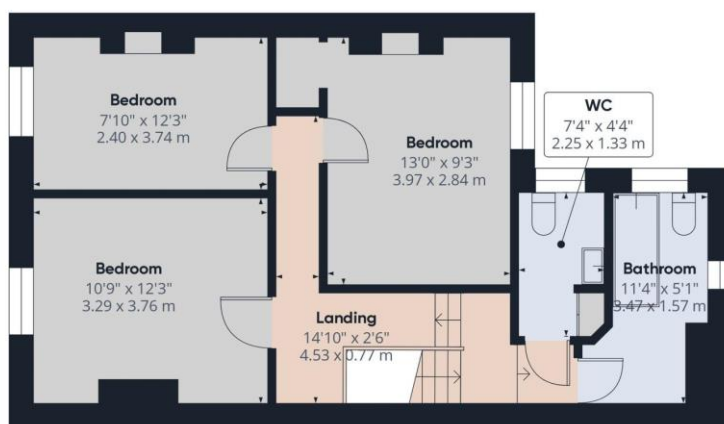
Please note that all buyers attend property viewings at their own risk and must assess any hazards themselves.

We can refer you on to The Mortgage Advise Bureau for help with finance. We may receive a fee of £250.00 if you take out a mortgage through them. If you require a solicitor to handle your purchase we can refer you onto Setfords Solicitors. We may receive a fee of £250.00 if you use their services.

Please be advised that a fee of £80 including VAT will be charged to complete the necessary anti-money laundering and identity verification checks for prospective clients wishing to purchase through ourselves. This fee is non-refundable and is required to ensure compliance with legal obligations and regulatory standards



Floor 0



Floor 1

BELVOIR!
Property Services

Approximate total area*

1197.6 ft²
111.26 m²

(1) Excluding balconies and terraces

While every attempt has been made to ensure accuracy, all measurements are approximate, not to scale. This floor plan is for illustrative purposes only.

Calculations are based on RICS IPMS 3C standard.

GIRAFFE 360



Contact us today to arrange a viewing...

BELVOIR!

www.belvoir.co.uk

01189 420777