



naomi j ryan
estate agents



Mid Terrace



Bedrooms: 3



Bathrooms: 1



Receptions: 2



Gas Central Heating



On Street Permit
Parking



Enclosed Rear Garden



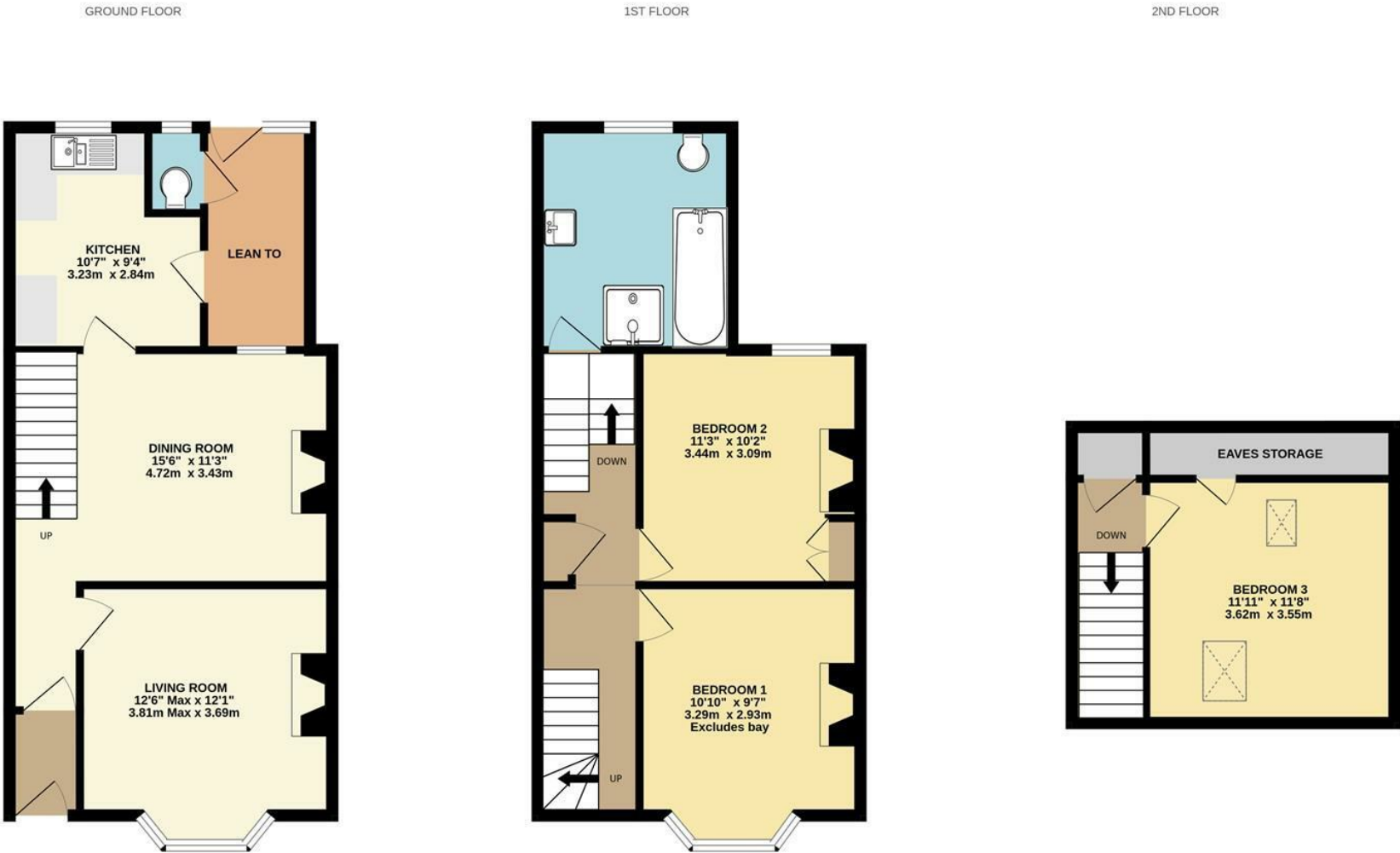
Council Tax Band: C

Guide: £280,000 - £290,000
Freehold

7 Rosebery Road,

Exeter, EX4 6LT

www.naomijryan.co.uk



Whilst every attempt has been made to ensure the accuracy of the floorplan contained here, measurements of doors, windows, rooms and any other items are approximate and no responsibility is taken for any error, omission or mis-statement. This plan is for illustrative purposes only and should be used as such by any prospective purchaser. The services, systems and appliances shown have not been tested and no guarantee as to their operability or efficiency can be given.
Made with Metropix ©2025



SUMMARY

GUIDE PRICE £280,000 - £290,000: A spacious mid-terrace house with three double bedrooms located within the highly convenient area of Mount Pleasant. Being sold with no onward chain, this bay-fronted house offers excellent access to the City Centre, local amenities such as Mount Pleasant Health Centre, Abbots Park, and well-regarded schools. St James Train Station is also within easy reach.

The property offers excellent potential for a prospective buyer to modernise. The accommodation comprises entrance porch, hallway, living room with bay window, separate dining room, kitchen, useful lean-to with access to the courtyard garden, three double bedrooms and a spacious first-floor bathroom with separate shower.

Outside is an enclosed courtyard garden with timber decked seating area and decorative slate chippings.

Internal viewing is highly recommended.

MATERIAL INFORMATION

Construction notes: Awaiting information.

Utilities: Awaiting information.

Broadband and Mobile Coverage: For an indication of specific speeds and supply or coverage in the area, we recommend checking with Ofcom by visiting their web site. <https://checker.ofcom.org.uk>

AGENTS NOTE

The property is being sold with no onward chain.

VIEWING ARRANGEMENTS

Strictly by appointment with Naomi J Ryan Estate Agents.

REFERRAL FEE DISCLOSURE

We recommend sellers and/or potential buyers use the services of The Mortgage Quarter. Should you decide to use the services of The Mortgage Quarter you should know that we would expect to receive a referral fee of £200 from them for recommending you to them. You are not under any obligation to use the services and can seek alternative providers of these services. Further information is available on our web site.



