



Alkerton Terrace, Eastington GL10 3AU
£398,500



Alkerton Terrace, Eastington GL10 3AU

• Semi-detached house • Three bedrooms • Sun room • Well-proportioned accommodation throughout • Enclosed rear garden with summer house • Driveway parking for three vehicles • Walking distance to local amenities • Freehold • Council tax band C (£2,002.44) • EPC rating D61

£398,500



Regent House, 1 Bath Road, Stonehouse, GL10 2JD

01453 827640

stonehouse@naylorpowell.com

www.naylorpowell.com

Porch

uPVC door to porch and two double-glazed windows either side. Access to entrance hall.

Entrance Hall

uPVC door to entrance hall and uPVC double-glazed window to front elevation. Access to living room, bathroom, dining room and stairs rising to the first floor.

Living Room

Two uPVC double-glazed windows to front elevation. Two radiators.

Kitchen

uPVC double-glazed window to rear elevation and access to sun room. Range of wall and base units with appliances to include one and a half bowl sink with mixer tap and drainer, four ring gas hob, eye-level oven and integrated fridge, freezer, dishwasher and microwave. Storage cupboard. Radiator.

Dining Room

uPVC double-glazed window to side elevation. Access to kitchen. Radiator.

Sun Room

uPVC double-glazed French doors to garden and uPVC double-glazed windows surrounding. Two radiators.

Cloakroom

Two uPVC double-glazed windows to rear elevation. Low-level WC and wash hand basin. Radiator.

Bedroom One

uPVC double-glazed window to rear elevation. Built-in wardrobe. Two radiators.

Bedroom Two

uPVC double-glazed window to front elevation. Radiator.

Bedroom Three

uPVC double-glazed window to front elevation. Radiator.

Bathroom

uPVC double-glazed window to front elevation. Low-level WC, wash hand basin and corner bath with shower over. Radiator.

Outside

The property boasts driveway parking for three vehicles and a bike shed. The rear garden is fully enclosed with side access. It is mostly laid to lawn with a patio space, ideal for alfresco dining. There is wooden raised beds and a pergola. The garden benefits from a path that runs up to the summer house, the summer house is insulated with power and light, as well as additional storage to the side and rear.

Location

The property is situated in the popular village of Eastington. It is positioned West of Stonehouse town and is extremely convenient for Junction 13 of the M5 motorway, the A38 and the A419 roads. There are useful facilities within Eastington such as a Community Centre, Village Hall, Co-op, post office, The Old Badger pub and The Lazy Goose café. The property is located within the catchment area for Eastington Primary School with further schools just a short drive away. For further amenities and facilities, Stonehouse town is close by and provides a train Station which has a mainline to London Paddington.

Material Information

Tenure: Freehold.

Council tax band: C.

Local authority and rates: Stroud District Council - £2,002.44 (2025/26).

Electricity supply: mains.

Water supply: mains.

Sewerage: mains.

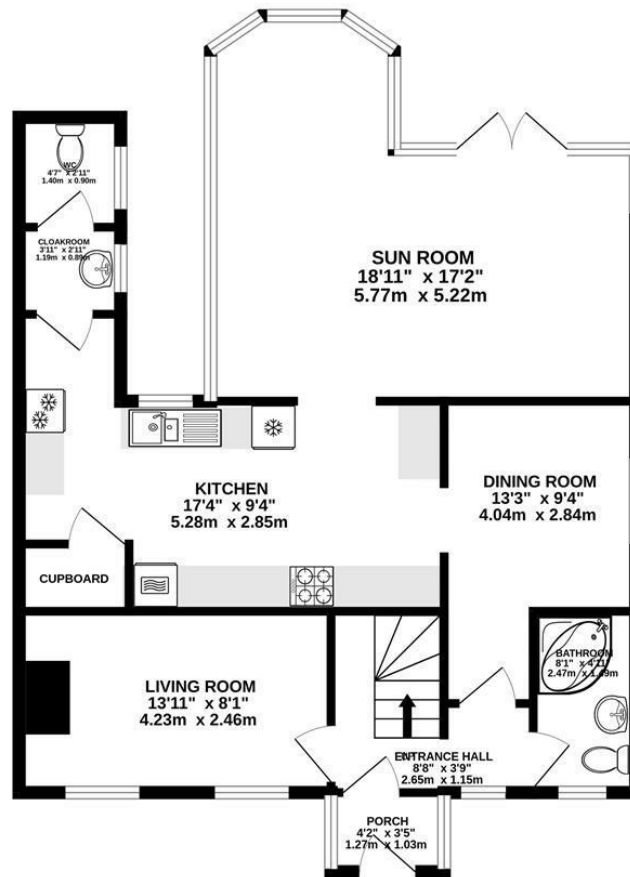
Heating: gas central heating.

Broadband speed: 5 Mbps (basic), 80 Mbps (superfast) and 10,000 Mbps (ultrafast).

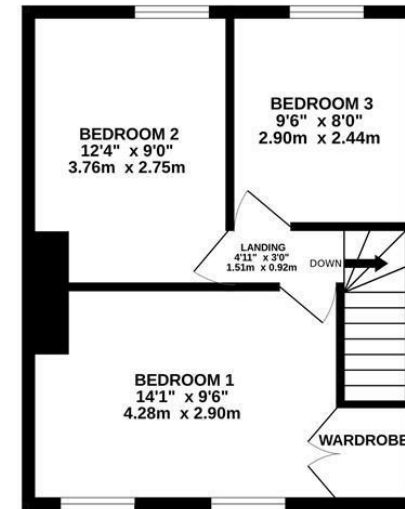
Mobile phone coverage: EE (Limited), O2 (Limited) and Vodafone (Limited).



GROUND FLOOR
805 sq.ft. (74.7 sq.m.) approx.



1ST FLOOR
366 sq.ft. (34.0 sq.m.) approx.



TOTAL FLOOR AREA: 1171 sq.ft. (108.8 sq.m.) approx.

Whilst every attempt has been made to ensure the accuracy of the floorplan contained here, measurements of doors, windows, rooms and any other items are approximate and no responsibility is taken for any error, omission or mis-statement. This plan is for illustrative purposes only and should be used as such by any prospective purchaser. The services, systems and appliances shown have not been tested and no guarantee as to their operability or efficiency can be given.
Made with Metropix ©2025

Disclaimer: These particulars do not form part of any contract and no responsibility is accepted for any errors or omissions in any statement made, whether verbally or written for or on behalf of Naylor Powell.

Floorplans have been prepared for identification purposes only, they are not to scale and no guarantee can be given as to their accuracy.

Prospective purchasers please be aware none of the appliances, boiler, heaters etc. which may have been mentioned in these particulars have been tested and no guarantee can be given that they are in working order. Prospective purchasers should arrange for such items to be tested at their own expense.

