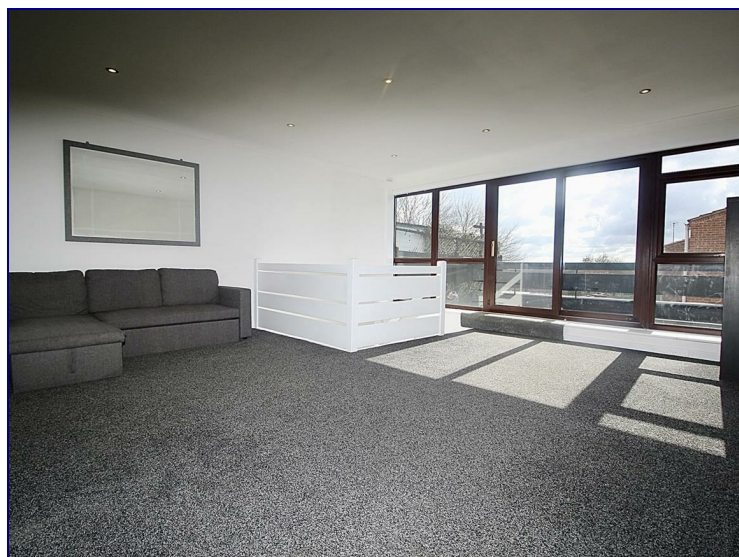
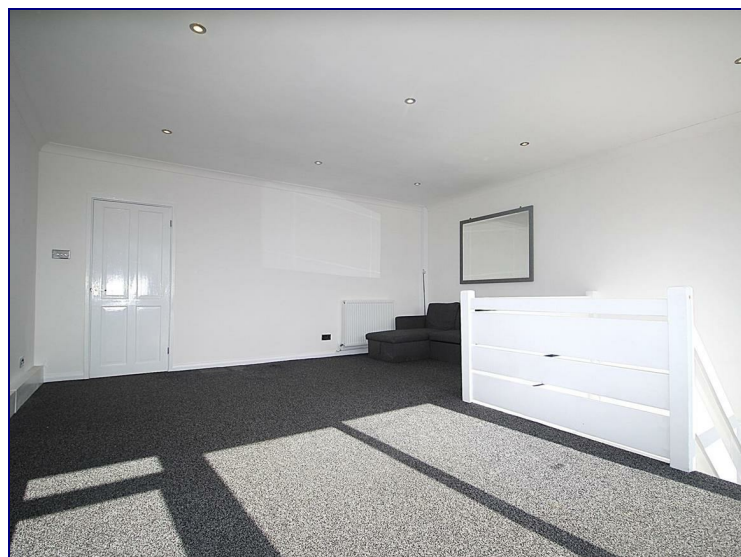


Chaucer Way, Hoddesdon, EN11 9QR



£1,500

Spacious Two Bedroom Split Level Maisonette, Available 5th February.

Occupants will benefit from two balconies, one of which is private and one is shared. The entrance floor offers a spacious lounge leading to a private roof garden and a fully fitted kitchen with appliances. Leading downstairs to a double bedroom with access to the shared balcony and fitted wardrobes, one good size second bedroom, storage and a newly fitted three piece bathroom suite. There is also an entry phone system for security, ample parking around the property and the property has been recently refurbished.

The property is available unfurnished.



