



Hilton &
Horsfall

BB10 3NU

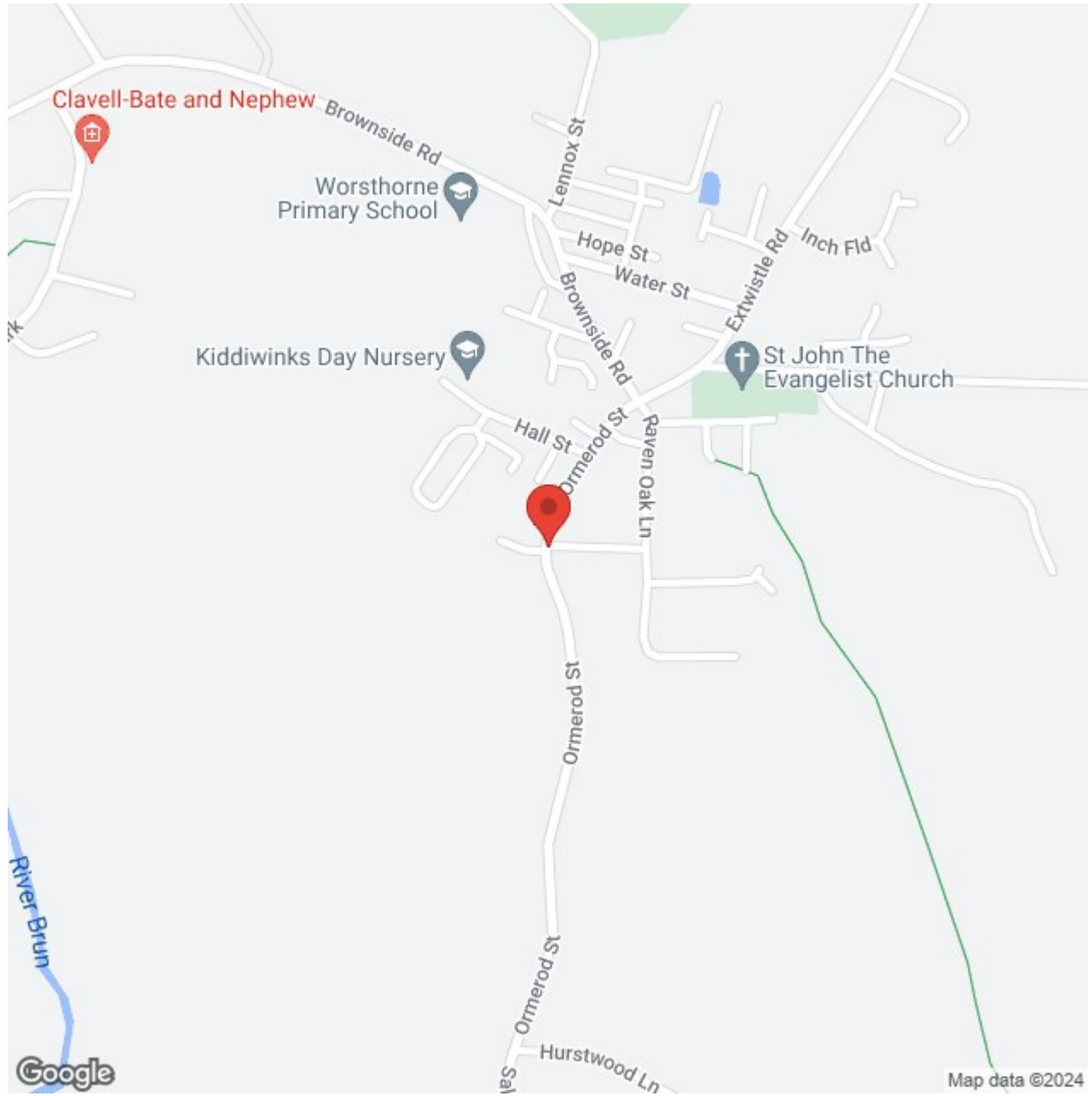
Greenwoods Barn, Ormerod Street, Worsthorne

Offers Over £385,000

- Fully Renovated • Barn Conversion • Family Sized Home • Four Bedrooms • Two Reception Rooms • Rear Garden • No Chain

Greenwoods Barn is a stunning four-bedroom barn conversion in the charming village of Worsthorne. Fully renovated to an exceptional standard, this property seamlessly blends traditional character with contemporary luxury. The exterior features a striking stone façade, while the beautifully landscaped rear garden offers a perfect mix of relaxation and entertainment spaces. Inside, you'll find spacious, thoughtfully designed rooms with original features like exposed stone walls and wooden beams, complemented by modern amenities. This exquisite home offers a unique opportunity to own a piece of Lancashire's history with all the conveniences of modern living.







BB10 3NU

Lancashire

Greenwoods Barn is a stunning four-bedroom barn conversion in the charming village of Worsthorne. Fully renovated to an exceptional standard, this property seamlessly blends traditional character with contemporary luxury. The exterior features a striking stone façade, while the beautifully landscaped rear garden offers a perfect mix of relaxation and entertainment spaces. Inside, you'll find spacious, thoughtfully designed rooms with original features like exposed stone walls and wooden beams, complemented by modern amenities. This exquisite home offers a unique opportunity to own a piece of Lancashire's history with all the conveniences of modern living. No onwards chain.

GROUND FLOOR

ENTRANCE

HALLWAY

LIVING ROOM 22'7" x 13'3" (6.90m x 4.06m)

The living room exudes rustic elegance, featuring exposed stone walls, wooden beams, and a charming fireplace with a cast iron stove. The room is enhanced by wainscoting on the walls and convenient built-in storage units. The herringbone flooring adds a touch of modernity, while the staircase to the first floor seamlessly integrates into the design. This versatile space is ideal for family gatherings and entertaining, making it the cozy heart of the home.

BREAKFAST KITCHEN 22'3" x 8'8" (6.80m x 2.65m)

Seamlessly blending style and functionality, this state-of-the-art space features high-end appliances, sleek cabinetry, and a spacious peninsular breakfast bar with comfortable seating, perfect for casual dining and social gatherings. The design incorporates elegant finishes and ample storage, making it as practical as it is beautiful. Large windows and modern lighting fixtures ensure the kitchen is bright and inviting, creating an ideal environment for both everyday cooking and special occasions.

SITTING ROOM 11'8" x 12'0" (3.58m x 3.66m)

Adjacent to the kitchen in an open-plan layout, the sitting room offers a cozy and stylish retreat. This inviting space benefits from natural light pouring in through the bi-folding doors, which lead directly to the landscaped rear garden. Exposed stone walls add a touch of rustic charm, seamlessly integrating with the modern amenities to create a harmonious and comfortable living area. This versatile room can also be utilized as a dining room if required, providing a flexible space to suit various lifestyle needs.

FIRST FLOOR / LANDING

BEDROOM ONE 17'7" x 12'0" (5.38m x 3.66m)

The master bedroom is a spacious and serene retreat featuring exposed wooden beams, elegant wainscoting, and a large skylight that bathes the room in natural light. The room's high ceiling enhances its airy feel, while a quaint window adds charm. This master suite also benefits from access to an ensuite shower room, offering convenience and privacy.

EN-SUITE 6'6" x 3'10" (2.00m x 1.18m)

The ensuite shower room features a glass-enclosed shower, a modern pedestal sink, and a white tiled backsplash with contrasting dark walls. Rustic wooden shelves and a matching framed mirror add a touch of warmth and character, providing practical storage solutions. The compact yet efficient design ensures a comfort and convenience.

BEDROOM TWO 15'2" x 8'9" (4.64m x 2.69m)

The room features a large skylight that fills the space with natural light, highlighting the exposed wooden beam that adds a touch of rustic charm. The neutral color palette and plush carpeting create a warm and comfortable atmosphere. Also having ample space for wardrobe and drawer storage.

BEDROOM THREE 11'5" x 10'2" (3.49m x 3.10m)

This bright and airy bedroom features charming exposed wooden beams and a large skylight that floods the space with natural light. The room offers ample space for both sleeping and working, making it a versatile retreat. A quaint low window adds character, while the neutral carpeting provides warmth and comfort. This room is perfect for use as a bedroom, home office, or study, offering flexibility to suit various needs.

BEDROOM FOUR 12'8" x 7'11" (3.88m x 2.42m)

This cozy bedroom is bright and inviting, featuring a large skylight that allows natural light to flood the space. Exposed wooden beams add rustic charm. The room is versatile and can be used as a child's bedroom, guest room, or home office, offering flexibility to suit your needs.

BATHROOM 8'7" x 6'11" (2.64m x 2.11m)

A modern and spacious room featuring elegant tiling and contemporary fixtures. It includes a panelled bath with a glass-enclosed shower. The pedestal sink and toilet are complemented by a large mirrored cabinet, providing ample storage. Neutral tones and stylish mosaic tile accents create a calming and sophisticated atmosphere, making this bathroom a perfect blend of functionality and aesthetics.

360 DEGREE VIRTUAL TOUR

<https://bit.ly/greenwoods-barn>

EXTERNALLY

At the rear, the property features an impressive, well-designed garden that provides a perfect balance of relaxation and entertainment spaces. The garden is landscaped with a mix of lush greenery, and stylish paved areas, ideal for outdoor dining and social gatherings. A comfortable seating area with modern outdoor furniture invites you to unwind and enjoy the tranquil surroundings. Additionally, the garden is enclosed by a combination of wooden fencing and traditional stone walls, ensuring privacy and a touch of rustic elegance.

PUBLISHING

You may download, store and use the material for your own personal use and research. You may not republish, retransmit, redistribute or otherwise make the material available to any party or make the same available on any website, online service or bulletin board of your own or of any other party or make the same available in hard copy or in any other media without the website owner's express prior written consent. The website owner's copyright must remain on all reproductions of material taken from this website. www.hilton-horsfall.co.uk

PROPERTY DETAIL

Unless stated otherwise, these details may be in a draft format subject to approval by the property's vendors. Your attention is drawn to the fact that we have been unable to confirm whether certain items included with this property are in full working order. Any prospective purchaser must satisfy themselves as to the condition of any particular item and no employee of Hilton & Horsfall has the authority to make any guarantees in any regard. The dimensions stated have been measured electronically and as such may have a margin of error, nor should they be relied upon for the purchase or placement of furnishings, floor coverings etc. Details provided within these property particulars are subject to potential errors, but have been approved by the vendor(s) and in any event, errors and omissions are excepted. These property details do not in any way, constitute any part of an offer or contract, nor should they be relied upon solely or as a statement of fact. In the event of any structural changes or developments to the property, any prospective purchaser should satisfy themselves that all appropriate approvals from Planning, Building Control etc, have been obtained and complied with.



Hilton &
Horsfall

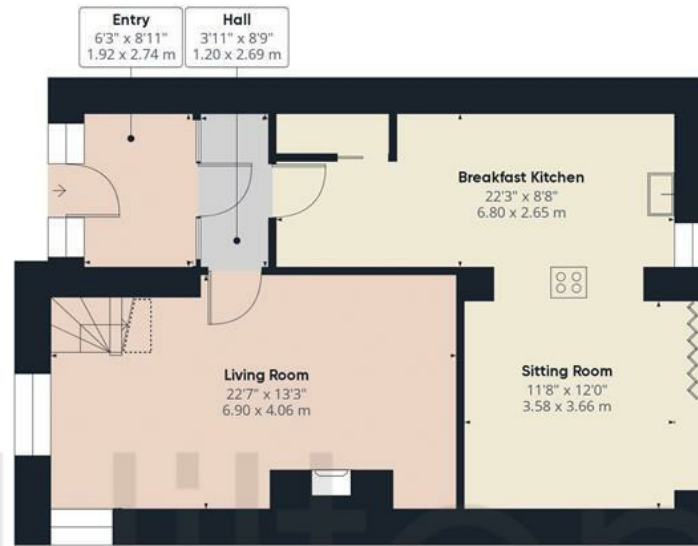
BB10 3NU

OUTSIDE

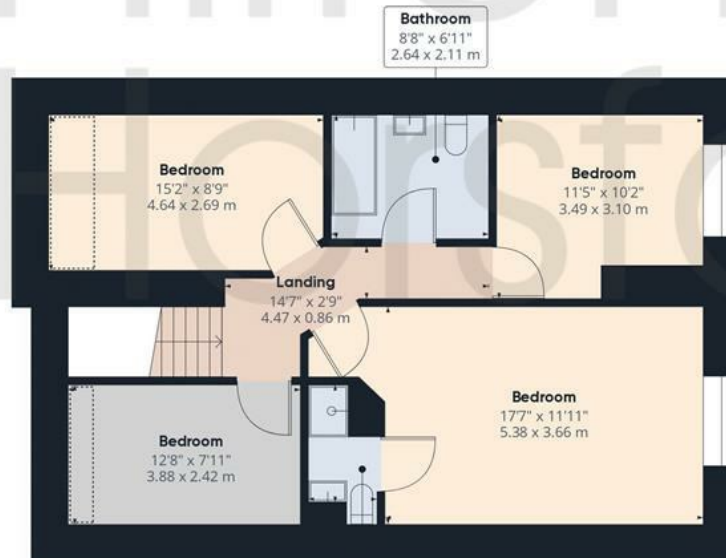
At the rear, the property features an impressive, well-designed garden that provides a perfect balance of relaxation and entertainment spaces. The garden is landscaped with a mix of lush greenery, and stylish paved areas, ideal for outdoor dining and social gatherings. A comfortable seating area with modern outdoor furniture invites you to unwind and enjoy the tranquil surroundings.

Additionally, the garden is enclosed by a combination of wooden fencing and traditional stone walls, ensuring privacy and a touch of rustic elegance.





Ground Floor



Floor 1

Approximate total area⁽¹⁾

1450.53 ft²


134.76 m²

Reduced headroom

40.64 ft²

3.78 m²

(1) Excluding balconies and terraces

 Reduced headroom
(below 1.5m/4.92ft)

While every attempt has been made to ensure accuracy, all measurements are approximate, not to scale. This floor plan is for illustrative purposes only.



Hilton &
Horsfall



Hilton & Horsfall

55 Burn Road
Bury
Lancashire
BL9 6BX

ESTATE AGENT
IN COLNE & NELSON
[w. hilton-horsfall.co.uk](http://w.hilton-horsfall.co.uk)
t. 01282 560024

20 Wellgate
Clitheroe
Lancashire
BB7 2DP

[w. hilton-horsfall.co.uk](http://w.hilton-horsfall.co.uk)
t. [01200 435667](tel:01200435667)