

# Coppy House Farm, Brogden Lane, Barnoldswick

OFFERS IN THE REGION OF £719,950











# Brogden Lane, Barnoldswick

OFFERS IN THE REGION OF £719,950

- Detached Farmhouse
- Approx 1.79 acres
- Four Bedrooms
- Panoramic Views
- Idyllic Location
- Detached Garage

'Coppo house farm'. Located on Brogden Lane, Barnoldswick this generously spaced detached dwelling offers a unique blend of comfort and grandeur. Situated across two floors this property furnishes four well proportioned bedrooms, a bespoke wet room and stunning four piece bathroom suite to the first floor / landing. On the ground floor there is a family sized living room, two additional sitting rooms, dining room, useful utility room, ground floor w.c and a beautifully presented kitchen. Externally to the front elevation is an enclosed garden with a meticulously maintained laid lawn with mature trees, flowerbeds and a potting area. To the rear elevation is a flagged patio area with space for garden furniture, storage shed, summerhouse, outside water tap and lighting. Having the added benefit of a detached garage with a paved driveway providing ample space for off road parking. Surrounded by stunning open aspect views towards the Yorkshire three peaks and Pendle Hill, this is the perfect spot for during the Spring / Summer months. Local amenities, transport links and good schools are a short drive away. Early viewing is highly advised to avoid disappointment.













# Brogden Lane, Barnoldswick



OFFERS IN THE REGION OF £719,950

'Coppo house farm'. Located on Brogden Lane, Barnoldswick this generously spaced detached dwelling offers a unique blend of comfort and grandeur. Situated across two floors this property furnishes four well proportioned bedrooms, a bespoke wet room and stunning four piece bathroom suite to the first floor / landing. On the ground floor there is a family sized living room, two additional sitting rooms, dining room, useful utility room, ground floor w.c and a beautifully presented kitchen. Externally to the front elevation is an enclosed garden with a meticulously maintained laid lawn with mature trees, flowerbeds and a potting area. To the rear elevation is a flagged patio area with space for garden furniture, storage shed, summerhouse, outside water tap and lighting. Having the added benefit of a detached garage with a paved driveway providing ample space for off road parking. Surrounded by stunning open aspect views towards the Yorkshire three peaks and Pendle Hill, this is the perfect spot for during the Spring / Summer months. Local amenities, transport links and good schools are a short drive away. Early viewing is highly advised to avoid disappointment.

## GROUND FLOOR

On the ground floor you will find:

### SITTING ROOM 3.86m x 4.08m (12'7" x 13'4" )

A cosy sitting room having space for settees, exposed wood ceiling beams, feature fireplace with log burning stove set within, double doors leading through to the additional sitting room and wood frame windows to the side and rear elevation.

### SITTING ROOM 3.39m x 4.06m (11'1" x 13'3" )

An additional sitting room with exposed wood ceiling beams, 2x wall lights, double doors leading through to dining room, composite double glazed window to the side elevation.

### LIVING ROOM 6.06m x 4.07m (19'10" x 13'4" )

A family sized living room having ample space for settees, television point, 1x central heating radiator, composite double glazed patio doors to the side elevation and composite double glazed windows to the side and rear elevation with stone sills.

### DINING ROOM 4.30m x 4.05m (14'1" x 13'3" )

Perfect for hosting this dining room has space for table and chairs, serving hatch, exposed wood ceiling beams, 4x wall lights, double doors leading to the living room and composite double glazed windows to the front elevation.

### KITCHEN 3.79m x 4.02m (12'5" x 13'2" )

Offering a range of fitted wall and base units with contrasting worktops, tiled flooring, exposed wood ceiling beams, Stoves range cooker with chrome extractor hood above, Belfast sink with chrome mixer tap, exposed brick wall feature, Bosch dishwasher, serving hatch, stone staircase to the first floor / landing and composite windows to the front elevation with stunning panoramic views towards the countryside and Pendle Hill.

### UTILITY ROOM 5.69m x 2.02m (18'8" x 6'7" )

A useful utility room having tiled flooring, fitted wall and base units with contrasting worktops, inset sink with chrome mixer tap, space for an under counter fridge, plumbing for a washing machine, exposed wood ceiling beams, and composite double glazed window to the side and rear elevation.

## GROUND FLOOR W.C

A 2 piece suite comprising of: tiled flooring, push button w.c, pedestal sink with chrome mixer tap, tiled splash back, heated chrome towel rack and composite double glazed window to the front elevation with stone sills.

## FIRST FLOOR / LANDING

### BEDROOM ONE 3.86m x 3.55m (12'7" x 11'7" )

A bedroom of double proportions with fitted wardrobes, exposed wood ceiling beams, 1x central heating radiator and composite double glazed windows to the rear elevation with stone sills.

### BEDROOM TWO 3.97m x 4.03m (13'0" x 13'2" )

Another bedroom of double proportions with space for wardrobes and drawers, 1x central heating radiator and composite double glazed window to the rear elevation

### BEDROOM THREE 3.09m x 3.10m (10'1" x 10'2" )

Another bedroom of double proportions with fitted wardrobes, 1x central heating radiator and a composite double glazed window with views towards Pendle Hill.













Hilton & Horsfall



Hilton & Horsfall

#### GYM ROOM / BEDROOM FOUR 4.02m x 3.08m (13'2" x 10'1")

Currently used as gym room having exposed wood ceiling beams, central heating radiator and composite double glazed window to the front elevation with beautiful perspective views towards the countryside

#### WET ROOM

Absolutely modern bespoke three piece wet room comprising of walk in shower cubicle with LED lighting and wall sink vanity unit with chrome mixer tap, LED touch sensor light, mirror, heated chrome towel rack, recessed LED spotlights, push button WC, extractor fan and composite double glazed window to the side elevation with perspective views towards the countryside

#### BATHROOM

A stunning four piece bathroom suite comprising of wood effect floating walk in shower cubicle with rainfall shower head, freestanding tubular bath tub with chrome mixer tap and shower attachment over recessed LED spotlights, heated chrome towel rack, push button WC, sink vanity unit with chrome mixer tap, touch sensor LED light, mirror, cassette radiator, exposed wood ceiling beams and composite double glazed window to the front elevation with stone tiles

#### EXTERNALLY

Externally to the front elevation is an enclosed garden with a well maintained lawn with mature trees, flower beds and potting area. To the rear elevation is a large paved area with space for garden furniture, storage shed, summer house, outside water tap and lighting. Surrounded by stunning perspective views towards the countryside and Pendle Hill in the perfect spot for during the Spring/Summer months

#### GARAGE 6.36m x 2.93m (20'10" x 9'7")

Ideal for storage and office parking purposes

#### PRECISE LOCATION

<https://www.zillow.com/property/123456789>

#### 360 DEGREE VIRTUAL TOUR

<https://tours.zillow.com/property/123456789>

#### VIDEO LINK

[https://youtu.be/D8\\_Dcz74Tf8](https://youtu.be/D8_Dcz74Tf8)

#### PROPERTY DETAILS

#### PUBLISHING























Hilton &  
Horsfall



Approximate total area<sup>(1)</sup>

2252.25 ft<sup>2</sup>

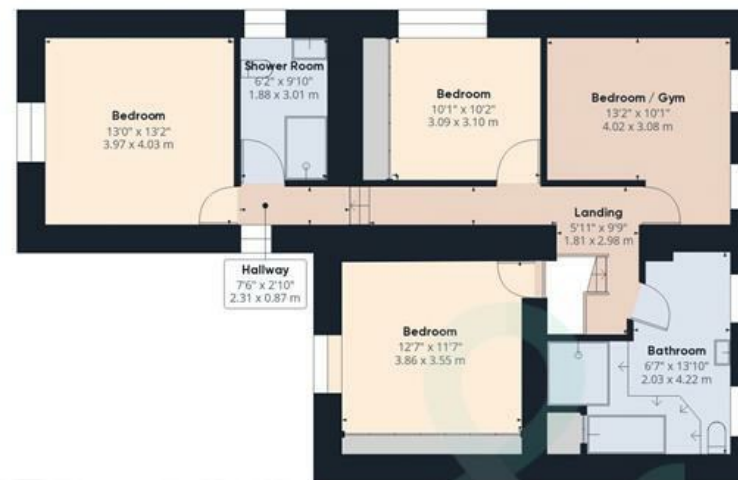
209.24 m<sup>2</sup>

(1) Excluding balconies and terraces

While every attempt has been made to ensure accuracy, all measurements are approximate, not to scale. This floor plan is for illustrative purposes only.



Ground Floor Building 1



Floor 1 Building 1



Ground Floor Building 2



#### RIBBLE VALLEY

20 WELLGATE,  
CLITHEROE, BB7 2DP  
01200 435 667

#### BURNLEY & PENDLE

75 GISBURN ROAD,  
BARROWFORD, BB9 6DX  
01282 560 024

Hilton & Horsfall  
PRESTIGE

#### PUBLISHING

You may download, store and use the material for your own personal use and research. You may not republish, retransmit, redistribute or otherwise make the material available to any party or make the same available on any website, online service or bulletin board of your own or of any other party or make the same available in hard copy or in any other media without the website owner's express prior written consent. The website owner's copyright must remain on all reproductions of material taken from this website. [www.hilton-horsfall.co.uk](http://www.hilton-horsfall.co.uk)

#### PROPERTY DETAIL

Unless stated otherwise, these details may be in a draft format subject to approval by the property's vendors. Your attention is drawn to the fact that we have been unable to confirm whether certain items included with this property are in full working order. Any prospective purchaser must satisfy themselves as to the condition of any particular item and no employee of Hilton & Horsfall has the authority to make any guarantees in any regard. The dimensions stated have been measured electronically and as such may have a margin of error, nor should they be relied upon for the purchase or placement of furnishings, floor coverings etc. Details provided within these property particulars are subject to potential errors, but have been approved by the vendor(s) and in any event, errors and omissions are excepted. These property details do not in any way, constitute any part of an offer or contract, nor should they be relied upon solely or as a statement of fact. In the event of any structural changes or developments to the property, any prospective purchaser should satisfy themselves that all appropriate approvals from Planning, Building Control etc, have been obtained and complied with.

