



Maryland Close
Southampton



Property Description

This beautiful renovated 2-bedroom semi-detached bungalow is located in the sought-after area of Southampton. The property boasts a spacious lounge, with sliding doors that open directly to a large garden, perfect for outdoor relaxation or entertaining. The bungalow features two comfortable bedrooms, providing ample living space. There is a garage at the side of the property. With its functional layout, this bungalow is an ideal home for many.

Key Features

- Recently Renovated
- Spacious Lounge
- Large Garden
- Garage
- Two Bedrooms



Entrance Hall

Carpeted 'L' shape leading to all rooms - lights thermostat round corner on wall. Plug socket x1 storage cupboard.

Lounge

New carpet, 2x plug sockets, double glazed sliding patio doors to garden, radiator to front.

Kitchen

Double glazed window to front, wall base units, boiler to front right, sink and drainer, double oven and 5 hob stove. Hood over oven, partial tiled to walls. Wooden panels to side. Wooden floor: space for fridge freezer, washing machine and dishwasher.

Bedroom One

New carpet, double glazed window to rear, space for a double wardrobe, plug socket x1, radiator to front.

Bedroom Two

New carpet laid, double glazed window to front, radiator to rear, plug socket x1.

Bathroom

Wooden tiled floor, double glazed frosted glass to side aspect, 'P' shaped bath, WC, wash hand basin, storage underneath, partial tiled walls, shower over bath, glass shower screen, heated towel rail to side.

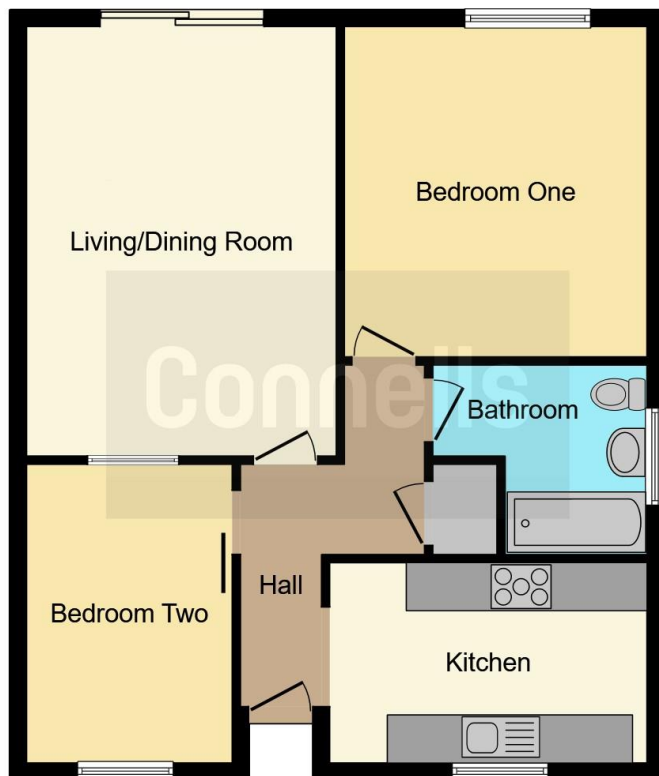
Front Garden

Laid to lawn to side, double driveway, to side leading to garage, small brick wall, with steps.

Rear Garden

Garage to side, purpose built shed to side rear, laid to lawn, stone path, stone area to side, brick wall to side.





This floor plan is for illustrative purposes only. It is not drawn to scale. Any measurements, floor areas (including any total floor area), openings and orientation are approximate. No details are guaranteed, they cannot be relied upon for any purpose and they do not form part of any agreement. No liability is taken for any error, omission or misstatement. A party must rely upon its own inspection(s). Powered by www.focalagent.com

To view this property please contact Connells on

T 02380 422080
E Bitterne@connells.co.uk

2 West End Road Bitterne
 SOUTHAMPTON SO18 6TG

EPC Rating: D

check out more properties at connells.co.uk



Tenure: Freehold



1. MONEY LAUNDERING REGULATIONS Intending purchasers will be asked to produce identification documentation at a later stage and we would ask for your co-operation in order that there will be no delay in agreeing the sale. 2. These particulars do not constitute part or all of an offer or contract. 3. The measurements indicated are supplied for guidance only and as such must be considered incorrect. Potential buyers are advised to recheck measurements before committing to any expense. 4. We have not tested any apparatus, equipment, fixtures, fittings or services and it is in the buyers interest to check the working condition of any appliances.

Connells Residential is registered in England and Wales under company number 1489613, Registered Office is Cumbria House, 16-20 Hockliffe Street, Leighton Buzzard, Bedfordshire, LU7 1GN. VAT Registration Number is 500 2481 05.

See all our properties at www.connells.co.uk | www.rightmove.co.uk | www.zoopla.co.uk

Property Ref: BTN107320 - 0003