



**Connells**

Ravenscroft Close  
Bursledon Southampton



# Ravenscroft Close Bursledon Southampton SO31 8FT

for sale offers in the region of  
**£255,000**



## Property Description

This mid-terrace house located in Bursledon, Southampton, features three bedrooms, offering ample space for a family or individuals seeking extra room. The property includes one reception room. The house has one bathroom, ensuring practical functionality for daily needs.

Outside, there is a front garden. At the rear, the property boasts a private garden, which is perfect for outdoor activities or relaxation. Additionally, there is a shed for extra storage.

This home provides a balance of indoor and outdoor living, making it a comfortable option for those seeking a peaceful residential setting in a desirable location.

## Key Features

- Three Bedrooms
- One Reception Room
- Private Rear Garden
- Front Garden
- Shed for Storage
- No Forward Chain



## Entrance Hall

Radiators, carpet

## Lounge

23' 8" Max x 12' 4" Max ( 7.21m Max x 3.76m Max )

Laid to carpet, double window to front and rear, fireplace, radiator.

## Kitchen

10' 1" Max x 7' 10" Max ( 3.07m Max x 2.39m Max )

Double glazed door and windows to rear, roll top work surfaces, laid to carpet, wall and base units, stainless steel sink and drainer, partial tiled walls

## Landing

Storage cupboard, boiler cupboard, carpet loft access

## Bedroom One

14' 5" Max into wardrobe x 9' 5" Max ( 4.39m Max into wardrobe x 2.87m Max )

Double glazed window to front, built in wardrobes to rear, laid to carpet, radiator

## Bedroom Two

11' 5" Max x 10' 10" Max into wardrobe ( 3.48m Max x 3.30m Max into wardrobe )

Double glazed window to front radiator, built in wardrobe, carpet

## Bedroom Three

12' 8" Max into wardrobe x 7' 7" Max ( 3.86m Max into wardrobe x 2.31m Max )

Double glazed window to rear, radiator to rear, built in cupboards, laid to carpet

## Bathroom

Bath, WC, handwash basin, - Double glazed window to rear, partial tiled walls, carpet, radiator

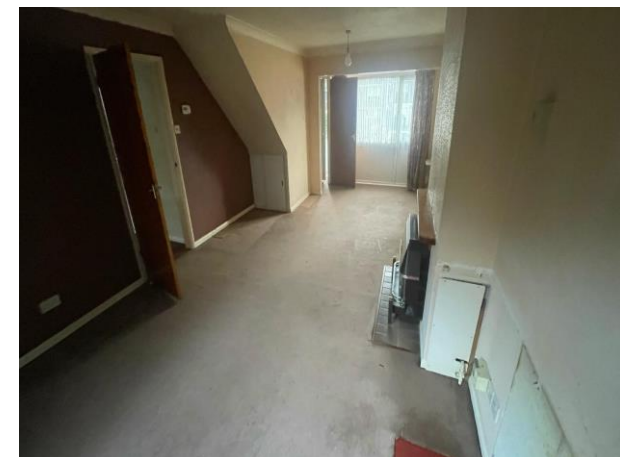
## Front Garden

Driveway, laid to lawn

## Rear Garden

Shed, laid to lawn





To view this property please contact Connells on

**T 02380 422080**  
**E Bitterne@connells.co.uk**

2 West End Road Bitterne  
 SOUTHAMPTON SO18 6TG

**EPC Rating: D**

**view this property online [connells.co.uk/Property/BTN107333](https://www.connells.co.uk/Property/BTN107333)**

Tenure: Freehold



1. MONEY LAUNDERING REGULATIONS Intending purchasers will be asked to produce identification documentation at a later stage and we would ask for your co-operation in order that there will be no delay in agreeing the sale. 2. These particulars do not constitute part or all of an offer or contract. 3. The measurements indicated are supplied for guidance only and as such must be considered incorrect. Potential buyers are advised to recheck measurements before committing to any expense. 4. We have not tested any apparatus, equipment, fixtures, fittings or services and it is in the buyers interest to check the working condition of any appliances.

Connells Residential is registered in England and Wales under company number 1489613, Registered Office is Cumbria House, 16-20 Hockliffe Street, Leighton Buzzard, Bedfordshire, LU7 1GN. VAT Registration Number is 500 2481 05.

**See all our properties at [www.connells.co.uk](https://www.connells.co.uk) | [www.rightmove.co.uk](https://www.rightmove.co.uk) | [www.zoopla.co.uk](https://www.zoopla.co.uk)**

Property Ref: BTN107333 - 0008