



Connells

Azera Capstan Road
Southampton



Property Description

This stunning upper-floor apartment offers an exceptional living experience with two spacious double bedrooms, including a master suite featuring built-in wardrobes and an en suite bathroom for ultimate convenience.

The open-plan lounge/kitchen area is perfect for modern living and entertaining, with large windows that fill the space with natural light. Step out onto the private balcony and enjoy breathtaking water views, creating a serene and picturesque backdrop.

The apartment comes with one allocated parking space, ensuring hassle-free parking. Located in a prime area, it boasts fantastic transport links, providing quick and easy access to the city.

Entrance Hall

laminate flooring, intercom, storage cupboard.

Lounge / Kitchen

26' 4" x 12' 5" (8.03m x 3.78m)

Laminate flooring, double glazed windows to front, double glazed patio door to balcony with water views, radiator to side aspect, leading to kitchen area.

Double glazed window to the side with water views, integrated fridge/freezer, integrated dishwasher, sink and draining board, wall and base cupboards, laminate flooring, electric hob and oven, oven hood.



Bedroom 1

17' 8" x 9' 8" (5.38m x 2.95m)
Double glazed window to front, laid to carpet,
radiator, integrated wardrobe.

En Suite

Laminate flooring, sink, w/c, shower with
partial wall tiles, heated towel rail, fitted mirror
above sink.

Bedroom 2

13' 10" x 9' (4.22m x 2.74m)
double glazed window to front, laid to carpet,
radiator.

Bathroom

Laminate flooring, heated towel rail, sink, w/c,
bath with shower over, partial wall tiles, fitted
mirror above sink.





This floor plan is for illustrative purposes only. It is not drawn to scale. Any measurements, floor areas (including any total floor area), openings and orientation are approximate. No details are guaranteed, they cannot be relied upon for any purpose and they do not form part of any agreement. No liability is taken for any error, omission or misstatement. A party must rely upon its own inspection(s). Powered by www.focalagent.com

To view this property please contact Connells on

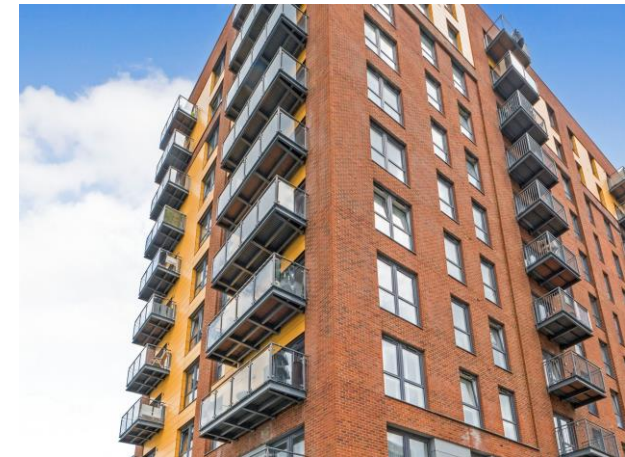
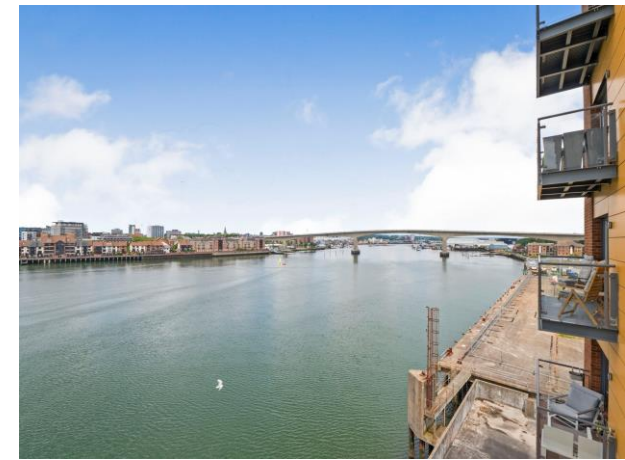
T 02380 422080
E Bitterne@connells.co.uk

2 West End Road Bitterne
 SOUTHAMPTON SO18 6TG

EPC Rating: Awaiting

view this property online connells.co.uk/Property/BTN107038

This is a Leasehold property. We are awaiting further details about the Term of the lease. For further information please contact the branch. Please note additional fees could be incurred for items such as Leasehold packs.



Tenure: Leasehold



1. MONEY LAUNDERING REGULATIONS Intending purchasers will be asked to produce identification documentation at a later stage and we would ask for your co-operation in order that there will be no delay in agreeing the sale. 2. These particulars do not constitute part or all of an offer or contract. 3. The measurements indicated are supplied for guidance only and as such must be considered incorrect. Potential buyers are advised to recheck measurements before committing to any expense. 4. We have not tested any apparatus, equipment, fixtures, fittings or services and it is in the buyers interest to check the working condition of any appliances.

Connells Residential is registered in England and Wales under company number 1489613, Registered Office is Cumbria House, 16-20 Hockliffe Street, Leighton Buzzard, Bedfordshire, LU7 1GN. VAT Registration Number is 500 2481 05.

See all our properties at www.connells.co.uk | www.rightmove.co.uk | www.zoopla.co.uk

Property Ref: BTN107038 - 0002