





Property Description

NO ONWARD CHAIN & FURNITURE UP FOR NEGOTIATION

Connells are proud to bring to market the opportunity to acquire this beautifully presented and deceptively spacious, four bedroom semi detached dormer style bungalow, nestled within the heart of Rugby on Everest Road. Everest Road in brief comprises of; entrance hall, lounge, spacious open kitchen/diner, four generous bedrooms and shower room. Externally, there is a lovely rear garden, detached garage, plus off road allocated parking for multiple vehicles large enough for two vans or caravans. This property also benefits from gas central heating with a brand new boiler, and double glazing. There is outside uplighting which creates a welcoming ambience around the house in the evening/night time. The current owners have recently renovated to a high specification, with upgraded and immaculate living accommodation across two floors.

The property is located within walking distance of the town centre, offering a great selection of High Street and independent shops as well as a wide range of restaurants, bars and coffee shops. There is a good selection of primary and secondary schooling, including academies, grammar schools, Warwickshire College and the renowned Rugby School. The property is also well positioned for the commuter with easy access to major road networks and Rugby Railway Station which offers a regular rail service to London Euston in just under 50 minutes.

Approach

The property sits on a generous plot, with a front lawn area and allocated parking to the front and side aspects for approximately six to seven vehicles in total.

Entrance Hall

A welcoming and spacious entrance hall with stairs rising to the first floor landing and access doors to downstairs reception rooms.

Lounge

12' 11" x 11' 5" (3.94m x 3.48m)
Featuring a cosy woodburner. The lounge flows through to the open plan kitchen/diner, a fantastic space for relaxing or socialising.

Kitchen/Diner

22' 6" max x 17' 8" max (6.86m max x 5.38m max)

Shower Room

Ground fitted shower room with a large walk in shower, low level WC, wash hand basin, heated towel rail and frosted window to the side aspect. There is also space for a washing machine with storage shelving above.

Bedroom One

13' 6" x 11' 3" (4.11m x 3.43m)

The spacious master bedroom is on the ground floor, and features space for a wardrobe, tall radiator, LED lighting and window to the front aspect.

Bedroom Two

12' x 11' 5" (3.66m x 3.48m)

Bedroom two is on the ground floor and features space for wardrobe, understair storage area and window to the front aspect.

Bedroom Four

8' 6" x 6' 4" (2.59m x 1.93m)

Bedroom Four is located on the ground floor, featuring fitted wardrobes and window to the side aspect. The wardrobes can be dismantled which provides space for a single bed.

Landing

First floor landing with built in storage cupboard plus side eaves allowing for plenty of storage.

Bedroom Three

14' 9" x 11' 6" (4.50m x 3.51m)

Bedroom three is located on the first floor and can also be an alternative master bedroom if preferred. Comes with a fitted/ walk in wardrobe that could be converted to an en-suite room. with sliding doors, a wash hand basin and window to the rear aspect. There is potential to add a en suite bathroom to this room.

Garage

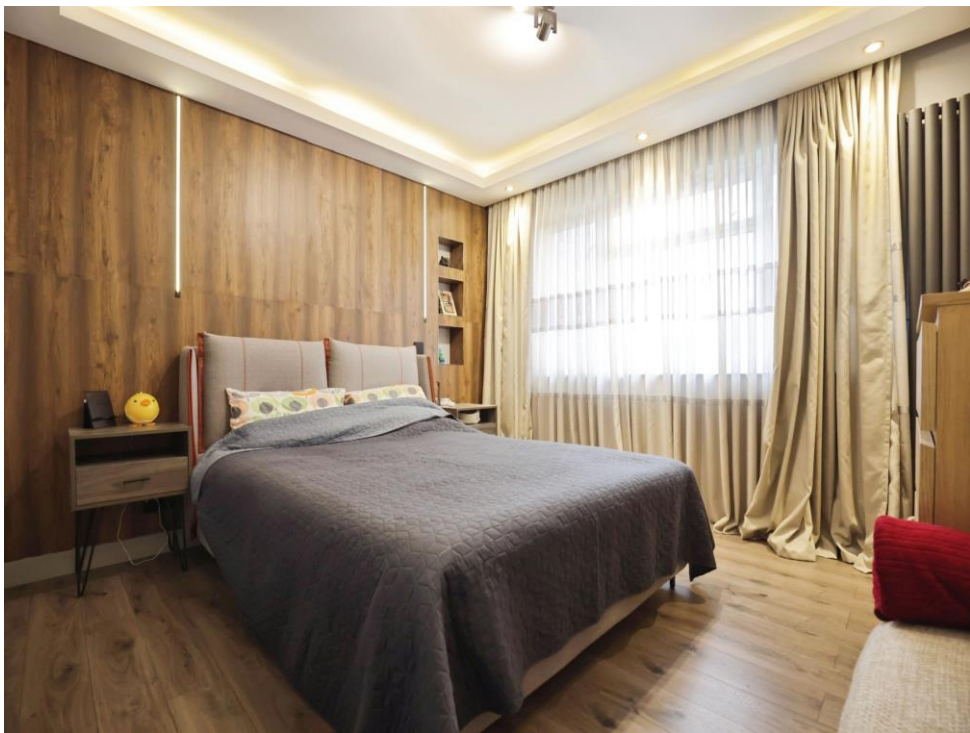
27' 4" x 9' 5" (8.33m x 2.87m)

Detached, extended bigger than average single garage, with light & power and an up & over door to the front. There is great potential for the garage to be converted into a reception space or granny annex.

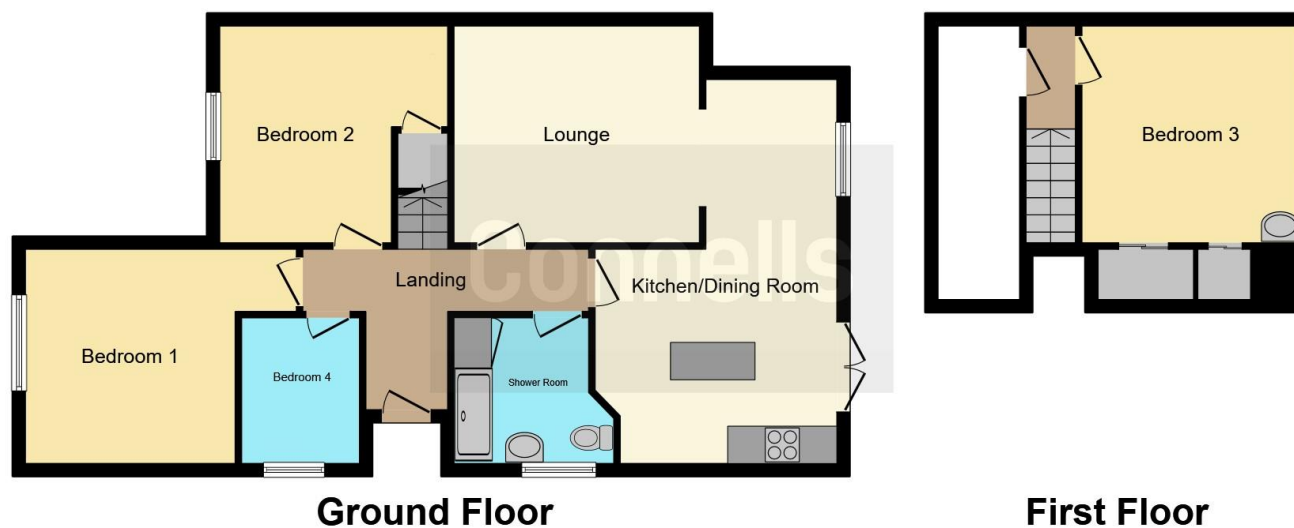
Rear Of Property

A low maintenance, well presented rear garden laid to lawn with patio area and fencing. The garden has side accessibility.









This floor plan is for illustrative purposes only. It is not drawn to scale. Any measurements, floor areas (including any total floor area), openings and orientation are approximate. No details are guaranteed, they cannot be relied upon for any purpose and they do not form part of any agreement. No liability is taken for any error, omission or misstatement. A party must rely upon its own inspection(s). Powered by www.focalagent.com

To view this property please contact Connells on

T 01788 579880
E Rugby@connells.co.uk

25 Regent Street
 RUGBY CV21 2PE

EPC Rating: C Council Tax
 Band: C

Tenure: Freehold

view this property online connells.co.uk/Property/RBY107749



1. MONEY LAUNDERING REGULATIONS Intending purchasers will be asked to produce identification documentation at a later stage and we would ask for your co-operation in order that there will be no delay in agreeing the sale. 2. These particulars do not constitute part or all of an offer or contract. 3. The measurements indicated are supplied for guidance only and as such must be considered incorrect. Potential buyers are advised to recheck measurements before committing to any expense. 4. We have not tested any apparatus, equipment, fixtures, fittings or services and it is in the buyers interest to check the working condition of any appliances.

Connells Residential is registered in England and Wales under company number 1489613, Registered Office is Cumbria House, 16-20 Hockliffe Street, Leighton Buzzard, Bedfordshire, LU7 1GN. VAT Registration Number is 500 2481 05.

See all our properties at www.connells.co.uk | www.rightmove.co.uk | www.zoopla.co.uk

Property Ref: RBY107749 - 0004