



Connells

Lutterworth Road
Walcote LUTTERWORTH



Property Description

A beautifully presented four bedroom dorma-bungalow located in the highly sought after village of Wolcote which is ideal for the commuter with easy access to the M1, M6, and A14 network of roads.

The property comprises on the ground floor, lounge with patio doors to rear garden, dining room, modern fitted kitchen and two bedrooms, both with ensuite shower rooms. The first floor accommodation comprises of a bedroom with ensuite shower room and a family bathroom with connecting door to bedroom three,

At the front of the property there is parking for several cars on driveway, wooden steps leading to a gravelled front garden that enjoys the evening sun and views over the Leicestershire countryside. To the rear of the property there is a low maintenance garden with covered seating area and hot tub. The property enjoys an elevated position. There are out door electric points front and back.

Entrance Hall

Wooden floor

Lounge

10' 11" x 13' 7" (3.33m x 4.14m)

To rear of property, wooden floor, log burner, access to rear garden.

Dining Room

9' 10" x 8' 6" (3.00m x 2.59m)

To side of property laminate floor.

Kitchen

9' 10" x 7' 7" (3.00m x 2.31m)

To front of property, modern grey kitchen units wall & base, slate floor, space for washing machine & fridge freezer.

Ground Floor

Bedroom One

10' 11" x 10' 5" (3.33m x 3.17m)

To front of property, bay window.

En-Suite

w/c & sink.

Bedroom Two

10' 1" x 10' 6" (3.07m x 3.20m)

To rear, with bay windows, ensuite shower room.

First Floor

Bedroom Four

10' 11" x 8' (3.33m x 2.44m)

To rear, Skylight, carpet, ensuite with shower.

Bedroom Three

11' 5" x 10' 7" (3.48m x 3.23m)

To rear, skylight, access to bathroom.

Bathroom

Jack & Jill bathroom, skylight, heated towel rail, shower over bath, w/c.

Outside

Front Garden

Wooden steps to gravelled garden

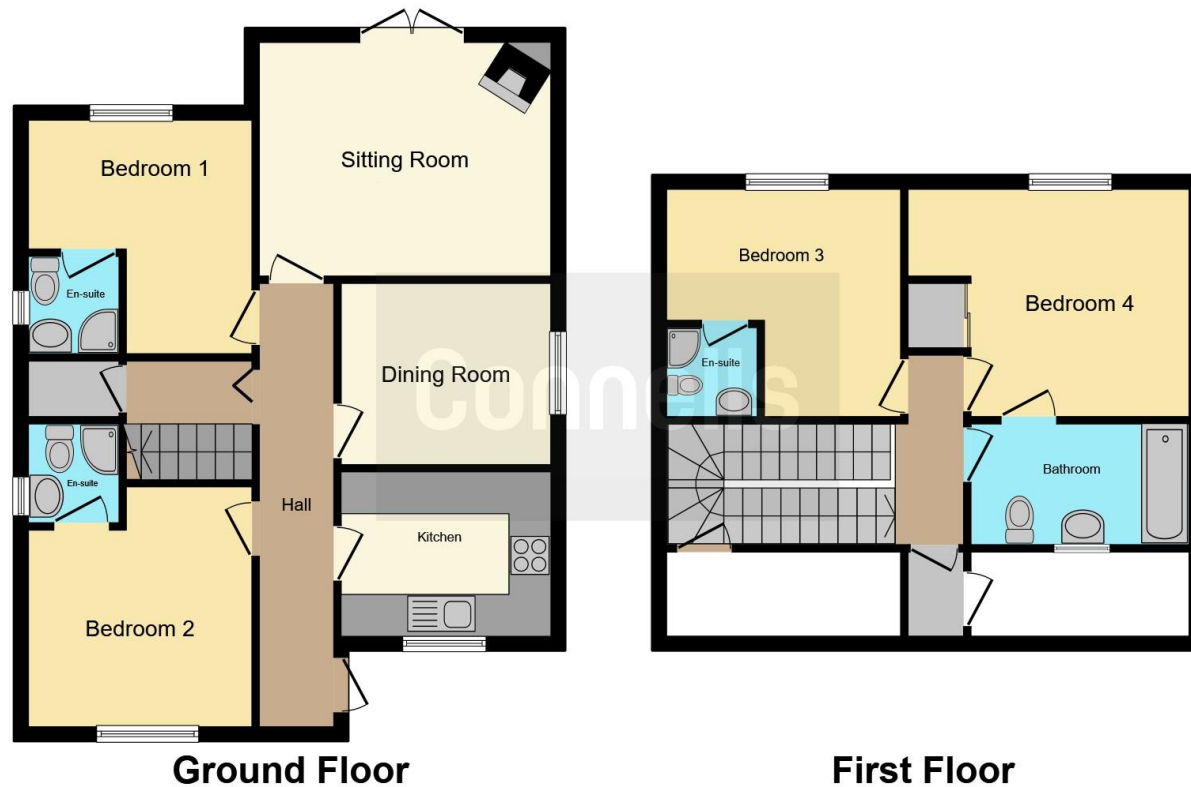
Rear Garden

Private rear garden, hot tub area, outside lighting.









This floor plan is for illustrative purposes only. It is not drawn to scale. Any measurements, floor areas (including any total floor area), openings and orientation are approximate. No details are guaranteed, they cannot be relied upon for any purpose and they do not form part of any agreement. No liability is taken for any error, omission or misstatement. A party must rely upon its own inspection(s). Powered by www.focalagent.com

To view this property please contact Connells on

T 01788 579880
E Rugby@connells.co.uk

25 Regent Street
 RUGBY CV21 2PE

EPC Rating: D

Tenure: Freehold

view this property online connells.co.uk/Property/RBY106550



1. MONEY LAUNDERING REGULATIONS Intending purchasers will be asked to produce identification documentation at a later stage and we would ask for your co-operation in order that there will be no delay in agreeing the sale. 2. These particulars do not constitute part or all of an offer or contract. 3. The measurements indicated are supplied for guidance only and as such must be considered incorrect. Potential buyers are advised to recheck measurements before committing to any expense. 4. We have not tested any apparatus, equipment, fixtures, fittings or services and it is in the buyers interest to check the working condition of any appliances.

Connells Residential is registered in England and Wales under company number 1489613, Registered Office is Cumbria House, 16-20 Hockliffe Street, Leighton Buzzard, Bedfordshire, LU7 1GN. VAT Registration Number is 500 2481 05.

See all our properties at www.connells.co.uk | www.rightmove.co.uk | www.zoopla.co.uk

Property Ref: RBY106550 - 0011