



Connells

Dale Close
Lutterworth



Property Description

A beautifully presented two bedroom semi-detached home situated in this highly sought after development in Lutterworth. The property comprises, entrance hall, cloakroom/WC, open-plan breakfast kitchen and lounge on the ground floor with two bedrooms and family bathroom on the first floor. Outside there is a private rear garden with paved seating area and driveway that will accommodate two cars to the side of the house....



Cloakroom

W/C & sink.

Lounge/ Kitchen

13' 9" x 13' 7" (4.19m x 4.14m)

Carpeted, open plan, windows & patio doors to rear garden.

Kitchen

13' x 10' 4" (3.96m x 3.15m)

Open plan to reception, gloss wall & base units, breakfast bar, tiled floor, window to front, gas hob, electric oven, half sink, downstairs cupboard.

Landing

Window to side.

Bedroom One

13' 8" x 11' 2" max (4.17m x 3.40m max)

Window to rear, carpeted.

Bedroom Two

9' 9" max x 13' 8" (2.97m max x 4.17m)

Windows to front, Carpeted.

Bathroom

Bath, w/c & sink, heated towel rail.

Front Garden

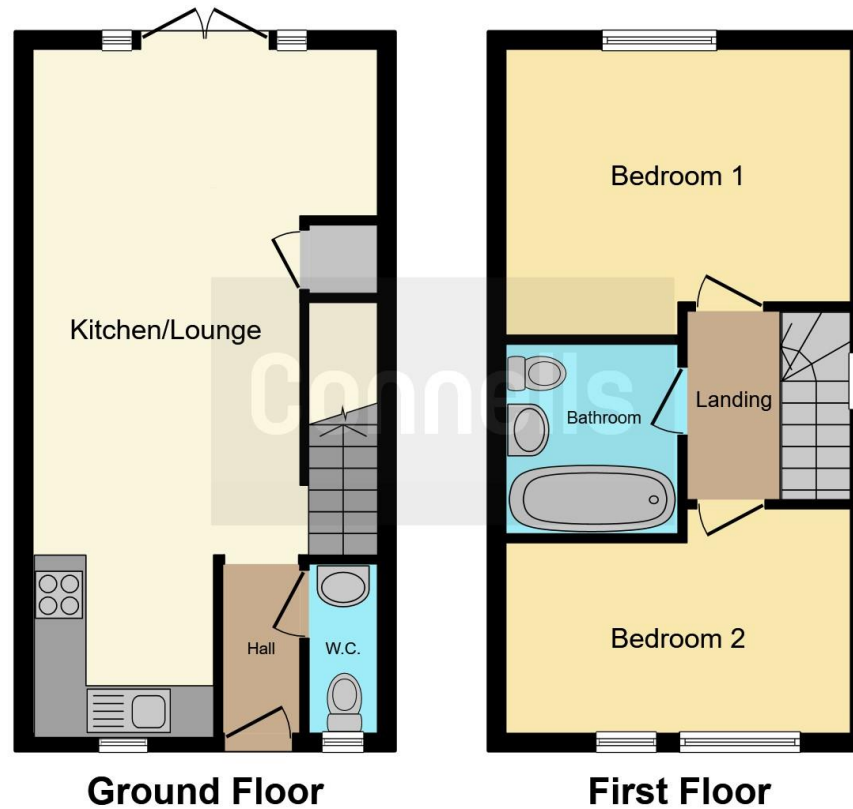
Paved patio area, lawn & bark pathway, side access.

Parking

To side of house, access to rear garden.







This floorplan is for illustrative purposes only and is not drawn to scale. Measurements, floor-areas, openings and orientations are approximate. They should not be relied upon for any purpose and do not form any part of an agreement. No liability is taken for any error or mis-statement. All parties must rely on their own inspections.

To view this property please contact Connells on

T 01788 579880
E Rugby@connells.co.uk

25 Regent Street
 RUGBY CV21 2PE

EPC Rating: B

Tenure: Freehold

view this property online connells.co.uk/Property/RBY106317



1. MONEY LAUNDERING REGULATIONS Intending purchasers will be asked to produce identification documentation at a later stage and we would ask for your co-operation in order that there will be no delay in agreeing the sale. 2. These particulars do not constitute part or all of an offer or contract. 3. The measurements indicated are supplied for guidance only and as such must be considered incorrect. Potential buyers are advised to recheck measurements before committing to any expense. 4. We have not tested any apparatus, equipment, fixtures, fittings or services and it is in the buyers interest to check the working condition of any appliances.

Connells Residential is registered in England and Wales under company number 1489613, Registered Office is Cumbria House, 16-20 Hockliffe Street, Leighton Buzzard, Bedfordshire, LU7 1GN. VAT Registration Number is 500 2481 05.

See all our properties at www.connells.co.uk | www.rightmove.co.uk | www.zoopla.co.uk

Property Ref: RBY106317 - 0005