



Ashley King

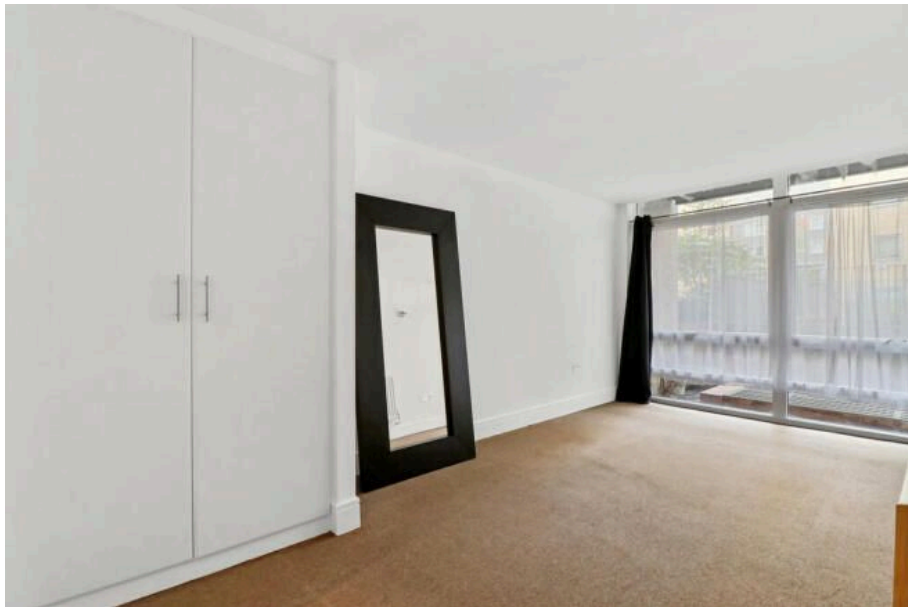
Turner House, Cassilis Road, London, E14

£475,000

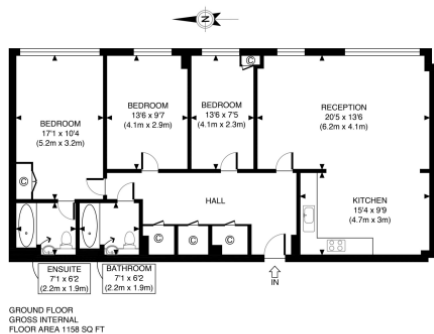
🛏 3 🚿 2 🛋 1



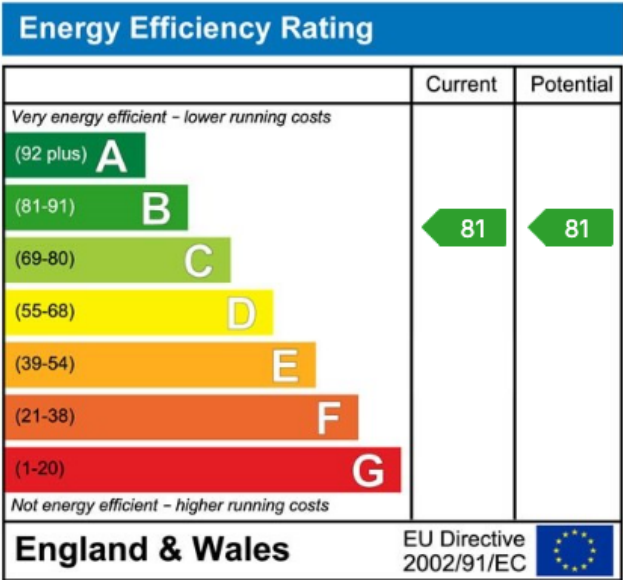
- THREE BEDROOM APARTMENT
- 24 HOUR CONCIERGE
- GYM, POOL, JACUZZI, SAUNA
- MOMENTS FROM CANARY WHARF (JUBILEE LINE + QUEEN ELIZABETH LINE)
- GROUND FLOOR
- VERY SPACIOUS 1158 SQ FT / 107.58 SQ MT
- TWO BATHROOMS
- LEASE REMAINING 977 YEARS
- EPC RATING B



Flat 10, Turner House, Cassilis Road, London, E14 9LJ We are acting in the sale of the above property and have received an offer of £475,000.00 on the above property. Any interested parties must submit any higher offers in writing to the selling agent before exchange of contracts takes place



APPROX. GROSS INTERNAL FLOOR AREA 1158 SQ FT / 108 SQM	Cassilis Road
Disclaimer: Floor plan measurements are approximate and are for illustrative purposes only. While we do not doubt the floor plan accuracy and completeness, you or your advisors should conduct a careful, independent investigation of the property in respect of monetary valuation.	see 0811103 photoplan



Ashley King Estate, Lettings & Asset Management
69 Cannon Workshops, London E14 4AS
T: 020 7052 4668 E: docklands@ashleykinguk.com

