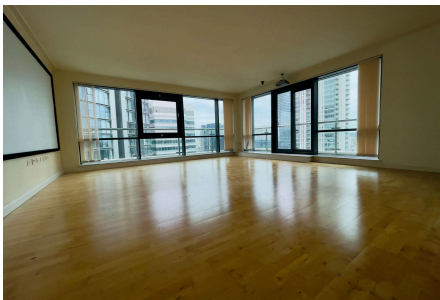


Your Logo

## Discovery Dock, South Quay Square, London E14

£550,000

🛏️ 2 🚿 1 🚗 1



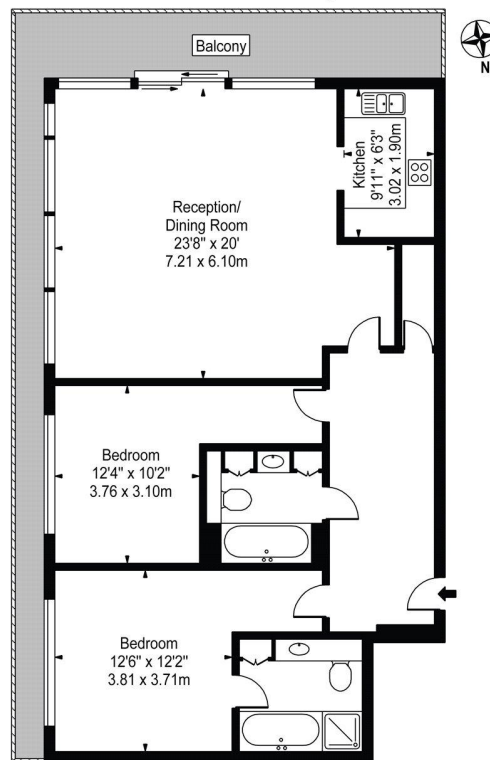
Ashley King are delighted to present this fantastic 14th floor 1158sq ft 2 bedroom 2 bathroom sub-penthouse apartment in the heart of South Quay.

# Your Logo

## Key Features

- TWO BEDROOM SUB PENTHOUSE APARTMENT
- TWO BATHROOMS
- SPACIOUS RECEPTION ROOM
- 999 YEAR LEASE
- GYM & SWIMMING POOL FACILITIES
- 14TH FLOOR
- SOUTH FACING BALCONY
- APPROX . 1000 SQ FEET LIVING SPACE
- EPC RATING C
- 24 HOUR CONCIERGE

### Discovery Dock East, E14 Approx. Gross Internal Area 1158 Sq Ft - 107.58 Sq M



Fourteenth Floor  
For Illustration Purposes Only - Not To Scale

This floor plan should be used as a general outline for guidance only and does not constitute in whole or in part an offer or contract. Any intending purchaser or lessee should satisfy themselves by inspection, searches, enquiries and full survey as to the correctness of each statement. Any areas, measurements or distances quoted are approximate and should not be used to value a property or be the basis of any sale or let.