

A TRULY RARE COMMODITY

**DOLLAR
BAY**

A TRULY RARE COMMODITY

**DOLLAR
BAY**

**INTRODUCING A STUNNING
NEW JEWEL IN THE CAPITAL'S
PRESTIGIOUS FINANCIAL
DISTRICT - DOLLAR BAY,
A GLIMPSE INTO THE BOLD
AND BEAUTIFUL FUTURE
OF HIGH-END RESIDENTIAL
TOWER LIVING.**

Offering the very best in elegant open-plan design, this sleek and stylish development provides uninterrupted views and effortless indoor to outdoor living in the financial heart of London. With the many attractions of Canary Wharf on its doorstep, Dollar Bay is truly remarkable.

*A RARE
COMMODITY
IN LONDON'S
FINANCIAL
HEART*



Computer generated image of Dollar Bay.

*“IT FEELS LIKE
A FLOW OF LAVA
BETWEEN
TWO POWERFUL
STRONG STATUESQUE
PILLARS OF
CRYSTAL.”*

IAN SIMPSON ON DOLLAR BAY



Ian Simpson photographed by Paul Wolfgang Webster.

WITH ITS RIPPLING, FACETED FAÇADE INSPIRED BY NATURAL ELEMENTS AND IN PERFECT HARMONY WITH ITS ENVIRONMENT, DOLLAR BAY SETS A BENCHMARK FOR FUTURE RESIDENTIAL DEVELOPMENTS.

Designed by international award-winning Ian Simpson Architects, Dollar Bay rises like two perfectly balanced crystals from the water's edge, the development's stunning glass façade reflecting the ever-changing light. Informed by a strong, contemporary design concept, Dollar Bay is a striking, iconic addition to Canary Wharf's impressive skyline.

**UNHINDERED BY
NEIGHBOURING BUILDINGS,
DOLLAR BAY'S PRIME
LOCATION AT THE FOOT
OF THE SOUTH DOCK MAKES
FOR SPECTACULAR - AND
UNMATCHED - VIEWS.**

Each of the 111 apartments offers a magnificent water view, either of the South Dock or the River Thames. These uninterrupted vistas across London to east and west are maximised by the angle and shape of Dollar Bay's distinctive 'crystal' structures. The result is simply breathtaking.

A VIEW OF GREAT RARITY

Indicative photograph from Dollar Bay facing West towards Canary Wharf.



*APARTMENTS WITH
UNPARALLELED VISTAS*

Indicative photograph from Dollar Bay
facing East towards River Thames and O2.

*THE APARTMENTS:
STRIKING INTERIORS
MAXIMISING
LIGHT & SPACE*



A SEDUCTIVE WINTER GARDEN IN EVERY APARTMENT

DESIGNED TO MAKE THE MOST OF ALL AVAILABLE SPACE AND LIGHT, DOLLAR BAY APARTMENTS EPITOMISE A SLEEK AND MINIMAL APPROACH TO INTERIOR DÉCOR.

Elegant, modern and uncomplicated, each apartment boasts its very own winter garden and beautiful, high contrast interiors with an emphasis on creating an easy flow of light throughout. Bespoke winter gardens feature a glass 'second skin' to allow ventilation, one of Dollar Bay's beautifully designed details.



Computer generated image of a living room at Dollar Bay.





*HIGH CONTRAST
INTERIORS
MAXIMISING
NATURAL LIGHT*



THE RESIDENTS ONLY PRIVATE GARDEN IS A HAVEN OF TRANQUILITY TO THE REAR OF DOLLAR BAY.

Designed by landscape architects, Spacehub, in response to the beautiful waterfront setting, the private garden is a calm oasis in which to relax and unwind whilst the waterfront plays host to a bright, vibrant ground floor cafe.

A PEACEFUL POCKET



Computer generated images of entrance with ground level cafe and residents' garden.

ELEGANCE AND BEAUTY IN EVERY DETAIL



Computer generated image of the gym and concierge at Dollar Bay.

ARCHITECTURE

- / An iconic landmark building in a unique setting, designed by Ian Simpson Architects

INTERIOR FINISHES

- / Walls finished in white matt emulsion
- / Full height built in wardrobe with white glass fronted doors
- / Square edged skirting and architraves finished in white satin paint

KITCHEN

- / White gloss handleless base and wall units with soft close function and a grey carcass
- / Grey gloss handleless full height units with soft close function and a grey carcass
- / Silver back painted glass splash backs
- / Stainless steel undermounted single sink bowl with feature mixer tap
- / Siemens stainless steel multi function oven
- / Siemens stainless steel combination microwave oven
- / Siemens black glass 4 zone touch control induction hob – 2 zone to studios

- / Built in canopy extractor. The 3 bedroom apartments will house a “pop up” downdraft extractor within a peninsular unit

- / Integrated fridge/freezer
- / Integrated dishwasher
- / Feature lighting
- / Stainless steel integrated wine fridge
- / Grey Composite Stone worktops
- / Condenser washer/dryer – please confirm the location with your sales consultant

BATHROOMS

- / White double ended bath with chrome retractable hand held shower, exo-fill and controls
- / Frameless fixed screen to baths
- / Corian built in basin set and countertop, chrome basin set with a feature wall mounted chrome mixer tap and Corian backsplash
- / High level mirrored storage cabinet incorporating anti mist doors, shaving point, shelving, internal and external feature lighting
- / Shower niche with shelving and feature light
- / Full height large format tiling to all walls

- / Chrome rectangular wall mounted shower head with dual function
- / Wall hung WC mounted to a Corian panel, with soft close function, concealed cistern and discrete chrome dual flush plate
- / Warm wall with chrome towel rail and robe hooks

EN-SUITE

- / Chrome rectangular wall mounted shower head with dual function
- / Chrome retractable hand held shower
- / Frameless fixed shower screen
- / Corian built in basin set and countertop, chrome basin set with a feature wall mounted chrome mixer tap and Corian backsplash
- / High level mirrored storage cabinet incorporating anti mist doors, shaving point, shelving, internal and external feature lighting
- / Full height large format tiling to all walls
- / Wall hung WC mounted to a Corian panel, with soft close function, concealed cistern and discrete chrome dual flush plate
- / Warm wall with chrome towel rail and robe hooks

INTERIOR FLOOR FINISHES

- / Large format anthracite tiles to all apartment areas

DOOR FINISHES & IRONMONGERY

- / 1.5 leaf grey entrance door with portal frame, integrated lighting and feature handle
- / White satin internal doors with feature handles
- / Chrome ironmongery

WINTER GARDENS

- / Operable louvered winter gardens
- / Dual access to winter gardens, from the living room and bedrooms via glazed sliding doors
- / Large format anthracite tiles to all winter gardens
- / Low level feature lighting and external power point

ELECTRICAL

- / Energy efficient recessed downlights throughout
- / LED low energy light fittings to apartments
- / Telephone data points in living area and bedrooms
- / Satin steel high level switch plates
- / Facility for Sky+ multiroom to living area and master bedroom
- / Switched feature lighting to kitchens and bathrooms

HEATING & HOT WATER

- / Under floor heating throughout the apartment
- / Hot water supplied by centralised boiler system
- / Comfort cooling to living area and master bedroom

SECURITY & PEACE OF MIND

- / 10 year warranty cover under Premier buildwork scheme
- / 24 hour on-site concierge service
- / Access to apartments via audio/visual colour entry system
- / Multi point locking to front entrance doors
- / Mains supply operated smoke/heat detectors with battery back up

COMMUNAL AREAS

- / Landscaped private residents' garden area designed by Spacehub, incorporating mixed zones, considered planting and feature lighting
- / Gym with views towards the dock featuring a range of cardiovascular and free weight equipment and changing facilities
- / Residents' lounge area
- / Cycle storage with secure access
- / Entrance lobby created to enhance the arrival experience with a glazed link to the mezzanine level, bespoke sculptural wall/soffit feature with coordinated reception desk and carefully selected complementary furniture
- / Central core with two passenger lifts
- / Naturally lit common corridors with carpeted floor finish

SUSTAINABLE FEATURES

- / Rainwater harvesting for landscape irrigation
- / Green roof to ancillary building for biodiversity
- / Array of PV cells to the roof of the tower
- / Dock water comfort cooling

*CANARY WHARF:
AN EVER GROWING
DESTINATION*



HEADQUARTERS TO THE FINANCIAL LEADERS

AS MANY MAJOR INSTITUTIONS RELOCATE FROM THE CITY, IT'S CLEAR THAT CANARY WHARF IS EMERGING AS LONDON'S NEW FINANCIAL HEART.

16 major banks and media corporations have already made the move to Canary Wharf and by 2016 the area is expected to accommodate 150,000 jobs. With them they will bring further growth and opportunities. London's financial future is here. Make yourself at home.



THE NEW STYLE OF ENTERTAINER

Photo of Canada Square.

**A DYNAMIC AND EVOLVING
LEISURE DESTINATION, CANARY
WHARF IS SO MUCH MORE THAN
A PLACE TO WORK.**

With a year-round programme of arts, music, and leisure events providing a selection of world-class entertainment options from DJ's and comedy nights to screenings and sports events, you'll never lack for choice.

And for those who prefer the outdoors, 65 pieces of public art are spread over 3.9 hectares of parks and waterside walkways, whilst well-maintained lawns and leafy areas provide quieter havens in which to relax. There truly is something for everyone.



AN ABUNDANCE OF STYLE & QUALITY FROM FASHION'S ELITE

*TWO HUNDRED
BRANDS FROM
HIGH STREET
TO HIGH-FASHION*

**STYLE AND CONVENIENCE
COME TOGETHER TO PROVIDE
A TRULY WORLD-CLASS RETAIL
EXPERIENCE, RIGHT ON YOUR
DOORSTEP.**

Canary Wharf offers shoppers more than 240 retail and leisure outlets spread over two shopping malls, with many more set to follow. With pop-up food festivals and farmers markets alongside high street brands and haute couture, you'll find everything you could wish for.





INDULGE YOUR TASTE WITH THE FINEST DINING

**FROM CELEBRATORY
CHAMPAGNE AND CAVIAR TO
YOUR MORNING COFFEE AND
CROISSANT, CANARY WHARF
CATERS FOR EVERY OCCASION.**

The wide variety of bars and restaurants available includes popular chains such as Wahaca, Wagamama and Byron as well as your favourite coffee outlets and lunchtime eateries. Discover true fine dining at the newly opened Pearson Room, Roka or Plateau, all just a few moments from home.



Above: Photo of Canteen, Roka and Parlor at Canada Square.
Right: Photo of Roka.



WELCOME TO A THRIVING CULTURAL HUB DEDICATED TO CELEBRATING THE VISUAL ARTS IN A BEAUTIFUL MARITIME ENVIRONMENT.

Home to the Docklands Museum, Canary Wharf is also proud to display one of the UK's largest collections of public art. More than 65 works including many sculptures and installations from a variety of renowned artists enhance the area's natural and urban environment, providing talking points and visual interest.

*AN EXEMPLARY ENVIRONMENT
CREATED BY A FINE
COLLECTION
OF ART*



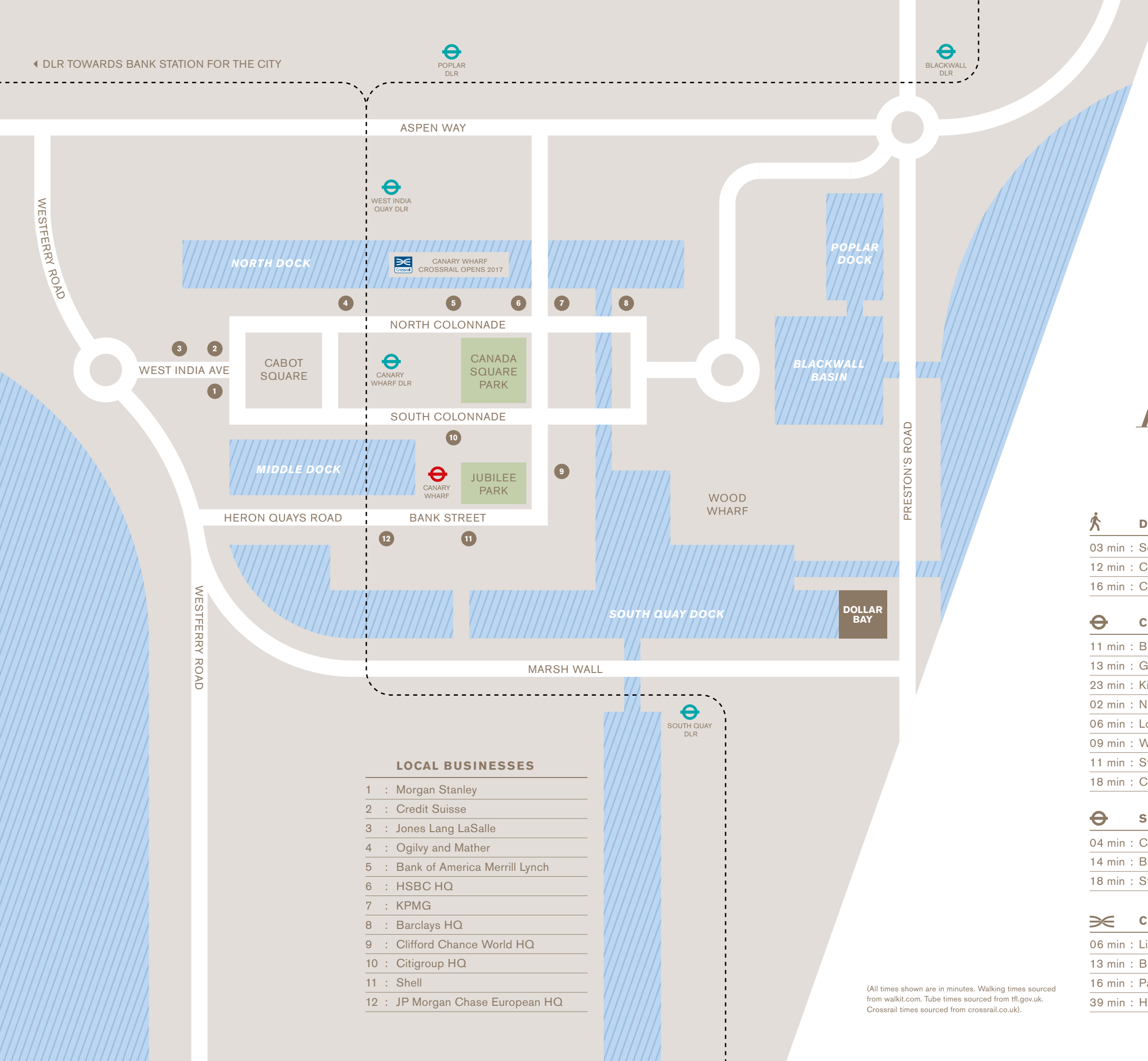
THE DOCKS GIVE RISE TO A NEW STATION

AS PART OF NEW TRANSPORT LINKS RUNNING BETWEEN EAST AND WEST, CANARY WHARF'S CROSSRAIL STATION WILL OPEN IN 2017.

The new service is expected to decrease travel times to key destinations, linking Canary Wharf to Liverpool Street (6 mins) Bond Street (13 mins) Paddington (16 mins) and Heathrow (39 mins).

Featuring a stunning glass-topped design and housing six storeys of retail and green space, the station will doubtless become a destination in its own right.

◀ DLR TOWARDS BANK STATION FOR THE CITY



WHEREVER YOU NEED TO GO, DOLLAR BAY HAS THE CONNECTIONS TO HELP YOU GET THERE.

With more than 1.2 million people passing through Canary Wharf each week, the area has well-established transport links by rail, road and river. Nearby rail stations include Canary Wharf and South Quay, with the Canary Wharf Pier to the west. And with Crossrail opening a station in 2017, the area will soon be even more well-connected.

FEEL EVER CONNECTED



DOLLAR BAY

- 03 min : South Quay Station
- 12 min : Canary Wharf Station
- 16 min : Crossrail Station



CANARY WHARF UNDERGROUND

- 11 min : Bond Street
- 13 min : Green Park
- 23 min : King's Cross
- 02 min : North Greenwich
- 06 min : London Bridge
- 09 min : Waterloo
- 11 min : Stratford
- 18 min : City Airport



SOUTH QUAY DLR

- 04 min : Canary Wharf
- 14 min : Bank
- 18 min : Stratford



CROSSRAIL

- 06 min : Liverpool Street
- 13 min : Bond Street
- 16 min : Paddington
- 39 min : Heathrow

LOCAL BUSINESSES

- 1 : Morgan Stanley
- 2 : Credit Suisse
- 3 : Jones Lang LaSalle
- 4 : Ogilvy and Mather
- 5 : Bank of America Merrill Lynch
- 6 : HSBC HQ
- 7 : KPMG
- 8 : Barclays HQ
- 9 : Clifford Chance World HQ
- 10 : Citigroup HQ
- 11 : Shell
- 12 : JP Morgan Chase European HQ

(All times shown are in minutes. Walking times sourced from walkit.com. Tube times sourced from tfl.gov.uk. Crossrail times sourced from crossrail.co.uk).

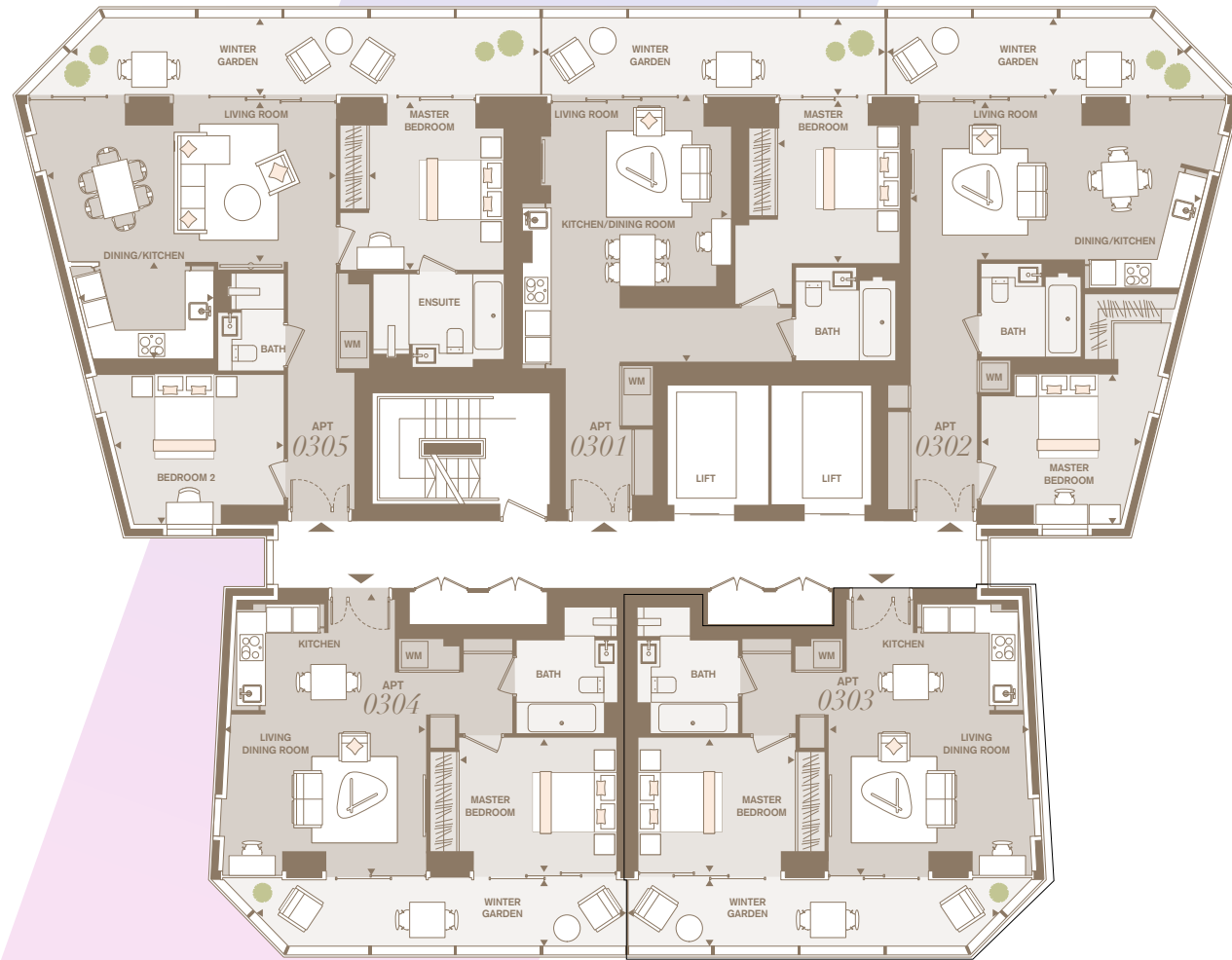


THE FLOORPLANS: STUDIO, 1, 2 & 3 BEDROOM APARTMENTS

The kitchen, furniture layouts and dimensions on the following floorplans are for guidance only. Dimensions are taken from the points indicated and are not intended to be used for carpet sizes, appliance space or items of furniture. The m² and ft² are measured as gross internal areas using the RICS code to measuring. Winter gardens may vary in size, please check with the Sales Consultant. Apartment layouts shown here are for approximate measurements only. All measurements and areas may vary within a tolerance of 5%.

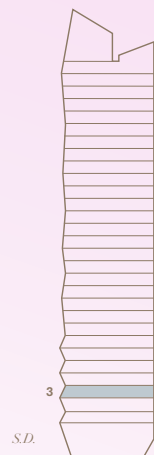
LEVEL 3

SOUTH DOCK
S.D.



RIVER THAMES
R.T.

APARTMENT 0301	APARTMENT 0302	APARTMENT 0303	APARTMENT 0304	APARTMENT 0305
INTERNAL AREA 629 sq ft, 58.5 sq m	INTERNAL AREA 629 sq ft, 58.5 sq m	INTERNAL AREA 571 sq ft, 53.0 sq m	INTERNAL AREA 568 sq ft, 52.8 sq m	INTERNAL AREA 866 sq ft, 80.5 sq m
WINTER GARDEN AREA 146 sq ft, 13.6 sq m	WINTER GARDEN AREA 128 sq ft, 11.9 sq m	WINTER GARDEN AREA 135 sq ft, 12.6 sq m	WINTER GARDEN AREA 136 sq ft, 12.6 sq m	WINTER GARDEN AREA 202 sq ft, 18.7 sq m
TOTAL AREA including W/G 775 sq ft, 72 sq m	TOTAL AREA including W/G 758 sq ft, 70.4 sq m	TOTAL AREA including W/G 706 sq ft, 65.6 sq m	TOTAL AREA including W/G 704 sq ft, 65.4 sq m	TOTAL AREA including W/G 1068 sq ft, 99.2 sq m
LIVING/DINING/KITCHEN 5840mm x 4708mm 19' 2" x 15' 5"	LIVING/DINING/KITCHEN 6611mm x 3525mm 21' 8" x 11' 7"	LIVING/DINING/KITCHEN 6140mm x 4464mm 20' 2" x 14' 8"	LIVING/DINING/KITCHEN 6140mm x 4475mm 20' 2" x 14' 8"	LIVING/DINING 6560mm x 3580mm 21' 6" x 11' 9"
MASTER BEDROOM 3610mm x 2750mm 11' 10" x 9' 0"	MASTER BEDROOM 3390mm x 3580mm 11' 9" x 11' 1"	MASTER BEDROOM 3555mm x 3020mm 11' 8" x 9' 10"	MASTER BEDROOM 3555mm x 3020mm 11' 8" x 9' 10"	KITCHEN 2993mm x 2197mm 9' 10" x 7' 2"
MASTER BEDROOM 3610mm x 2750mm 11' 10" x 9' 0"	WINTER GARDEN 2862mm x 1747mm 22' 5" x 5' 9"	WINTER GARDEN 8378mm x 1500mm 27' 6" x 4' 11"	WINTER GARDEN 8378mm x 1500mm 27' 6" x 4' 11"	MASTER BEDROOM 3760mm x 3015mm 12' 4" x 9' 11"
WINTER GARDEN 7757mm x 1747mm 25' 4" x 5' 9"				BEDROOM 2 3958 x 3361mm 13' 0" x 11' 0"
				WINTER GARDEN 10730mm x 1747mm 35' 2" x 5' 9"



S.D. R.T.

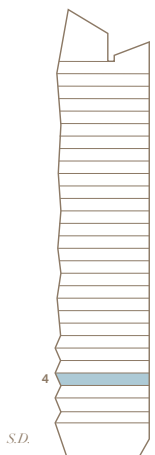
LEVEL 4

SOUTH DOCK
S.D.



RIVER THAMES
R.T.

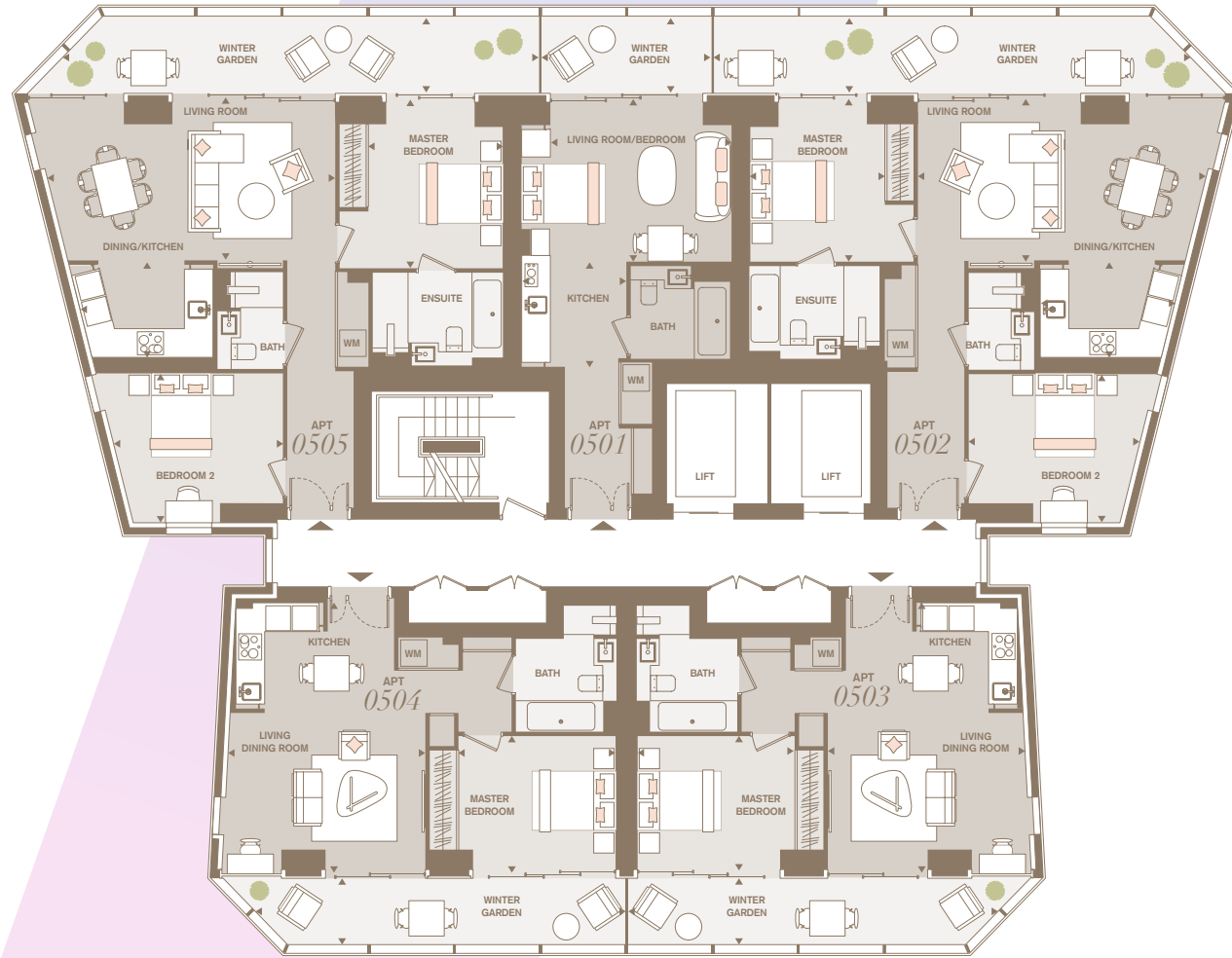
APARTMENT 0401	APARTMENT 0402	APARTMENT 0403	APARTMENT 0404	APARTMENT 0405
INTERNAL AREA 382 sq ft, 35.5 sq m	INTERNAL AREA 869 sq ft, 80.7 sq m	INTERNAL AREA 571 sq ft, 53.0 sq m	INTERNAL AREA 568 sq ft, 52.8 sq m	INTERNAL AREA 866 sq ft, 80.5 sq m
WINTER GARDEN AREA 62 sq ft, 5.8 sq m	WINTER GARDEN AREA 175 sq ft, 16.3 sq m	WINTER GARDEN AREA 135 sq ft, 12.6 sq m	WINTER GARDEN AREA 136 sq ft, 12.6 sq m	WINTER GARDEN AREA 175 sq ft, 16.3 sq m
TOTAL AREA including W/G 444 sq ft, 41.2 sq m	TOTAL AREA including W/G 1044 sq ft, 97 sq m	TOTAL AREA including W/G 706 sq ft, 65.6 sq m	TOTAL AREA including W/G 704 sq ft, 65.4 sq m	TOTAL AREA including W/G 1041.3 sq ft, 96.7 sq m
LIVING/BEDROOM 4100mm x 3610mm 13' 5" x 11' 10"	LIVING/DINING 6527mm x 3550mm 22' 3" x 11' 9"	LIVING/DINING/KITCHEN 6037mm x 4464mm 19' 10" x 14' 8"	LIVING/DINING/KITCHEN 6037mm x 4464mm 19' 10" x 14' 8"	LIVING/DINING 6560mm x 3580mm 21' 6" x 11' 9"
KITCHEN 2380mm x 2370mm 7' 10" x 7' 9"	KITCHEN 3026mm x 2197mm 9' 11" x 7' 2"	MASTER BEDROOM 3555mm x 3020mm 11' 8" x 9' 11"	MASTER BEDROOM 3555mm x 3020mm 11' 8" x 9' 11"	KITCHEN 2989mm x 2197mm 9' 10" x 7' 2"
WINTER GARDEN 3835mm x 1500mm 12' 8" x 4' 11"	MASTER BEDROOM 3610mm x 3040mm 11' 10" x 10' 10"	WINTER GARDEN 8378mm x 1500mm 27' 6" x 4' 11"	WINTER GARDEN 8378mm x 1500mm 27' 6" x 4' 11"	MASTER BEDROOM 3760mm x 3040mm 12' 4" x 10' 0"
	BEDROOM 2 3878mm x 3364mm 12' 9" x 11' 0"			BEDROOM 2 3843mm x 3364mm 12' 7" x 11' 0"
	WINTER GARDEN 10851mm x 1500mm 35' 7" x 4' 11"			WINTER GARDEN 10852mm x 1500mm 35' 7" x 4' 11"



S.D. R.T.

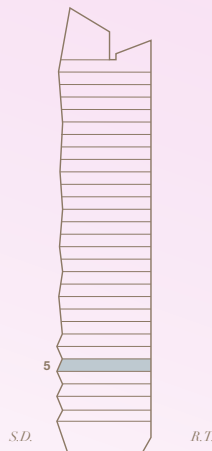
LEVEL 5

SOUTH DOCK
S.D.



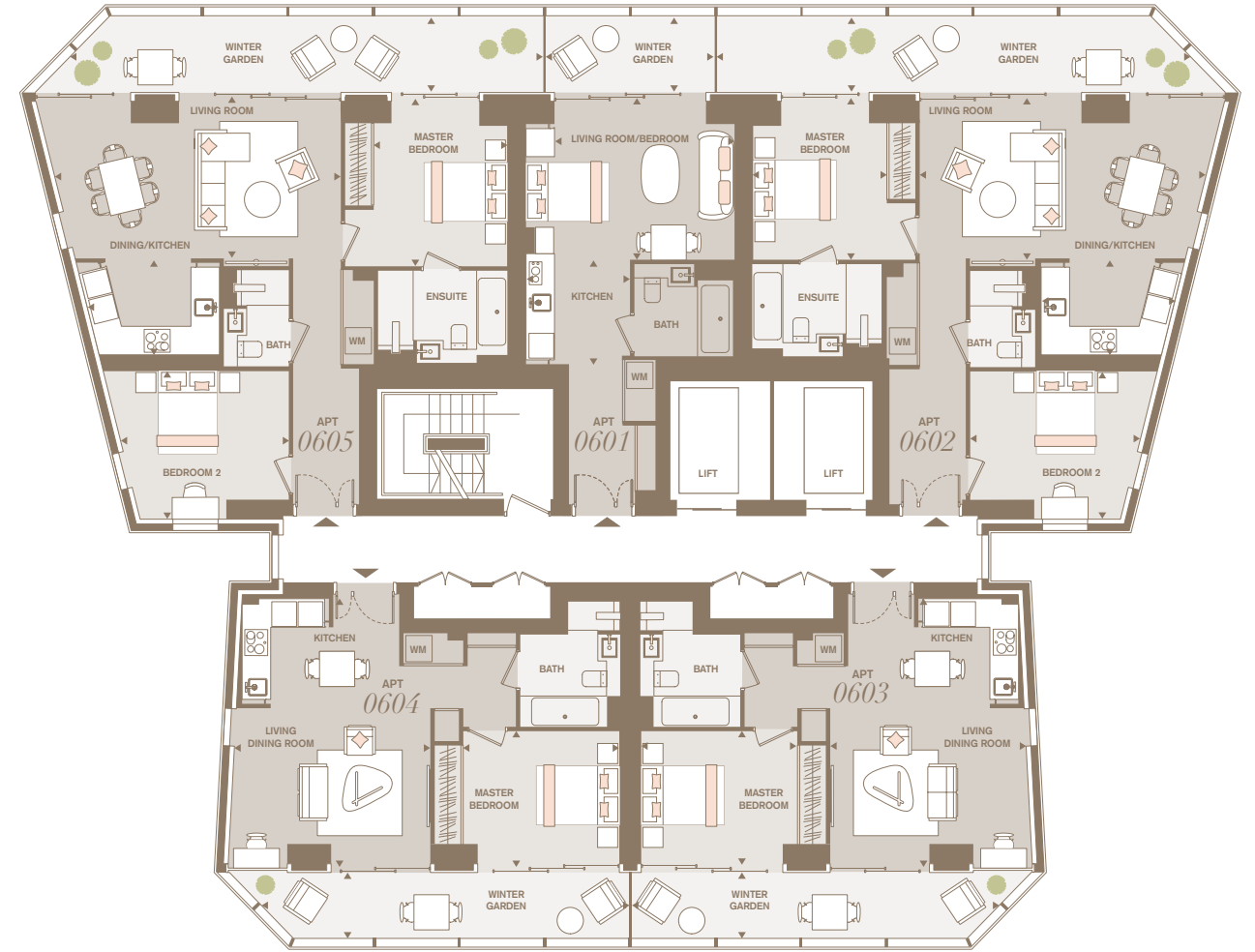
RIVER THAMES
R.T.

APARTMENT 0501	APARTMENT 0502	APARTMENT 0503	APARTMENT 0504	APARTMENT 0505
INTERNAL AREA 382 sq ft, 35.5 sq m	INTERNAL AREA 869 sq ft, 80.7 sq m	INTERNAL AREA 571 sq ft, 53.0 sq m	INTERNAL AREA 568 sq ft, 52.8 sq m	INTERNAL AREA 866 sq ft, 80.5 sq m
WINTER GARDEN AREA 72 sq ft, 6.7 sq m	WINTER GARDEN AREA 202 sq ft, 18.7 sq m	WINTER GARDEN AREA 135 sq ft, 12.6 sq m	WINTER GARDEN AREA 136 sq ft, 12.6 sq m	WINTER GARDEN AREA 202 sq ft, 18.7 sq m
TOTAL AREA including W/G 454 sq ft, 42.2 sq m	TOTAL AREA including W/G 1070 sq ft, 99.4 sq m	TOTAL AREA including W/G 705 sq ft, 65.6 sq m	TOTAL AREA including W/G 704 sq ft, 65.4 sq m	TOTAL AREA including W/G 1068 sq ft, 99.2 sq m
LIVING/DINING 4100mm x 3610mm 13' 5" x 11' 10"	LIVING/DINING 6527mm x 3550mm 22' 3" x 11' 9"	LIVING/DINING/ KITCHEN 6037mm x 4464mm 19' 10" x 14' 8"	LIVING/DINING/ KITCHEN 6037mm x 4464mm 19' 10" x 14' 8"	LIVING/DINING 6560mm x 3580mm 21' 6" x 11' 9"
KITCHEN 2380mm x 2370mm 7' 10" x 7' 9"	KITCHEN 3026mm x 2197mm 9' 11" x 7' 2"	MASTER BEDROOM 3555mm x 3020mm 11' 8" x 9' 11"	MASTER BEDROOM 3555mm x 3020mm 11' 8" x 9' 11"	KITCHEN 2989mm x 2197mm 9' 10" x 7' 2"
WINTER GARDEN 3853mm x 1747mm 12' 8" x 5' 9"	MASTER BEDROOM 3610mm x 3040mm 11' 10" x 10' 10"	WINTER GARDEN 8378mm x 1500mm 27' 6" x 4' 11"	WINTER GARDEN 8378mm x 1500mm 27' 6" x 4' 11"	MASTER BEDROOM 3760mm x 3040mm 12' 4" x 10' 0"
	BEDROOM 2 3878mm x 3364mm 12' 9" x 11' 0"			BEDROOM 2 3843mm x 3364mm 12' 7" x 11' 0"
	WINTER GARDEN 10851mm x 1747mm 35' 7" x 5' 9"			WINTER GARDEN 10730mm x 1747mm 35' 2" x 5' 9"



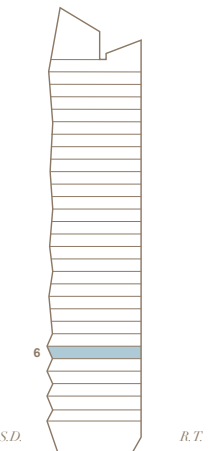
LEVEL 6

SOUTH DOCK
S.D.



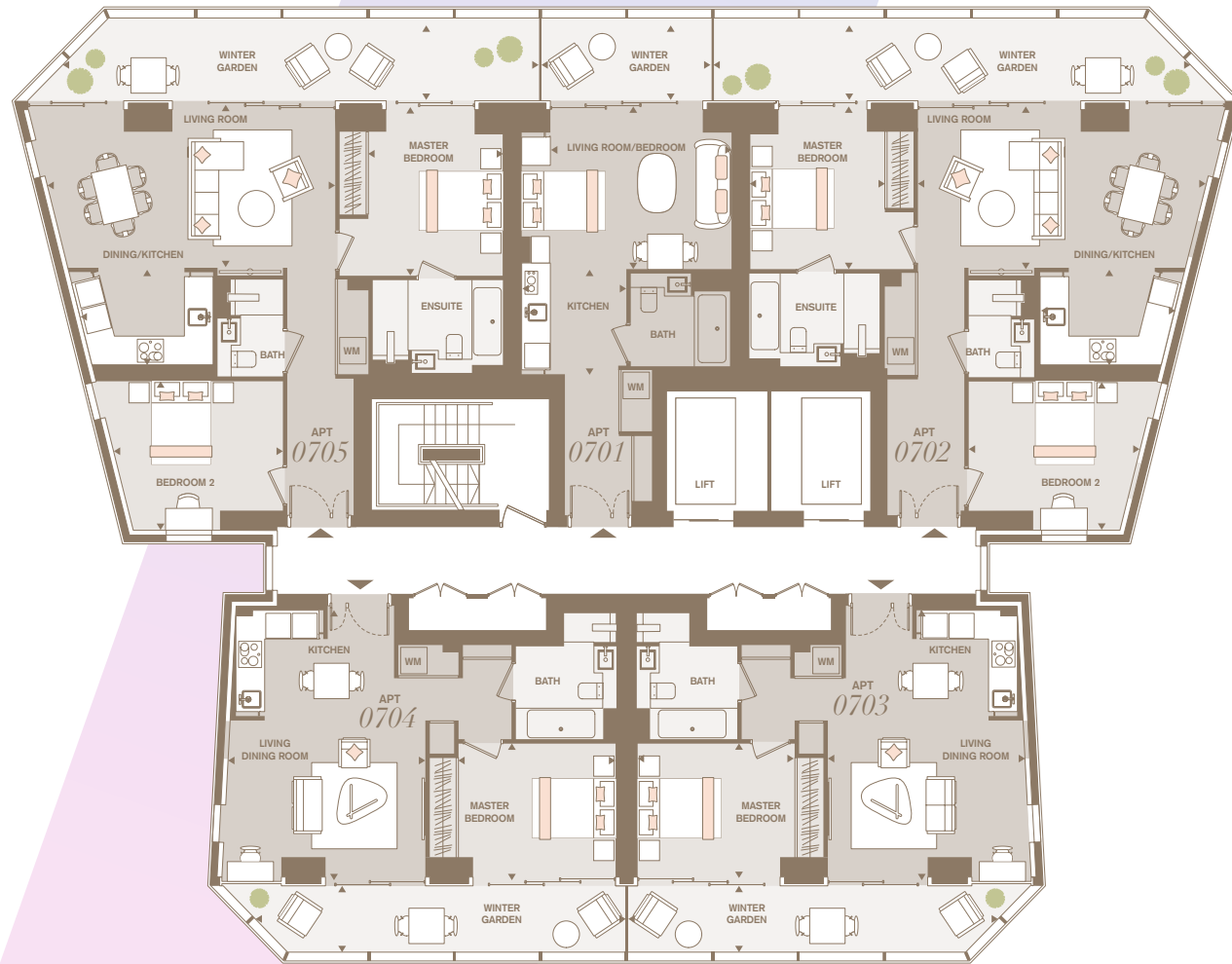
RIVER THAMES
R.T.

APARTMENT 0601	APARTMENT 0602	APARTMENT 0603	APARTMENT 0604	APARTMENT 0605
INTERNAL AREA 382 sq ft, 35.5 sq m	INTERNAL AREA 869 sq ft, 80.7 sq m	INTERNAL AREA 571 sq ft, 53.0 sq m	INTERNAL AREA 568 sq ft, 52.8 sq m	INTERNAL AREA 866 sq ft, 80.5 sq m
WINTER GARDEN AREA 62 sq ft, 5.8 sq m	WINTER GARDEN AREA 175 sq ft, 16.3 sq m	WINTER GARDEN AREA 135 sq ft, 12.6 sq m	WINTER GARDEN AREA 136 sq ft, 12.6 sq m	WINTER GARDEN AREA 202 sq ft, 18.7 sq m
TOTAL AREA including W/G 444 sq ft, 41.2 sq m	TOTAL AREA including W/G 1044 sq ft, 97 sq m	TOTAL AREA including W/G 706 sq ft, 65.6 sq m	TOTAL AREA including W/G 704 sq ft, 65.4 sq m	TOTAL AREA including W/G 1041 sq ft, 96.7 sq m
LIVING/DINING 4100mm x 3610mm 13' 5" x 11' 10"	LIVING/DINING 6527mm x 3550mm 22' 3" x 11' 9"	LIVING/DINING/ KITCHEN 6037mm x 4464mm 19' 10" x 14' 8"	LIVING/DINING/ KITCHEN 6037mm x 4464mm 19' 10" x 14' 8"	LIVING/DINING 6560mm x 3580mm 21' 6" x 11' 9"
KITCHEN 2380mm x 2370mm 7' 10" x 7' 9"	KITCHEN 3026mm x 2197mm 9' 11" x 7' 2"	MASTER BEDROOM 3555mm x 3020mm 11' 8" x 9' 11"	MASTER BEDROOM 3555mm x 3020mm 11' 8" x 9' 11"	KITCHEN 2989mm x 2197mm 9' 10" x 7' 2"
WINTER GARDEN 3853mm x 1500mm 12' 8" x 4' 11"	MASTER BEDROOM 3610mm x 3040mm 11' 10" x 10' 10"	WINTER GARDEN 8378mm x 1500mm 27' 6" x 4' 11"	WINTER GARDEN 8378mm x 1500mm 27' 6" x 4' 11"	MASTER BEDROOM 3760mm x 3040mm 12' 4" x 10' 0"
	BEDROOM 2 3878mm x 3364mm 12' 9" x 11' 0"			BEDROOM 2 3843mm x 3364mm 12' 7" x 11' 0"
	WINTER GARDEN 10851mm x 1500mm 35' 7" x 4' 11"			WINTER GARDEN 10850mm x 1500mm 35' 7" x 4' 11"



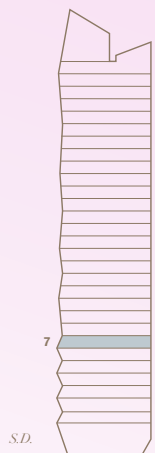
LEVEL 7

SOUTH DOCK
S.D.



RIVER THAMES
R.T.

APARTMENT 0701	APARTMENT 0702	APARTMENT 0703	APARTMENT 0704	APARTMENT 0705
INTERNAL AREA 382 sq ft, 35.5 sq m	INTERNAL AREA 869 sq ft, 80.7 sq m	INTERNAL AREA 571 sq ft, 53.0 sq m	INTERNAL AREA 568 sq ft, 52.8 sq m	INTERNAL AREA 866 sq ft, 80.5 sq m
WINTER GARDEN AREA 78 sq ft, 7.2 sq m	WINTER GARDEN AREA 215 sq ft, 20 sq m	WINTER GARDEN AREA 135 sq ft, 12.6 sq m	WINTER GARDEN AREA 136 sq ft, 12.6 sq m	WINTER GARDEN AREA 215 sq ft, 20 sq m
TOTAL AREA including W/G 459 sq ft, 42.7 sq m	TOTAL AREA including W/G 1084 sq ft, 100.7 sq m	TOTAL AREA including W/G 706 sq ft, 65.6 sq m	TOTAL AREA including W/G 704 sq ft, 65.4 sq m	TOTAL AREA including W/G 1081 sq ft, 100.5 sq m
LIVING/DINING 4100mm x 3610mm 13' 5" x 11' 10"	LIVING/DINING 6527mm x 3550mm 22' 3" x 11' 9"	LIVING/DINING/ KITCHEN 6037mm x 4464mm 19' 10" x 14' 8"	LIVING/DINING/ KITCHEN 6037mm x 4464mm 19' 10" x 14' 8"	LIVING/DINING 6560mm x 3580mm 21' 6" x 11' 9"
KITCHEN 2380mm x 2370mm 7' 10" x 7' 9"	KITCHEN 3026mm x 2197mm 9' 11" x 7' 2"	MASTER BEDROOM 3555mm x 3020mm 11' 8" x 9' 11"	MASTER BEDROOM 3555mm x 3020mm 11' 8" x 9' 11"	KITCHEN 2989mm x 2197mm 9' 10" x 7' 2"
WINTER GARDEN 3853mm x 1874mm 12' 8" x 6' 2"	MASTER BEDROOM 3760mm x 3040mm 12' 4" x 10' 0"	WINTER GARDEN 8378mm x 1500mm 27' 6" x 4' 11"	WINTER GARDEN 8378mm x 1500mm 27' 6" x 4' 11"	MASTER BEDROOM 3760mm x 3040mm 12' 4" x 10' 0"
	BEDROOM 2 3878mm x 3364mm 12' 9" x 11' 0"			BEDROOM 2 3843mm x 3364mm 12' 7" x 11' 0"
	WINTER GARDEN 10851mm x 1874mm 35' 7" x 6' 2"			WINTER GARDEN 10666mm x 1874mm 35' 0" x 6' 2"

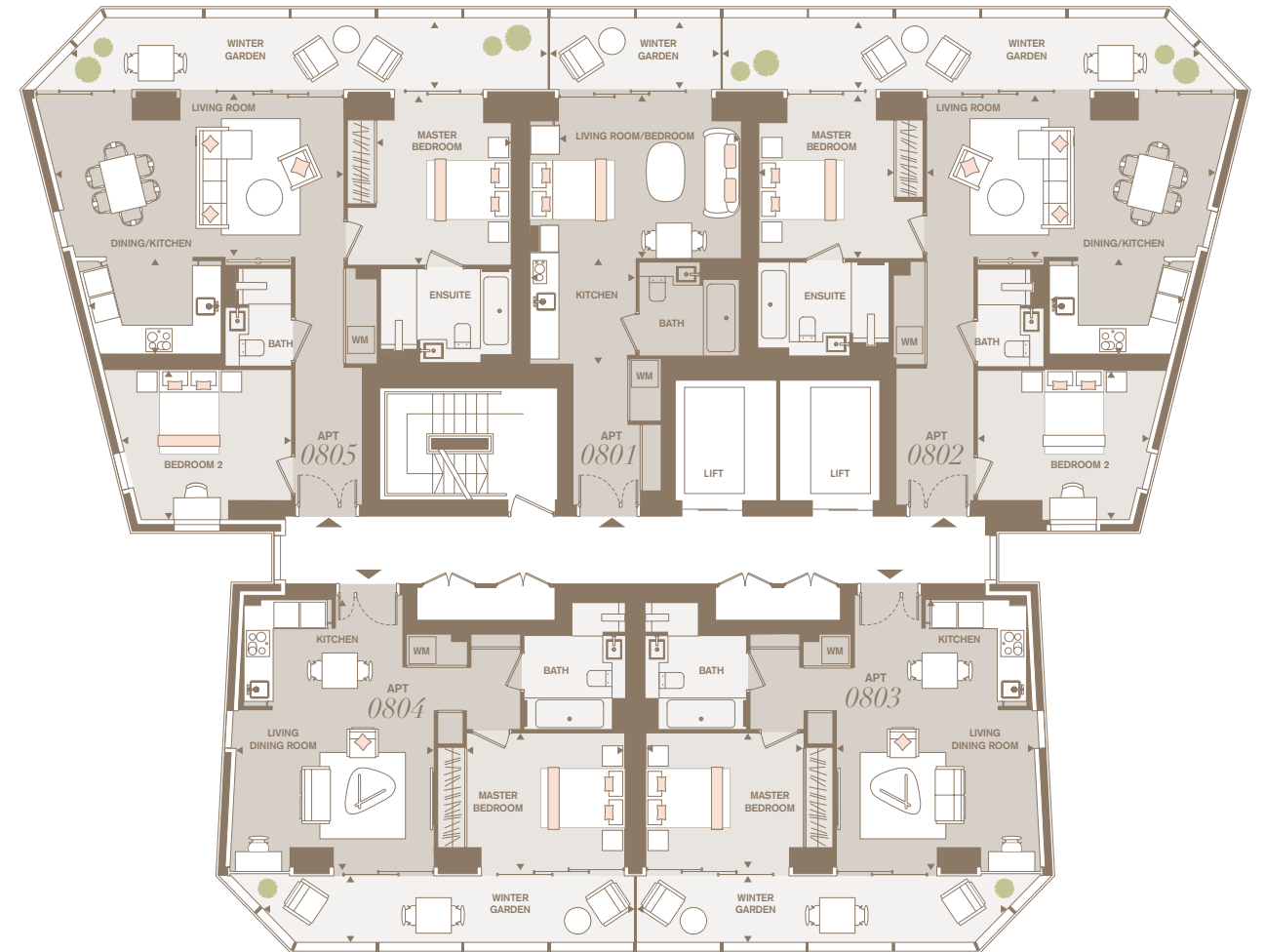


S.D.

R.T.

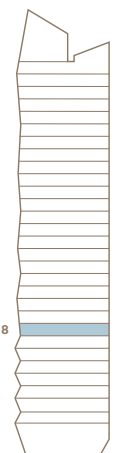
LEVEL 8

SOUTH DOCK
S.D.



RIVER THAMES
R.T.

APARTMENT 0801	APARTMENT 0802	APARTMENT 0803	APARTMENT 0804	APARTMENT 0805
INTERNAL AREA 382 sq ft, 35.5 sq m	INTERNAL AREA 869 sq ft, 80.7 sq m	INTERNAL AREA 571 sq ft, 53.0 sq m	INTERNAL AREA 568 sq ft, 52.8 sq m	INTERNAL AREA 866 sq ft, 80.5 sq m
WINTER GARDEN AREA 67 sq ft, 6.3 sq m	WINTER GARDEN AREA 189 sq ft, 17.5 sq m	WINTER GARDEN AREA 135 sq ft, 12.6 sq m	WINTER GARDEN AREA 136 sq ft, 12.6 sq m	WINTER GARDEN AREA 188 sq ft, 17.5 sq m
TOTAL AREA including W/G 449 sq ft, 41.7 sq m	TOTAL AREA including W/G 1057 sq ft, 98.2 sq m	TOTAL AREA including W/G 706 sq ft, 65.6 sq m	TOTAL AREA 704 sq ft, 65.4 sq m	TOTAL AREA including W/G 1055 sq ft, 98 sq m
LIVING/DINING 4100mm x 3610mm 13' 5" x 11' 10"	LIVING/DINING 6527mm x 3550mm 21' 5" x 11' 9"	LIVING/DINING/ KITCHEN 6037mm x 4464mm 19' 10" x 14' 8"	LIVING/DINING/ KITCHEN 6037mm x 4464mm 19' 10" x 14' 8"	LIVING/DINING 6560mm x 3580mm 21' 6" x 11' 9"
KITCHEN 2380mm x 2370mm 7' 10" x 7' 9"	KITCHEN 3026mm x 2197mm 9' 11" x 7' 2"	MASTER BEDROOM 3555mm x 3020mm 11' 8" x 9' 11"	MASTER BEDROOM 3555mm x 3020mm 11' 8" x 9' 11"	KITCHEN 2989mm x 2197mm 9' 10" x 7' 2"
WINTER GARDEN 3853mm x 1623mm 12' 8" x 5' 4"	MASTER BEDROOM 3760mm x 3040mm 12' 4" x 10' 0"	WINTER GARDEN 8378mm x 1500mm 27' 6" x 4' 11"	WINTER GARDEN 8378mm x 1500mm 27' 6" x 4' 11"	MASTER BEDROOM 3760mm x 3040mm 12' 4" x 10' 0"
	BEDROOM 2 3878mm x 3364mm 12' 9" x 11' 0"			BEDROOM 2 3843mm x 3364mm 12' 7" x 11' 0"
	WINTER GARDEN 10851mm x 1623mm 35' 7" x 5' 4"			WINTER GARDEN 10788mm x 1623mm 35' 5" x 5' 4"

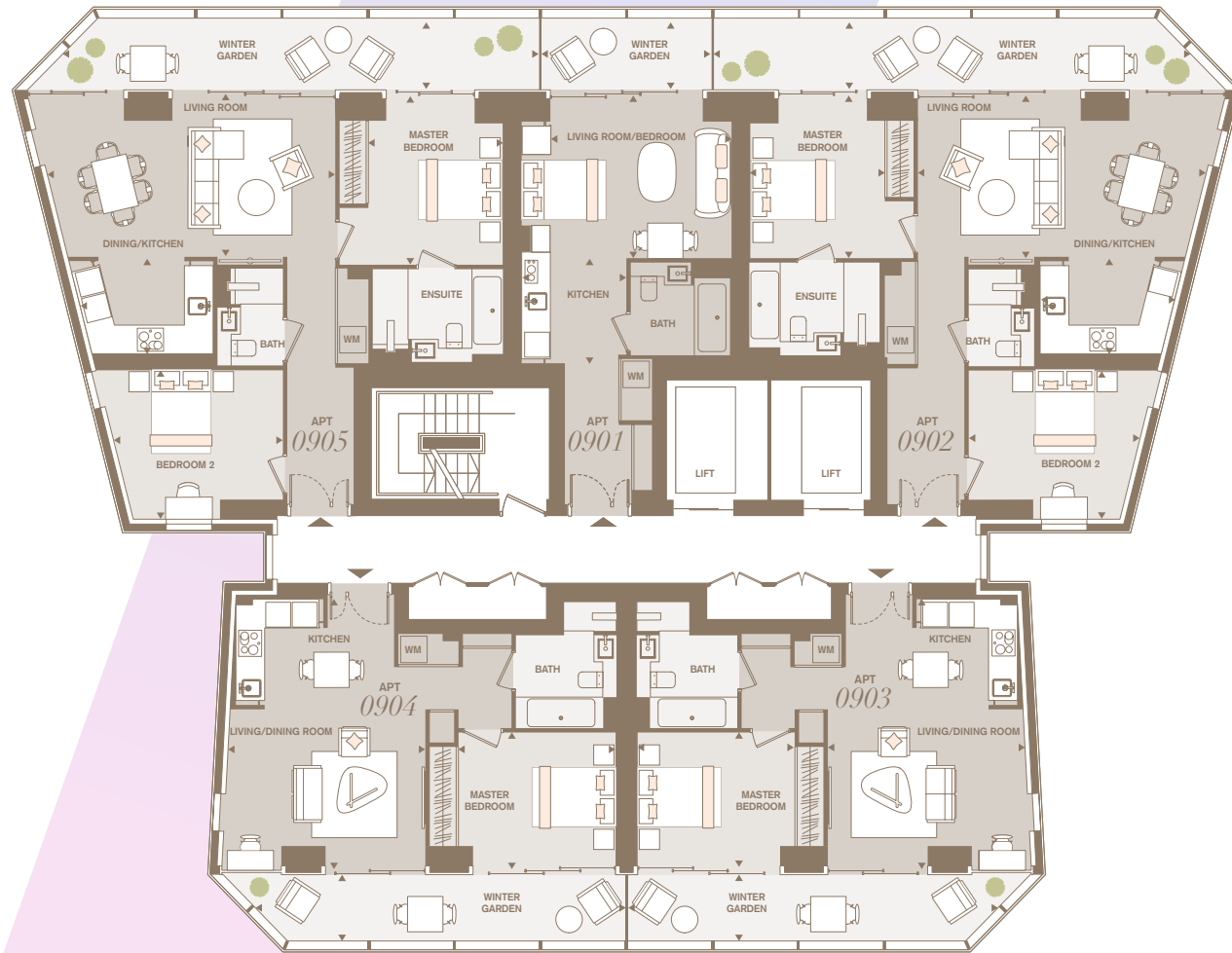


S.D.

R.T.

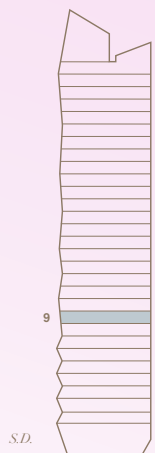
LEVEL 9

SOUTH DOCK
S.D.



RIVER THAMES
R.T.

APARTMENT 0901	APARTMENT 0902	APARTMENT 0903	APARTMENT 0904	APARTMENT 0905
INTERNAL AREA 382 sq ft, 35.5 sq m	INTERNAL AREA 869 sq ft, 80.7 sq m	INTERNAL AREA 571 sq ft, 53.0 sq m	INTERNAL AREA 568 sq ft, 52.8 sq m	INTERNAL AREA 866 sq ft, 80.5 sq m
WINTER GARDEN AREA 62 sq ft, 5.8 sq m	WINTER GARDEN AREA 175 sq ft, 16.3 sq m	WINTER GARDEN AREA 135 sq ft, 12.6 sq m	WINTER GARDEN AREA 136 sq ft, 12.6 sq m	WINTER GARDEN AREA 175 sq ft, 16.3 sq m
TOTAL AREA 444 sq ft, 41.3 sq m	TOTAL AREA including W/G 1044 sq ft, 97 sq m	TOTAL AREA including W/G 706 sq ft, 65.6 sq m	TOTAL AREA including W/G 704 sq ft, 65.4 sq m	TOTAL AREA including W/G 1041 sq ft, 96.7 sq m
LIVING/BEDROOM 4100mm x 3610mm 13' 5" x 11' 10"	LIVING/DINING 6527mm x 3550mm 21' 5" x 11' 9"	LIVING/DINING/ KITCHEN 6037mm x 4464mm 19' 10" x 14' 8"	LIVING/DINING/ KITCHEN 6037mm x 4464mm 19' 10" x 14' 8"	LIVING/DINING 6560mm x 3580mm 21' 6" x 11' 9"
KITCHEN 2380mm x 2370mm 7' 10" x 7' 9"	KITCHEN 3026mm x 2197mm 9' 11" x 7' 2"	MASTER BEDROOM 3555mm x 3020mm 11' 8" x 9' 11"	MASTER BEDROOM 3555mm x 3020mm 11' 8" x 9' 11"	KITCHEN 2989mm x 2197mm 9' 10" x 7' 2"
WINTER GARDEN 3853mm x 1500mm 12' 8" x 4' 11"	MASTER BEDROOM 3610mm x 3040mm 11' 10" x 10' 10"	WINTER GARDEN 8378mm x 1500mm 27' 6" x 4' 11"	WINTER GARDEN 8378mm x 1500mm 27' 6" x 4' 11"	MASTER BEDROOM 3760mm x 3040mm 12' 4" x 10' 0"
	BEDROOM 2 3878mm x 3364mm 12' 9" x 11' 0"			BEDROOM 2 3843mm x 3364mm 12' 7" x 11' 0"
	WINTER GARDEN 10851mm x 1500mm 35' 7" x 4' 11"			WINTER GARDEN 10850mm x 1500mm 35' 7" x 4' 11"



S.D. R.T.

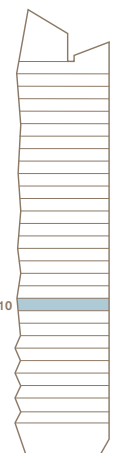
LEVEL 10

SOUTH DOCK
S.D.



RIVER THAMES
R.T.

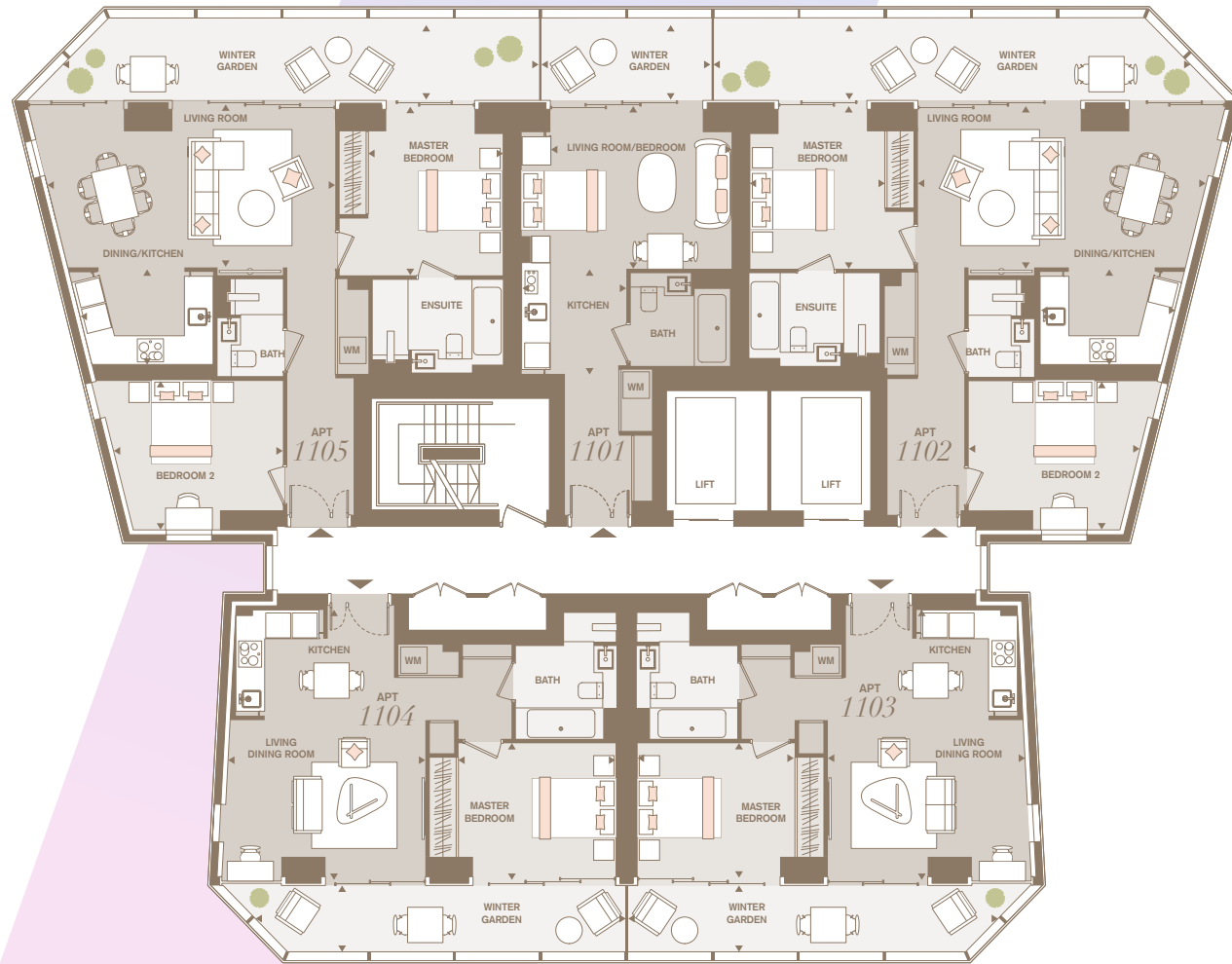
APARTMENT 1001	APARTMENT 1002	APARTMENT 1003	APARTMENT 1004	APARTMENT 1005
INTERNAL AREA 382 sq ft, 35.5 sq m	INTERNAL AREA 869 sq ft, 80.7 sq m	INTERNAL AREA 571 sq ft, 53 sq m	INTERNAL AREA 568 sq ft, 52.8 sq m	INTERNAL AREA 866 sq ft, 80.5 sq m
WINTER GARDEN AREA 73 sq ft, 6.7 sq m	WINTER GARDEN AREA 202 sq ft, 18.8 sq m	WINTER GARDEN AREA 135 sq ft, 12.6 sq m	WINTER GARDEN AREA 136 sq ft, 12.6 sq m	WINTER GARDEN AREA 202 sq ft, 18.8 sq m
TOTAL AREA including W/G 454 sq ft, 42.2 sq m	TOTAL AREA including W/G 1071 sq ft, 99.5 sq m	TOTAL AREA including W/G 706 sq ft, 65.4 sq m	TOTAL AREA including W/G 704 sq ft, 65.4 sq m	TOTAL AREA including W/G 1068 sq ft, 99.2 sq m
LIVING/BEDROOM 4100mm x 3610mm 13' 5" x 11' 10"	LIVING/DINING 6527mm x 3550mm 21' 5" x 11' 9"	LIVING/DINING/ KITCHEN 6037mm x 4464mm 19' 10" x 14' 8"	LIVING/DINING/ KITCHEN 6037mm x 4464mm 19' 10" x 14' 8"	LIVING/DINING 6560mm x 3580mm 21' 6" x 11' 9"
KITCHEN 2380mm x 2370mm 7' 10" x 7' 9"	KITCHEN 3026mm x 2197mm 9' 11" x 7' 2"	MASTER BEDROOM 3555mm x 3020mm 11' 8" x 9' 11"	MASTER BEDROOM 3555mm x 3020mm 11' 8" x 9' 11"	KITCHEN 2989mm x 2197mm 9' 10" x 7' 2"
WINTER GARDEN 3853mm x 1750mm 12' 8" x 5' 9"	MASTER BEDROOM 3610mm x 3040mm 11' 10" x 10' 10"	WINTER GARDEN 8378mm x 1500mm 27' 6" x 4' 11"	WINTER GARDEN 8378mm x 1500mm 27' 6" x 4' 11"	MASTER BEDROOM 3760mm x 3040mm 12' 4" x 10' 0"
	BEDROOM 2 3878mm x 3364mm 12' 9" x 11' 0"			BEDROOM 2 3843mm x 3364mm 12' 7" x 11' 0"
	WINTER GARDEN 10851mm x 1750mm 35' 7" x 5' 9"			WINTER GARDEN 10728mm x 1750mm 35' 2" x 5' 9"



S.D. R.T.

LEVEL 11

SOUTH DOCK
S.D.



RIVER THAMES
R.T.

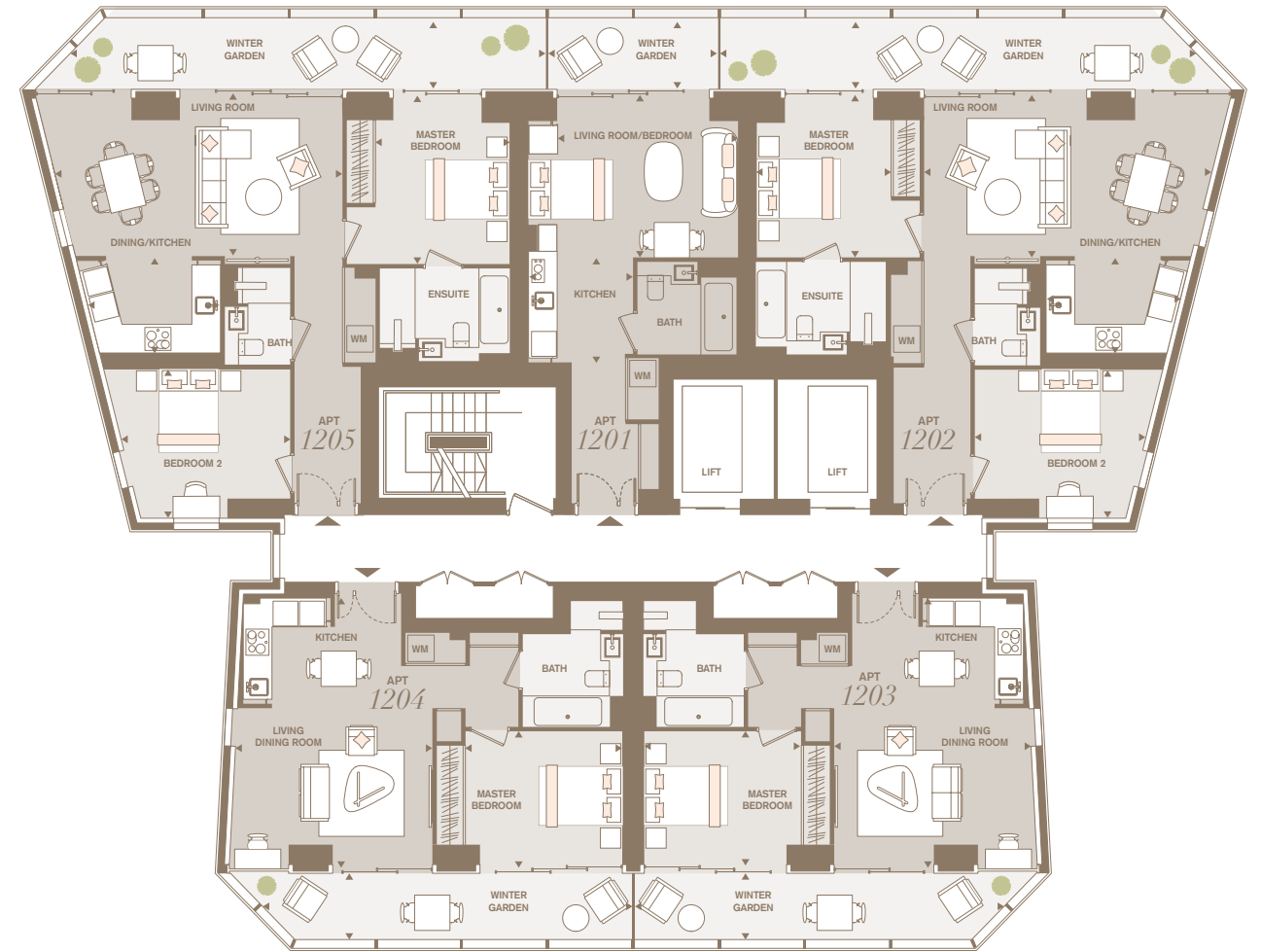
APARTMENT 1101	APARTMENT 1102	APARTMENT 1103	APARTMENT 1104	APARTMENT 1105
INTERNAL AREA 382 sq ft, 35.5 sq m	INTERNAL AREA 869 sq ft, 80.7 sq m	INTERNAL AREA 571 sq ft, 53.0 sq m	INTERNAL AREA 568 sq ft, 52.8 sq m	INTERNAL AREA 866 sq ft, 80.5 sq m
WINTER GARDEN AREA 78 sq ft, 7.2 sq m	WINTER GARDEN AREA 215 sq ft, 20 sq m	WINTER GARDEN AREA 135 sq ft, 12.6 sq m	WINTER GARDEN AREA 136 sq ft, 12.6 sq m	WINTER GARDEN AREA 215 sq ft, 20 sq m
TOTAL AREA including W/G 459 sq ft, 42.7 sq m	TOTAL AREA including W/G 1084 sq ft, 100.7 sq m	TOTAL AREA including W/G 706 sq ft, 65.6 sq m	TOTAL AREA including W/G 704 sq ft, 65.4 sq m	TOTAL AREA including W/G 1081 sq ft, 100.5 sq m
LIVING/BEDROOM 4100mm x 3610mm 13' 5" x 11' 10"	LIVING/DINING 6527mm x 3550mm 21' 5" x 11' 9"	LIVING/DINING/ KITCHEN 6037mm x 4464mm 19' 10" x 14' 8"	LIVING/DINING/ KITCHEN 6037mm x 4464mm 19' 10" x 14' 8"	LIVING/DINING 6560mm x 3580mm 21' 6" x 11' 9"
KITCHEN 2380mm x 2370mm 7' 10" x 7' 9"	KITCHEN 3026mm x 2197mm 9' 11" x 7' 2"	MASTER BEDROOM 3555mm x 3020mm 11' 8" x 9' 11"	MASTER BEDROOM 3555mm x 3020mm 11' 8" x 9' 11"	KITCHEN 2380mm x 2370mm 7' 10" x 7' 9"
WINTER GARDEN 3853mm x 1874mm 12' 8" x 6' 2"	MASTER BEDROOM 3610mm x 3040mm 11' 10" x 10' 10"	WINTER GARDEN 8378mm x 1500mm 27' 6" x 4' 11"	WINTER GARDEN 8378mm x 1500mm 27' 6" x 4' 11"	MASTER BEDROOM 3760mm x 3040mm 12' 4" x 10' 0"
	BEDROOM 2 3878mm x 3364mm 12' 9" x 11' 0"			BEDROOM 2 3843mm x 3364mm 12' 7" x 11' 0"
	WINTER GARDEN 10851mm x 1874mm 35' 7" x 6' 2"			WINTER GARDEN 10666mm x 1874mm 35' 0" x 6' 2"



S.D. R.T.

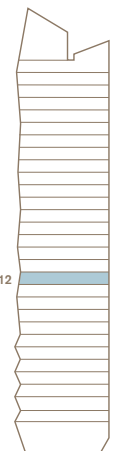
LEVEL 12

SOUTH DOCK
S.D.



RIVER THAMES
R.T.

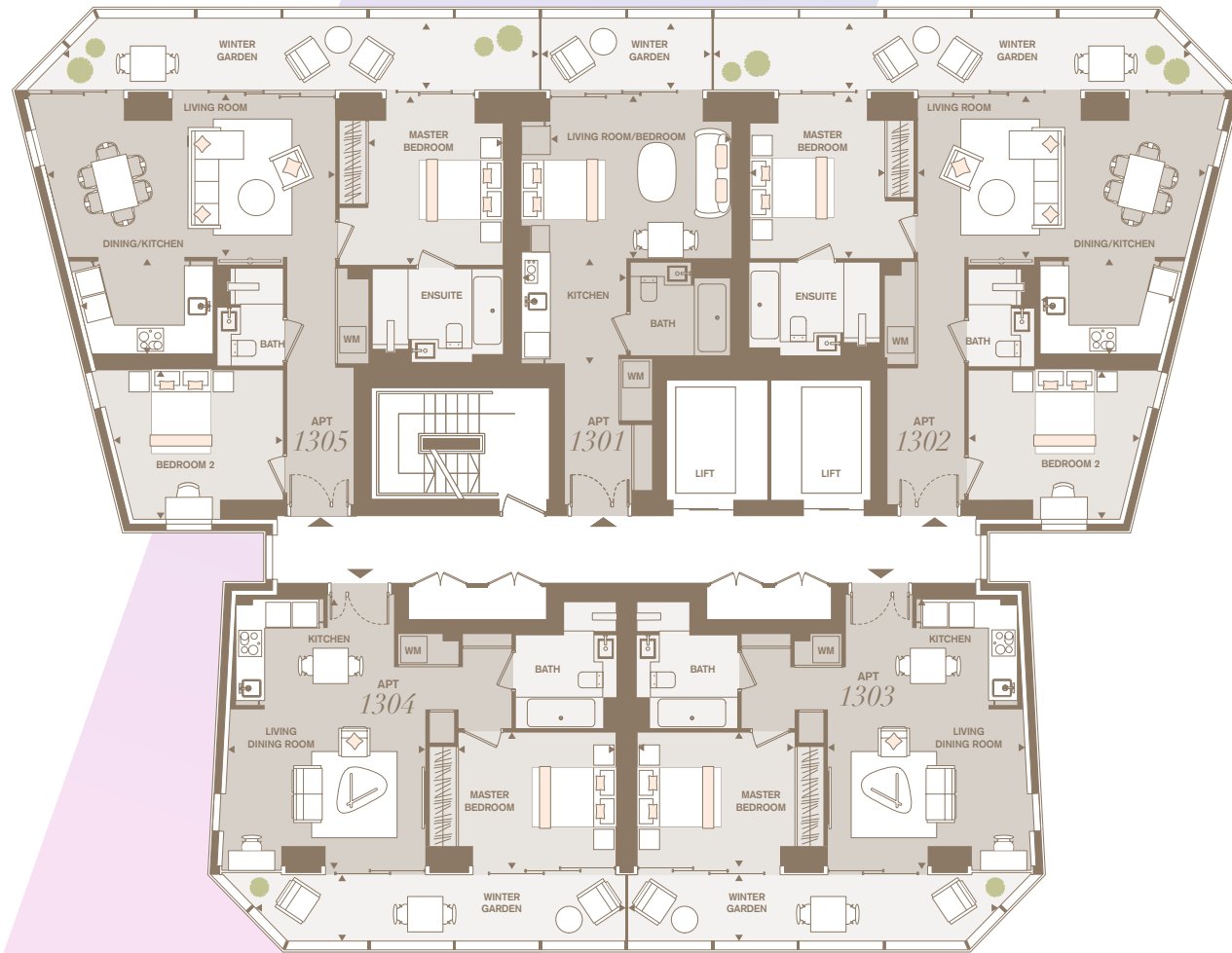
APARTMENT 1201	APARTMENT 1202	APARTMENT 1203	APARTMENT 1204	APARTMENT 1205
INTERNAL AREA 382 sq ft, 35.5 sq m	INTERNAL AREA 868 sq ft, 80.7 sq m	INTERNAL AREA 571 sq ft, 53.0 sq m	INTERNAL AREA 568 sq ft, 52.8 sq m	INTERNAL AREA 866 sq ft, 80.5 sq m
WINTER GARDEN AREA 67 sq ft, 6.3 sq m	WINTER GARDEN AREA 188 sq ft, 17.5 sq m	WINTER GARDEN AREA 135 sq ft, 12.6 sq m	WINTER GARDEN AREA 136 sq ft, 12.6 sq m	WINTER GARDEN AREA 188 sq ft, 17.5 sq m
TOTAL AREA including W/G 449 sq ft, 41.7 sq m	TOTAL AREA including W/G 1057 sq ft, 98.2 sq m	TOTAL AREA including W/G 706 sq ft, 65.6 sq m	TOTAL AREA including W/G 704 sq ft, 65.4 sq m	TOTAL AREA including W/G 1055 sq ft, 98.0 sq m
LIVING/BEDROOM 4100mm x 3610mm 13' 5" x 11' 10"	LIVING/DINING 6527mm x 3550mm 21' 5" x 11' 9"	LIVING/DINING/ KITCHEN 6037mm x 4464mm 19' 10" x 14' 8"	LIVING/DINING/ KITCHEN 6037mm x 4464mm 19' 10" x 14' 8"	LIVING/DINING 6560mm x 3580mm 21' 6" x 11' 9"
KITCHEN 2380mm x 2370mm 7' 10" x 7' 9"	KITCHEN 3026mm x 2197mm 9' 11" x 7' 2"	MASTER BEDROOM 3555mm x 3020mm 11' 8" x 9' 11"	MASTER BEDROOM 3555mm x 3020mm 11' 8" x 9' 11"	KITCHEN 2380mm x 2370mm 7' 10" x 7' 9"
WINTER GARDEN 3853mm x 1623mm 12' 8" x 5' 4"	MASTER BEDROOM 3610mm x 3040mm 11' 10" x 10' 10"	WINTER GARDEN 8378mm x 1500mm 27' 6" x 4' 11"	WINTER GARDEN 8378mm x 1500mm 27' 6" x 4' 11"	MASTER BEDROOM 3760mm x 3040mm 12' 4" x 10' 0"
	BEDROOM 2 3878mm x 3364mm 12' 9" x 11' 0"			BEDROOM 2 3843mm x 3364mm 12' 7" x 11' 0"
	WINTER GARDEN 10851mm x 1623mm 35' 7" x 5' 4"			WINTER GARDEN 10790mm x 1623mm 35' 5" x 5' 4"



S.D. R.T.

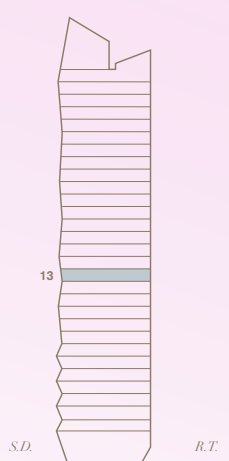
LEVEL 13

SOUTH DOCK
S.D.



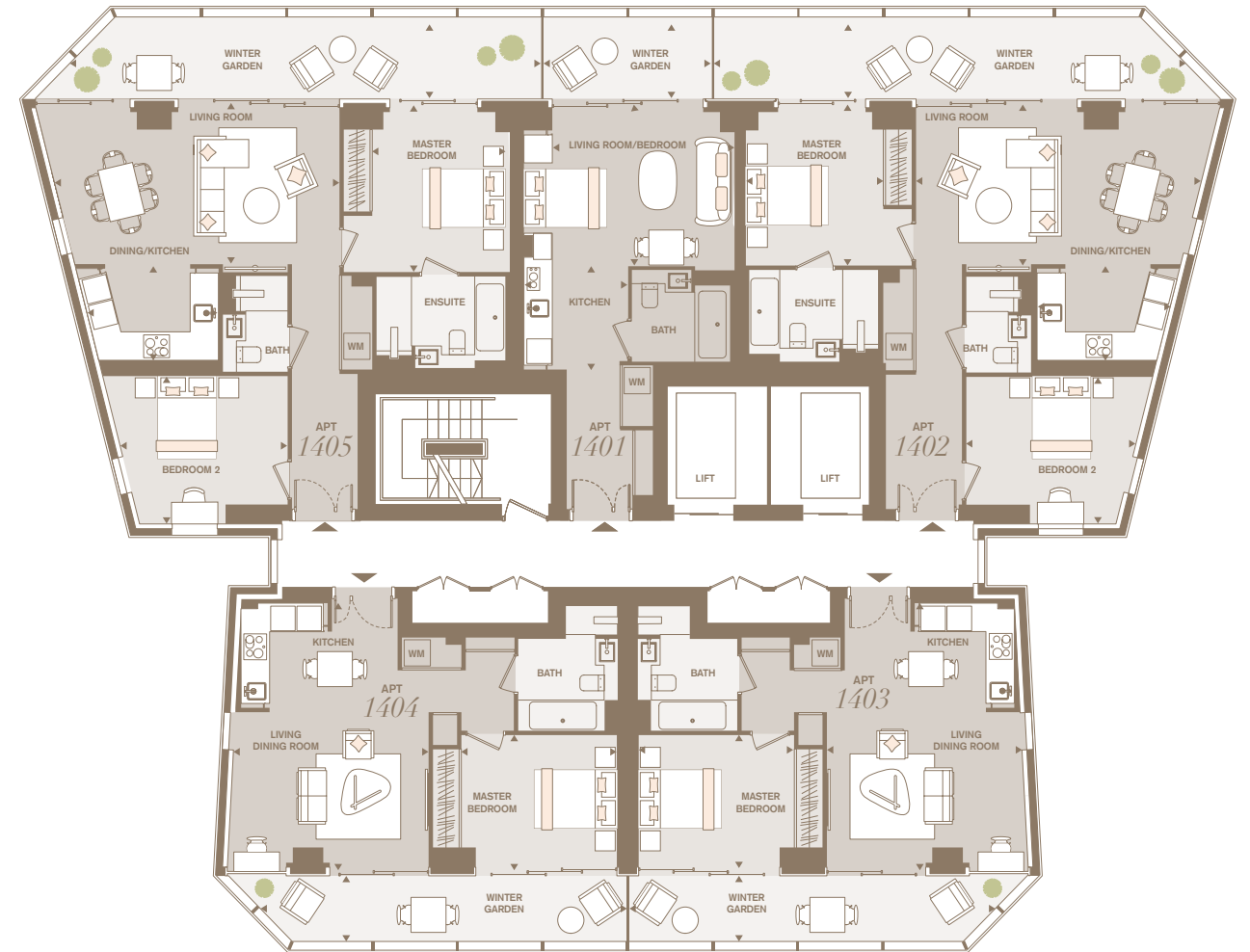
RIVER THAMES
R.T.

APARTMENT 1301	APARTMENT 1302	APARTMENT 1303	APARTMENT 1304	APARTMENT 1305
INTERNAL AREA 382 sq ft, 35.5 sq m	INTERNAL AREA 868 sq ft, 80.7 sq m	INTERNAL AREA 571 sq ft, 53.0 sq m	INTERNAL AREA 568 sq ft, 52.8 sq m	INTERNAL AREA 866 sq ft, 80.5 sq m
WINTER GARDEN AREA 62 sq ft, 5.8 sq m	WINTER GARDEN AREA 175 sq ft, 16.3 sq m	WINTER GARDEN AREA 135 sq ft, 12.6 sq m	WINTER GARDEN AREA 136 sq ft, 12.6 sq m	WINTER GARDEN AREA 175 sq ft, 16.3 sq m
TOTAL AREA including W/G 444 sq ft, 41.2 sq m	TOTAL AREA including W/G 1043 sq ft, 96.9 sq m	TOTAL AREA including W/G 706 sq ft, 65.6 sq m	TOTAL AREA including W/G 704 sq ft, 65.4 sq m	TOTAL AREA including W/G 1041 sq ft, 96.7 sq m
LIVING/BEDROOM 4100mm x 3610mm 13' 5" x 11' 10"	LIVING/DINING 6527mm x 3550mm 21' 5" x 11' 9"	LIVING/DINING/ KITCHEN 6037mm x 4464mm 19' 10" x 14' 8"	LIVING/DINING/ KITCHEN 6037mm x 4464mm 19' 10" x 14' 8"	LIVING/DINING 6560mm x 3580mm 21' 6" x 11' 9"
KITCHEN 2380mm x 2370mm 7' 10" x 7' 9"	KITCHEN 3026mm x 2197mm 9' 11" x 7' 2"	MASTER BEDROOM 3555mm x 3020mm 11' 8" x 9' 11"	MASTER BEDROOM 3555mm x 3020mm 11' 8" x 9' 11"	KITCHEN 2989mm x 2197mm 9' 10" x 7' 2"
WINTER GARDEN 3853mm x 1500mm 12' 8" x 4' 11"	MASTER BEDROOM 3610mm x 3040mm 11' 10" x 10' 10"	WINTER GARDEN 8378mm x 1500mm 27' 6" x 4' 11"	WINTER GARDEN 8378mm x 1500mm 27' 6" x 4' 11"	MASTER BEDROOM 3760mm x 3040mm 12' 4" x 10' 0"
	BEDROOM 2 3878mm x 3364mm 12' 9" x 11' 0"			BEDROOM 2 3843mm x 3364mm 12' 7" x 11' 0"
	WINTER GARDEN 10851mm x 1500mm 35' 7" x 4' 11"			WINTER GARDEN 10850mm x 1500mm 35' 7" x 4' 11"



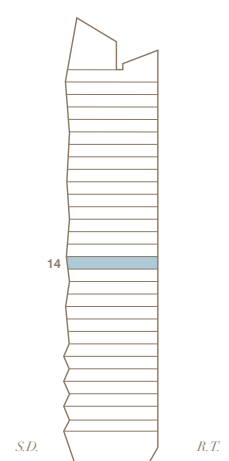
LEVEL 14

SOUTH DOCK
S.D.



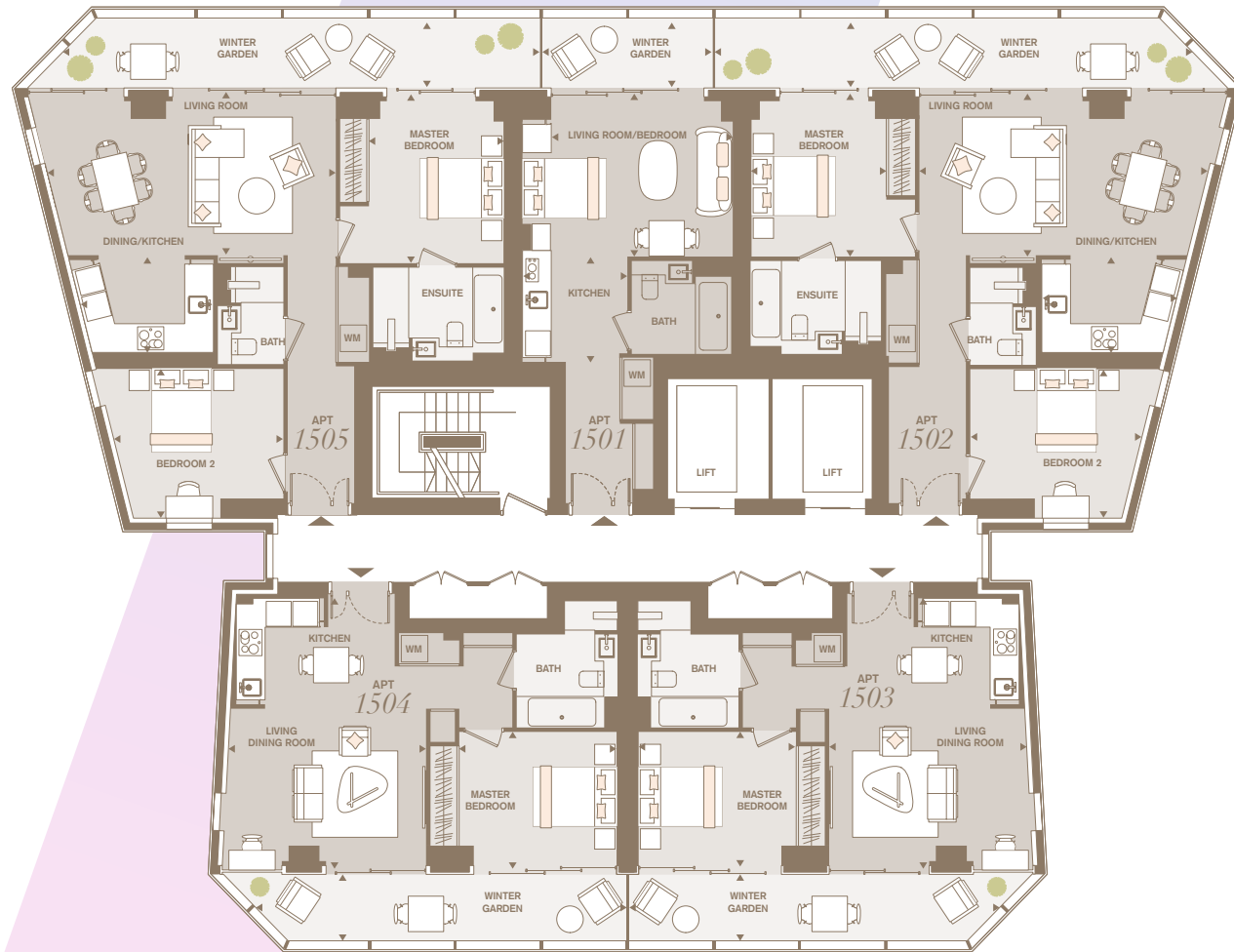
RIVER THAMES
R.T.

APARTMENT 1401	APARTMENT 1402	APARTMENT 1403	APARTMENT 1404	APARTMENT 1405
INTERNAL AREA 385 sq ft, 35.8 sq m	INTERNAL AREA 875 sq ft, 81.3 sq m	INTERNAL AREA 571 sq ft, 53.0 sq m	INTERNAL AREA 568 sq ft, 52.8 sq m	INTERNAL AREA 870 sq ft, 80.8 sq m
WINTER GARDEN AREA 73 sq ft, 6.7 sq m	WINTER GARDEN AREA 202 sq ft, 18.8 sq m	WINTER GARDEN AREA 135 sq ft, 12.6 sq m	WINTER GARDEN AREA 136 sq ft, 12.6 sq m	WINTER GARDEN AREA 202 sq ft, 18.8 sq m
TOTAL AREA including W/G 458 sq ft, 42.5 sq m	TOTAL AREA including W/G 1077 sq ft, 100 sq m	TOTAL AREA including W/G 706 sq ft, 65.6 sq m	TOTAL AREA including W/G 704 sq ft, 65.4 sq m	TOTAL AREA including W/G 1072 sq ft, 99.6 sq m
LIVING/BEDROOM 4100mm x 3610mm 13' 5" x 11' 10"	LIVING/DINING 6527mm x 3550mm 21' 5" x 11' 9"	LIVING/DINING/ KITCHEN 6037mm x 4464mm 19' 10" x 14' 8"	LIVING/DINING/ KITCHEN 6037mm x 4464mm 19' 10" x 14' 8"	LIVING/DINING 6560mm x 3580mm 21' 6" x 11' 9"
KITCHEN 2380mm x 2370mm 7' 10" x 7' 9"	KITCHEN 3026mm x 2197mm 9' 11" x 7' 2"	MASTER BEDROOM 3555mm x 3020mm 11' 8" x 9' 11"	MASTER BEDROOM 3555mm x 3020mm 11' 8" x 9' 11"	KITCHEN 2989mm x 2197mm 9' 10" x 7' 2"
WINTER GARDEN 3853mm x 1750mm 12' 8" x 5' 9"	MASTER BEDROOM 3610mm x 3040mm 11' 10" x 10' 10"	WINTER GARDEN 8378mm x 1500mm 27' 6" x 4' 11"	WINTER GARDEN 8378mm x 1500mm 27' 6" x 4' 11"	MASTER BEDROOM 3760mm x 3040mm 12' 4" x 10' 0"
	BEDROOM 2 3878mm x 3364mm 12' 9" x 11' 0"			BEDROOM 3843mm x 3364mm 12' 7" x 11' 0"
	WINTER GARDEN 10851mm x 1750mm 35' 7" x 5' 9"			WINTER GARDEN 10728mm x 1750mm 35' 2" x 4' 11"



LEVEL 15

SOUTH DOCK
S.D.



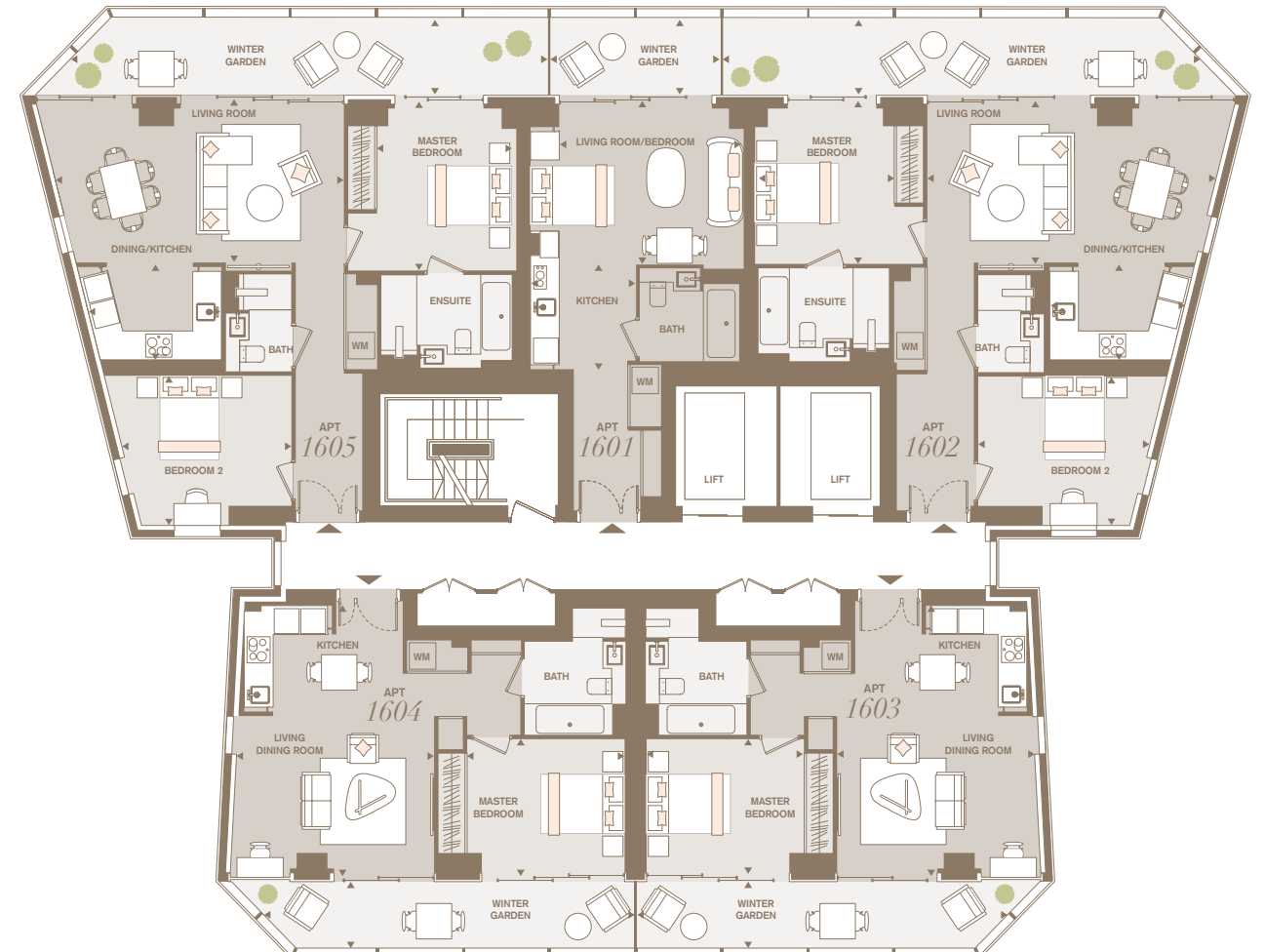
RIVER THAMES
R.T.

APARTMENT 1501	APARTMENT 1502	APARTMENT 1503	APARTMENT 1504	APARTMENT 1505
INTERNAL AREA 385 sq ft, 35.8 sq m	INTERNAL AREA 875 sq ft, 81.3 sq m	INTERNAL AREA 571 sq ft, 53.0 sq m	INTERNAL AREA 568 sq ft, 52.8 sq m	INTERNAL AREA 870 sq ft, 80.8 sq m
WINTER GARDEN AREA 79 sq ft, 7.4 sq m	WINTER GARDEN AREA 219 sq ft, 20.4 sq m	WINTER GARDEN AREA 135 sq ft, 12.6 sq m	WINTER GARDEN AREA 136 sq ft, 12.6 sq m	WINTER GARDEN AREA 220 sq ft, 20.4 sq m
TOTAL AREA including W/G 465 sq ft, 43.2 sq m	TOTAL AREA including W/G 1094 sq ft, 101.7 sq m	TOTAL AREA including W/G 706 sq ft, 65.6 sq m	TOTAL AREA including W/G 704 sq ft, 65.4 sq m	TOTAL AREA including W/G 1090 sq ft, 101.2 sq m
LIVING/BEDROOM 4100mm x 3610mm 13' 5" x 11' 10"	LIVING/DINING 6527mm x 3550mm 21' 5" x 11' 9"	LIVING/DINING KITCHEN 6037mm x 4464mm 19' 10" x 14' 8"	LIVING/DINING/ KITCHEN 6037mm x 4464mm 19' 10" x 14' 8"	LIVING/DINING 6560mm x 3580mm 21' 6" x 11' 9"
KITCHEN 2380mm x 2370mm 7' 10" x 7' 9"	KITCHEN 3026mm x 2197mm 9' 11" x 7' 2"	MASTER BEDROOM 3555mm x 3020mm 11' 8" x 9' 11"	MASTER BEDROOM 3555mm x 3020mm 11' 8" x 9' 11"	KITCHEN 2989mm x 2197mm 9' 10" x 7' 2"
WINTER GARDEN 3853mm x 1916mm 12' 8" x 6' 3"	MASTER BEDROOM 3610mm x 3040mm 11' 10" x 10' 10"	WINTER GARDEN 8378mm x 1500mm 27' 6" x 4' 11"	WINTER GARDEN 8378mm x 1500mm 27' 6" x 4' 11"	MASTER BEDROOM 3760mm x 3040mm 12' 4" x 10' 0"
	BEDROOM 2 3878mm x 3364mm 12' 9" x 11' 0"			BEDROOM 2 3843mm x 3364mm 12' 7" x 11' 0"
	WINTER GARDEN 10851mm x 1916mm 35' 7" x 6' 3"			WINTER GARDEN 10647mm x 1916mm 34' 11" x 6' 3"



LEVEL 16

SOUTH DOCK
S.D.



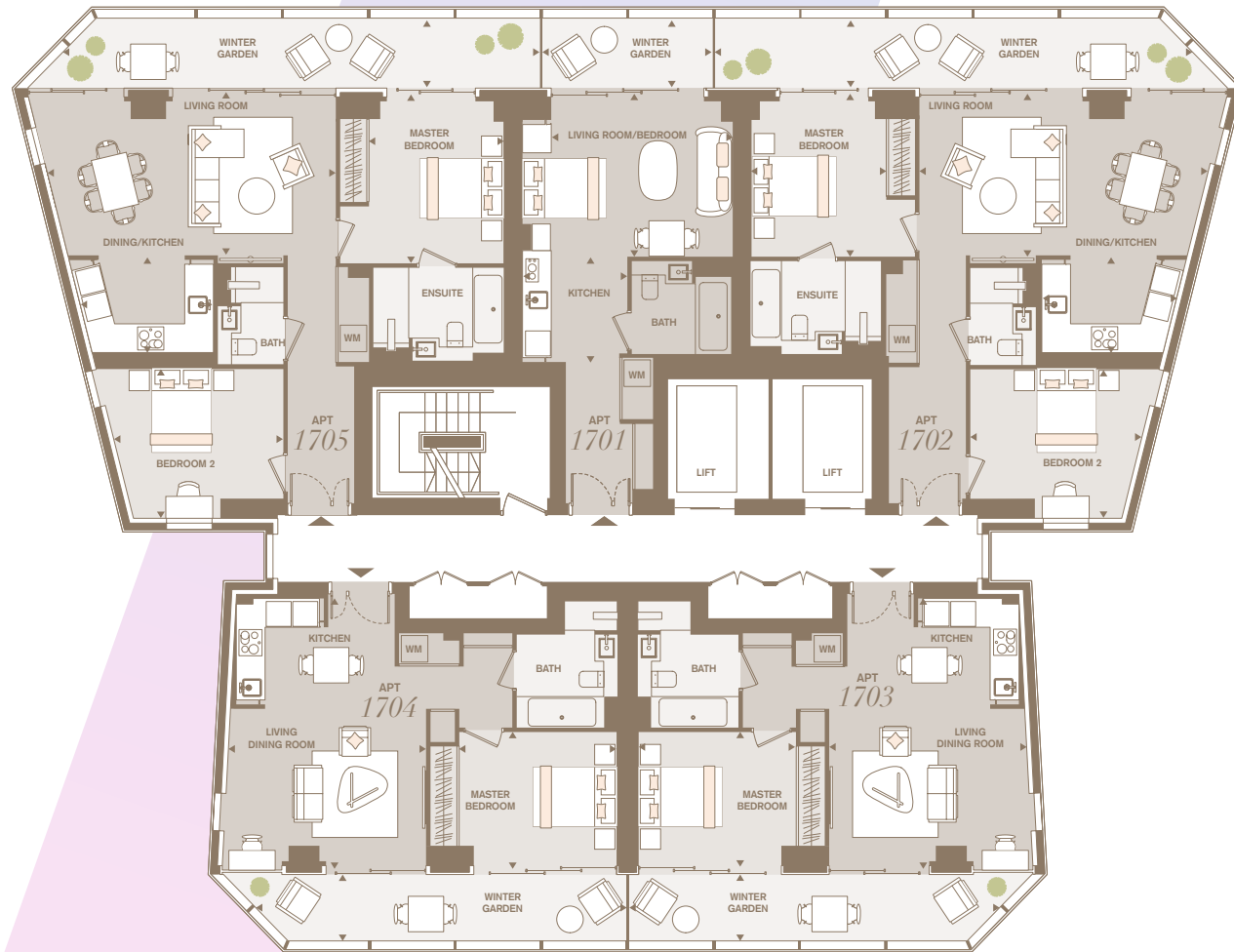
RIVER THAMES
R.T.

APARTMENT 1601	APARTMENT 1602	APARTMENT 1603	APARTMENT 1604	APARTMENT 1605
INTERNAL AREA 385 sq ft, 35.8 sq m	INTERNAL AREA 875 sq ft, 81.3 sq m	INTERNAL AREA 571 sq ft, 53.0 sq m	INTERNAL AREA 568 sq ft, 52.8 sq m	INTERNAL AREA 870 sq ft, 80.8 sq m
WINTER GARDEN AREA 73 sq ft, 6.7 sq m	WINTER GARDEN AREA 202 sq ft, 18.8 sq m	WINTER GARDEN AREA 135 sq ft, 12.6 sq m	WINTER GARDEN AREA 136 sq ft, 12.6 sq m	WINTER GARDEN AREA 202 sq ft, 18.8 sq m
TOTAL AREA including W/G 458 sq ft, 42.5 sq m	TOTAL AREA including W/G 1077 sq ft, 100 sq m	TOTAL AREA including W/G 706 sq ft, 65.6 sq m	TOTAL AREA including W/G 704 sq ft, 65.4 sq m	TOTAL AREA including W/G 1072 sq ft, 99.6 sq m
LIVING/DINING 4100mm x 3610mm 13' 5" x 11' 10"	LIVING/DINING 6527mm x 3550mm 21' 5" x 11' 9"	LIVING/DINING/ KITCHEN 6037mm x 4464mm 19' 10" x 14' 8"	LIVING/DINING/ KITCHEN 6037mm x 4464mm 19' 10" x 14' 8"	LIVING/DINING 6560mm x 3580mm 21' 6" x 11' 9"
KITCHEN 2380mm x 2370mm 7' 10" x 7' 9"	KITCHEN 3026mm x 2197mm 9' 11" x 7' 2"	MASTER BEDROOM 3555mm x 3020mm 11' 8" x 9' 11"	MASTER BEDROOM 3555mm x 3020mm 11' 8" x 9' 11"	KITCHEN 2989mm x 2197mm 9' 10" x 7' 2"
WINTER GARDEN 3853mm x 1750mm 12' 8" x 5' 9"	MASTER BEDROOM 3610mm x 3040mm 11' 10" x 10' 10"	WINTER GARDEN 8378mm x 1500mm 27' 6" x 4' 11"	WINTER GARDEN 8378mm x 1500mm 27' 6" x 4' 11"	MASTER BEDROOM 3760mm x 3040mm 12' 4" x 10' 0"
	BEDROOM 2 3878mm x 3364mm 12' 9" x 11' 0"			BEDROOM 2 3843mm x 3364mm 12' 7" x 11' 0"
	WINTER GARDEN 10851mm x 1750mm 35' 7" x 5' 9"			WINTER GARDEN 10728mm x 1750mm 35' 2" x 5' 9"



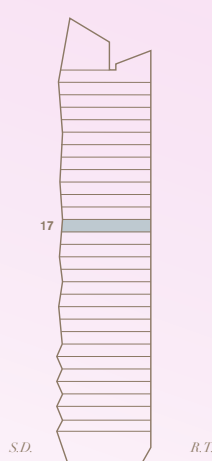
LEVEL 17

SOUTH DOCK
S.D.



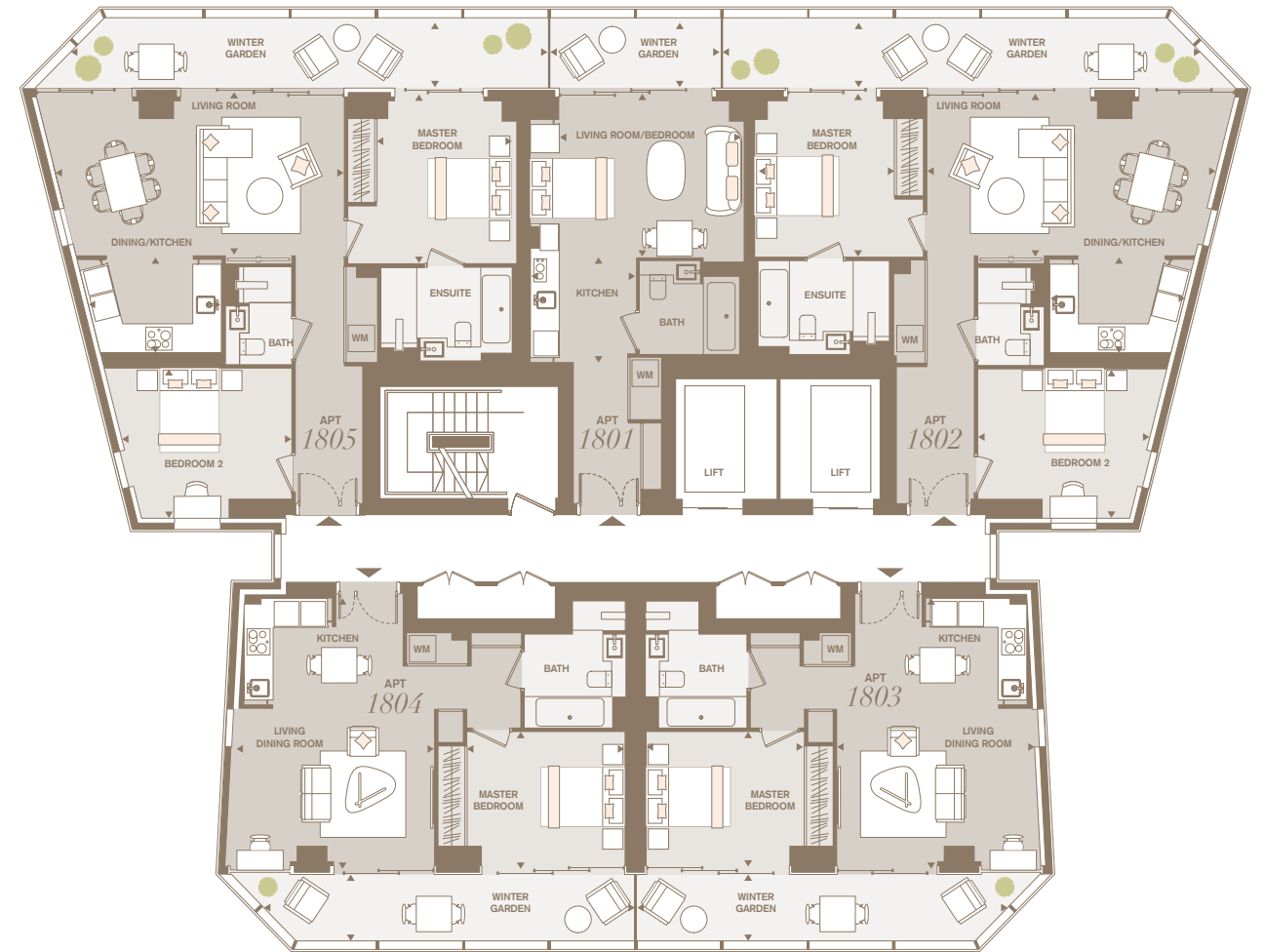
RIVER THAMES
R.T.

APARTMENT 1701	APARTMENT 1702	APARTMENT 1703	APARTMENT 1704	APARTMENT 1705
INTERNAL AREA 385 sq ft, 35.8 sq m	INTERNAL AREA 875 sq ft, 81.3 sq m	INTERNAL AREA 571 sq ft, 53.0 sq m	INTERNAL AREA 568 sq ft, 52.8 sq m	INTERNAL AREA 870 sq ft, 80.8 sq m
WINTER GARDEN AREA 66 sq ft, 6.1 sq m	WINTER GARDEN AREA 184 sq ft, 17.1 sq m	WINTER GARDEN AREA 135 sq ft, 12.6 sq m	WINTER GARDEN AREA 136 sq ft, 12.6 sq m	WINTER GARDEN AREA 184 sq ft, 17.1 sq m
TOTAL AREA including W/G 451 sq ft, 41.9 sq m	TOTAL AREA including W/G 1059 sq ft, 98.4 sq m	TOTAL AREA including W/G 706 sq ft, 65.6 sq m	TOTAL AREA including W/G 704 sq ft, 65.4 sq m	TOTAL AREA including W/G 1054 sq ft, 97.9 sq m
LIVING/BEDROOM 4100mm x 3610mm 13' 5" x 11' 10"	LIVING/DINING 6527mm x 3550mm 21' 5" x 11' 9"	LIVING/DINING/ KITCHEN 6037mm x 4464mm 19' 10" x 14' 8"	LIVING/DINING/ KITCHEN 6037mm x 4464mm 19' 10" x 14' 8"	LIVING/DINING 6560mm x 3580mm 21' 6" x 11' 9"
KITCHEN 2380mm x 2370mm 7' 10" x 7' 9"	KITCHEN 3026mm x 2197mm 9' 11" x 7' 2"	MASTER BEDROOM 3555mm x 3020mm 11' 8" x 9' 11"	MASTER BEDROOM 3555mm x 3020mm 11' 8" x 9' 11"	KITCHEN 2389mm x 2197mm 9' 10" x 7' 2"
WINTER GARDEN 3853mm x 1582mm 12' 8" x 5' 2"	MASTER BEDROOM 3610mm x 3040mm 11' 10" x 10' 10"	WINTER GARDEN 8378mm x 1500mm 27' 6" x 4' 11"	WINTER GARDEN 8378mm x 1500mm 27' 6" x 4' 11"	MASTER BEDROOM 3760mm x 3040mm 12' 4" x 10' 0"
	BEDROOM 2 3878mm x 3364mm 12' 9" x 11' 0"			BEDROOM 2 3843mm x 3364mm 12' 7" x 11' 0"
	WINTER GARDEN 10851mm x 1582mm 35' 7" x 5' 2"			WINTER GARDEN 10810mm x 1582mm 35' 6" x 5' 2"



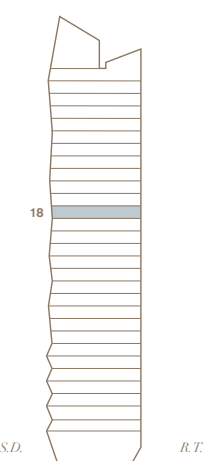
LEVEL 18

SOUTH DOCK
S.D.



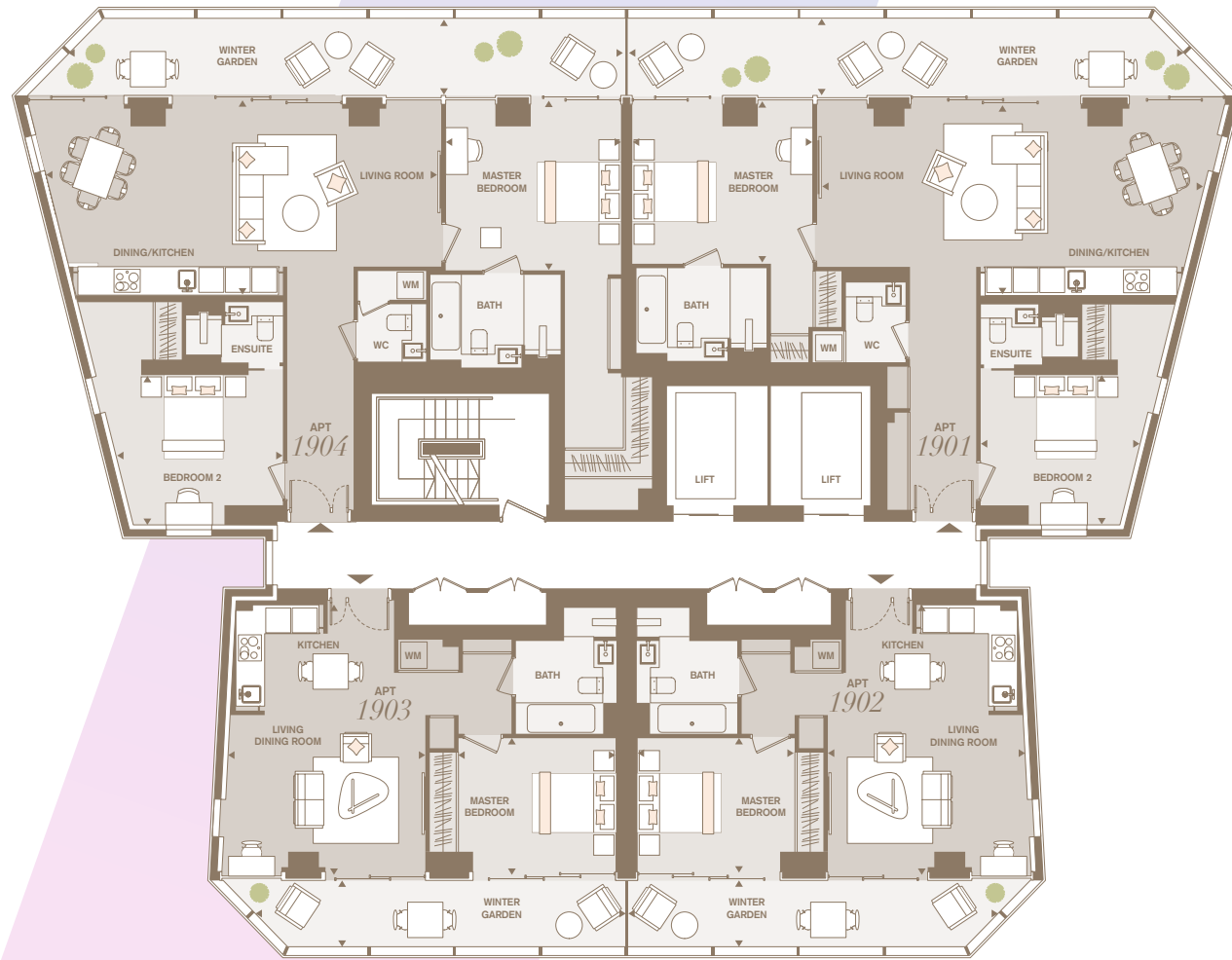
RIVER THAMES
R.T.

APARTMENT 1801	APARTMENT 1802	APARTMENT 1803	APARTMENT 1804	APARTMENT 1805
INTERNAL AREA 385 sq ft, 35.8 sq m	INTERNAL AREA 875 sq ft, 81.3 sq m	INTERNAL AREA 571 sq ft, 53.0 sq m	INTERNAL AREA 568 sq ft, 52.8 sq m	INTERNAL AREA 870 sq ft, 80.8 sq m
WINTER GARDEN AREA 62 sq ft, 5.8 sq m	WINTER GARDEN AREA 175 sq ft, 16.3 sq m	WINTER GARDEN AREA 135 sq ft, 12.6 sq m	WINTER GARDEN AREA 136 sq ft, 12.6 sq m	WINTER GARDEN AREA 175 sq ft, 16.3 sq m
TOTAL AREA including W/G 447 sq ft, 41.6 sq m	TOTAL AREA including W/G 1050 sq ft, 97.5 sq m	TOTAL AREA including W/G 706 sq ft, 65.6 sq m	TOTAL AREA including W/G 704 sq ft, 65.4 sq m	TOTAL AREA including W/G 1045 sq ft, 97.1 sq m
LIVING/BEDROOM 4100mm x 3610mm 13' 5" x 11' 10"	LIVING/DINING 6527mm x 3550mm 21' 5" x 11' 9"	LIVING/DINING/ KITCHEN 6037mm x 4464mm 19' 10" x 14' 8"	LIVING/DINING/ KITCHEN 6037mm x 4464mm 19' 10" x 14' 8"	LIVING/DINING 6560mm x 3580mm 21' 6" x 11' 9"
KITCHEN 2380mm x 2370mm 7' 10" x 7' 9"	KITCHEN 3026mm x 2197mm 9' 11" x 7' 2"	MASTER BEDROOM 3555mm x 3020mm 11' 8" x 9' 11"	MASTER BEDROOM 3555mm x 3020mm 11' 8" x 9' 11"	KITCHEN 2389mm x 2197mm 9' 10" x 7' 2"
WINTER GARDEN 3853mm x 1500mm 12' 8" x 4' 11"	MASTER BEDROOM 3610mm x 3040mm 11' 10" x 10' 10"	WINTER GARDEN 8378mm x 1500mm 27' 6" x 4' 11"	WINTER GARDEN 8378mm x 1500mm 27' 6" x 4' 11"	MASTER BEDROOM 3760mm x 3040mm 12' 4" x 10' 0"
	BEDROOM 2 3878mm x 3364mm 12' 9" x 11' 0"			BEDROOM 2 3843mm x 3364mm 12' 7" x 11' 0"
	WINTER GARDEN 10851mm x 1500mm 35' 7" x 4' 11"			WINTER GARDEN 10869mm x 1500mm 35' 8" x 4' 11"



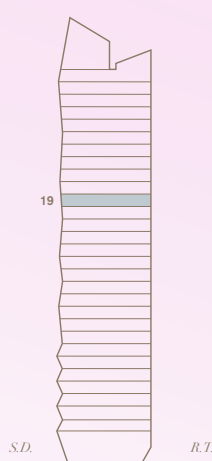
LEVEL 19

SOUTH DOCK
S.D.



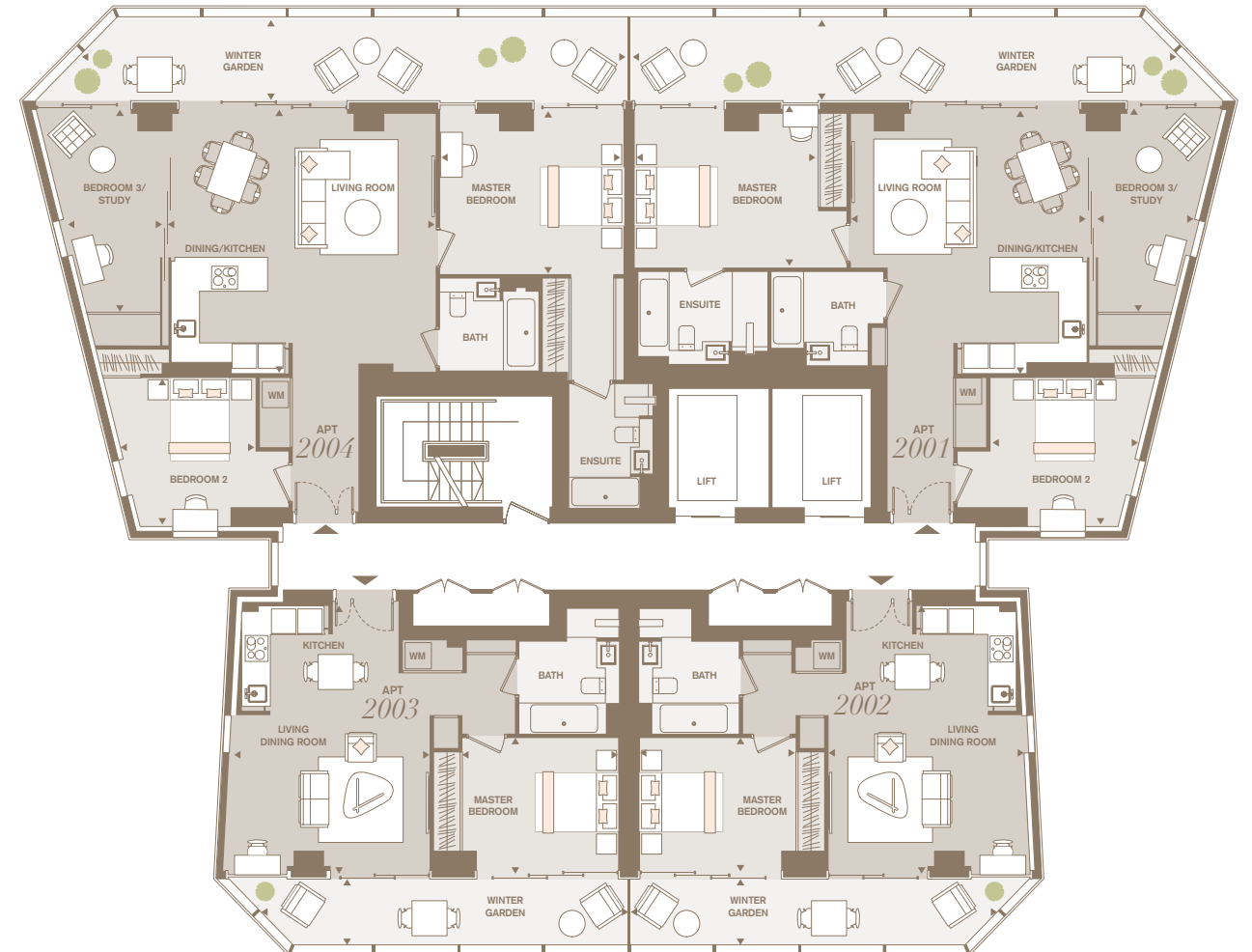
RIVER THAMES
R.T.

APARTMENT 1901	APARTMENT 1902	APARTMENT 1903	APARTMENT 1904
INTERNAL AREA 1049 sq ft, 97.4 sq m	INTERNAL AREA 571 sq ft, 53.0 sq m	INTERNAL AREA 568 sq ft, 52.8 sq m	INTERNAL AREA 1119 sq ft, 104.0 sq m
WINTER GARDEN AREA 221 sq ft, 20.5 sq m	WINTER GARDEN AREA 135 sq ft, 12.6 sq m	WINTER GARDEN AREA 136 sq ft, 12.6 sq m	WINTER GARDEN AREA 221 sq ft, 20.5 sq m
TOTAL AREA including W/G 1270 sq ft, 118.0 sq m	TOTAL AREA including W/G 706 sq ft, 65.6 sq m	TOTAL AREA including W/G 704 sq ft, 65.4 sq m	TOTAL AREA including W/G 1340 sq ft, 124.5 sq m
LIVING/DINING/KITCHEN 8807mm x 4430mm 28' 11" x 14' 6"	LIVING/DINING/KITCHEN 6037mm x 4464mm 19' 10" x 14' 8"	LIVING/DINING/KITCHEN 6037mm x 4464mm 19' 10" x 14' 8"	LIVING/DINING/KITCHEN 8927mm x 4334mm 29' 3" x 14' 3"
MASTER BEDROOM 4087mm x 3610mm 13' 5" x 11' 10"	MASTER BEDROOM 3555mm x 3020mm 11' 8" x 9' 11"	MASTER BEDROOM 3555mm x 3020mm 11' 8" x 9' 11"	MASTER BEDROOM 3967mm x 3760mm 13' 0" x 12' 4"
BEDROOM 2 3608mm x 3390mm 11' 10" x 11' 1"	WINTER GARDEN 8378mm x 1500mm 27' 6" x 4' 11"	WINTER GARDEN 8378mm x 1500mm 27' 6" x 4' 11"	BEDROOM 2 3843mm x 3390mm 12' 7" x 11' 1"
WINTER GARDEN 12739mm x 1669mm 41' 10" x 5' 6"			WINTER GARDEN 12739mm x 1669mm 41' 10" x 5' 6"



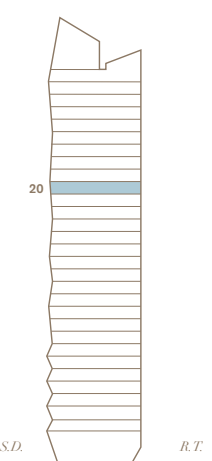
LEVEL 20

SOUTH DOCK
S.D.



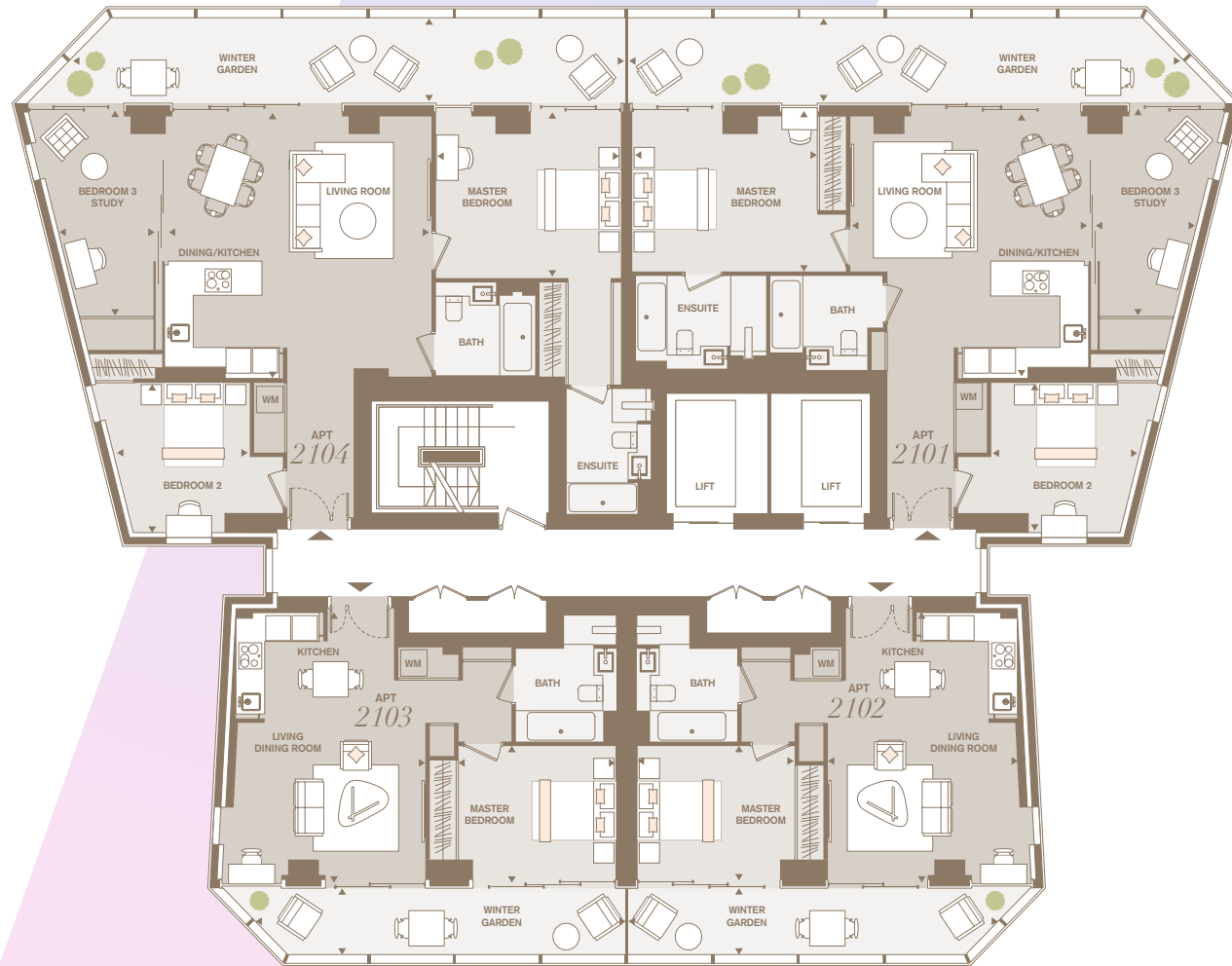
RIVER THAMES
R.T.

APARTMENT 2001	APARTMENT 2002	APARTMENT 2003	APARTMENT 2004
INTERNAL AREA 1046 sq ft, 97.2 sq m	INTERNAL AREA 571 sq ft, 53.0 sq m	INTERNAL AREA 568 sq ft, 52.8 sq m	INTERNAL AREA 1121 sq ft, 104.2 sq m
WINTER GARDEN AREA 242 sq ft, 22.5 sq m	WINTER GARDEN AREA 135 sq ft, 12.6 sq m	WINTER GARDEN AREA 136 sq ft, 12.6 sq m	WINTER GARDEN AREA 242 sq ft, 22.5 sq m
TOTAL AREA including W/G 1289 sq ft, 119.7 sq m	TOTAL AREA including W/G 706 sq ft, 65.6 sq m	TOTAL AREA including W/G 704 sq ft, 65.4 sq m	TOTAL AREA including W/G 1364 sq ft, 126.7 sq m
LIVING/DINING/KITCHEN 6030mm x 5445mm 19' 9" x 17' 10"	LIVING/DINING/KITCHEN 6037mm x 4464mm 19' 10" x 14' 8"	LIVING/DINING/KITCHEN 6037mm x 4464mm 19' 10" x 14' 8"	LIVING/DINING KITCHEN 6045mm x 6030mm 19' 10" x 19' 9"
MASTER BEDROOM 4187mm x 3610mm 13' 9" x 11' 10"	MASTER BEDROOM 3555mm x 3020mm 11' 8" x 9' 11"	MASTER BEDROOM 3555mm x 3020mm 11' 8" x 9' 11"	MASTER BEDROOM 4187mm x 3760mm 13' 9" x 12' 4"
BEDROOM 2 3390mm x 3370mm 11' 1" x 11' 1"	WINTER GARDEN 8378mm x 1500mm 27' 6" x 4' 11"	WINTER GARDEN 8378mm x 1500mm 27' 6" x 4' 11"	BEDROOM 2 3390mm x 3093mm 11' 1" x 10' 2"
BEDROOM 3/STUDY 4734mm x 2205mm 15' 6" x 7' 3"			BEDROOM 3/STUDY 4634mm x 2205mm 15' 2" x 7' 3"
WINTER GARDEN 12658mm x 1833mm 41' 6" x 6' 0"			WINTER GARDEN 12658mm x 1833mm 41' 6" x 6' 0"



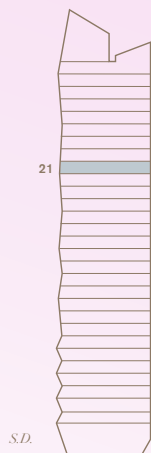
LEVEL 21

SOUTH DOCK
S.D.



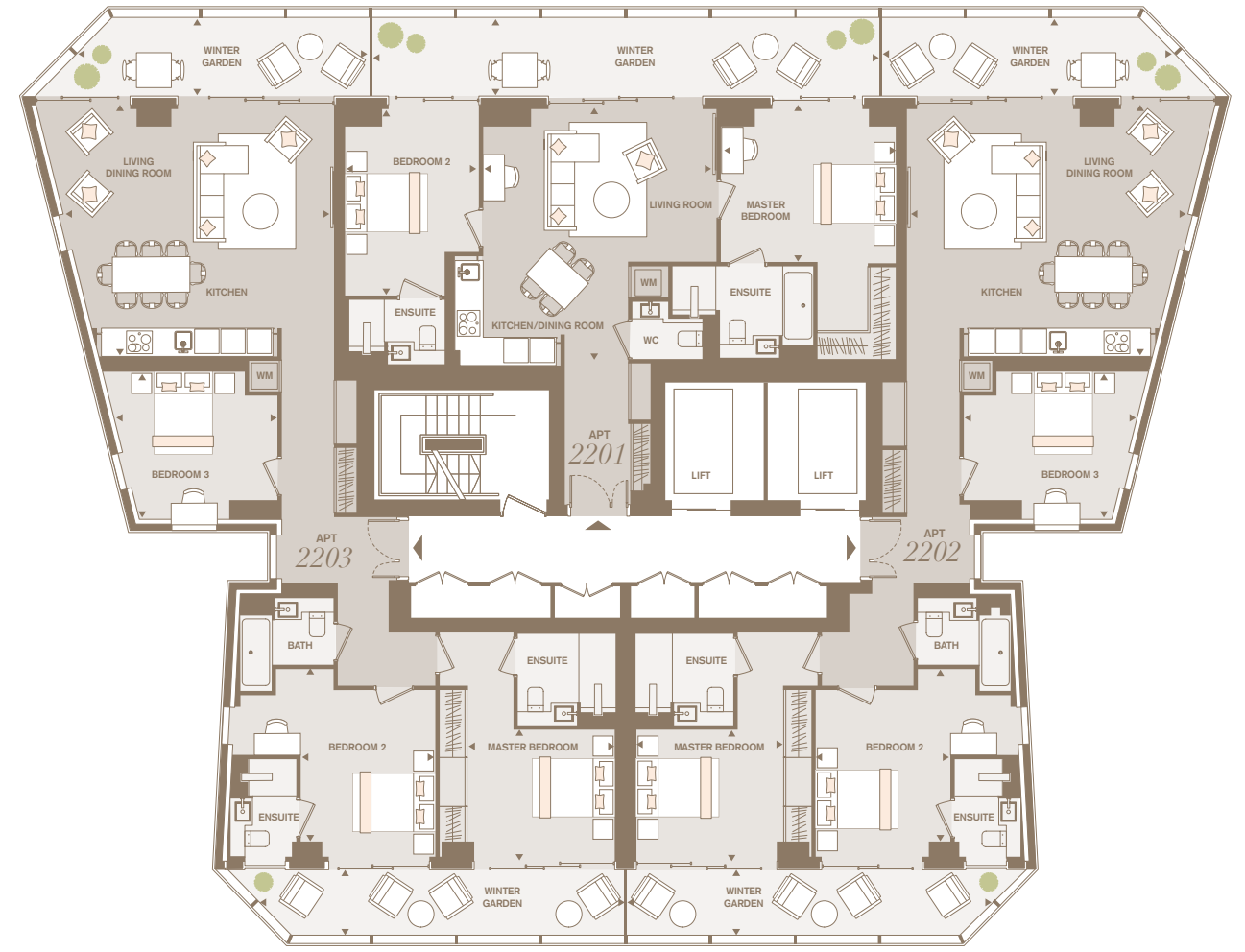
RIVER THAMES
R.T.

APARTMENT 2101	APARTMENT 2102	APARTMENT 2103	APARTMENT 2104
INTERNAL AREA 1046 sq ft, 97.2 sq m	INTERNAL AREA 571 sq ft, 53.0 sq m	INTERNAL AREA 568 sq ft, 52.8 sq m	INTERNAL AREA 1121 sq ft, 104.2 sq m
WINTER GARDEN AREA 262 sq ft, 24.4 sq m	WINTER GARDEN AREA 135 sq ft, 12.6 sq m	WINTER GARDEN AREA 136 sq ft, 12.6 sq m	WINTER GARDEN AREA 262 sq ft, 24.4 sq m
TOTAL AREA including W/G 1309 sq ft, 121.6 sq m	TOTAL AREA including W/G 706 sq ft, 65.6 sq m	TOTAL AREA including W/G 704 sq ft, 65.4 sq m	TOTAL AREA including W/G 1384 sq ft, 128.6 sq m
LIVING/DINING/KITCHEN 6030mm x 5445mm 19' 9" x 17' 10"	LIVING/DINING/KITCHEN 6037mm x 4464mm 19' 10" x 14' 8"	LIVING/DINING/KITCHEN 6037mm x 4464mm 19' 10" x 14' 8"	LIVING/DINING/KITCHEN 6045mm x 6030mm 19' 10" x 19' 9"
MASTER BEDROOM 4187mm x 3610mm 13' 9" x 11' 10"	MASTER BEDROOM 3555mm x 3020mm 11' 8" x 9' 11"	MASTER BEDROOM 3555mm x 3020mm 11' 8" x 9' 11"	MASTER BEDROOM 4187mm x 3760mm 13' 9" x 12' 4"
BEDROOM 2 3390mm x 3370mm 11' 1" x 11' 1"	WINTER GARDEN 8427mm x 1500mm 27' 8" x 4' 11"	WINTER GARDEN 8422mm x 1500mm 27' 8" x 4' 11"	BEDROOM 2 3390mm x 3093mm 11' 1" x 10' 2"
BEDROOM 3/STUDY 4734mm x 2205mm 15' 6" x 7' 3"			BEDROOM 3/STUDY 4634mm x 2205mm 15' 2" x 7' 3"
WINTER GARDEN 12589mm x 1937mm 41' 4" x 6' 4"			WINTER GARDEN 12589mm x 1937mm 41' 4" x 6' 4"



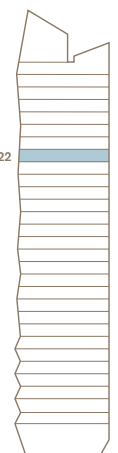
LEVEL 22

SOUTH DOCK
S.D.



RIVER THAMES
R.T.

APARTMENT 2201	APARTMENT 2202	APARTMENT 2203
INTERNAL AREA 905 sq ft, 84.1 sq m	INTERNAL AREA 1242 sq ft, 115.4 sq m	INTERNAL AREA 1223 sq ft, 113.7 sq m
WINTER GARDEN AREA 228 sq ft, 21.1 sq m	WINTER GARDEN AREA (River Thames) 135 sq ft, 12.6 sq m	WINTER GARDEN AREA (River Thames) 133 sq ft, 12.3 sq m
TOTAL AREA including W/G 1133 sq ft, 105.3 sq m	TOTAL AREA including W/G 1510 sq ft, 140.3 sq m	TOTAL AREA including W/G 1491 sq ft, 138.6 sq m
LIVING 4126mm x 2380mm 13' 6" x 7' 10"	LIVING/DINING/KITCHEN 6455mm x 5780mm 21' 2" x 19' 0"	LIVING/DINING/KITCHEN 6220mm x 5780mm 20' 5" x 19' 0"
DINING/KITCHEN 5358mm x 3610mm 17' 7" x 11' 10"	MASTER BEDROOM 3368mm x 3020mm 11' 1" x 9' 11"	MASTER BEDROOM 3368mm x 3020mm 11' 1" x 9' 11"
MASTER BEDROOM 4012mm x 3610mm 13' 2" x 11' 10"	WINTER GARDEN AREA (River Thames) 8378mm x 1500mm 27' 6" x 4' 11"	WINTER GARDEN AREA (River Thames) 8378mm x 1500mm 27' 6" x 4' 11"
BEDROOM 2 4435mm x 3070mm 14' 7" x 10' 1"	WINTER GARDEN AREA (South Dock) 6795mm x 1812mm 22' 4" x 5' 11"	WINTER GARDEN AREA (South Dock) 6795mm x 1812mm 22' 4" x 5' 11"
WINTER GARDEN 11660mm x 1812mm 38' 3" x 5' 11"	BEDROOM 2 3928mm x 3088mm 12' 11" x 10' 2"	BEDROOM 2 3928mm x 3088mm 12' 11" x 10' 2"
	BEDROOM 3 3853mm x 3090mm 12' 8" x 11' 1"	BEDROOM 3 3628mm x 3390mm 11' 11" x 11' 1"



LEVEL 23

SOUTH DOCK
S.D.



RIVER THAMES
R.T.

APARTMENT 2301

INTERNAL AREA
906 sq ft, 84.1 sq m

WINTER GARDEN AREA
212 sq ft, 19.7 sq m

TOTAL AREA including W/G
1117 sq ft, 103.8 sq m

LIVING
5358mm x 3610mm
17' 7" x 11' 10"

KITCHEN/DINING
4126mm x 2380mm
13' 6" x 7' 10"

MASTER BEDROOM
4012mm x 3610mm
13' 2" x 11' 10"

BEDROOM 2
4435mm x 3070mm
14' 7" x 10' 1"

WINTER GARDEN
11660mm x 1687mm
38' 3" x 5' 6"

APARTMENT 2302

INTERNAL AREA
1242 sq ft, 115.3 sq m

WINTER GARDEN AREA
(River Thames)
135 sq ft, 12.6 sq m

TOTAL AREA including W/G
1377 sq ft, 127.9 sq m

LIVING/DINING/ KITCHEN
6455mm x 5780mm
21' 2" x 19' 0"

MASTER BEDROOM
3368mm x 3020mm
11' 1" x 9' 11"

BEDROOM 2
3965mm x 3017mm
13' 0" x 9' 11"

WINTER GARDEN AREA
(South Dock)
125 sq ft, 11.57 sq m

TOTAL AREA including W/G
1502 sq ft, 139.5 sq m

BEDROOM 3
3853mm x 3390mm
12' 8" x 11' 1"

WINTER GARDEN AREA
(River Thames)
8378mm x 1500mm
27' 6" x 4' 11"

WINTER GARDEN AREA
(South Dock)
6856mm x 1687mm
22' 6" x 5' 6"

APARTMENT 2303

INTERNAL AREA
1223 sq ft, 113.7 sq m

WINTER GARDEN AREA
(River Thames)
135 sq ft, 12.6 sq m

TOTAL AREA including W/G
1358 sq ft, 126.3 sq m

LIVING/DINING/ KITCHEN
6220mm x 5780mm
20' 5" x 19' 0"

MASTER BEDROOM
3368mm x 3020mm
11' 1" x 9' 11"

BEDROOM 2
3965mm x 3017mm
13' 0" x 9' 11"

WINTER GARDEN AREA
(South Dock)
125 sq ft, 11.57 sq m

TOTAL AREA including W/G
1483 sq ft, 137.8 sq m

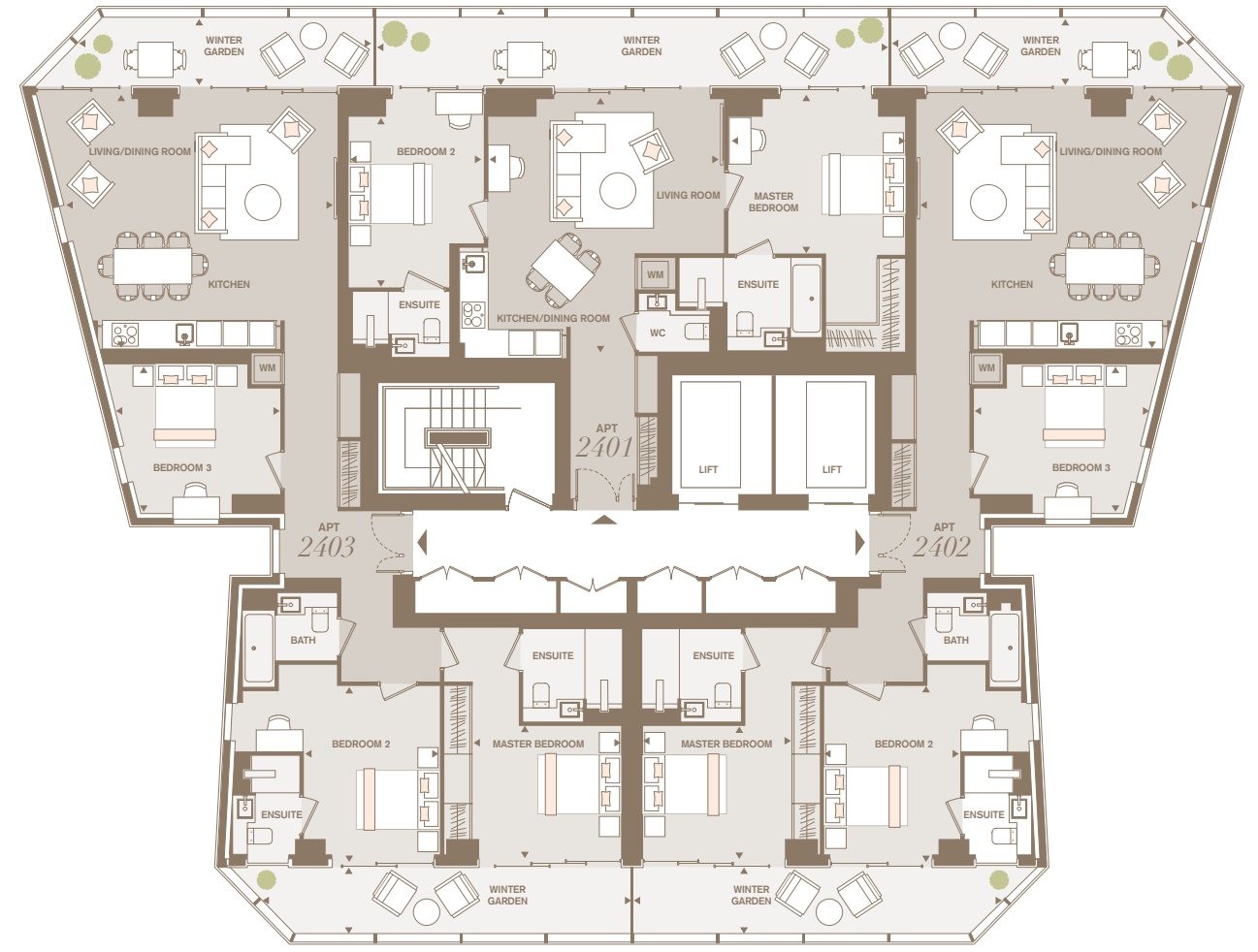
BEDROOM 3
3628mm x 3390mm
11' 11" x 11' 1"

WINTER GARDEN AREA
(River Thames)
8378mm x 1500mm
27' 6" x 4' 11"

WINTER GARDEN AREA
(South Dock)
6856mm x 1687mm
22' 6" x 5' 6"

LEVEL 24

SOUTH DOCK
S.D.



RIVER THAMES
R.T.

APARTMENT 2401

INTERNAL AREA
906 sq ft, 84.1 sq m

WINTER GARDEN AREA
196 sq ft, 18.2 sq m

TOTAL AREA including W/G
1102 sq ft, 102.3 sq m

LIVING
5358mm x 3610mm
17' 7" x 11' 10"

KITCHEN/DINING
4126mm x 2380mm
13' 6" x 7' 10"

MASTER BEDROOM
4012mm x 3610mm
13' 2" x 11' 10"

BEDROOM 2
4435mm x 3070mm
14' 7" x 10' 1"

WINTER GARDEN
11660mm x 1562mm
38' 3" x 5' 1"

APARTMENT 2402

INTERNAL AREA
1242 sq ft, 115.4 sq m

WINTER GARDEN AREA
(River Thames)
135 sq ft, 12.6 sq m

TOTAL AREA including W/G
1377 sq ft, 127.9 sq m

LIVING/DINING/ KITCHEN
6455mm x 5780mm
21' 2" x 19' 0"

MASTER BEDROOM
3368mm x 3020mm
11' 1" x 9' 11"

BEDROOM 2
3929mm x 3092mm
12' 11" x 10' 2"

WINTER GARDEN AREA
(South Dock)
116 sq ft, 10.8 sq m

TOTAL AREA including W/G
1493 sq ft, 138.8 sq m

BEDROOM 3
3853mm x 3390mm
12' 8" x 11' 1"

WINTER GARDEN AREA
(River Thames)
8378mm x 1500mm
27' 6" x 4' 11"

WINTER GARDEN AREA
(South Dock)
6917mm x 1562mm
22' 8" x 5' 1"

APARTMENT 2403

INTERNAL AREA
1223 sq ft, 113.7 sq m

WINTER GARDEN AREA
(River Thames)
116 sq ft, 10.8 sq m

TOTAL AREA including W/G
1339 sq ft, 124.5 sq m

LIVING/DINING/ KITCHEN
6220mm x 5780mm
20' 5" x 19' 0"

MASTER BEDROOM
3368mm x 3020mm
11' 1" x 9' 11"

BEDROOM 2
3929mm x 3092mm
12' 11" x 10' 2"

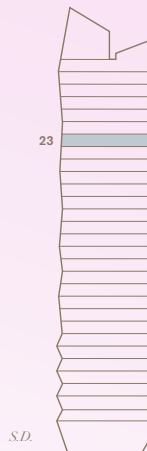
WINTER GARDEN AREA
(South Dock)
135 sq ft, 12.57 sq m

TOTAL AREA including W/G
1475 sq ft, 137.0 sq m

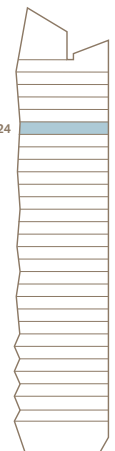
BEDROOM 3
3628mm x 3390mm
11' 11" x 11' 1"

WINTER GARDEN AREA
(River Thames)
8378mm x 1500mm
27' 6" x 4' 11"

WINTER GARDEN AREA
(South Dock)
6917mm x 1562mm
22' 8" x 5' 1"



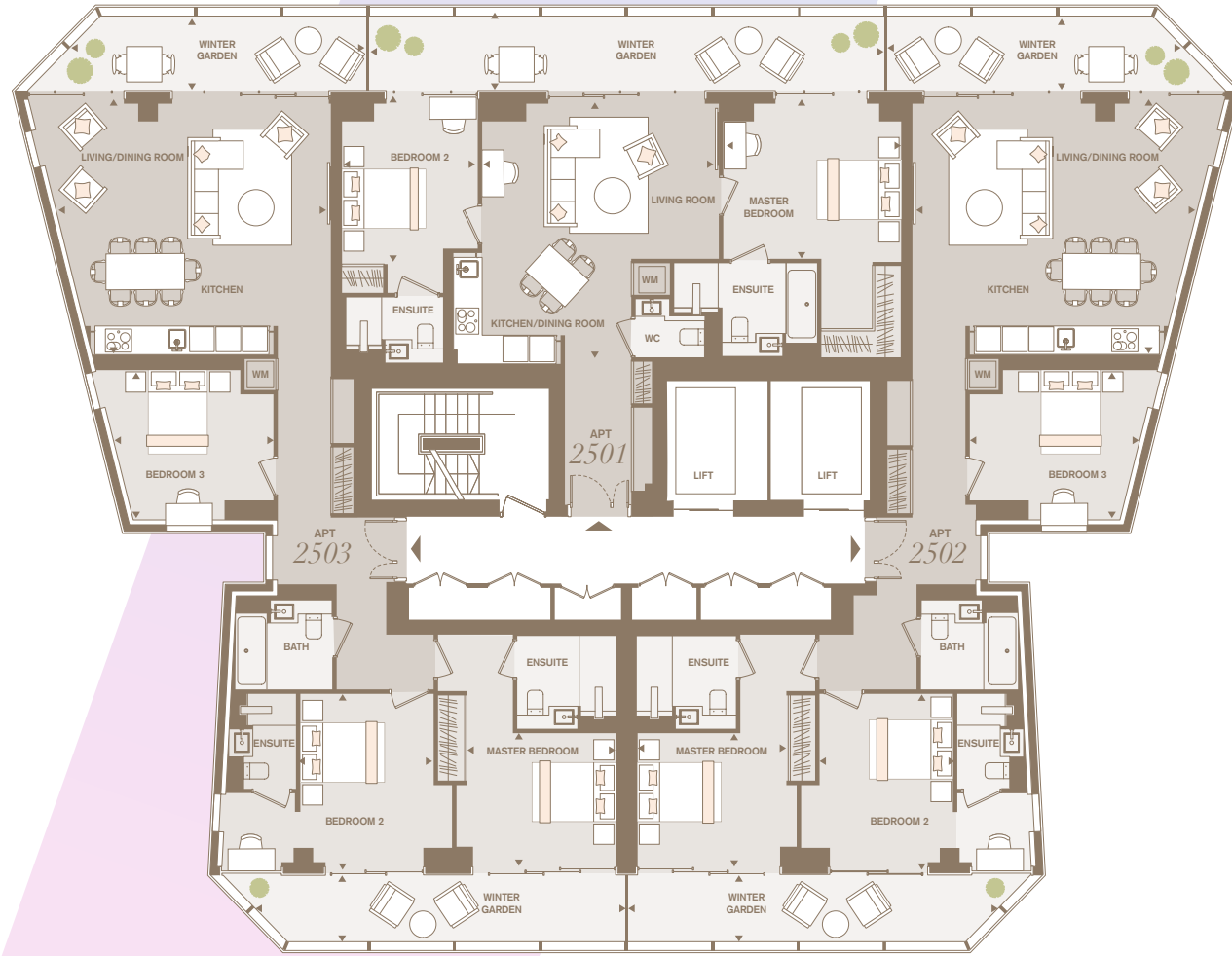
S.D. R.T.



S.D. R.T.

LEVEL 25

SOUTH DOCK
S.D.



RIVER THAMES
R.T.

APARTMENT 2501

INTERNAL AREA
906 sq ft, 84.1 sq m
WINTER GARDEN AREA
(River Thames)
188 sq ft, 17.5 sq m
TOTAL AREA including W/G
1094 sq ft, 101.6 sq m

LIVING
5358mm x 3610mm
17' 7" x 11' 10"
DINING/KITCHEN
4126mm x 2380mm
13' 6" x 7' 10"
MASTER BEDROOM
4012mm x 3610mm
13' 2" x 11' 10"
BEDROOM 2
4435mm x 3070mm
14' 7" x 10' 1"
WINTER GARDEN
11660mm x 1501mm
38' 3" x 4' 11"

APARTMENT 2502

INTERNAL AREA
1242 sq ft, 115.4 sq m
WINTER GARDEN AREA
(River Thames)
112 sq ft, 10.4 sq m
TOTAL AREA including W/G
1489 sq ft, 138.4 sq m

LIVING/DINING/KITCHEN
6455mm x 5780mm
21' 2" x 19' 0"
MASTER BEDROOM
3368mm x 3020mm
11' 1" x 9' 11"
BEDROOM 2
3965mm x 3017mm
13' 0" x 9' 11"
WINTER GARDEN AREA
(South Dock)
6946mm x 1501mm
22' 9" x 4' 11"

WINTER GARDEN AREA
(South Dock)
135 sq ft, 12.57 sq m
TOTAL AREA including W/G
1489 sq ft, 138.4 sq m

BEDROOM 3
3853mm x 3390mm
12' 8" x 11' 1"
WINTER GARDEN AREA
(River Thames)
8378mm x 1500mm
27' 6" x 4' 11"
WINTER GARDEN AREA
(South Dock)
6946mm x 1501mm
22' 9" x 4' 11"

APARTMENT 2503

INTERNAL AREA
1223 sq ft, 113.7 sq m
WINTER GARDEN AREA
(River Thames)
135 sq ft, 12.6 sq m
TOTAL AREA including W/G
1471 sq ft, 136.6 sq m

LIVING/DINING/KITCHEN
6220mm x 5780mm
20' 5" x 19' 0"
MASTER BEDROOM
3368mm x 3020mm
11' 1" x 9' 11"
BEDROOM 2
3965mm x 3017mm
13' 0" x 9' 11"
WINTER GARDEN AREA
(South Dock)
6946mm x 1501mm
22' 9" x 4' 11"

WINTER GARDEN AREA
(South Dock)
112 sq ft, 10.42 sq m
TOTAL AREA including W/G
1471 sq ft, 136.6 sq m

BEDROOM 3
3628mm x 3390mm
11' 11" x 11' 1"
WINTER GARDEN AREA
(River Thames)
8378mm x 1500mm
27' 6" x 4' 11"
WINTER GARDEN AREA
(South Dock)
6946mm x 1501mm
22' 9" x 4' 11"

LEVEL 26

SOUTH DOCK
S.D.



RIVER THAMES
R.T.

APARTMENT 2601

INTERNAL AREA
906 sq ft, 84.1 sq m
WINTER GARDEN AREA
(River Thames)
188 sq ft, 18.9 sq m
TOTAL AREA including W/G
1109 sq ft, 103.1 sq m

LIVING
5358mm x 3610mm
17' 7" x 11' 10"
KITCHEN/DINING
4126mm x 2380mm
13' 6" x 7' 10"
MASTER BEDROOM
4012mm x 3610mm
13' 2" x 11' 10"
BEDROOM 2
4435mm x 3070mm
14' 7" x 10' 1"
WINTER GARDEN
11660mm x 1623mm
38' 3" x 5' 4"

APARTMENT 2602

INTERNAL AREA
1242 sq ft, 115.4 sq m
WINTER GARDEN AREA
(River Thames)
135 sq ft, 12.6 sq m
TOTAL AREA including W/G
1498 sq ft, 139.1 sq m

LIVING/DINING/KITCHEN
6455mm x 5780mm
21' 2" x 19' 0"
MASTER BEDROOM
3368mm x 3020mm
11' 1" x 9' 11"
BEDROOM 2
3929mm x 3092mm
12' 11" x 10' 2"
WINTER GARDEN AREA
(South Dock)
6887mm x 1623mm
22' 7" x 5' 4"

WINTER GARDEN AREA
(South Dock)
120 sq ft, 11.18 sq m
TOTAL AREA including W/G
1498 sq ft, 139.1 sq m

BEDROOM 3
3853mm x 3390mm
12' 8" x 11' 1"
WINTER GARDEN AREA
(River Thames)
8378mm x 1500mm
27' 6" x 4' 11"
WINTER GARDEN AREA
(South Dock)
6887mm x 1623mm
22' 7" x 5' 4"

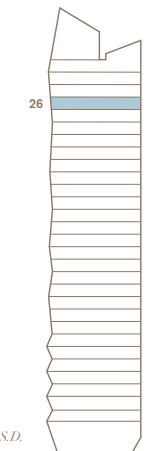
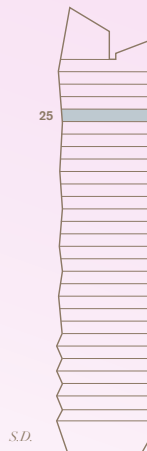
APARTMENT 2603

INTERNAL AREA
1223 sq ft, 113.7 sq m
WINTER GARDEN AREA
(South Dock)
120 sq ft, 11.2 sq m
TOTAL AREA including W/G
1479 sq ft, 137.4 sq m

LIVING/DINING/KITCHEN
6220mm x 5780mm
20' 5" x 19' 0"
MASTER BEDROOM
3368mm x 3020mm
11' 1" x 9' 11"
BEDROOM 2
3929mm x 3092mm
12' 11" x 10' 2"
WINTER GARDEN AREA
(South Dock)
6887mm x 1623mm
22' 7" x 5' 4"

WINTER GARDEN AREA
(River Thames)
135 sq ft, 12.57 sq m
TOTAL AREA including W/G
1479 sq ft, 137.4 sq m

BEDROOM 3
3628mm x 3390mm
11' 11" x 11' 1"
WINTER GARDEN AREA
(River Thames)
8378mm x 1500mm
27' 6" x 4' 11"
WINTER GARDEN AREA
(South Dock)
6887mm x 1623mm
22' 7" x 5' 4"



LEVEL 27

SOUTH DOCK
S.D.



RIVER THAMES
R.T.

APARTMENT 2701

INTERNAL AREA
1664 sq ft, 154.6 sq m

WINTER GARDEN AREA
(River Thames)
135 sq ft, 12.6 sq m

LIVING/DINING
7487mm x 5675mm
18' 7" x 14' 7"

KITCHEN
5280mm x 4205mm
17' 4" x 13' 10"

MASTER BEDROOM
4124mm x 3110mm
13' 6" x 10' 2"

BEDROOM 2
3955mm x 3909mm
13' 0" x 12' 10"

WINTER GARDEN AREA
(South Dock)
238 sq ft, 22.12 sq m

TOTAL AREA including W/G
2037 sq ft, 189.3 sq m

BEDROOM 3
3908mm x 3340mm
12' 10" x 10' 11"

WINTER GARDEN AREA
(River Thames)
8378mm x 1500mm
27' 6" x 4' 11"

WINTER GARDEN AREA
(South Dock)
12683mm x 1744mm
41' 7" x 5' 9"

APARTMENT 2702

INTERNAL AREA
1740 sq ft, 161.6 sq m

WINTER GARDEN AREA
(River Thames)
135 sq ft, 12.6 sq m

LIVING/DINING
7212mm x 5825mm
23' 8" x 19' 1"

KITCHEN
5406mm x 4205mm
17' 9" x 13' 10"

MASTER BEDROOM
4124mm x 3110mm
13' 6" x 10' 2"

BEDROOM 2
3955mm x 3911mm
13' 0" x 12' 10"

WINTER GARDEN AREA
(South Dock)
238 sq ft, 22.12 sq m

TOTAL AREA including W/G
2113 sq ft, 196.3 sq m

BEDROOM 3
4184mm x 3340mm
13' 9" x 10' 11"

WINTER GARDEN AREA
(River Thames)
8378mm x 1500mm
27' 6" x 4' 11"

WINTER GARDEN AREA
(South Dock)
12683mm x 1744mm
41' 7" x 5' 9"

ABOUT THE DEVELOPERS

DOLLAR BAY IS BROUGHT TO YOU BY CITYSTYLE HOMES AND MOUNT ANVIL. THIS IS OUR SECOND JOINT VENTURE AND FOLLOWS THE MULTIPLE AWARD-WINNING CENTRAL SQUARE, WHICH CREATED 274 NEW HOMES IN CLERKENWELL, EC1.



Top: Penthouse at Central Square.
Bottom: The Loxfords.

MOUNT ANVIL

Mount Anvil is Central London's specialist residential developer, and we've been creating homes and communities that people want to live in since 1991. Together with our joint venture partners, we've built more than 5,000 London homes. We plan to build 2,000 more by 2018.

We focus on location, design and quality; creating homes in highly desirable locations, employing internationally acclaimed architects and interior designers, and meticulously selecting construction materials, so that our developments look as great in ten years' time as they do on day one. We treat every development as unique with each given their own identity.

Our approach, the Mount Anvil Way, has been recognised through numerous awards, including: Developer of the Year (less than 1,000 units) at the acclaimed Property Week RESI Awards 2013; and Gold Award for Best Interior Design at the 2013 What House? Awards. We have also been recognised as one of the Sunday Times Best 100 Small Companies to Work For in each of the last eight years – a standout achievement within the British property industry.

Killian

Killian Hurley
Chief Executive
Mount Anvil

CITYSTYLE HOMES

Citystyle Homes is the private development arm of One Housing Group. Our Citystyle portfolio includes over 4,800 properties, including homes for private sale, private rent and shared ownership.

One Housing Group owns and manages 15,000 homes and we plan to build 2,000 more affordable homes over the next three years. We'll fund this by selling the 4,000 new market sale homes through Citystyle.

We're proud to be commercially driven and dynamic because our success enables us to make a positive difference to people's lives and communities by developing more high-quality homes and services that foster aspiration, independence and well-being.

We hope you love Dollar Bay as much as we do. We believe it is a stunning new addition to one of London's most vibrant areas.

Mick Sweeney

Mick Sweeney
Group Chief Executive
One Housing Group

DOLLAR BAY ENQUIRIES:

E sales@dollarbay.co.uk

T 0845 0779069

W dollarbay.co.uk

GENERAL DISCLAIMER:

All information contained within this brochure is correct at the time of going to press. The computer generated images of the development are indicative and are used for illustrative purposes only.

made by me&dave



Another One Housing Group
and Mount Anvil partnership

