



11 Highlands Taunton TA1 4HP

£775,000

robert
cooney



Located in the exclusive Highlands cul-de-sac in Sherford in mature, south facing private gardens of over a quarter of an acre is this 5 double bedroomed detached chalet style home, which has been extended and refurbished to a high standard, extending to 2,259 sq. ft. The property is within walking distance of Vivary Park, the town centre, Musgrove Park Hospital, Queens College and The Castle School with garage, car port and ample driveway parking.





Features

- Entrance Porch
- Entrance Hall
- Living Room with original Parquet flooring, woodburner and French doors to garden
- Dining Room
- Fitted Kitchen with integrated dishwasher, electric oven and hob, gas fired Aga and walk-in larder
- Utility Room with door to garden
- Cloakroom and boiler
- Bedroom 3 on ground floor with gas fire and original Parquet flooring
- Bedroom 4 on ground floor with fitted wardrobe
- Ground floor Shower Room
- Master Bedroom with fitted wardrobes, picture window overlooking the rear garden, Velux windows and Ensuite Bathroom
- 2 further double Bedrooms, large walk-in Airing Cupboard and access to eaves storage
- Family Shower Room
- Garage, car port, ample driveway parking and EV charger
- Gas central heating
- Double glazing
- The Castle School catchment
- Council tax band F
- What3words:
[///bunch.entertainer.pounds](https://www.what3words.com/#!/bunch.entertainer.pounds)







Highlands is situated within easy reach of the centre of Taunton, the County Town of Somerset, and within walking distance of Vivary Park.

The town is a bustling, forward-looking town with excellent amenities, a good selection of independent and high street shops, distinctive restaurants, cafés, a wealth of history and sporting facilities including the County Cricket Ground.

Taunton benefits from a main line railway station linking to London Paddington in less than 2 hours and excellent communications for the M5 motorway at junction 25, situated on the eastern side of the town.

Taunton also offers a good selection of both state and independent schools including Castle School, Taunton School, King's and Queen's Colleges and Richard Huish Sixth Form College.



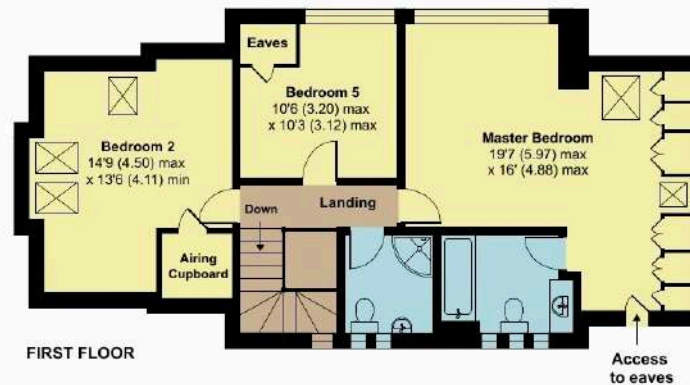
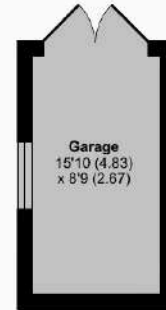
11 Highlands, Taunton, TA1 4HP

Approximate Area = 2268 sq ft / 210.6 sq m

Garage = 137 sq ft / 12.7 sq m

Total = 2405 sq ft / 223.4 sq m

For identification only - Not to scale



FIRST FLOOR



Viewing strictly through the selling agents:

Robert Cooney

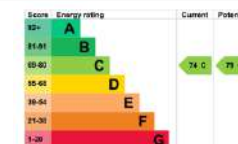
Corporation Street, Taunton,
Somerset TA1 4AW

Telephone 01823 230 230

E-mail taunton@robertcooney.co.uk

Website robertcooney.co.uk

Floor plan produced in accordance with RICS Property Measurement 2nd Edition, incorporating International Property Measurement Standards (IPMS2 Residential). © nchecom 2025. Produced for Robert Cooney. REF: 1401793



For clarification, we wish to inform prospective purchasers that: these particulars are set out as a general outline only for the guidance of intended purchasers, and do not constitute, nor constitute part of, an offer or contract; all descriptions, dimensions, references to condition and necessary permission for use and occupation, and other details, are given without responsibility and any intending purchasers should not rely on them as statements or representation of fact, but must satisfy themselves by inspection or otherwise as to the correctness of each of them; no person in the employment of Robert Cooney has any authority to make or give any representation or warranty whatever in relation to this property; we have not carried out a detailed survey nor tested the services, appliances and specific fittings.

**robert
cooney**

