



46 Gill Crescent Taunton TA1 4NS

£370,000

robert  
cooney

An immaculately presented 3 double bedrooomed extended end-terraced house within Castle School catchment area with 2 reception rooms, enclosed courtyard garden to rear, garage and ample driveway parking.





## Features

- Entrance Hall
- Reception Room
- Living Room
- Re-fitted Kitchen with door to garden
- Master Bedroom with fitted wardrobe
- 2 further double Bedrooms, Bedroom 3 with fitted wardrobes
- Shower Room
- Family Bathroom
- Enclosed courtyard garden to rear with useful Sheds
- Garage and ample driveway parking
- Gas central heating
- Double glazing
- Castle School catchment
- Owned solar panels generating approximately £1,500 pa
- Council tax band B
- What3words:  
///league.react.scans



# 46 Gill Crescent, Taunton, TA1 4NS

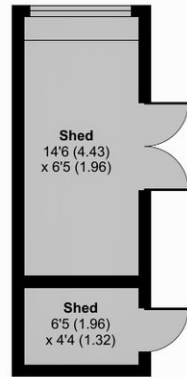
Approximate Area = 1392 sq ft / 129.3 sq m

Garage = 138 sq ft / 12.8 sq m

Outbuilding = 121 sq ft / 11.2 sq m

Total = 1651 sq ft / 153.3 sq m

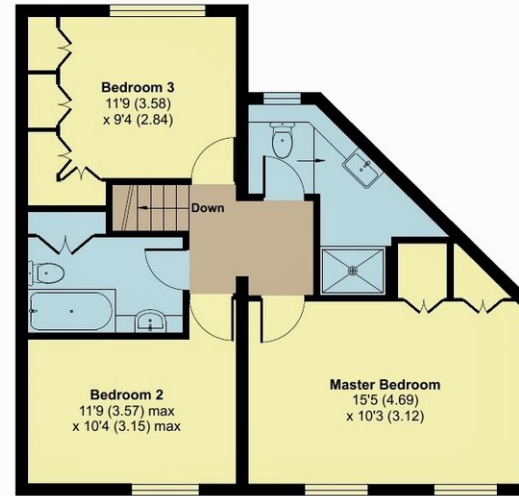
For identification only - Not to scale



OUTBUILDING



GROUND FLOOR



FIRST FLOOR



Floor plan produced in accordance with RICS Property Measurement 2nd Edition, Incorporating International Property Measurement Standards (IPMS2 Residential). © nichecom 2025. Produced for Robert Cooney. REF: 1313487



Viewing strictly through the selling agents:

**Robert Cooney**

Corporation Street, Taunton,  
Somerset TA1 4AW

Telephone 01823 230 230

taunton@robertcooney.co.uk

www.robertcooney.co.uk



For clarification, we wish to inform prospective purchasers that: these particulars are set out as a general outline only for the guidance of intended purchasers, and do not constitute, nor constitute part of, an offer or contract; all descriptions, dimensions, references to condition and necessary permission for use and occupation, and other details, are given without responsibility and any intending purchasers should not rely on them as statements or representation of fact, but must satisfy themselves by inspection or otherwise as to the correctness of each of them; no person in the employment of Robert Cooney has any authority to make or give any representation or warranty whatever in relation to this property; we have not carried out a detailed survey nor tested the services, appliances and specific fittings.

robert  
cooney