



15 Saffron Close Taunton TA1 3XW

Offers in Excess of £350,000

robert
cooney



An immaculately presented 3 double bedroomed detached house in this private cul-de-sac location less than 2 miles from the centre of Taunton with enclosed garden to rear, garage and ample driveway parking.





Features

- Entrance Hall
- Living / Dining Room
- Fitted Kitchen with Leisure Cuisine Master 100 cooker
- Conservatory with French doors to garden
- Cloakroom
- Master Bedroom
- 2 further double Bedrooms
- Family Bathroom with separate shower
- Enclosed garden to rear
- Garage and ample driveway parking
- Gas central heating
- Double glazing
- Council tax band D
- What3words:
///rebounds.weeds.stage



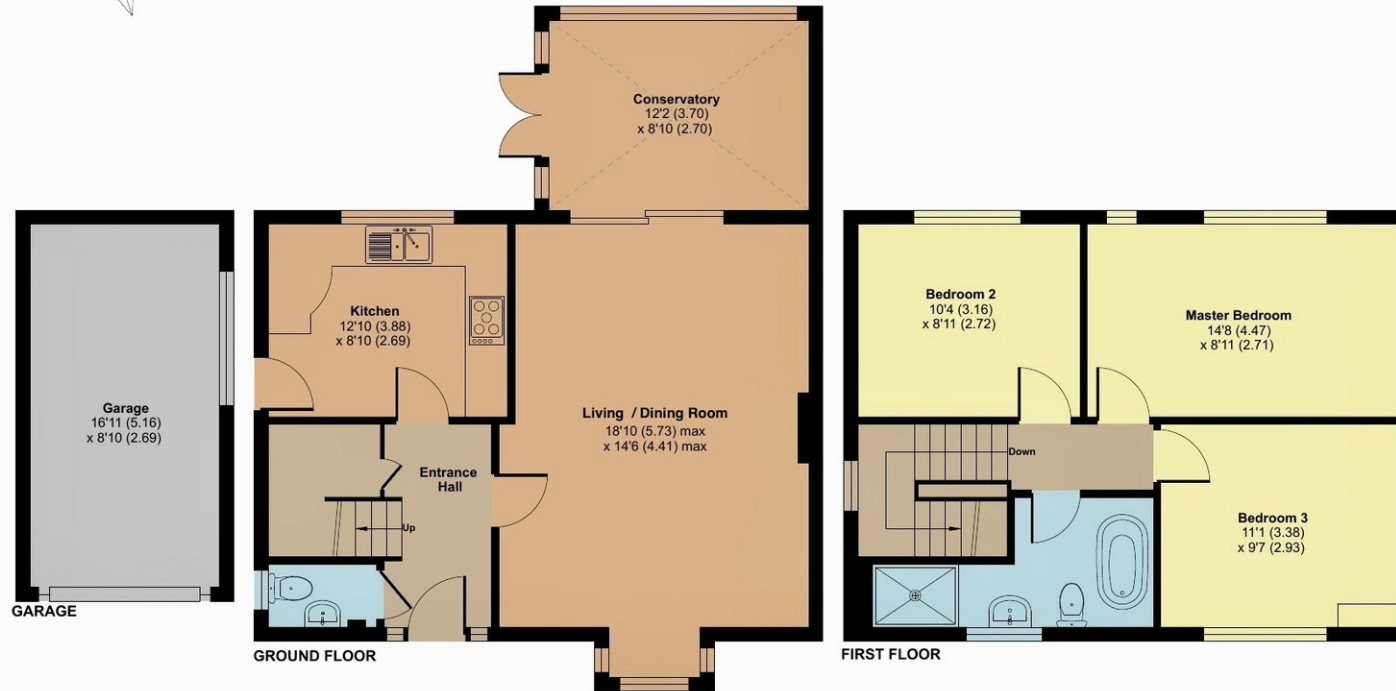
15 Saffron Close, Taunton, TA1 3XW

Approximate Area = 1073 sq ft / 99.6 sq m

Garage = 149 sq ft / 13.8 sq m

Total = 1222 sq ft / 113.4 sq m

For identification only - Not to scale



Viewing strictly through the selling agents:

Robert Cooney

Corporation Street, Taunton,
Somerset TA1 4AW

Telephone 01823 230 230

taunton@robertcooney.co.uk

www.robertcooney.co.uk



Floor plan produced in accordance with RICS Property Measurement 2nd Edition, Incorporating International Property Measurement Standards (IPMS2 Residential). © nichecom 2025. Produced for Robert Cooney. REF: 1302684



**robert
cooney**

For clarification, we wish to inform prospective purchasers that: these particulars are set out as a general outline only for the guidance of intended purchasers, and do not constitute, nor constitute part of, an offer or contract; all descriptions, dimensions, references to condition and necessary permission for use and occupation, and other details, are given without responsibility and any intending purchasers should not rely on them as statements or representation of fact, but must satisfy themselves by inspection or otherwise as to the correctness of each of them; no person in the employment of Robert Cooney has any authority to make or give any representation or warranty whatever in relation to this property; we have not carried out a detailed survey nor tested the services, appliances and specific fittings.