



6 Lilac Close Taunton TA1 2QB

£260,000





In this convenient location less than 1.2 miles of the centre of town is this well presented 3 bedroomed semi-detached bungalow with private enclosed garden to rear, car port and driveway parking. No onward chain.







## Features

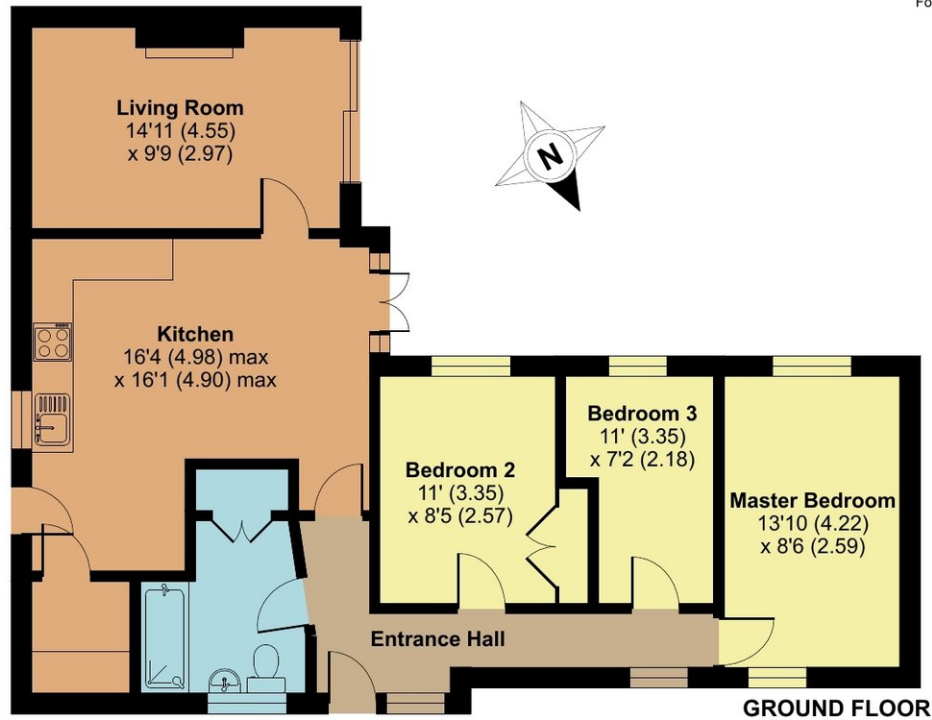
- Entrance Hall
- Fitted Kitchen with French doors to garden
- Living Room
- Master Bedroom
- 2 further Bedrooms, Bedroom 2 with fitted wardrobe
- Family Bathroom
- Enclosed garden to rear
- Car Port and driveway parking
- Gas central heating
- Double glazing
- Council tax band C
- What3words:  
[///reflected.laptops.deny](https://www.what3words.com/?q=///reflected.laptops.deny)



## 6 Lilac Close, Taunton, TA1 2QB

Approximate Area = 871 sq ft / 81 sq m

For identification only - Not to scale



Viewing strictly through the selling agents:

**Robert Cooney**

Corporation Street, Taunton,  
Somerset TA1 4AW

Telephone 01823 230 230

E-mail [taunton@robertcooney.co.uk](mailto:taunton@robertcooney.co.uk)

Website [www.robertcooney.co.uk](http://www.robertcooney.co.uk)



Floor plan produced in accordance with RICS Property Measurement 2nd Edition, Incorporating International Property Measurement Standards (IPMS2 Residential). © nichecom 2025. Produced for Robert Cooney. REF: 1301486



**For clarification, we wish to inform prospective purchasers that:** these particulars are set out as a general outline only for the guidance of intended purchasers, and do not constitute, nor constitute part of, an offer or contract; all descriptions, dimensions, references to condition and necessary permission for use and occupation, and other details, are given without responsibility and any intending purchasers should not rely on them as statements or representation of fact, but must satisfy themselves by inspection or otherwise as to the correctness of each of them; no person in the employment of Robert Cooney has any authority to make or give any representation or warranty whatever in relation to this property; we have not carried out a detailed survey nor tested the services, appliances and specific fittings.

**robert  
cooney**