



15 Eastleigh Road Taunton TA1 2YA

£270,000





Conveniently located within a few minutes' walk of the town centre is this immaculately presented 3 double bedroomed Victorian mid-terraced house arranged over 3 floors with enclosed garden to rear.





Features

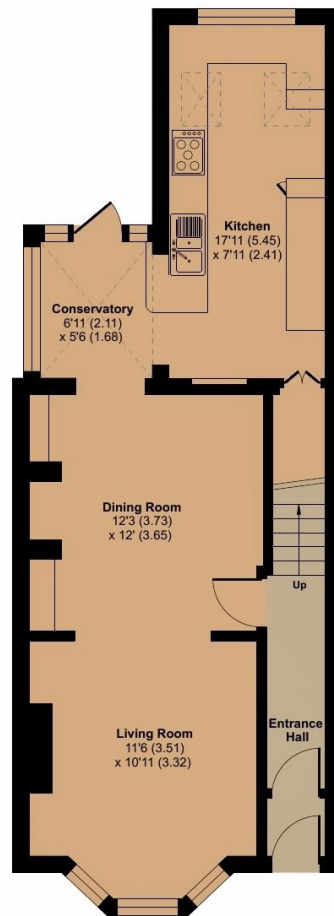
- Entrance Porch
- Entrance Hall
- Living Room with feature fireplace
- Dining Room
- Fitted Kitchen / Conservatory with roof lights and door to garden
- 2 double Bedrooms on 1st floor, Master Bedroom with fitted wardrobes
- Family Bathroom
- Further Bedroom on 2nd floor with Velux windows
- Enclosed garden to rear with rear access
- Gas central heating
- Double glazing
- Council tax band B
- What3words:
///reform.trying.memory



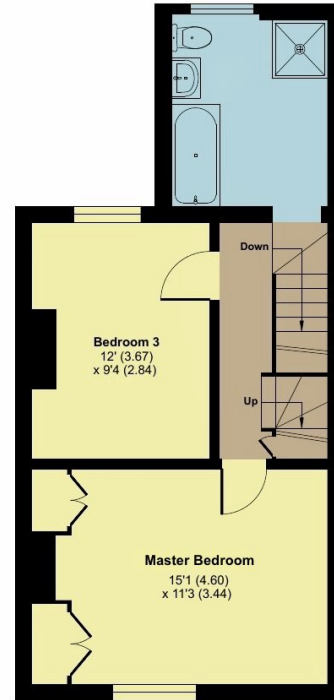
15 Eastleigh Road, Taunton, TA1 2YA

Approximate Area = 1191 sq ft / 110.6 sq m

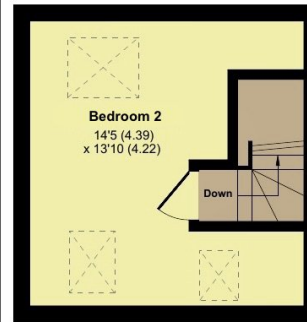
For identification only - Not to scale



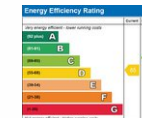
GROUND FLOOR



FIRST FLOOR



SECOND FLOOR



Viewing strictly through the selling agents:

Robert Cooney

Corporation Street, Taunton,
Somerset TA1 4AW

Telephone 01823 230 230

taunton@robertcooney.co.uk

www.robertcooney.co.uk

Floor plan produced in accordance with RICS Property Measurement 2nd Edition, Incorporating International Property Measurement Standards (IPMS2 Residential). © nitchcom 2025. Produced for Robert Cooney. REF: 1295055



For clarification, we wish to inform prospective purchasers that: these particulars are set out as a general outline only for the guidance of intended purchasers, and do not constitute, nor constitute part of, an offer or contract; all descriptions, dimensions, references to condition and necessary permission for use and occupation, and other details, are given without responsibility and any intending purchasers should not rely on them as statements or representation of fact, but must satisfy themselves by inspection or otherwise as to the correctness of each of them; no person in the employment of Robert Cooney has any authority to make or give any representation or warranty whatever in relation to this property; we have not carried out a detailed survey nor tested the services, appliances and specific fittings.

**robert
cooney**