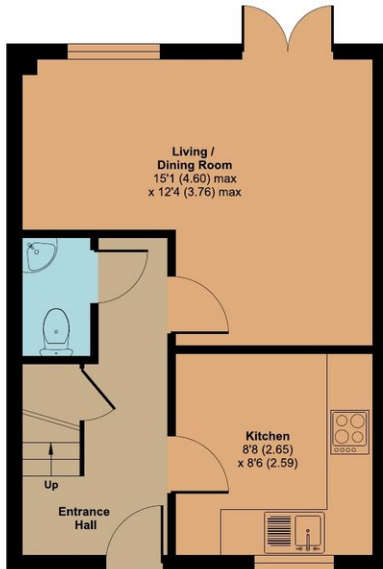




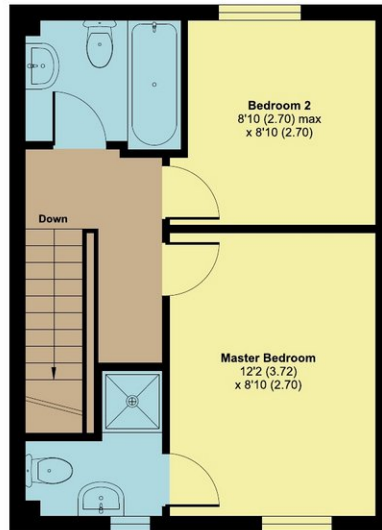


## 24 Shutewater Orchard, Bishops Hull, Taunton, TA1 5FB

Approximate Area = 644 sq ft / 59.8 sq m  
For identification only - Not to scale



GROUND FLOOR



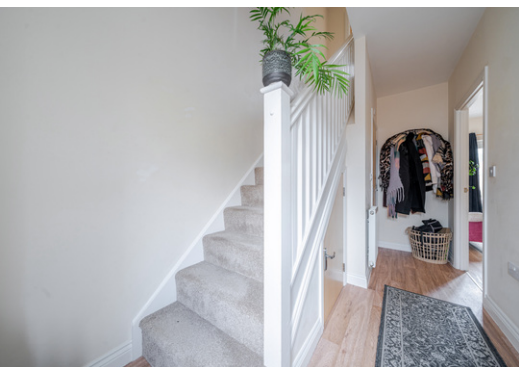
FIRST FLOOR



### Features

- Entrance Hall
- Fitted Kitchen
- Living / Dining Room with French doors to garden
- Cloakroom
- Master Bedroom with Ensuite Shower Room
- Further double Bedroom
- Family Bathroom
- Enclosed garden to rear with useful shed
- Allocated parking for 2 cars to rear
- Gas central heating
- Double glazing
- Council tax band B
- What3words: [///tilt.frock.prop](https://www.what3words.com/tilt.frock.prop)

A well presented 2 double bedroomed mid-terraced house situated in the popular village of Bishops Hull within 1.8 miles of Taunton town centre with enclosed garden to rear and allocated parking for 2 cars to rear. No onward chain.



Viewing strictly through the selling agents:

**Robert Cooney**

Corporation Street, Taunton, Somerset TA1 4AW

Telephone: 01823 230230  
[taunton@robertcooney.co.uk](mailto:taunton@robertcooney.co.uk)  
[robertcooney.co.uk](http://robertcooney.co.uk)

**robert  
cooney**

**For clarification, we wish to inform prospective purchasers that:** these particulars are set out as a general outline only for the guidance of intended purchasers, and do not constitute, nor constitute part of, an offer or contract; all descriptions, dimensions, references to condition and necessary permission for use and occupation, and other details, are given without responsibility and any intending purchasers should not rely on them as statements or representation of fact, but must satisfy themselves by inspection or otherwise as to the correctness of each of them; no person in the employment of Robert Cooney has any authority to make or give any representation or warranty whatever in relation to this property; we have not carried out a detailed survey nor tested the services, appliances and specific fittings.