



1 Hillside Grove Taunton TA1 4LA

robert
cooney



In this sought after location within 1.6 miles of Taunton town centre and within Castle School catchment is this well presented, extended 4 bedroomed detached house with enclosed South West facing garden to rear, garage and driveway parking.





Features

- Entrance Hall
- Living Room with woodburner
- Open Plan fitted Kitchen / Dining Room with roof lights, bi-fold doors and French doors to garden
- Utility Room with door to garden
- Cloakroom
- Office / Family Room
- Master Bedroom with fitted wardrobes
- 3 further Bedrooms
- Shower Room
- Family Bathroom with roll top claw foot bath
- Enclosed South West facing garden to rear
- Garage and driveway parking
- Gas central heating
- Underfloor heating
- Double glazing
- Castle School catchment
- Council tax band E
- What3words:
[///guards.certified.called](https://www.what3words.com/#!/en/guards.certified.called)







Hillside Grove is situated within easy reach of the centre of Taunton, the County Town of Somerset.

The town is a bustling, forward-looking town with excellent amenities, a good selection of independent and high street shops, distinctive restaurants, cafés, a wealth of history and sporting facilities including the County Cricket Ground.

Taunton benefits from a main line railway station linking to London Paddington in less than 2 hours and excellent communications for the M5 motorway at junction 25, situated on the eastern side of the town.

Taunton also offers a good selection of both state and independent schools including Castle School, Taunton School, King's and Queen's Colleges and Richard Huish Sixth Form College.



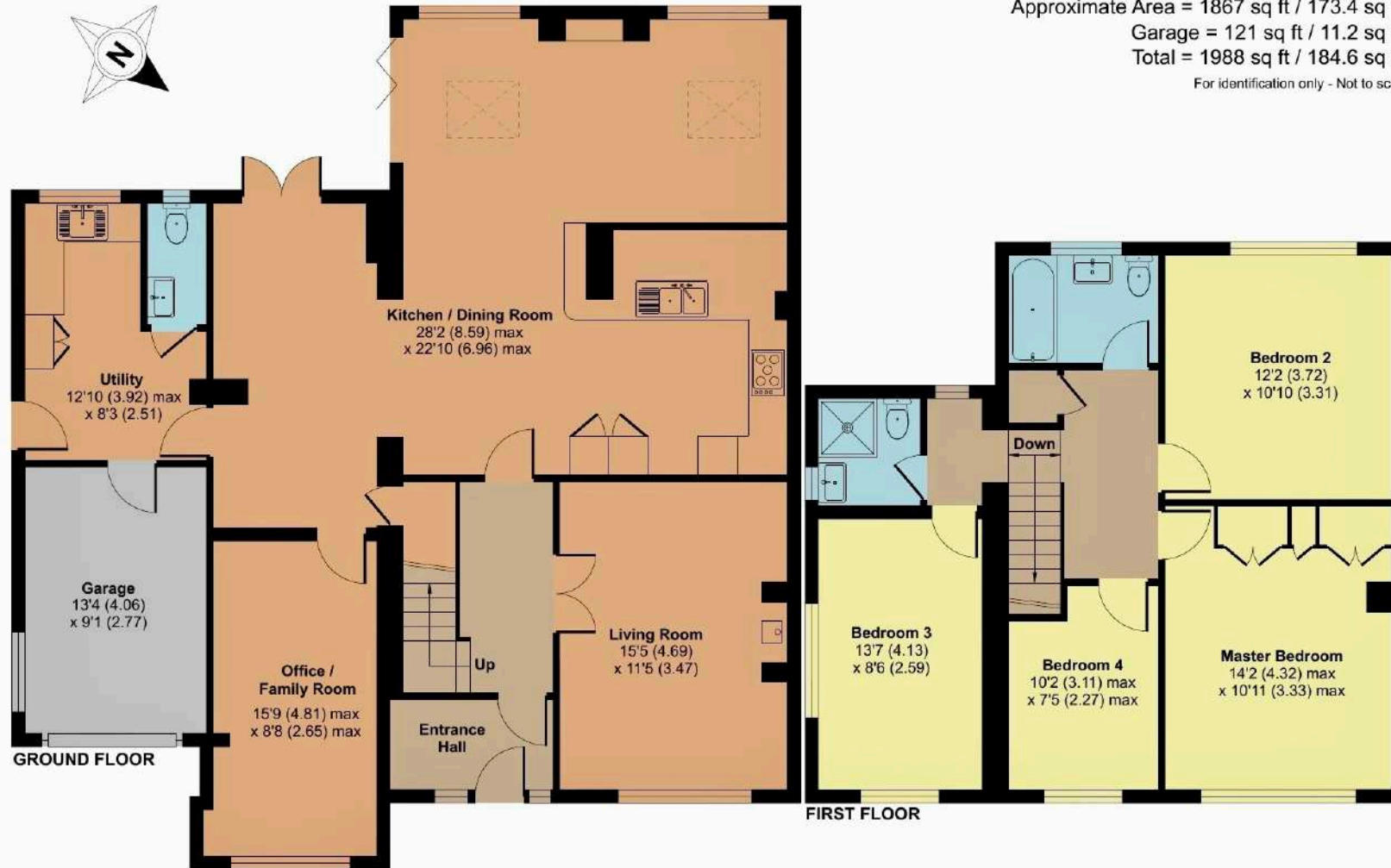
1 Hillside Grove, Taunton, TA1 4LA

Approximate Area = 1867 sq ft / 173.4 sq m

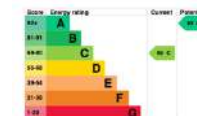
Garage = 121 sq ft / 11.2 sq m

Total = 1988 sq ft / 184.6 sq m

For identification only - Not to scale



Floor plan produced in accordance with RICS Property Measurement 2nd Edition, Incorporating International Property Measurement Standards (IPMS2 Residential). © nidecom 2025. Produced for Robert Cooney. REF: 1268752



For clarification, we wish to inform prospective purchasers that: these particulars are set out as a general outline only for the guidance of intended purchasers, and do not constitute, nor constitute part of, an offer or contract; all descriptions, dimensions, references to condition and necessary permission for use and occupation, and other details, are given without responsibility and any intending purchasers should not rely on them as statements or representation of fact, but must satisfy themselves by inspection or otherwise as to the correctness of each of them; no person in the employment of Robert Cooney has any authority to make or give any representation or warranty whatever in relation to this property; we have not carried out a detailed survey nor tested the services, appliances and specific fittings.

robert
cooney

Viewing strictly through the selling agents:

Robert Cooney

Corporation Street, Taunton,
Somerset TA1 4AW

Telephone 01823 230 230

E-mail taunton@robertcooney.co.uk

Website robertcooney.co.uk

