



8 Woodridge Mead Bishops Lydeard TA4 3PQ

£365,000





Situated in this popular village at the foot of the Quantock Hills is this well presented, extended 3 bedroomed detached bungalow with gardens to front and rear, double garage and driveway parking. No onward chain.







## Features

- Boot Room / Entrance Hall
- Living / Dining Room with door to front garden
- Sitting Room with French doors to rear garden
- Kitchen
- Master Bedroom with fitted wardrobes and Ensuite Shower Room
- 2 further Bedrooms, Bedroom 3 with Ensuite WC
- Family Bathroom
- Gardens to front and rear
- Double Garage and driveway parking
- Gas central heating
- Double glazing
- Council tax band E
- What3words:  
///keepers.skewing.monument





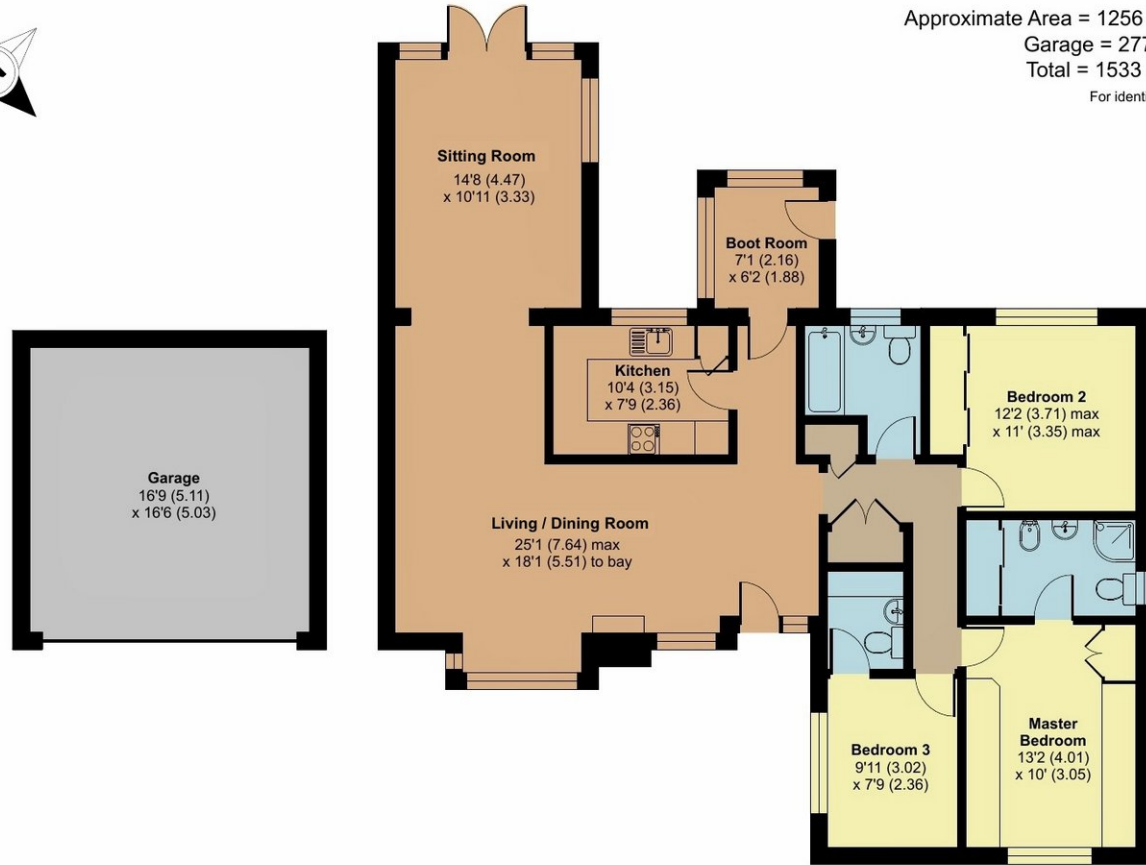
# 8 Woodridge Mead, Bishops Lydeard, Taunton, TA4 3PQ

Approximate Area = 1256 sq ft / 116.7 sq m

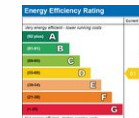
Garage = 277 sq ft / 25.7 sq m

Total = 1533 sq ft / 142.4 sq m

For identification only - Not to scale



GROUND FLOOR



Floor plan produced in accordance with RICS Property Measurement 2nd Edition, Incorporating International Property Measurement Standards (IPMS2 Residential). © nichecom 2025. Produced for Robert Cooney. REF: 1273534



Viewing strictly through the selling agents:

**Robert Cooney**

Corporation Street, Taunton,  
Somerset TA1 4AW

Telephone 01823 230 230

taunton@robertcooney.co.uk

www.robertcooney.co.uk



**For clarification, we wish to inform prospective purchasers that:** these particulars are set out as a general outline only for the guidance of intended purchasers, and do not constitute, nor constitute part of, an offer or contract; all descriptions, dimensions, references to condition and necessary permission for use and occupation, and other details, are given without responsibility and any intending purchasers should not rely on them as statements or representation of fact, but must satisfy themselves by inspection or otherwise as to the correctness of each of them; no person in the employment of Robert Cooney has any authority to make or give any representation or warranty whatever in relation to this property; we have not carried out a detailed survey nor tested the services, appliances and specific fittings.

**robert  
cooney**