



37 Whitmore Road Taunton TA2 6DZ

robert
cooney



A superb 1930's 4 bedroomed family home, fully renovated and extended to a very high standard and specification by reputable local developers, with 2 reception rooms, good sized sunny West facing garden to rear and ample driveway parking. No onward chain.





Features

- Entrance Hall with inset glass balustrade
- Living Room with limestone fireplace
- Open plan fitted Kutschenhaus Kitchen / Dining Room with engineered oak flooring, limestone fireplace, integrated appliances including full height freezer, fridge, microwave combi oven, fan assisted oven with grill, Bora induction hob with integrated extractor, dishwasher, wine cooler, quartz work surfaces, LED lighting and French doors to garden
- Study
- Utility Room with quartz work surfaces and plumbing / space for tumble dryer and washing machine
- Cloakroom
- Master Bedroom with fitted wardrobes and Ensuite Shower Room
- 3 further bedrooms
- Family Bathroom with separate shower
- Enclosed West facing garden to rear with sandstone patio
- Ample driveway parking
- Gas central heating
- Underfloor heating to ground floor
- Refitted double glazing
- Fully re-wired and plumbed
- Newly installed owned solar panels
- Council tax - TBC

CGI's have been used to represent the potential internal furnishings





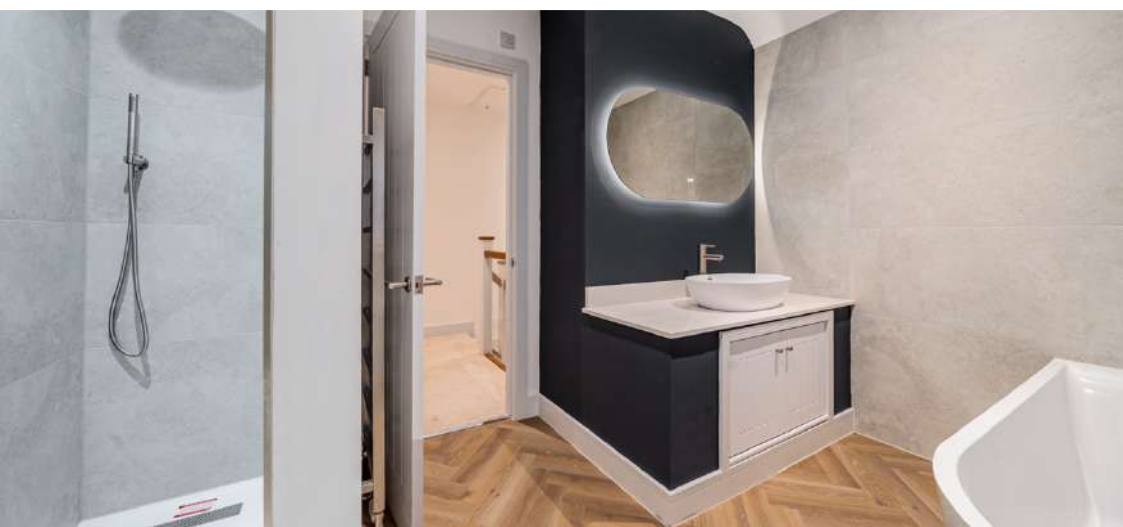


Whitemore Road is situated just over 1 mile from the centre of Taunton, the County Town of Somerset.

Taunton is a bustling, forward-looking town with excellent amenities, a good selection of independent and high street shops, distinctive restaurants, cafés, a wealth of history and sporting facilities including the County Cricket Ground.

Taunton benefits from a main line railway station linking to London Paddington in less than 2 hours and excellent communications for the M5 motorway at junction 25, situated on the eastern side of the town.

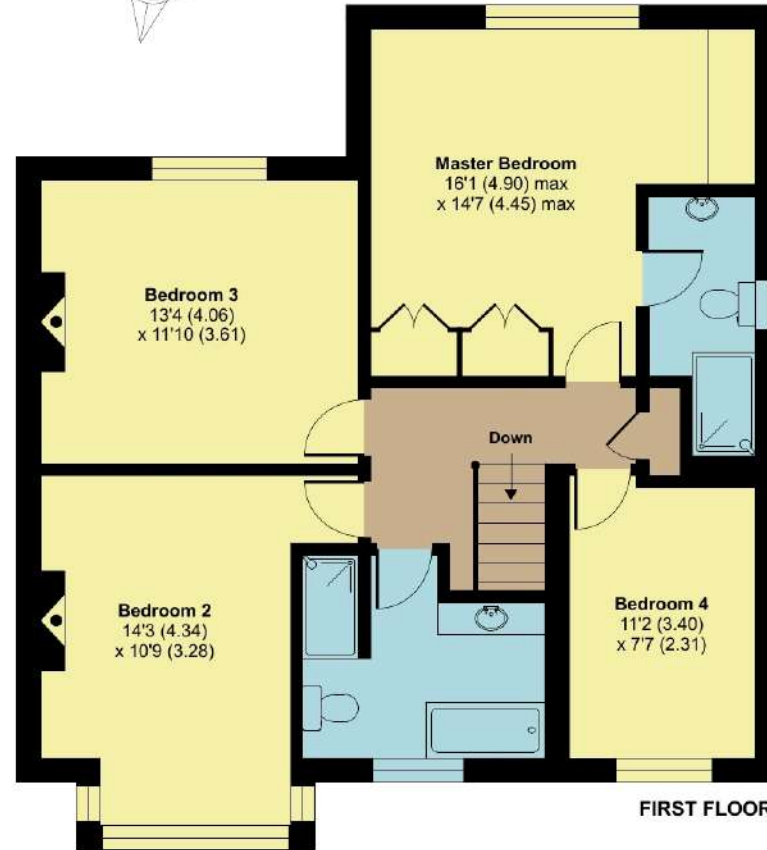
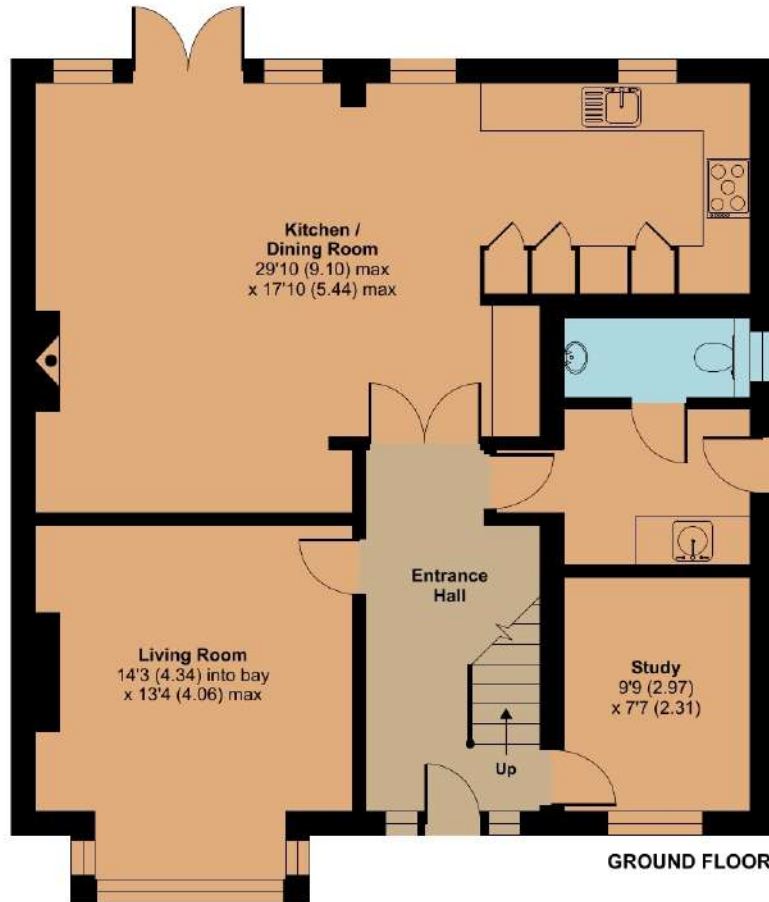
Taunton also offers a good selection of both state and independent schools including Taunton School, King's and Queen's Colleges and Richard Huish Sixth Form College.



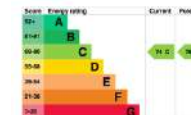
37 Whitmore Road, Taunton, TA2 6DZ

Approximate Area = 1787 sq ft / 166 sq m

For identification only - Not to scale



Floor plan produced in accordance with RICS Property Measurement 2nd Edition, Incorporating International Property Measurement Standards (IPMS2 Residential). © nrichcom 2025. Produced for Robert Cooney. REF: 1264603



Viewing strictly through the selling agents:

Robert Cooney

Corporation Street, Taunton,
Somerset TA1 4AW

Telephone 01823 230 230

E-mail taunton@robertcooney.co.uk

Website robertcooney.co.uk

For clarification, we wish to inform prospective purchasers that: these particulars are set out as a general outline only for the guidance of intended purchasers, and do not constitute, nor constitute part of, an offer or contract; all descriptions, dimensions, references to condition and necessary permission for use and occupation, and other details, are given without responsibility and any intending purchasers should not rely on them as statements or representation of fact, but must satisfy themselves by inspection or otherwise as to the correctness of each of them; no person in the employment of Robert Cooney has any authority to make or give any representation or warranty whatever in relation to this property; we have not carried out a detailed survey nor tested the services, appliances and specific fittings.

**robert
cooney**

