



2 Furlong Green Trull, Taunton TA3 7JP

robert
cooney



A well-presented 3 double bedroomed detached bungalow situated in this highly sought after cul-de-sac location within just 1.5 miles of the centre of town with mature South facing garden occupying a corner plot, double garage and driveway parking. No onward chain.





Features

- Entrance Porch
- Hallway
- Living Room with door to garden
- Dining Room
- Conservatory with bi-fold doors to garden
- Fitted Kitchen with quartz effect worktops and Bosch oven
- Cloakroom
- Master Bedroom with fitted wardrobes
- Bedroom 2 with fitted wardrobe and Ensuite Shower Room
- Further double bedroom with fitted wardrobe
- Family Bathroom

- Mature South facing garden to rear occupying a corner plot
- Double Garage and driveway parking

- Gas central heating
- Double glazing
- Castle School catchment
- Owned solar panels generating approximately £640 pa, variable
- Management charge £200 pa

- Council tax band F

- What3words:
///fails.spirit.hypocrite







Furlong Green is situated in the village of Trull, within 1.5 miles of the centre of Taunton, the County Town of Somerset.

Trull provides excellent amenities including parish church, thriving shop, popular local pub, post office, garage, tennis club, primary school and a regular shuttle bus service to Taunton town centre.

Taunton is a bustling, forward-looking town with excellent amenities, a good selection of independent and high street shops, distinctive restaurants, cafés, a wealth of history and sporting facilities including the County Cricket Ground.

Taunton benefits from a main line railway station linking to London Paddington in less than 2 hours and excellent communications for the M5 motorway at junction 25, situated on the eastern side of the town.



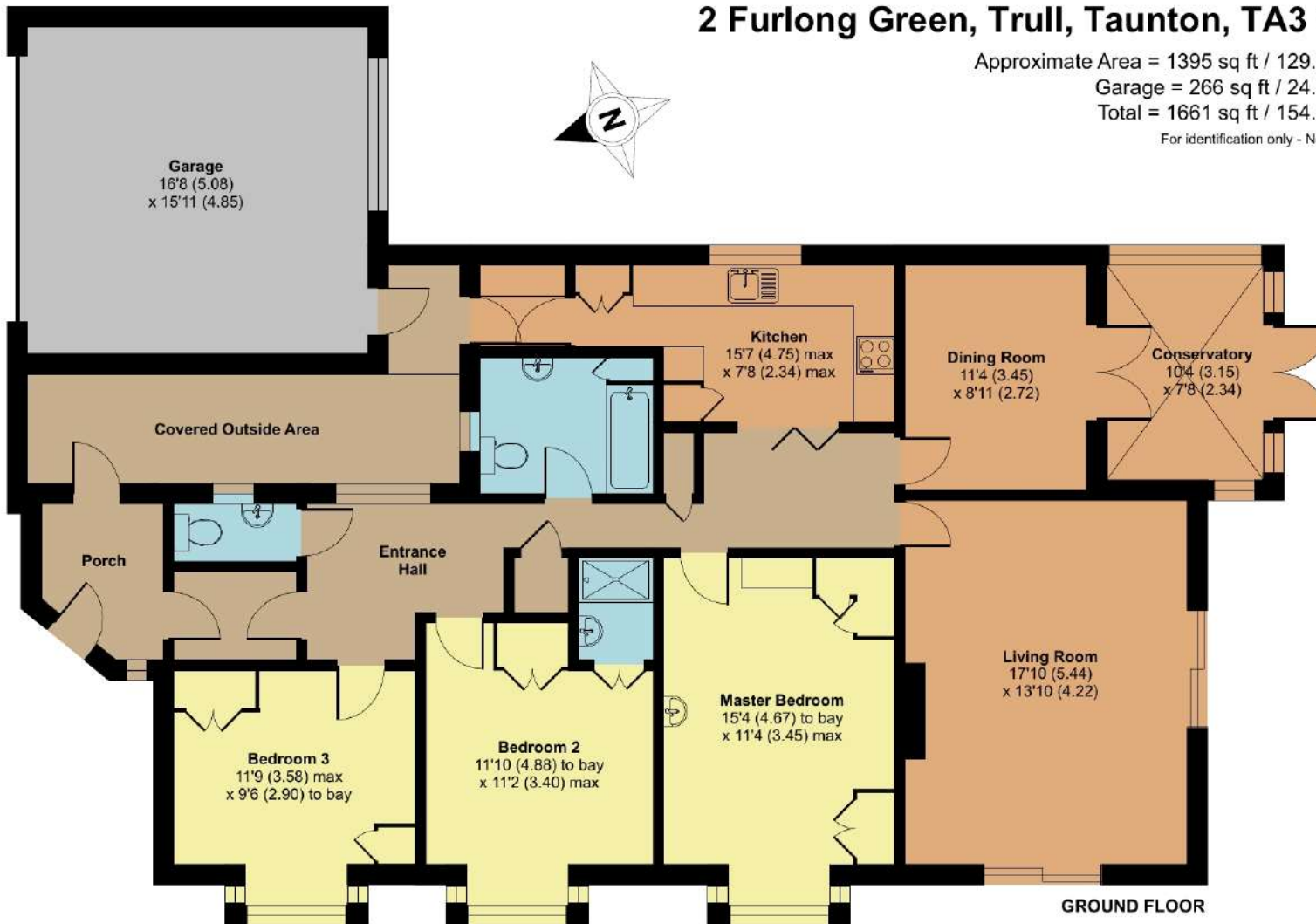
2 Furlong Green, Trull, Taunton, TA3 7JP

Approximate Area = 1395 sq ft / 129.6 sq m

Garage = 266 sq ft / 24.7 sq m

Total = 1661 sq ft / 154.3 sq m

For identification only - Not to scale



Viewing strictly through the selling agents:

Robert Cooney

Corporation Street, Taunton,
Somerset TA1 4AW

Telephone 01823 230 230

E-mail taunton@robertcooney.co.uk

Website robertcooney.co.uk



Floor plan produced in accordance with RICS Property Measurement 2nd Edition.
Incorporating International Property Measurement Standards (IPMS2 Residential). © nichecom 2025.
Produced for Robert Cooney. REF: 1256392



For clarification, we wish to inform prospective purchasers that: these particulars are set out as a general outline only for the guidance of intended purchasers, and do not constitute, nor constitute part of, an offer or contract; all descriptions, dimensions, references to condition and necessary permission for use and occupation, and other details, are given without responsibility and any intending purchasers should not rely on them as statements or representation of fact, but must satisfy themselves by inspection or otherwise as to the correctness of each of them; no person in the employment of Robert Cooney has any authority to make or give any representation or warranty whatever in relation to this property; we have not carried out a detailed survey nor tested the services, appliances and specific fittings.

**robert
cooney**

