



Kirk Lea Mill Lane, Taunton TA3 7AH



This superb, individually designed 4 double bedrooomed detached family home is set in beautiful well established gardens of 1/3 acre in this popular village just 3.7 miles to the South of the town centre, at the foot of the Blackdown Hills, with double garage and ample driveway parking.





Features

- Entrance Hall
- Living Room with door to garden
- Garden Room with French doors to garden
- Dining Room
- Fitted Kitchen with Neff oven
- Utility Room with door to garden
- Study
- Cloakroom
- Master Bedroom with fitted wardrobes and Ensuite Bathroom
- 3 further Double Bedrooms, Bedroom 2 with fitted wardrobes and Bedroom 3 with wash basin
- Family Bathroom
- Enclosed establish gardens of 1/3 acre with feature pond
- Double garage with ample driveway parking
- Double glazing
- Oil fired central heating
- Castle School Catchment
- Council tax band G
- What3words:
///fortunate.presuming.hops







Kirk Lea is situated in the village of Corfe, an Area of Outstanding Natural Beauty at the foot of the Blackdown Hills. The village offers an inn, village hall and Church. The renowned Taunton & Pickeridge Golf Course is close by and there are excellent opportunities for walking and riding with an abundance of footpaths and bridleways.

Taunton, the County Town of Somerset, is situated within 3.7 miles. The town is a bustling, forward-looking town with excellent amenities, a good selection of independent and high street shops, distinctive restaurants, cafés, a wealth of history and sporting facilities including the County Cricket Ground.

Taunton benefits from a main line railway station linking to London Paddington in less than 2 hours and excellent communications for the M5 motorway at junction 25, situated on the eastern side of the town.

Taunton also offers a good selection of both state and independent schools including Castle School, Taunton School, King's and Queen's Colleges and Richard Huish Sixth Form College.



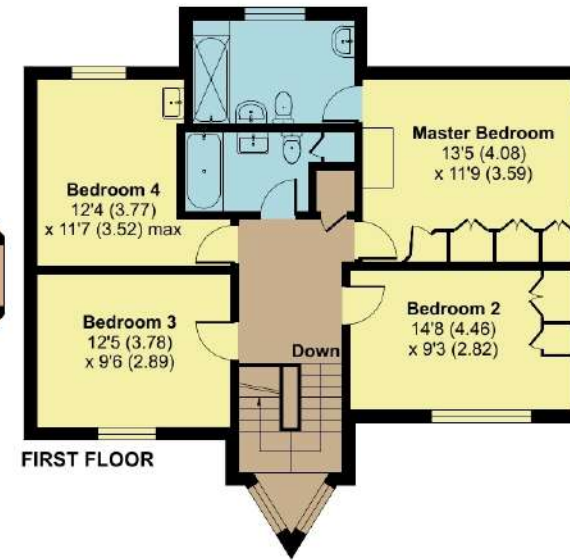
Kirk Lea, Mill Lane, Corfe, Taunton, TA3 7AH

Approximate Area = 2023 sq ft / 187.9 sq m

Garage = 383 sq ft / 35.5 sq m

Total = 2406 sq ft / 223.4 sq m

For identification only - Not to scale



Viewing strictly through the selling agents:

Robert Cooney

Corporation Street, Taunton,
Somerset TA1 4AW

Telephone 01823 230 230

E-mail taunton@robertcooney.co.uk

Website robertcooney.co.uk

GROUND FLOOR



**Certified
Property
Measurer**

Floor plan produced in accordance with RICS Property Measurement Standards incorporating International Property Measurement Standards (IPMS2 Residential). © nichcom 2023.
Produced for Robert Cooney. REF: 1152944



For clarification, we wish to inform prospective purchasers that: these particulars are set out as a general outline only for the guidance of intended purchasers, and do not constitute, nor constitute part of, an offer or contract; all descriptions, dimensions, references to condition and necessary permission for use and occupation, and other details, are given without responsibility and any intending purchasers should not rely on them as statements or representation of fact, but must satisfy themselves by inspection or otherwise as to the correctness of each of them; no person in the employment of Robert Cooney has any authority to make or give any representation or warranty whatever in relation to this property; we have not carried out a detailed survey nor tested the services, appliances and specific fittings.

**robert
cooney**

