



12 Scaffell Close Taunton TA1 4LF

£350,000

robert
cooney



In this popular location within 1.8 miles of the centre of town and within Castle School catchment is this immaculately presented 3 bedroomed semi-detached house with gardens to front and rear, garage and driveway parking for 2 cars.





Features

- Entrance Hall
- Living Room
- Kitchen / Dining Room with Rangemaster Toledo cooker, central island with Belfast sink and French doors to garden
- Utility Room
- Cloakroom
- Study with door to garage and garden
- Cloakroom
- Master Bedroom with fitted wardrobes
- 2 further Bedrooms, Bedroom 2 with fitted wardrobes
- Family Bathroom
- Enclosed South East facing garden to rear
- Garage and driveway parking
- Gas central heating
- Double glazing
- Council tax band D
- What3words:///with.cheer.flame



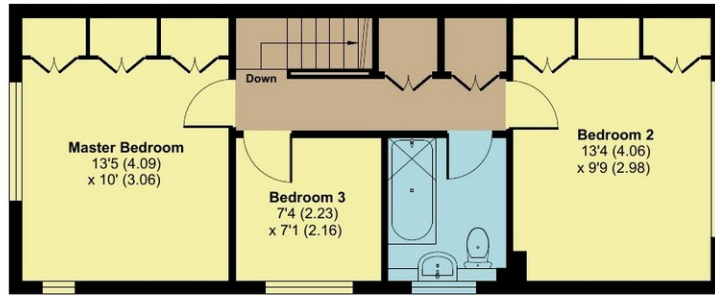
12 Scaffell Close, Taunton, TA1 4LF

Approximate Area = 1131 sq ft / 105 sq m

Garage = 216 sq ft / 20 sq m

Total = 1347 sq ft / 125 sq m

For identification only - Not to scale



FIRST FLOOR



GROUND FLOOR



Energy Efficiency Rating	
Energy Efficiency Rating	Environmental Impact
A	A
B	B
C	C
D	D
E	E
F	F
G	G



Floor plan produced in accordance with RICS Property Measurement Standards incorporating International Property Measurement Standards (IPMS2 Residential). © ntkhecom 2024.
Produced for Robert Cooney. REF: 1178047



Viewing strictly through the selling agents:

Robert Cooney

Corporation Street, Taunton, Somerset
TA1 4AW

Telephone 01823 230 230

E-mail taunton@robertcooney.co.uk

Website www.robertcooney.co.uk



For clarification, we wish to inform prospective purchasers that: these particulars are set out as a general outline only for the guidance of intended purchasers, and do not constitute, nor constitute part of, an offer or contract; all descriptions, dimensions, references to condition and necessary permission for use and occupation, and other details, are given without responsibility and any intending purchasers should not rely on them as statements or representation of fact, but must satisfy themselves by inspection or otherwise as to the correctness of each of them; no person in the employment of Robert Cooney has any authority to make or give any representation or warranty whatever in relation to this property; we have not carried out a detailed survey nor tested the services, appliances and specific fittings.

**robert
cooney**