



The Roundhouse Chilliswood Farm, Trull, Taunton TA3 7NT



Located in this rural yet very accessible location within 1.1 miles of the village of Trull is this immaculately presented 3 double bedroomed Grade II* Listed Medieval barn conversion with separate walled garden with views towards the Quantock and Brendon Hills, double garage and driveway parking.





Features

- Entrance Hall
- Living Room with vaulted ceiling, original beams, Inglenook fireplace, woodburner and door to garden
- Fitted Kitchen / Dining Room with roof light, integrated appliances, central island, granite worktops and Range style cooker
- Utility Room
- Cloakroom
- Master Bedroom with fitted wardrobe and Ensuite Shower Room
- 2 further double Bedrooms with Velux windows
- Family Bathroom with separate Shower
- Separate walled garden with views of surrounding countryside
- Double Garage with driveway parking
- Oil fired central heating
- Underfloor heating on ground floor
- Double glazing
- Castle School catchment
- Council tax band F
- What3words:
[///shifts.copycat.year](http://shifts.copycat.year)







The Roundhouse is situated near the village of Trull, within 2.7 miles of the centre of Taunton, the County Town of Somerset.

The village of Trull provides excellent amenities including parish church, thriving shop, popular local pub, post office, garage, tennis club, primary school and a regular shuttle bus service to Taunton town centre.

Taunton is a bustling, forward-looking town with excellent amenities, a good selection of independent and high street shops, distinctive restaurants, cafés, a wealth of history and sporting facilities including the County Cricket Ground.

Taunton benefits from a main line railway station linking to London Paddington in less than 2 hours and excellent communications for the M5 motorway at junction 25, situated on the eastern side of the town.



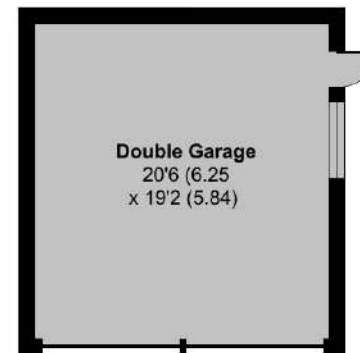
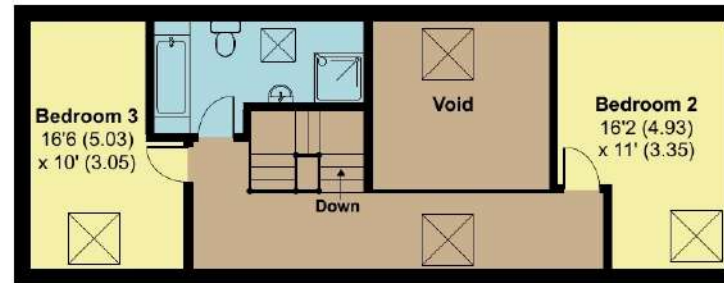
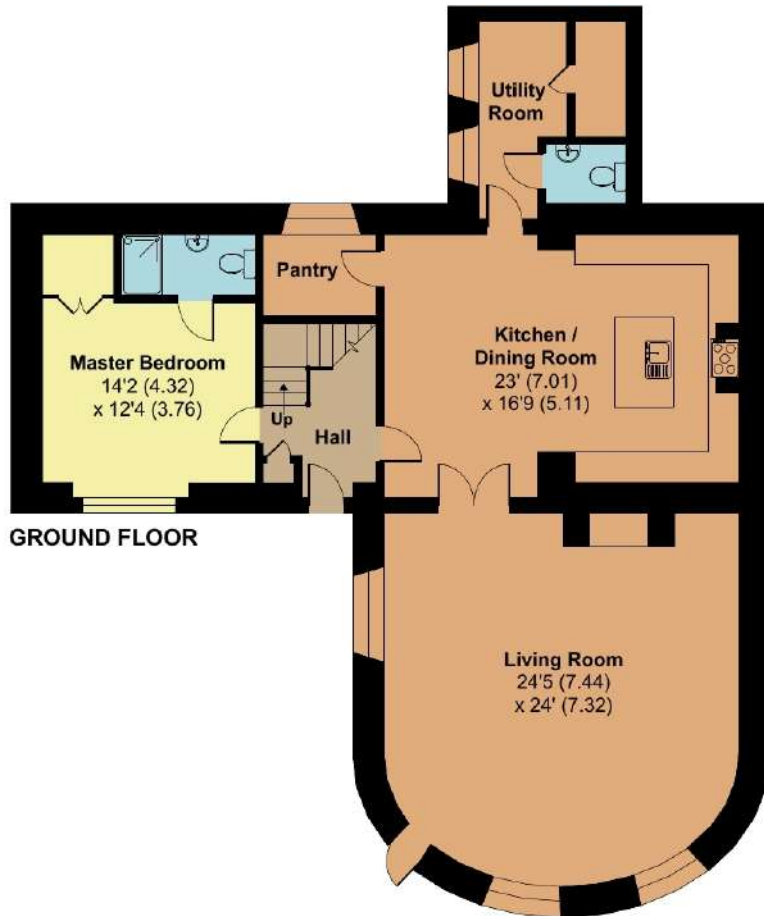
The Roundhouse, Chilliswood Farm, Trull, Taunton, TA3 7NT

Approximate Area = 2036 sq ft / 189.1 sq m (excludes void)

Garage = 392 sq ft / 36.4 sq m

Total = 2428 sq ft / 225.5 sq m

For identification only - Not to scale



Viewing strictly through the selling agents:

Robert Cooney

Corporation Street, Taunton,
Somerset TA1 4AW

Telephone 01823 230 230

E-mail taunton@robertcooney.co.uk

Website robertcooney.co.uk



Floor plan produced in accordance with RICS Property Measurement 2nd Edition, Incorporating International Property Measurement Standards (IPMS2 Residential). © nichcom 2025. Produced for Robert Cooney. REF: 1242990

For clarification, we wish to inform prospective purchasers that: these particulars are set out as a general outline only for the guidance of intended purchasers, and do not constitute, nor constitute part of, an offer or contract; all descriptions, dimensions, references to condition and necessary permission for use and occupation, and other details, are given without responsibility and any intending purchasers should not rely on them as statements or representation of fact, but must satisfy themselves by inspection or otherwise as to the correctness of each of them; no person in the employment of Robert Cooney has any authority to make or give any representation or warranty whatever in relation to this property; we have not carried out a detailed survey nor tested the services, appliances and specific fittings.

**robert
cooney**

