



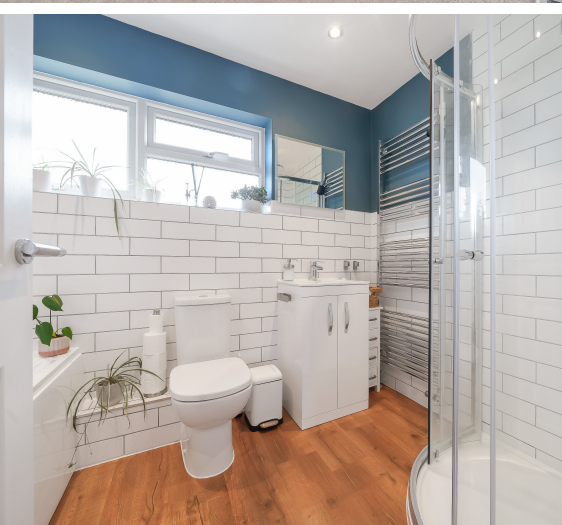
5 Sycamore Close Taunton TA1 2QJ

OIEO £250,000

robert
cooney

Situated in this popular location just 1.2 miles from the centre of town is this well presented 3 bedroomed end-terraced house with garden to front and enclosed South-East facing garden to rear with rear access and useful storage sheds.





Features

- Entrance Hall
- Living Room
- Fitted Kitchen / Dining Room with door to garden
- Master Bedroom
- 2 further Bedrooms
- Family Bathroom with separate shower
- Garden to front and enclosed South-East facing garden to rear with rear access
- Useful storage sheds
- Gas central heating
- Double glazing
- Council tax band B
- What3words:
///mascot.frown.stickler





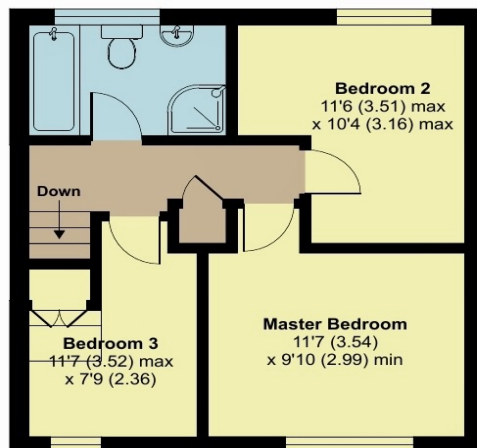
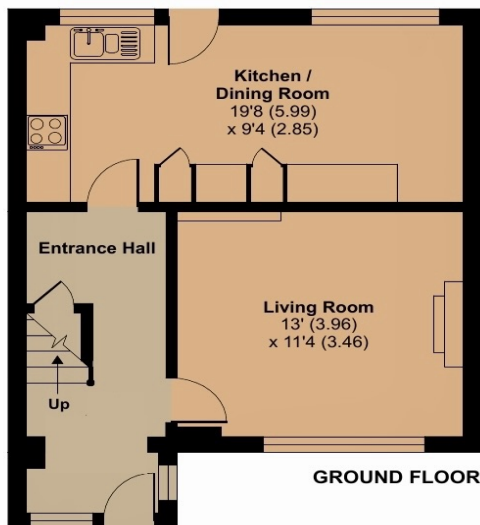
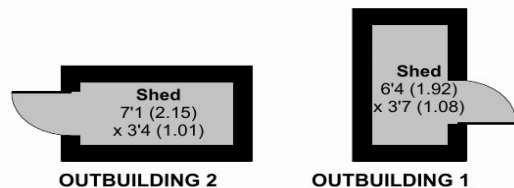
5 Sycamore Close, Taunton, TA1 2QJ

Approximate Area = 884 sq ft / 8.1 sq m

Outbuildings = 45 sq ft / 4.2 sq m

Total = 929 sq ft / 86.3 sq m

For identification only - Not to scale



Viewing strictly through the selling agents:

Robert Cooney

Corporation Street, Taunton,
Somerset TA1 4AW

Telephone 01823 230 230

E-mail taunton@robertcooney.co.uk

Website www.robertcooney.co.uk

Floor plan produced in accordance with RICS Property Measurement 2nd Edition, Incorporating International Property Measurement Standards (IPMS2 Residential). © nichecom 2024. Produced for Robert Cooney. REF: 1216975



For clarification, we wish to inform prospective purchasers that: these particulars are set out as a general outline only for the guidance of intended purchasers, and do not constitute, nor constitute part of, an offer or contract; all descriptions, dimensions, references to condition and necessary permission for use and occupation, and other details, are given without responsibility and any intending purchasers should not rely on them as statements or representation of fact, but must satisfy themselves by inspection or otherwise as to the correctness of each of them; no person in the employment of Robert Cooney has any authority to make or give any representation or warranty whatever in relation to this property; we have not carried out a detailed survey nor tested the services, appliances and specific fittings.

**robert
cooney**