



25 Manor Orchard Taunton TA1 4PR

Offers In Excess Of £250,000







In the ever popular Parkfield area within easy reach of Musgrove Park Hospital, Castle School and under a mile to the town centre is this well presented 2 double bedroomed detached bungalow with enclosed garden to rear, garage and driveway parking for 2 cars. No onward chain.







## Features

- Entrance Hall
- Living Room
- Kitchen with door to garden
- Master Bedroom with fitted wardrobe
- Further double bedroom
- Family Bathroom with separate shower with level access and wet room floor
- Enclosed garden to rear with garden shed
- Garage with electric door and driveway parking for 1 car
- Separate driveway to rear with parking for 1 car
- Gas central heating
- Double glazing
- Council tax band D
- What3words:  
///toast.many.this





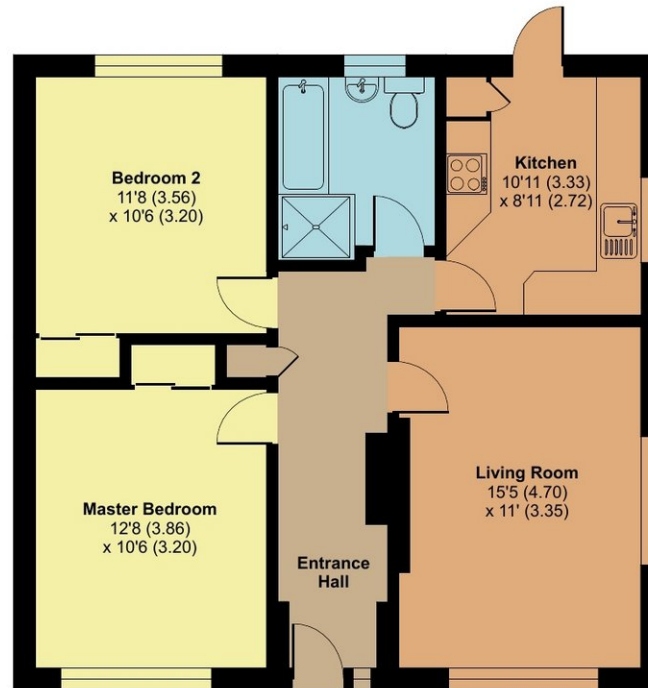
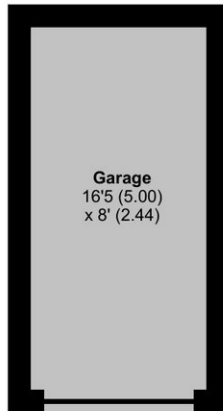
## 25 Manor Orchard, Taunton, TA1

Approximate Area = 738 sq ft / 68.6 sq m

Garage = 132 sq ft / 12.3 sq m

Total = 870 sq ft / 80.8 sq m

For identification only - Not to scale



GROUND FLOOR



Floor plan produced in accordance with RICS Property Measurement Standards incorporating International Property Measurement Standards (IPMS2 Residential). © ntkhecom 2024.  
Produced for Robert Cooney. REF: 1193060



Viewing strictly through the selling agents:

**Robert Cooney**

Corporation Street, Taunton,  
Somerset TA1 4AW

Telephone 01823 230 230

E-mail [taunton@robertcooney.co.uk](mailto:taunton@robertcooney.co.uk)

Website [www.robertcooney.co.uk](http://www.robertcooney.co.uk)



**For clarification, we wish to inform prospective purchasers that:** these particulars are set out as a general outline only for the guidance of intended purchasers, and do not constitute, nor constitute part of, an offer or contract; all descriptions, dimensions, references to condition and necessary permission for use and occupation, and other details, are given without responsibility and any intending purchasers should not rely on them as statements or representation of fact, but must satisfy themselves by inspection or otherwise as to the correctness of each of them; no person in the employment of Robert Cooney has any authority to make or give any representation or warranty whatever in relation to this property; we have not carried out a detailed survey nor tested the services, appliances and specific fittings.

**robert  
cooney**