



Springfield Stoke St. Mary, Taunton TA3 5BZ



Situated in this most desirable village location within 3 miles of the centre of Taunton is this immaculately presented 4 bedroomed detached house with good sized South West facing garden to rear, covered entertainment area and ample driveway parking.





## Features

- Entrance Hall
- Fitted Kitchen with integrated appliances and door to garden
- Utility Room with door to garden
- Dining Room with door to garden
- Living Room with woodburner
- Bedroom 3 with Ensuite Shower Room
- Bedroom 4
- Downstairs Family Bathroom
- Master Bedroom Suite with Velux windows, Ensuite Bathroom with separate double shower, his and hers basins and Velux window, Walk-in Wardrobe
- Bedroom 2 with fitted wardrobe and eaves storage
  
- Garage / Gym
- Covered Entertainment Area with woodburner
- Oil fired central heating
- Solar panels for heating
- Underfloor heating throughout ground floor
- Double glazing
  
- Council tax band E
  
- What3words:  
[///robes.topples.forgotten](https://www.what3words.com/robes-topples-forgotten)







Springfield is situated in the sought after village of Stoke St Mary, an attractive and thriving village just under 3 miles from the centre of Taunton. The village benefits from local amenities including a public house, village hall and Church. Springfield also falls within the catchment area of the highly favoured Thurlbear Primary School.

Taunton, the County Town of Somerset, is a bustling, forward-looking town with excellent amenities, a good selection of independent and high street shops, distinctive restaurants, cafés, a wealth of history and sporting facilities including the County Cricket Ground.

Taunton benefits from a main line railway station linking to London Paddington in less than 2 hours and excellent communications for the M5 motorway at junction 25, situated on the eastern side of the town.

Taunton also offers a good selection of both state and independent schools including Castle School, Taunton School, King's and Queen's Colleges and Richard Huish Sixth Form College.



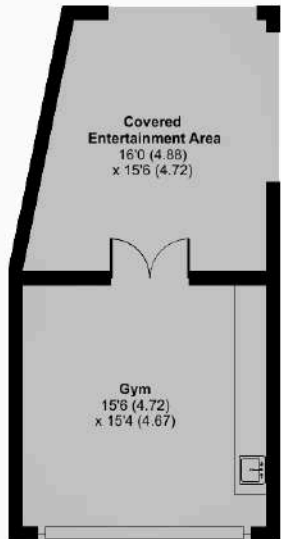
# Springfield, Stoke St. Mary, Taunton, TA3 5BZ

Approximate Area = 2441 sq ft / 226.7 sq m

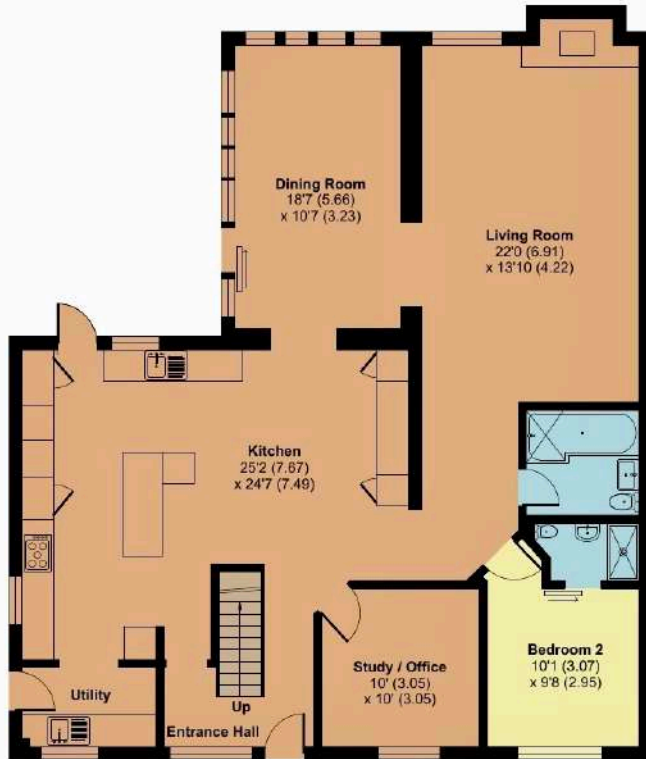
Outbuilding = 238 sq ft / 22.1 sq m

Total = 2679 sq ft / 248.8 sq m

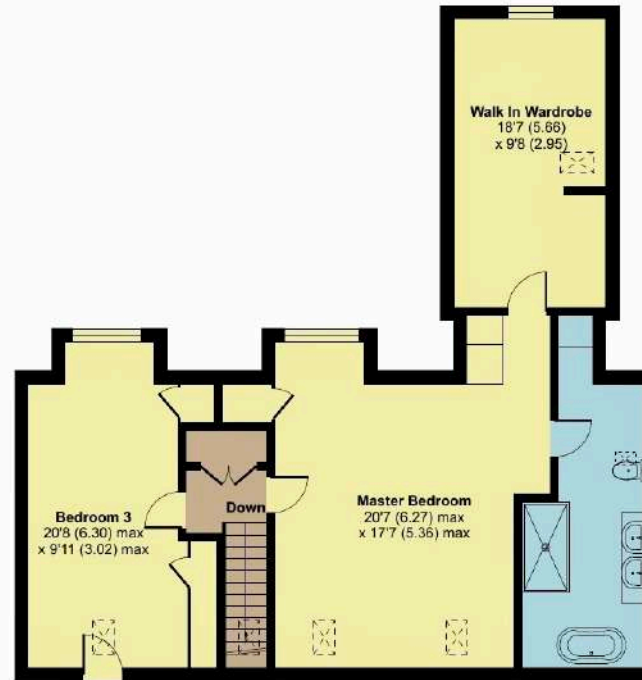
For identification only - Not to scale



OUTBUILDING



GROUND FLOOR



FIRST FLOOR



Viewing strictly through the selling agents:

**Robert Cooney**

Corporation Street, Taunton,  
Somerset TA1 4AW

Telephone 01823 230 230

E-mail [taunton@robertcooney.co.uk](mailto:taunton@robertcooney.co.uk)

Website [robertcooney.co.uk](http://robertcooney.co.uk)



Floor plan produced in accordance with RICS Property Measurement Standards incorporating International Property Measurement Standards (IPMS2 Residential). © nchecon 2024. Produced for Robert Cooney. REF: 1109374



For clarification, we wish to inform prospective purchasers that: these particulars are set out as a general outline only for the guidance of intended purchasers, and do not constitute, nor constitute part of, an offer or contract; all descriptions, dimensions, references to condition and necessary permission for use and occupation, and other details, are given without responsibility and any intending purchasers should not rely on them as statements or representation of fact, but must satisfy themselves by inspection or otherwise as to the correctness of each of them; no person in the employment of Robert Cooney has any authority to make or give any representation or warranty whatever in relation to this property; we have not carried out a detailed survey nor tested the services, appliances and specific fittings.

**robert  
cooney**

