



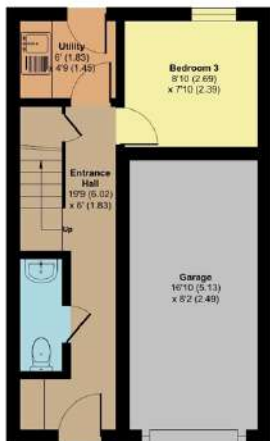
14 Wesley Close Taunton TA1 4YA

£235,000



14 Wesley Close, Taunton, TA1 4YA

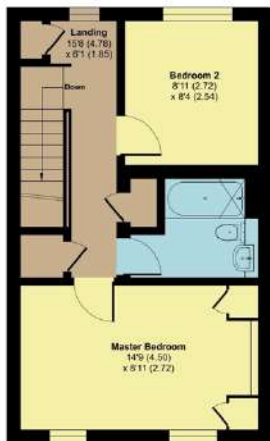
Approximate Area = 978 sq ft / 90.8 sq m
 Garage = 135 sq ft / 12.5 sq m
 Total = 1113 sq ft / 103.4 sq m
 For identification only - Not to scale



GROUND FLOOR



FIRST FLOOR



SECOND FLOOR

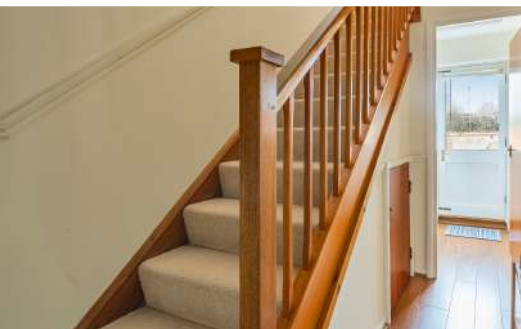


RICS Certified Property Measurement
 Floor plan produced in accordance with RICS Property Measurement Standards incorporating International Property Measurement Standards (IPMS) Residential. ©RobCooney/2024. Produced for Robert Cooney. REF: 1101306

Features

- Entrance Hall
- Bedroom 3
- Utility Room with door to garden
- Cloakroom
- Living Room on 1st floor
- Fitted Kitchen
- Master Bedroom on 2nd floor with fitted wardrobes
- Further Bedroom
- Family Bathroom
- Enclosed low maintenance garden to rear
- Garage and driveway parking
- Gas central heating
- Castle School catchment
- Council tax band C

Within Castle School catchment area just 1.5 miles of the town centre is this spacious 3 bedroomed mid-terraced property arranged over three storeys with low maintenance garden to rear, garage and driveway parking.



Viewing strictly through the selling agents:

Robert Cooney

Corporation Street, Taunton, Somerset TA1 4AW

Telephone 01823 230 230

E-mail taunton@robertcooney.co.uk

Website: robertcooney.co.uk



For clarification, we wish to inform prospective purchasers that: these particulars are set out as a general outline only for the guidance of intended purchasers, and do not constitute, nor constitute part of, an offer or contract; all descriptions, dimensions, references to condition and necessary permission for use and occupation, and other details, are given without responsibility and any intending purchasers should not rely on them as statements or representation of fact, but must satisfy themselves by inspection or otherwise as to the correctness of each of them; no person in the employment of Robert Cooney has any authority to make or give any representation or warranty whatever in relation to this property; we have not carried out a detailed survey nor tested the services, appliances and specific fittings.