



JOHN BROWN  **MARK YOULL**

SALES & LETTINGS

Coulsdon Road, Coulsdon, CR5 1EB

£750,000

🛏️ 4 🚿 2 🚗 2



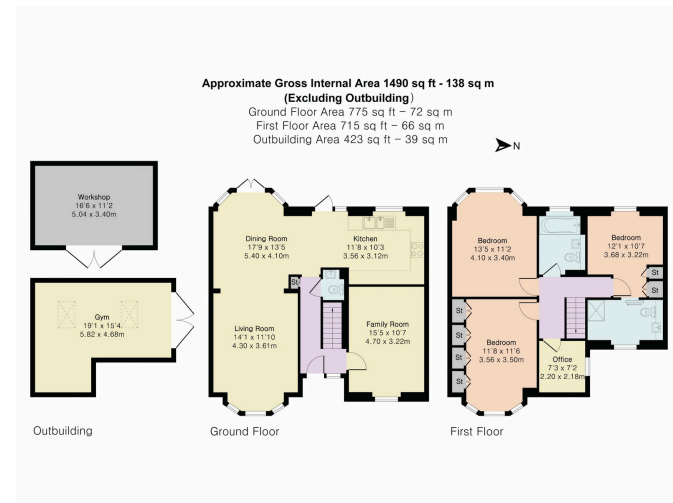
- FOUR BEDROOMS
- TWO BATHROOMS
- OPEN PLAN KITCHEN/
LIVING AREA
- DRIVEWAY WITH PARKING
FOR MULTIPLE VEHICLES
- GAS CENTRAL HEATING
- DOUBLE GLAZING
- FLAT GARDEN
- CLOSE TO TRANSPORT
LINKS
- WORK SHOP
- LARGE GARDEN ROOM
CURRENTLY USED AS A GYM





This stunning 4-bedroom semi-detached home on Coulsdon Road effortlessly combines older-style character with modern living facilities, offering spacious and versatile accommodation throughout. It strikes the perfect balance between contemporary open-plan design and thoughtfully retained traditional elements, making it ideal for modern families who value both style and comfort.

EPC - D



PINK PLAN

Floor plan produced in accordance with RICS Property Measurement 2nd Edition. Although Pink Plan Ltd ensures the highest level of accuracy, measurements of doors, windows and rooms are approximate and no responsibility is taken for error, omission or misstatement. These plans are for representation purposes only and no guarantee is given on the total square footage of the property within this plan. The figure seen is for initial guidance only and should not be relied on as a basis of valuation.

JOHN BROWN & MARK YOULL
SALES & LETTINGS

YOUR LOCAL INDEPENDENT AGENT

01737 551111 / 020 8668 5344

info@johnbrownmarkyoull.co.uk

www.johnbrownmarkyoull.co.uk



105 Coulsdon Road, Old Coulsdon, Surrey CR5 1EH