



**JOHN BROWN**  **MARK YOULL**

SALES & LETTINGS



# Flat 8, Seven House, 40, Town End

Offers Over £245,000

3 1 1





## Charming Apartment with Parkland Views in Caterham on the Hill

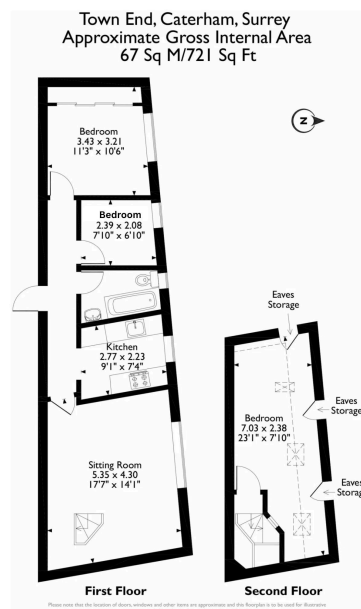
This delightful apartment offers a unique blend of modern living and natural beauty, nestled in the heart of Caterham on the Hill. Boasting stunning views over lush parkland, this apartment provides a serene atmosphere, perfect for those looking to escape the hustle and bustle of city life while staying well-connected.

The spacious lounge is bright and airy, with large windows that flood the room with natural light and offer beautiful vistas of the surrounding greenery. A striking feature of the apartment is the spiral staircase leading to a versatile bedroom above or an ideal space for a home office, creative studio, or quiet retreat, all with panoramic views of the parkland below.

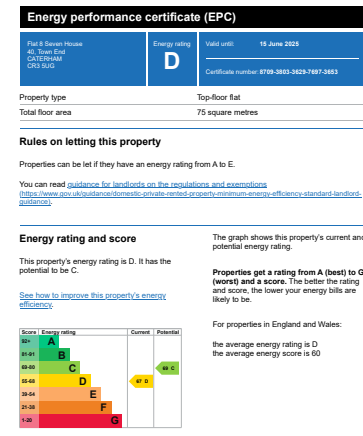
With tasteful finishes being freshly decorated throughout with new carpets and a well-thought-out layout, this apartment offers both comfort and character. The bonus room adds a touch of charm and practicality, creating a unique living experience that stands out in the area.

Ideally located with easy access to local amenities and transport links, this is an apartment that perfectly balances tranquil living with convenience.





- Two Bedroom Apartment
- Fitted Kitchen
- Bathroom
- Allocated Parking
- Amenities close by
- Spacious Lounge
- Spiral staircase to upper level
- Study
- Overlooking the Green
- No onward chain



YOUR LOCAL INDEPENDENT AGENT

01737 551111 / 020 8668 5344

info@johnbrownmarkyoull.co.uk

www.johnbrownmarkyoull.co.uk



105 Coulsdon Road, Old Coulsdon, Surrey CR5 1EH