

Frank Harris & Co.



Bloomsbury, WC1H

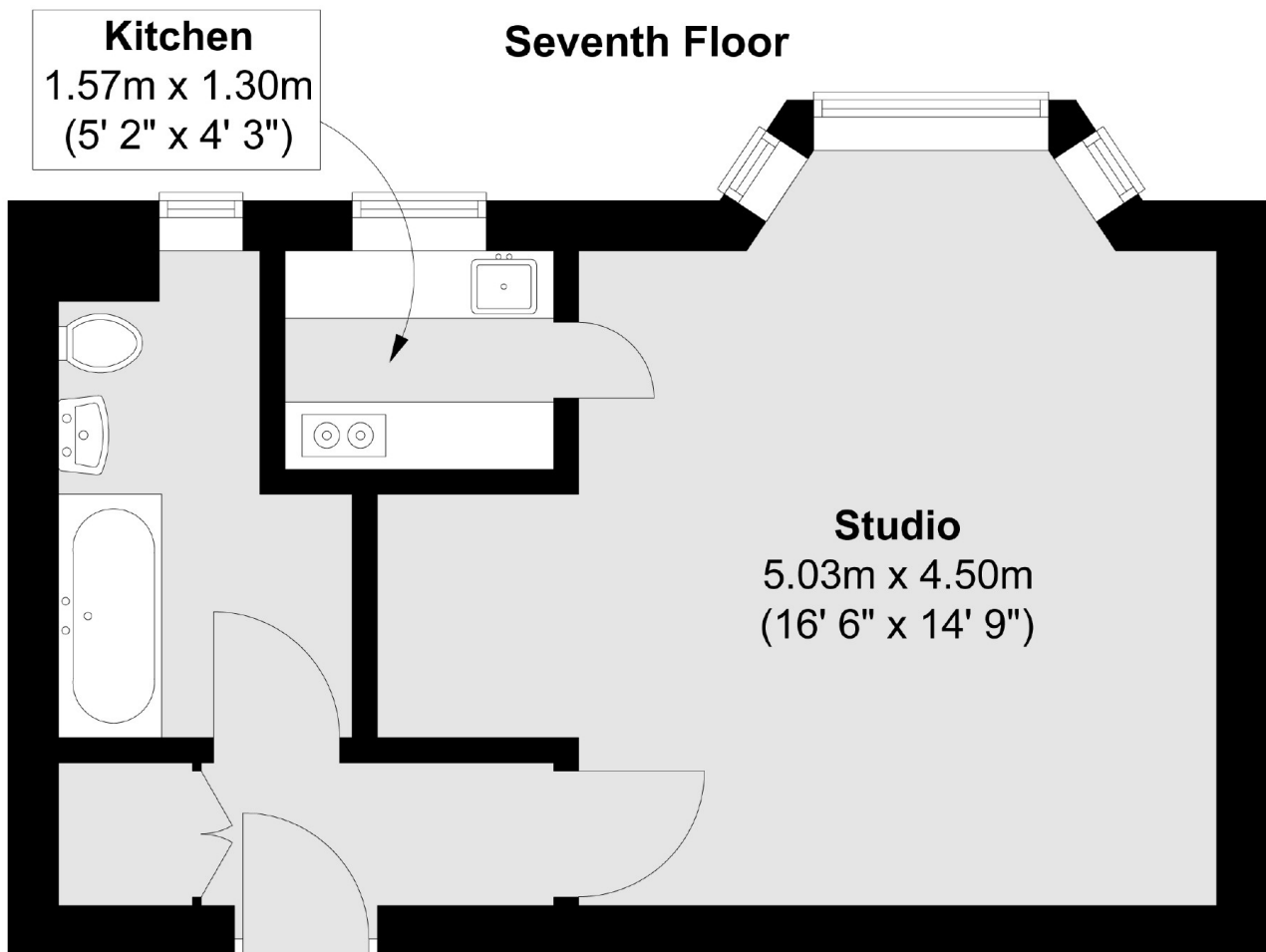
£400,000

A light and spacious studio apartment in this prestigious 24-hr portered block located near Russell Square underground station. The property is situated on the 8th floor and comprises a large studio room with small separate kitchen and a large bathroom.

Endsleigh Court in Bloomsbury is near several key landmarks including University College London (UCL), the British Library, SOAS University of London and the British Museum. The Brunswick Centre offers shops, restaurants, and a cinema. Euston Station and St Pancras International provide major transport links. The area also has many cafes, restaurants, and pubs.

- 24-Hour Concierge • Studio • 7th Floor •

Frank Harris & Co.



Total area (approx.) : 28.2 sq. m (303 sq. ft)

Frank Harris & Co. Bloomsbury and Kings Cross
81 Marchmont Street,
London, WC1N 1AL
020 7405 4444
bloomsburysales@frankharris.co.uk

Energy Rating: C. We aim to make our particulars both accurate and reliable. However they are not guaranteed; nor do they form part of an offer or contract. If you require clarification on any points then please contact us, especially if you're traveling some distance to view. Please note that appliances and heating systems have not been tested and therefore no warranties can be given as to their good working order.

