

Frank Harris & Co.



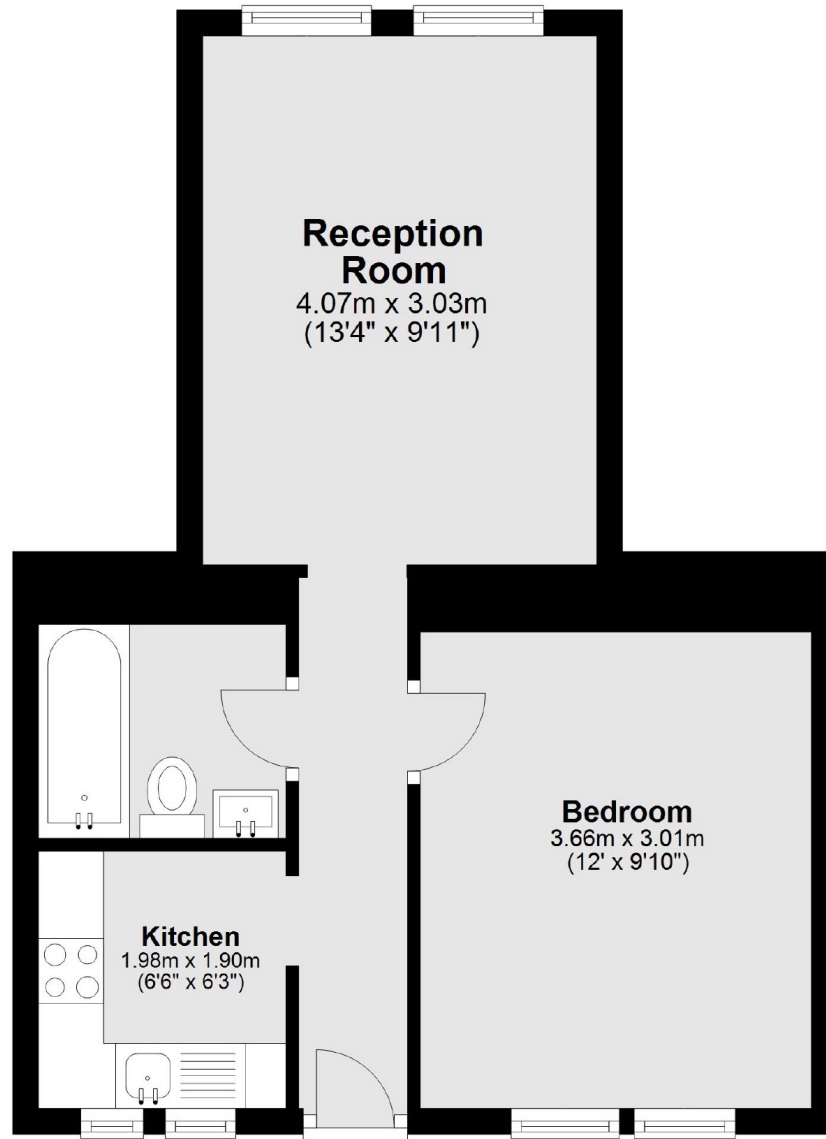
Sandwich House, WC1H

£400,000

Offers in Excess Of. Set on this quiet tree lined side street between Russell Square and Kings Cross, Sandwich House is a much sought after, popular and well located, late Edwardian mansion block of which the majority of flat owners collectively own the freehold. The property benefits from many original features, it comprises of; a one bedroom with separate kitchen and living space, a communal roof terrace and a caretaker on site.

Sandwich Street is centrally located between Judd Street and Marchmont Street. The local shopping amenities and restaurants of Bloomsbury and the West End are all close by. Euston, Kings Cross, St Pancras International and Russell Square stations service the area.

Frank Harris & Co.



Total area: approx. 36.9 sq. metres (397.2 sq. feet)

Frank Harris & Co. Bloomsbury and Kings Cross
81 Marchmont Street,
London, WC1N 1AL
020 7405 4444
bloomsburysales@frankharris.co.uk

Energy Rating: D. We aim to make our particulars both accurate and reliable. However they are not guaranteed; nor do they form part of an offer or contract. If you require clarification on any points then please contact us, especially if you're traveling some distance to view. Please note that appliances and heating systems have not been tested and therefore no warranties can be given as to their good working order.

